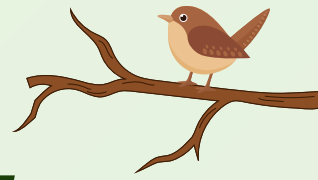


DEFINING GREENSPACE WORKSHOP



Work in land use / public access?

Join the Chesapeake Bay Program's Protected Lands and Public Access Workgroups in a discussion on **defining greenspace and public access parameters!**

**THURSDAY,
JAN 29TH**

**10:00am - 3:00pm
Hybrid Format**



Discussion:

- Definitions of greenspace
- Parameters for tracking access and recreation
- Existing programs that highlight urban and community greenspace

**Contact Public Access/Protected
Lands Staffer, Daniel Koval,
for more information!**



kovald@chesapeake.org

