

Land Use Time Series Review Process

Sarah M. McDonald

USGS, Lower Mississippi Gulf Water Science Center

Land Use Work Group

September 17, 2025

Overview

1. Goal: confirm the timeline, method of delivery, and scale of data for fatal flaw review
2. Agenda:
 1. Demo of review app
 2. Timeline review
 3. Description of initial review (e.g. data currently in the review app)
 4. Discussion on fatal flaw review

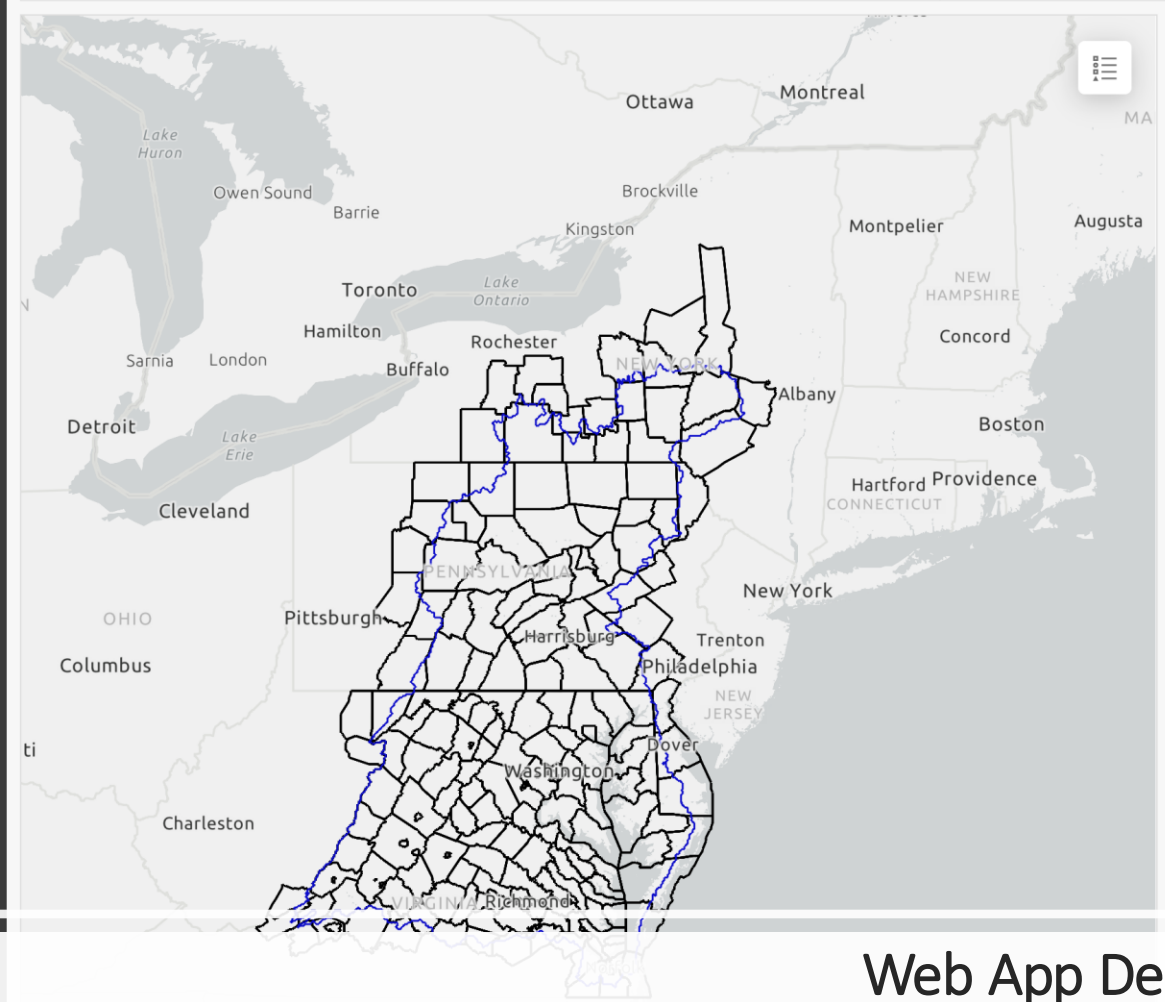
Land Use / Land Cover Trends

Select a state
All

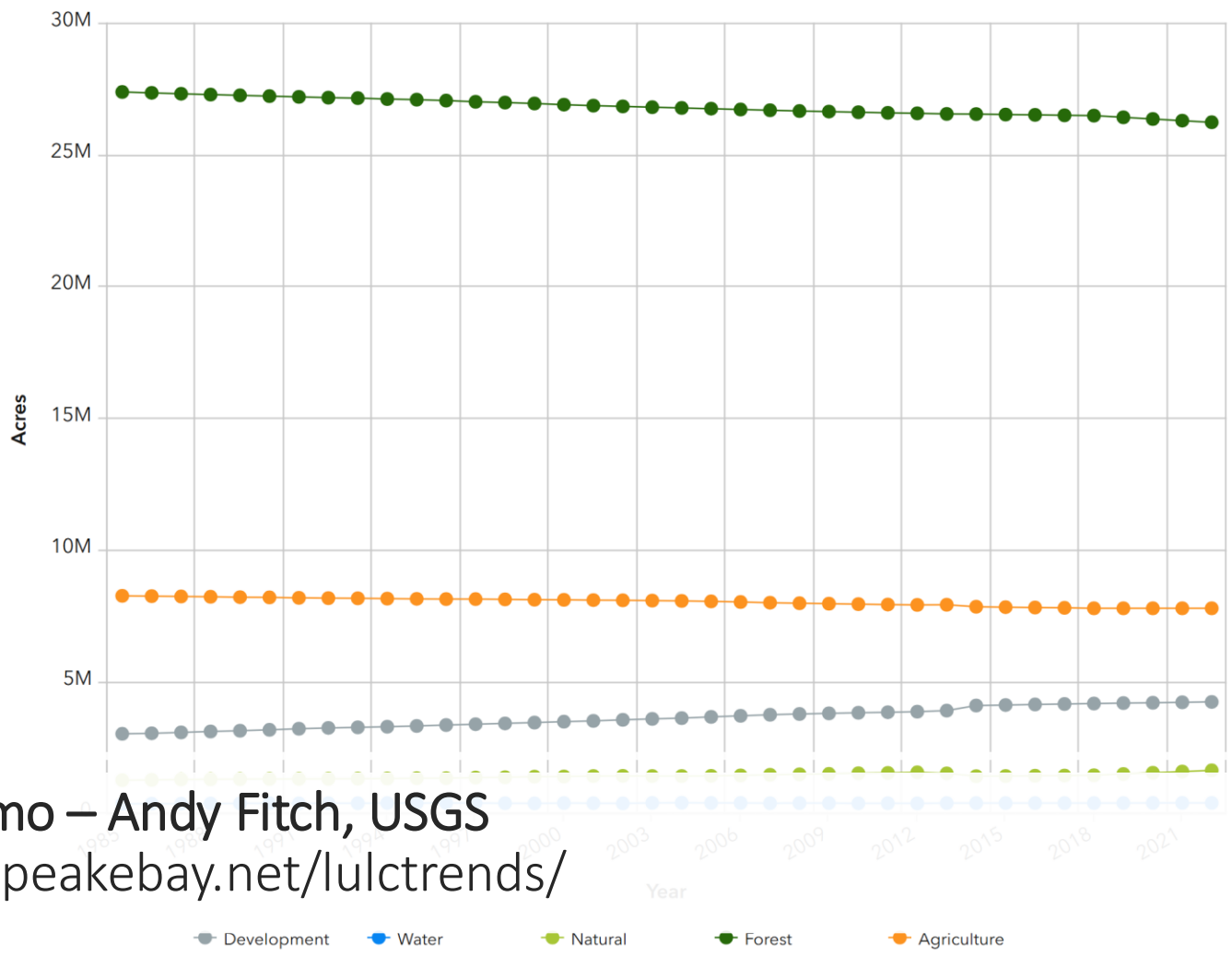
Select a county
All

Select a land use sector
All

Select a year
1985



Acres by Year and Land Use Sector*



Web App Demo – Andy Fitch, USGS
<https://gis.chesapeakebay.net/lulctrends/>

* The data currently displayed in the chart can be downloaded by clicking the ellipsis at the top right corner of the chart. The full dataset can be downloaded [here](#).

Land Use Time Series Review Timeline

2-week initial review period

2-months to incorporate feedback + produce final land use time series

8 weeks to review time series for fatal flaws before use in model calibration

5 weeks to incorporate feedback

9/16

9/30

11/30

1/2026

2/2026

Start Initial Review Period

- Web App and data download
- Presentation on draft annual sector land use time series table by county (1985-2022)
- Discussion / questions on data and trends

End Review Period

- Jurisdictions provide feedback on general sector trends at the county scale
- Jurisdictions provide feedback on the review app

Deliver land use for model testing

- Annual land use time series by summary unit 1985-2022
- Start fatal flaws review

End fatal flaws review

- Jurisdictions provide feedback on Phase 7 land use trends by modeling segment (LRSEGs?)
- Fatal flaws review

Deliver time series for model calibration

- Deliver land use time series for model calibration

Initial Review

September 16, 2025 – September 30, 2025

1. Straight-face test of high-level sector trends at the county scale
 1. Do trends detected from NLCD accurately represent county-scale trends?
2. Familiarization of the web app which will be used to review the fine-scale (LRSEGs?) 16-class Phase 7 land use trends
 1. Any functionality in the app needed to effectively review the data?
3. Familiarization with the data format (for those downloading the raw data)

Land Use Time Series Review Timeline

2-week initial review period

2-months to incorporate feedback + produce land use time series

8 weeks to review time series for fatal flaws before use in model calibration

5 weeks to incorporate feedback

9/16

9/30

11/30

1/2026

2/2026

Start Initial Review Period

- Web App and data download
- Presentation on draft annual sector land use time series table by county (1985-2022)
- Discussion / questions on data and trends

End Review Period

- Jurisdictions provide feedback on general sector trends at the county scale
- Jurisdictions provide feedback on the review app

Deliver land use for model testing

- Annual land use time series by summary unit 1985-2022
- Start fatal flaws review

End fatal flaws review

- Jurisdictions provide feedback on Phase 7 land use trends by modeling segment (LRSEGs?)
- Fatal flaws review

Deliver time series for model calibration

- Deliver land use time series for model calibration

Fatal Flaws Review

December 1, 2025 – January 23, 2026

Purpose

- Identify fatal flaws prior to data being incorporated for model calibration

Discussion Topics

- What scale of data do you want to review?
 - I propose Land River Segments (LRSEGs)
- Is the time frame reasonable?
- Other concerns?