

Michaux State Forest: Forest, Landscape, or Watershed(s)?

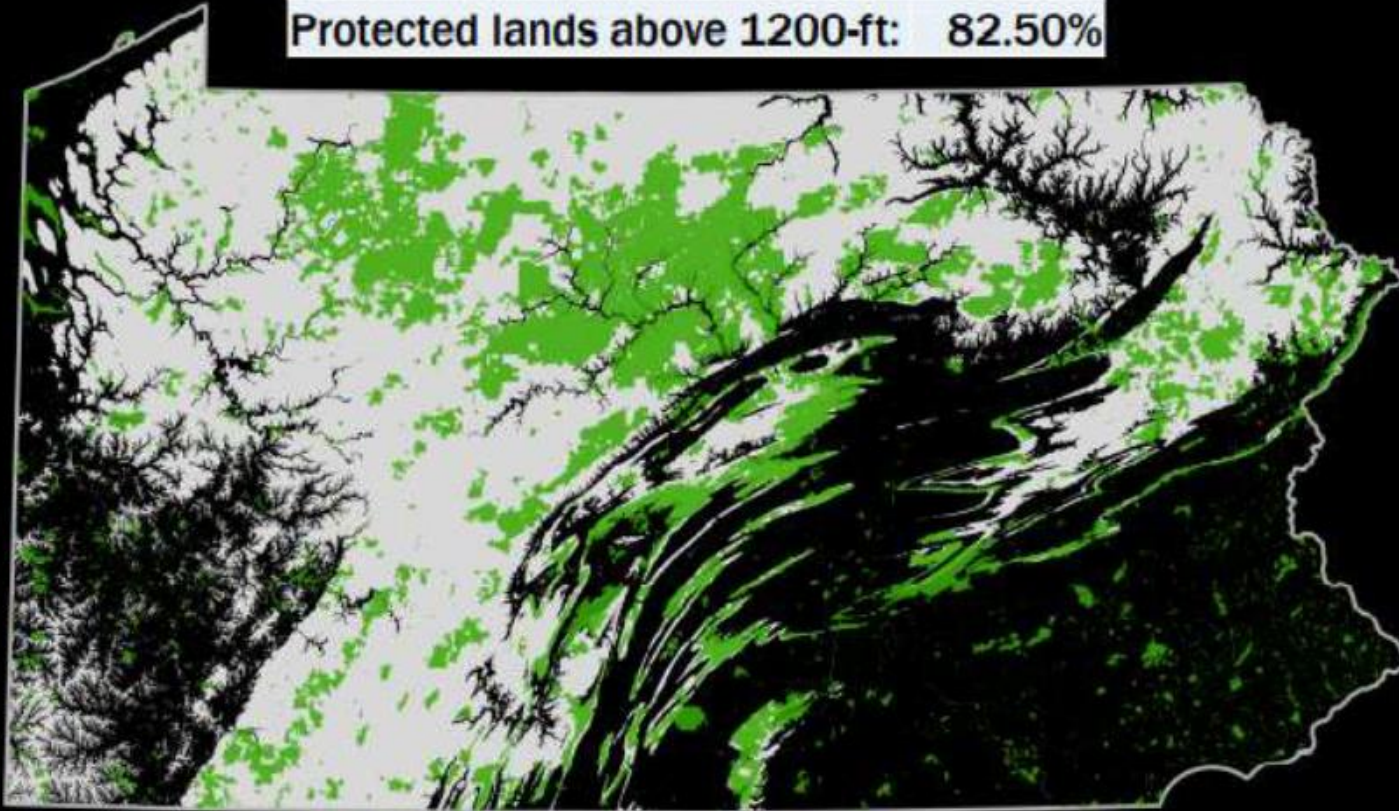




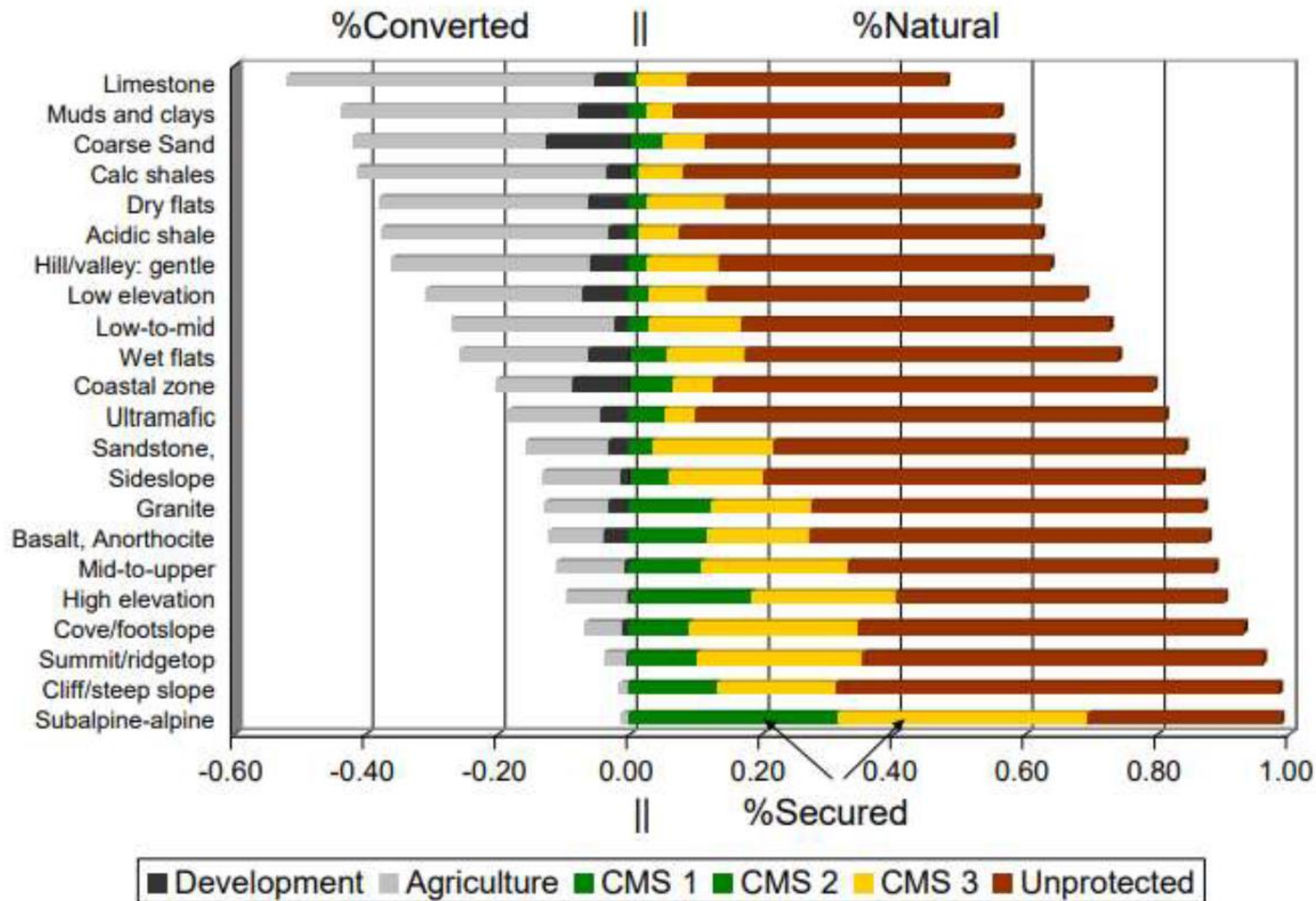


Where are Pennsylvania's protected lands and habitats?

PA below 1200-ft:	45.80%
PA above 1200-ft:	54.10%
Protected lands below 1200-ft:	17.50%
Protected lands above 1200-ft:	82.50%



To some extent: We have a deficit of protection for biodiversity



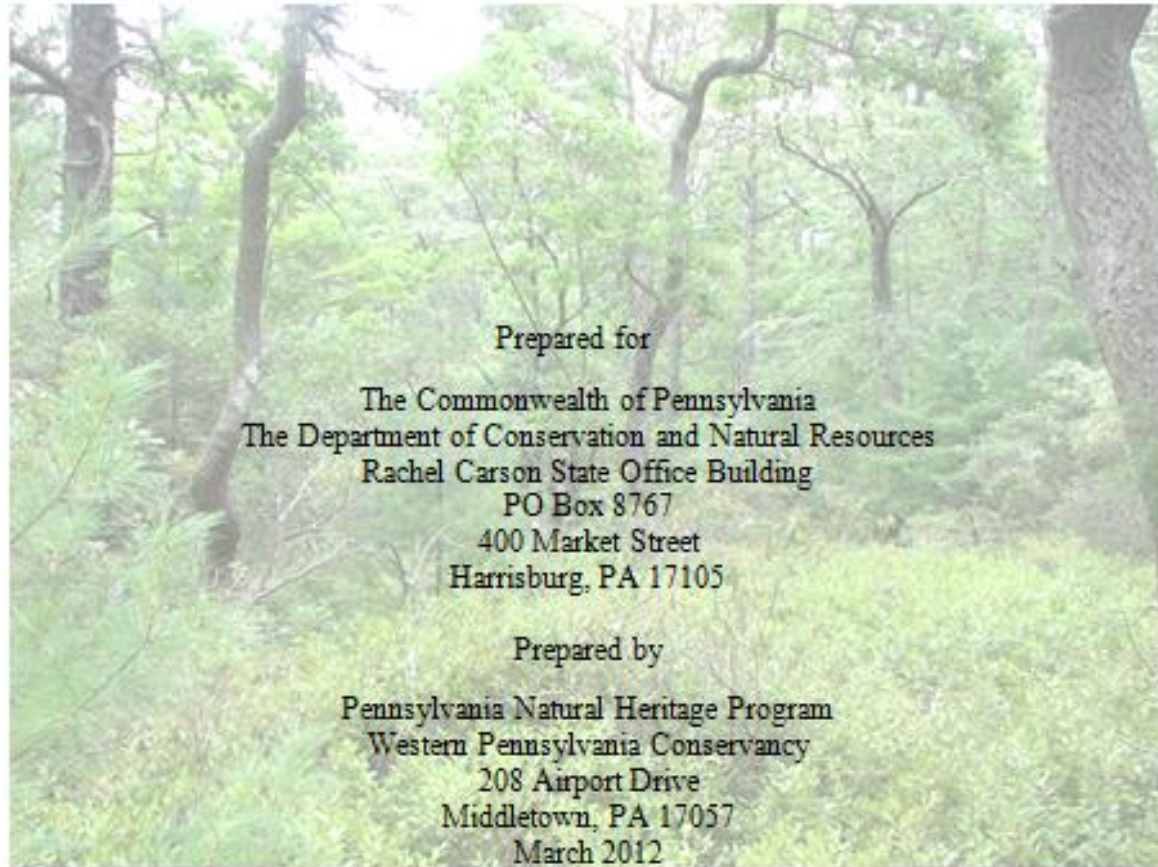
One must be moved, but one needs to be moved in the right direction, where “right” means with appropriate appreciation of what is actually going on.”

Holmes Rolston III, “Aesthetics and the Forest Experience”





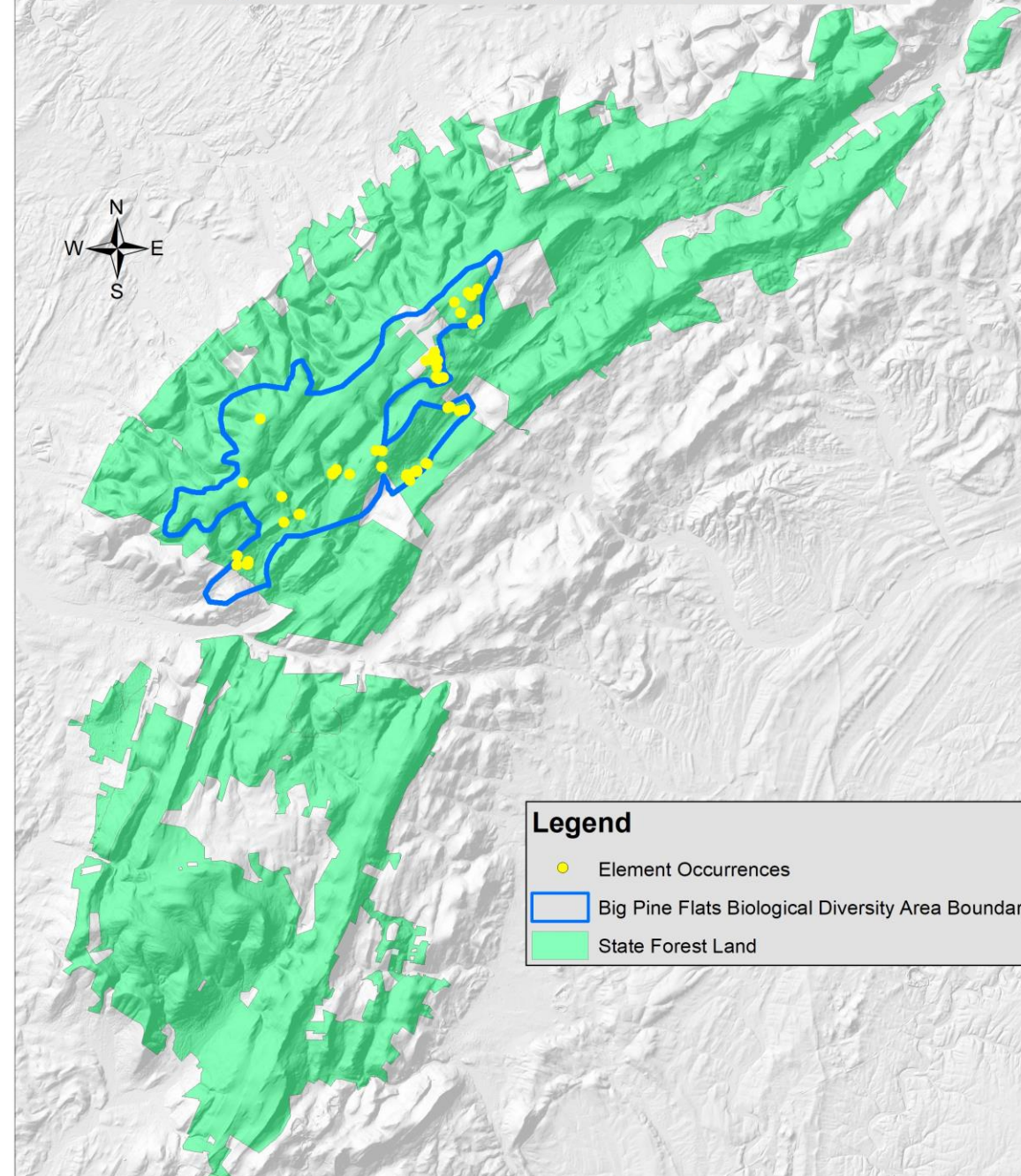
Natural Resources Inventory and Management
Recommendations for
Big Pine Flats Biological Diversity Area



South Mountain Partnership Version

August 2014

**Michaux State Forest
Big Pine Flats Biological Diversity Area**

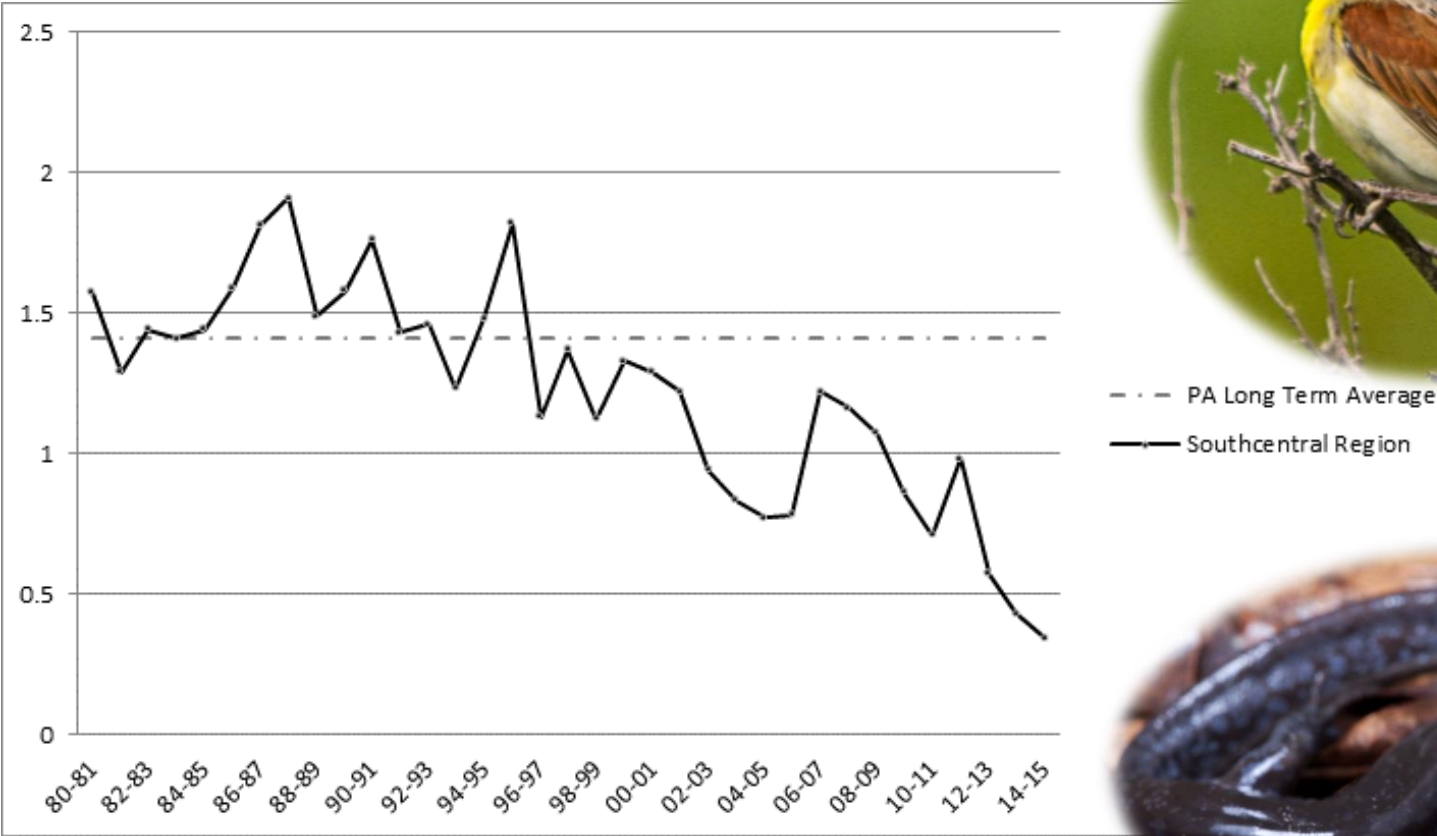




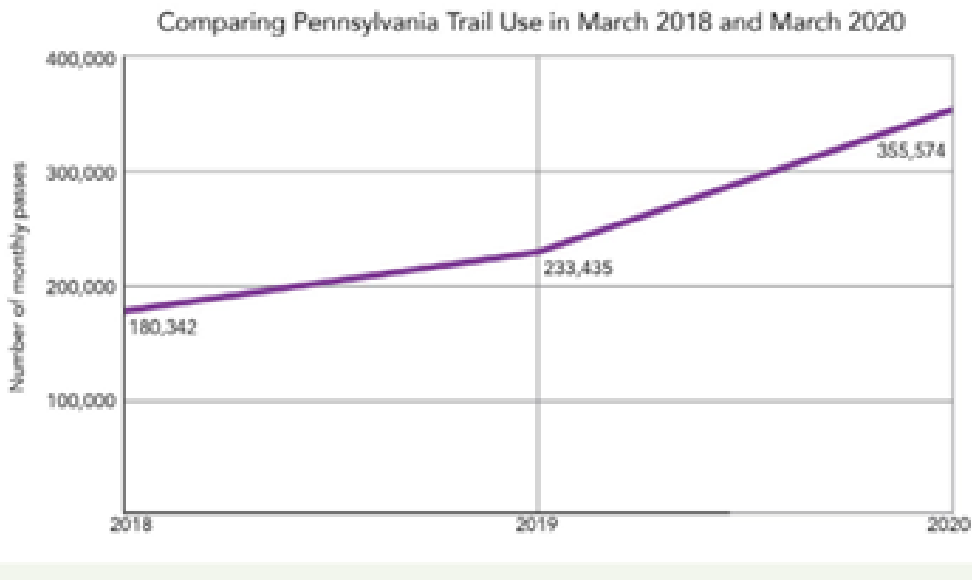


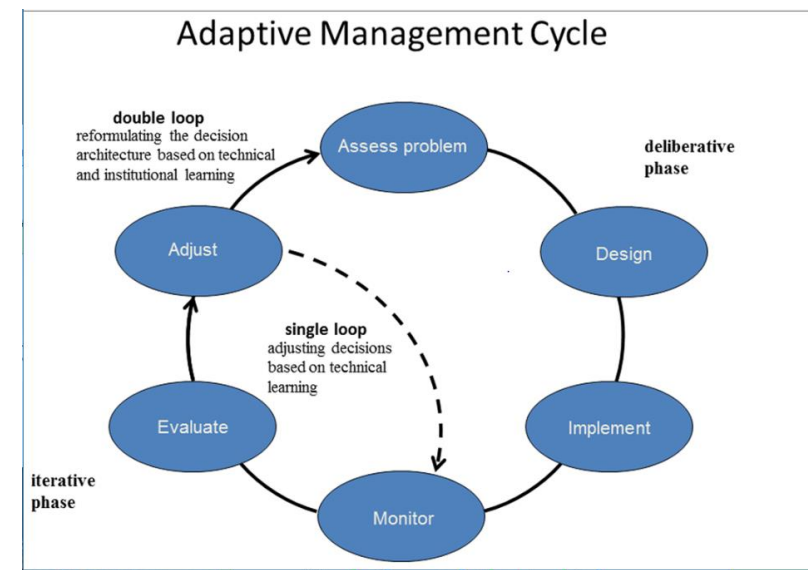
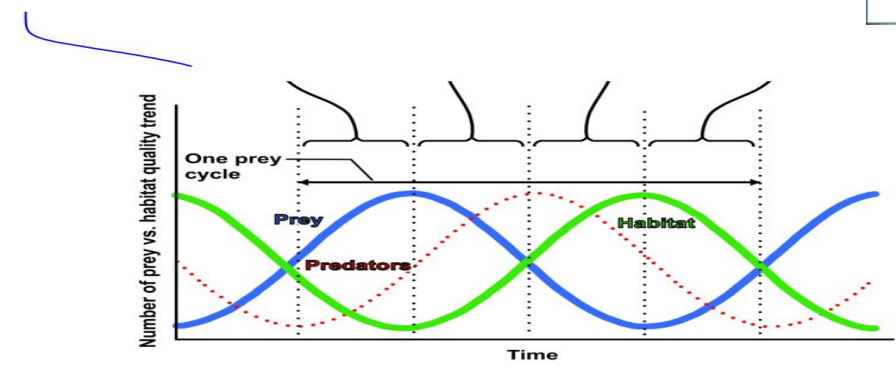
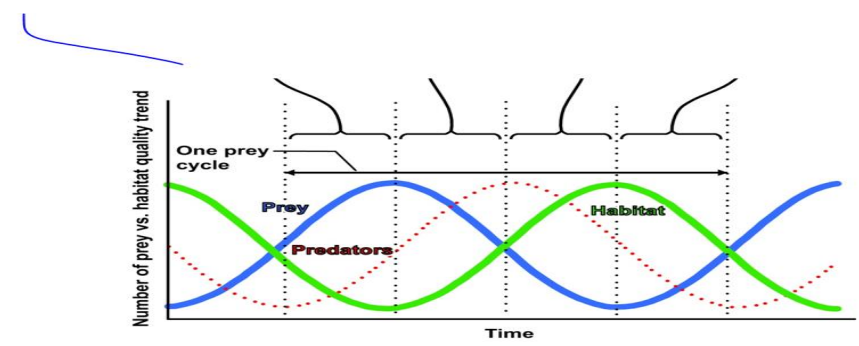
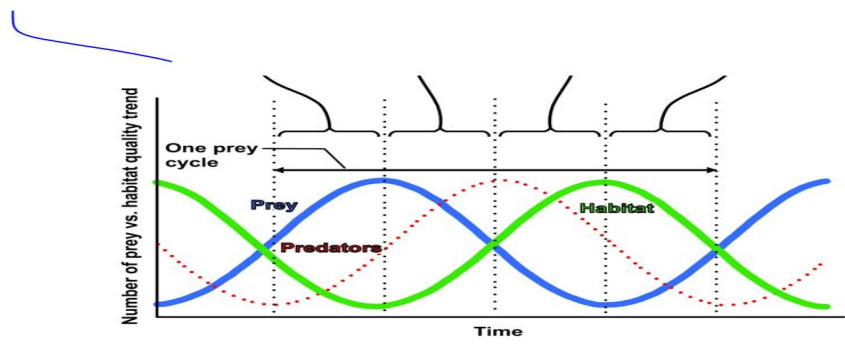


Managing for Competing Objectives



Managing for Competing Objectives





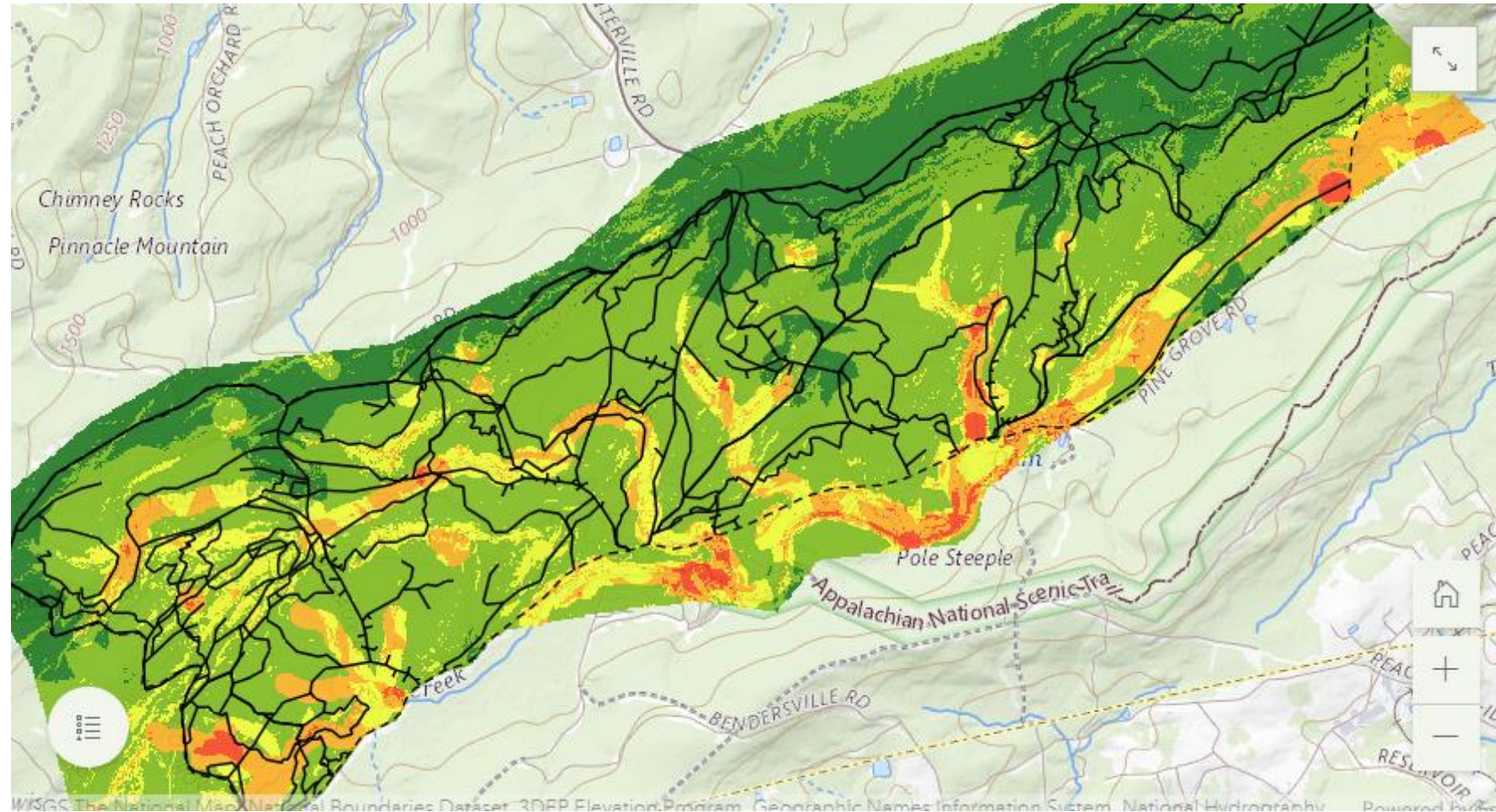
Trails: Mountain Creek Watershed

Redesigning a dynamic, user generated trail system in a sensitive watershed.

Designated CC implementation funding

Model constraints and opportunities for sustainable trail systems.

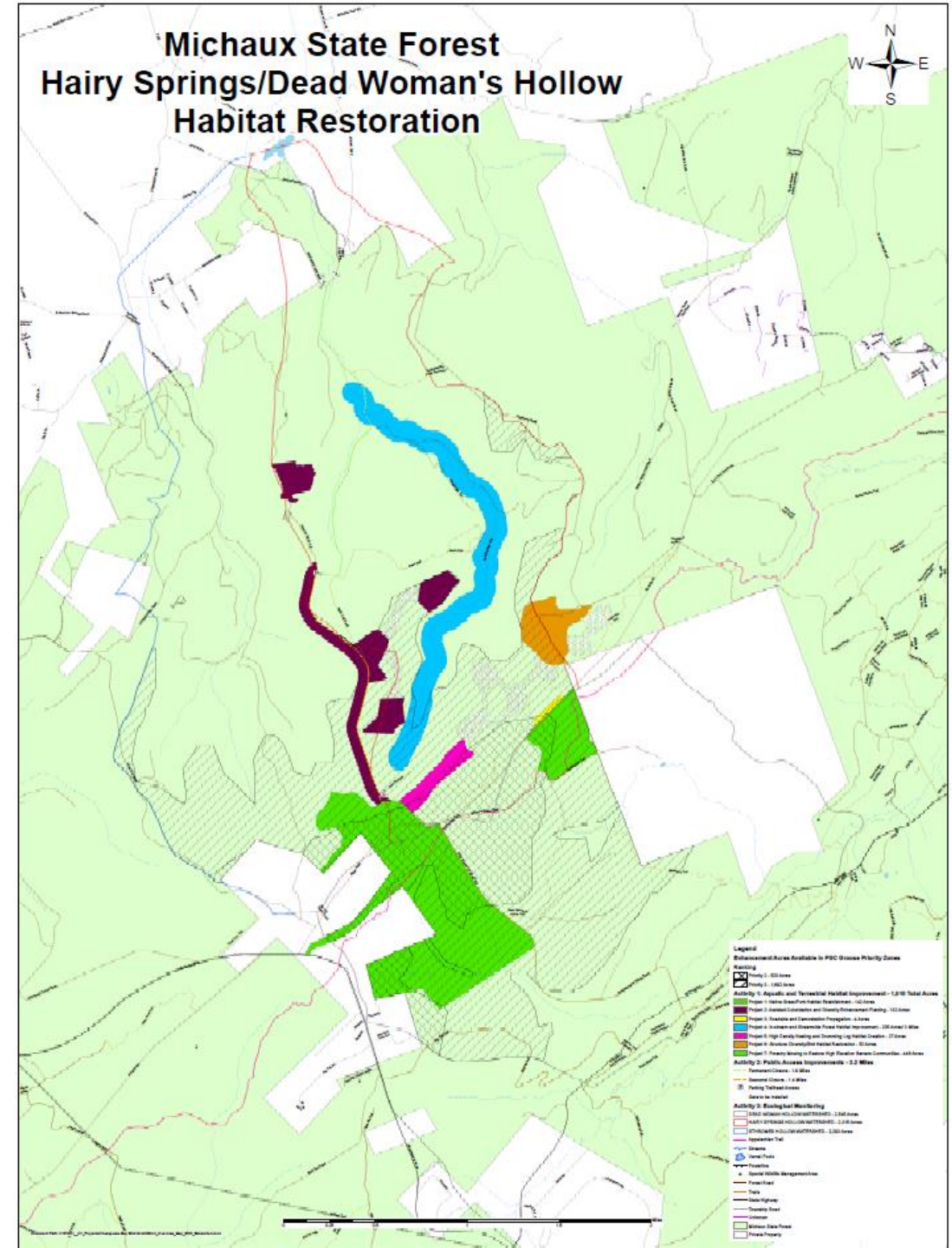
Spatially explicit on-line social input tool.



National Fish and Wildlife Chesapeake Wild Grant For Class 3 Watershed Habitat Enhancement for T&E species:

Deliverables:

- 1,000+ acres of “treatments”
- Scalable Monitoring Protocol for multi-taxa, aquatic/terrestrial and stream/carbon response in Class 1 Tribes





Is it time to start
looking
upstream?

Questions?