



Chesapeake  
Bay Trust

# Mid-Atlantic Environmental Justice Participatory Fund

An introduction

Jose Castellanos and Samara Pyfrom  
October 2, 2024



# Contents



01

## Background

Who we are and what is Participatory Grant-Making



02

## Objectives

Where do we want to go with the Mid-Atlantic Environmental Justice Participatory Fund?



03

## Partners and structure

Who are our core partners and how will the Fund work internally?



04

## Tracks and eligibility

Who will be able to apply?





## Who We Are...

Nonprofit grant-making organization (and quasi state agency) created in 1985 by the Maryland General Assembly.

Goal: to increase stewardship of our shared natural resources through grant programs, special initiatives, and partnerships that support:

- K-12 environmental education,
- on-the-ground watershed restoration,
- community engagement,
- the underlying science of these three realms.



# Background

Sources of funding

---

**\$17,500,000**

- USDA Forest Service

**\$125,000**

- From private foundations partners
  - Agua Fund
  - Greater Washington Community Foundation
  - Prince Charitable Trusts

*The Inflation  
Reduction Act*



**USDA Forest Service Urban & Community Forestry  
Inflation Reduction Act  
Notice of Funding Opportunity (NOFO)**

**SUMMARY INFORMATION**

**Federal Awarding Agency Name:** U.S. Department of Agriculture – Forest Service (FS) Urban and Community Forestry Program.

**Notice of Funding Opportunity Title:** Inflation Reduction Act – Urban and Community Forestry



**JUSTICE40**

A WHOLE-OF-GOVERNMENT INITIATIVE



ENVIRONMENTAL JUSTICE



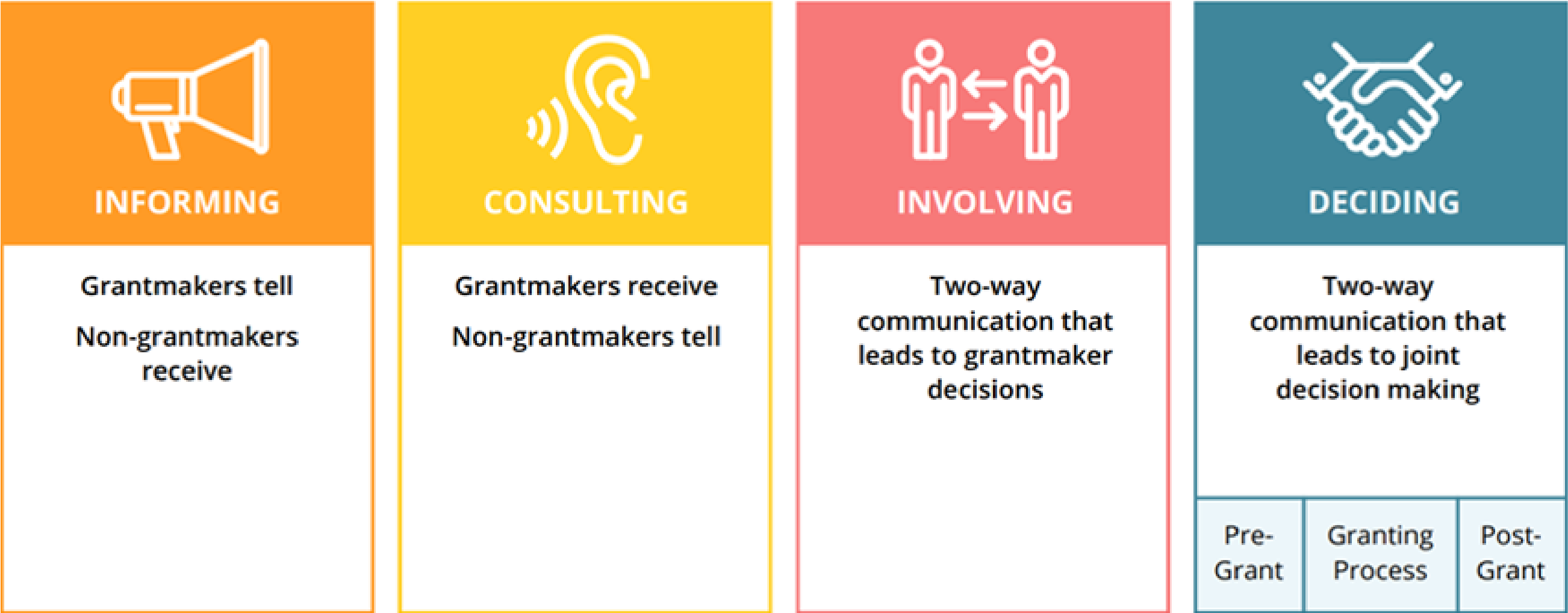


# Participatory Grant-Making



## FRAMEWORK FOR PARTICIPATORY GRANTMAKING

PGM is an approach to funding that cedes decision-making power about grants to the very communities impacted by funding decisions





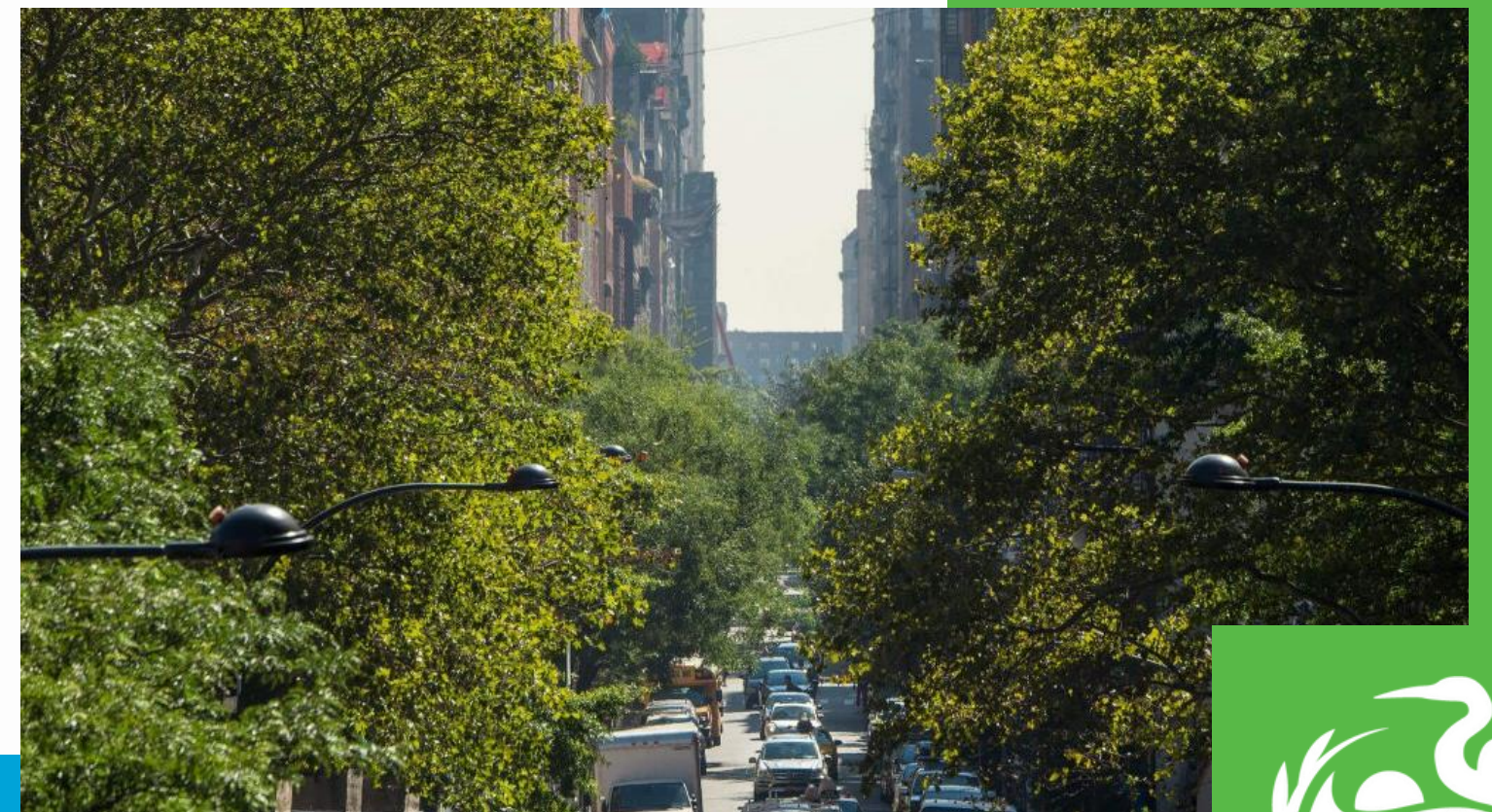
# Objectives

## Our ultimate goal is...

- To disperse and democratize the range of co-benefits that healthy community forests have for decades into the future in the Mid-Atlantic region.

## We will do that by...

- Providing competitive passthrough funding to CBOs who have historically faced constraints in competing for funding to address EJ issues, and by giving them all the technical assistance needed.

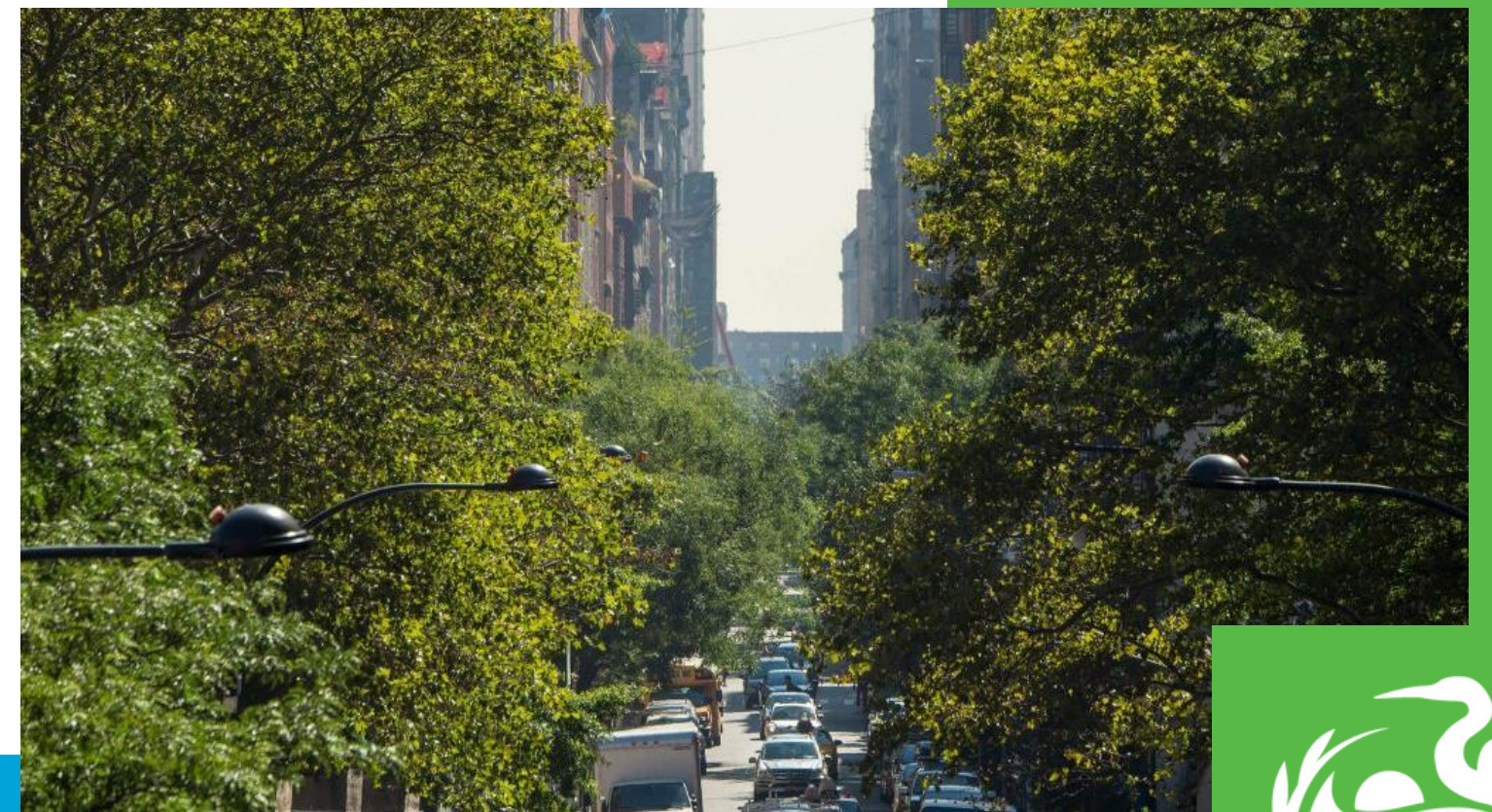




# Objectives

## Our measurable outcomes will be...

- 40 to 70 grants/year during first four years
- Increase in the knowledge and capacity of Hub partners
- Increase in knowledge and skills of grantees
- Expansion in urban canopies and co-benefits (as well as BMMPs)
- Increase in workforce and economic opportunity for forestry-related jobs





# Partners and Roles

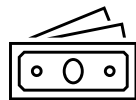


Coordination,  
Evaluation and  
Outreach

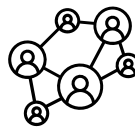


Technical  
Assistance in  
Forestry

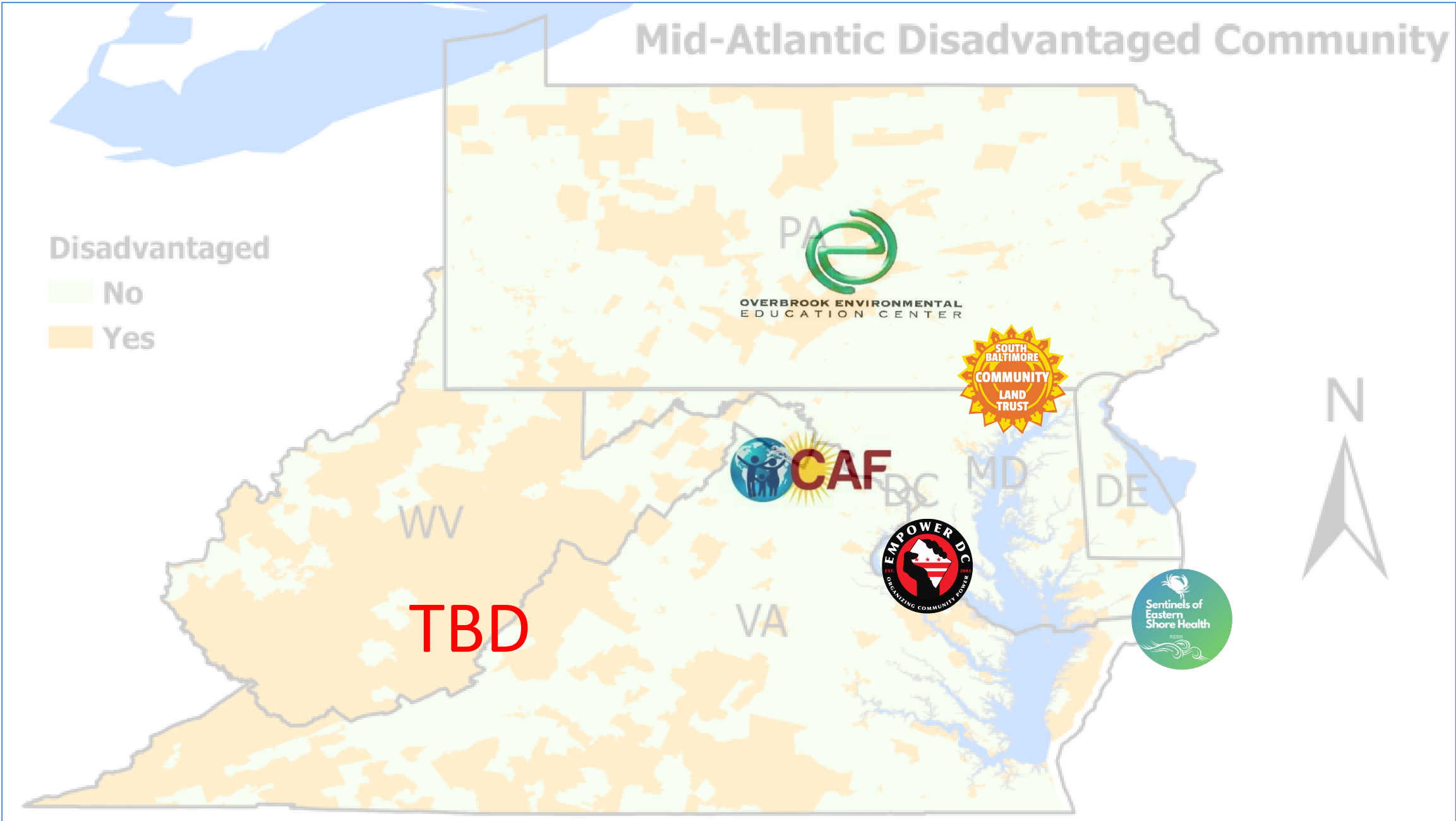
COMMUNITY  
ENGAGEMENT,  
ENVIRONMENTAL  
JUSTICE, &  
HEALTH



Funding and Counseling



Regional Connector Groups: Outreach, Engagement, and Assistance





# Participatory Structure



Collaborative RFP:  
Funders and EJ Hub partners will develop it



Co-production of urban forestry programming  
Professional forestry tools and software used by community members



Participatory decision-making:  
Technical Review Committee will include paid community experts



Results-based accountability model:  
Baseline measures and evaluation tools – Public Dashboard



# Who Can Apply?



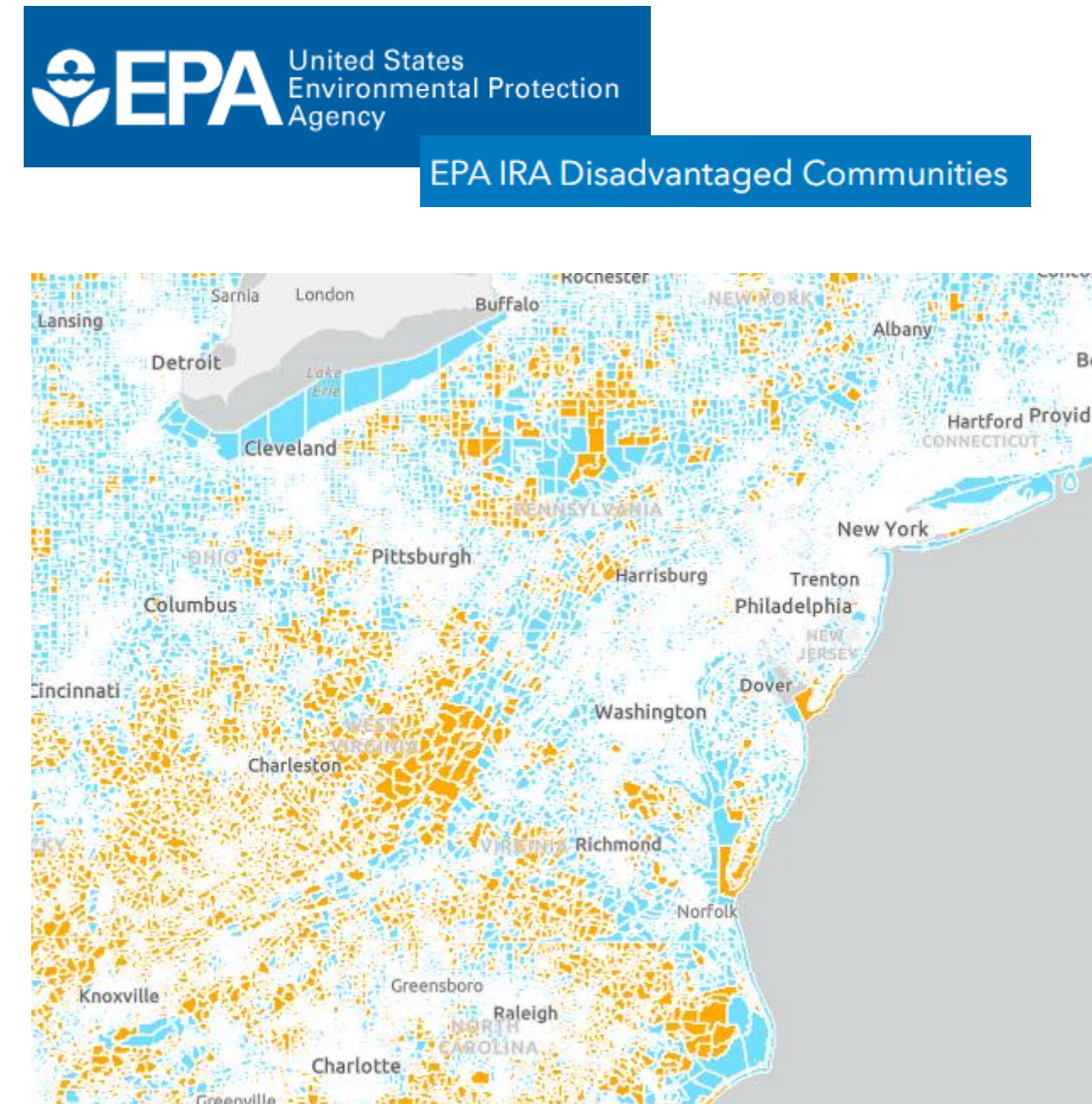
## Applicant's Eligibility

From the Mid-Atlantic Region:  
DC, DE, MD, PA, VA, WV

Disadvantaged populations and communities experiencing environmental injustices, particularly those experiencing tree canopy disparities

100% of grantees will be from a disadvantaged community

Federally approved EJ mapping and screening tools

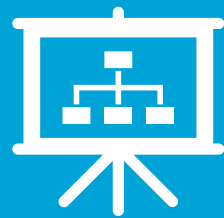




# Tracks



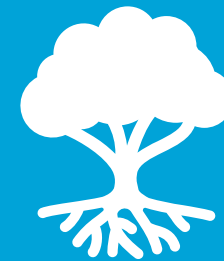
## Track 1



**EJ NGOs Capacity Building,  
Assessment, and  
Implementation**

Increase their ability to advance forestry planning, planting, and maintenance efforts through training and technical assistance

## Track 2



**Tree Canopy for Resiliency**

Tree planting and tree canopy improvements to address local public health, climate change, ecologic, and environmental issues like air pollution and stormwater management

## Track 3



**Workforce Development in  
Urban and Community  
Forestry**

Development of programs that engage residents in job training programs focused on tree canopy implementation



# Questions?



## Thank You!

For more information visit  
**[cbtrust.org](http://cbtrust.org)**