

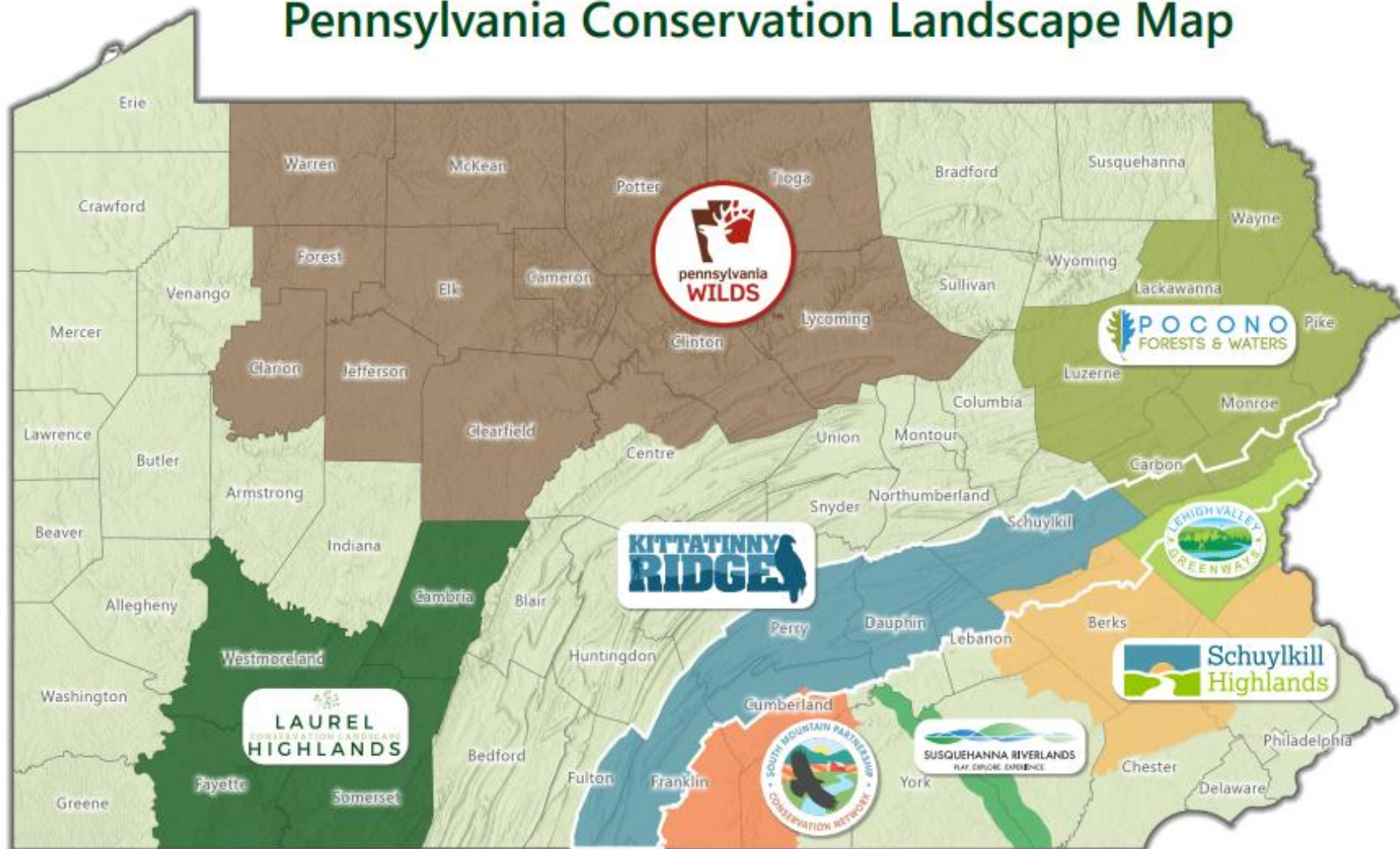


Pennsylvania's Conservation Landscape Program

A Model for Large Landscape
Conservation & Community
Revitalization

June 2025

Pennsylvania Conservation Landscape Map



Landscape Name	Lead DCNR Contact	Email
Kittatinny Ridge	Kristen Hand	khand@pa.gov
Laurel Highlands	Adam Mattis	amattis@pa.gov
Lehigh Valley Greenways	Rob Neitz	rneitz@pa.gov
Pennsylvania Wilds	Meredith Hill	mehill@pa.gov
Pocono Forests and Waters	Tim Dugan and Christine Dettore	tdugan@pa.gov ; cdettore@pa.gov
Schuylkill Highlands	Danielle Guttman	dguttman@pa.gov
South Mountain	Tyler Semder	tsemder@pa.gov
Susquehanna Riverlands	Lori Yeich	lyeich@pa.gov

Updated: September 3, 2024

Conservation Landscapes



- Accomplish DCNR's mission through partnerships that promote efficient, effective programs that respond to community needs and shared goals.
- Place-based approach to coordinate strategic investment and action in large landscapes, around the values of sustainability, conservation, outdoor recreation, and community revitalization.
- [Pennsylvania's Conservation Landscape Program](#)

Key Program Elements

- Presence of DCNR lands
- Sense of urgency & readiness
- Civic engagement
- Partnerships
 - Shared Vision/Values/Priorities
 - Interagency involvement
 - Leverage other \$
- Strategic investments (resource & grant including mini-grants)
- Deployment of DCNR Bureaus in a PLACE / Region.



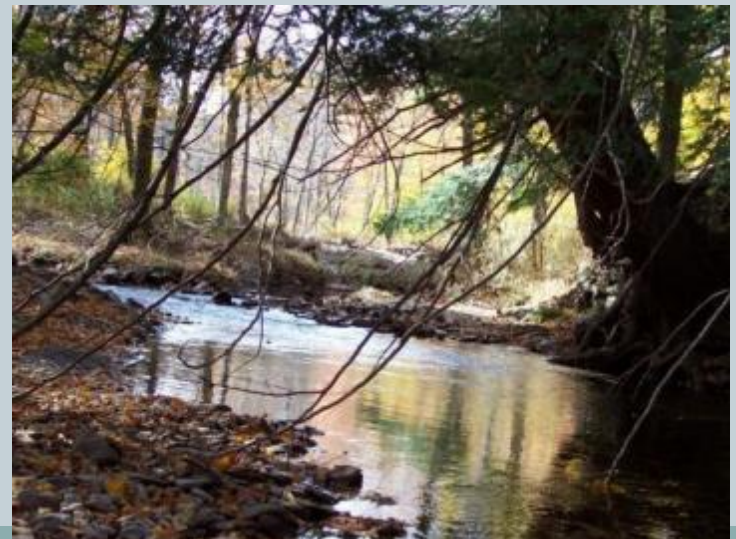
Landscape Teams



- Overall shared vision and goals.
- Annual work plans.
- DCNR staff coordinator – “Internal Lead”
- Non-profit partners convening and organizational role – “External Lead”
- DCNR cross-bureau staff involvement
- Evaluation and modifications to address new opportunities.

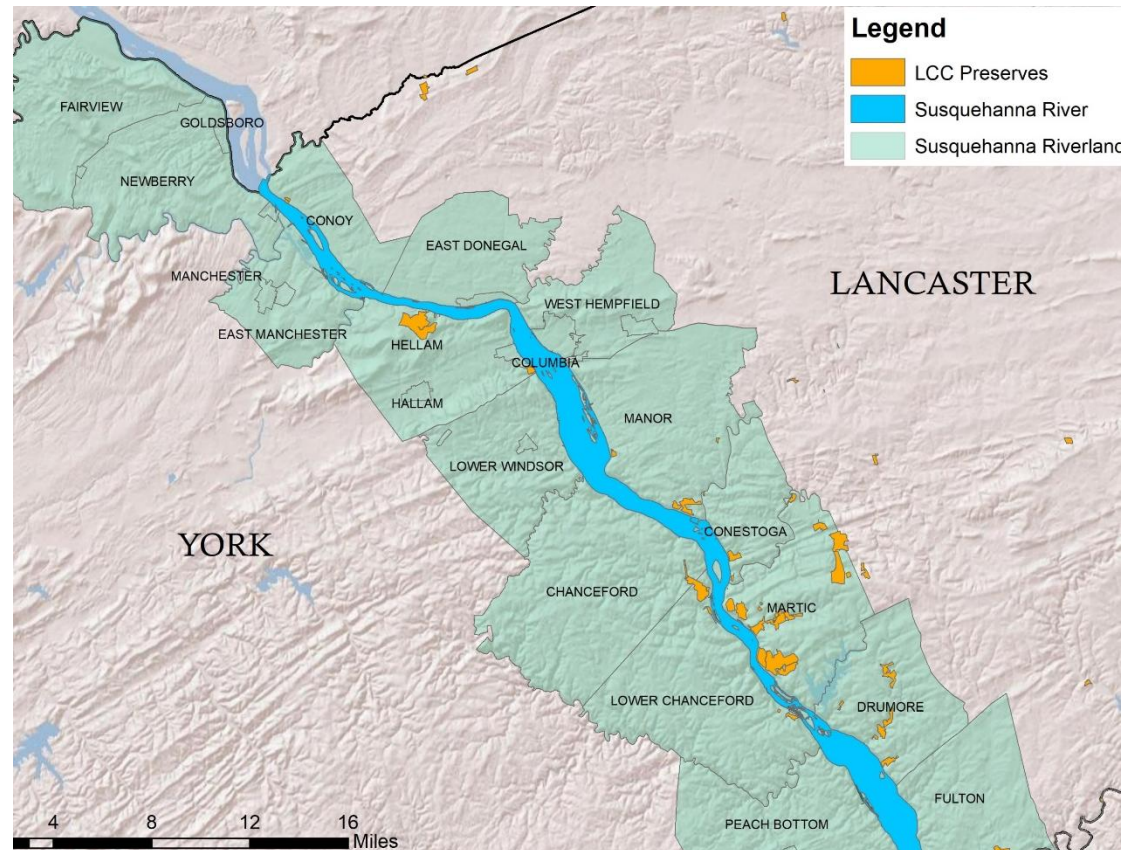
Priority Projects

- Landscape Teams work on priorities that...
 - Conserve land for parks, trails, and critical habitat
 - Protect watersheds and greenways
 - Create walking and biking trails
 - Protect habitats
 - Reduce forest fragmentation
 - Revitalize communities
 - Contribute to sustainable economic development
 - Often multi-county



Susquehanna Riverlands Conservation Landscape seeks to enhance the rich landscape of the Susquehanna River corridor through increased land protection, natural and cultural resource stewardship, increased public connection to these resources, and promoting sustainable economic development strategies keyed to heritage and eco-tourism.

Susquehanna Riverlands

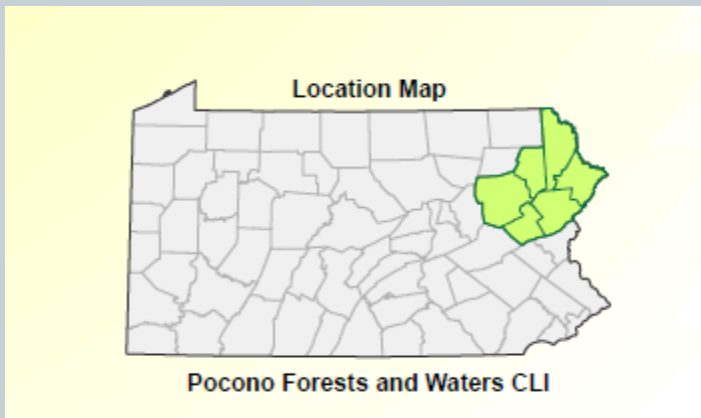


“A ribbon of scenic, recreation and historic assets along both shores of the Susquehanna River in York and Lancaster Counties.”

Pocono Forests & Waters



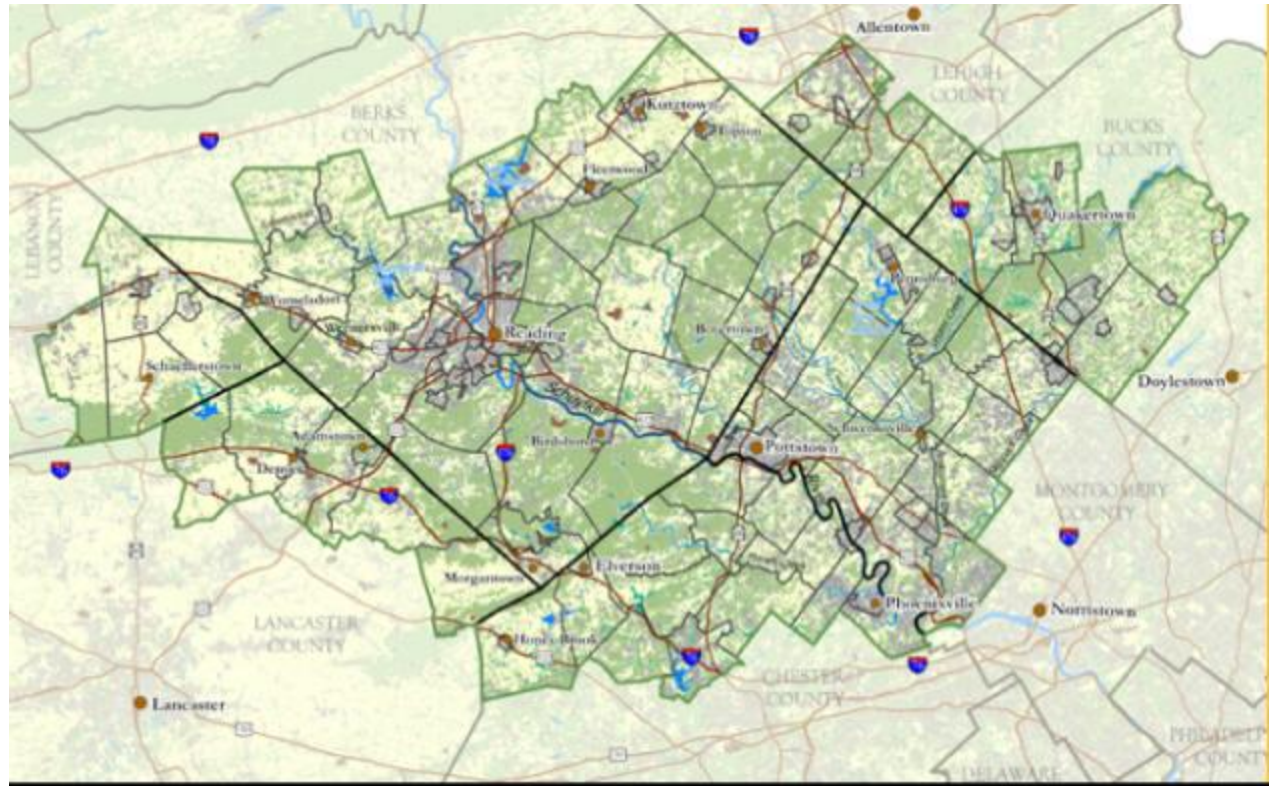
The vision of the Pocono Forests and Waters Conservation Landscape is to conserve the natural environment and enhance the quality of life by sustaining vital natural resources.



“Home to the greatest concentration of wetlands in the state.”

Schuylkill Highlands

Partners are working to protect the natural and cultural resources; encourage economic development that creates a sustainable regional landscape; and inspire people to care for, enjoy, and explore the Schuylkill Highlands.



“Contains the largest remaining forest block in southeastern PA.”

Lehigh Valley Greenways



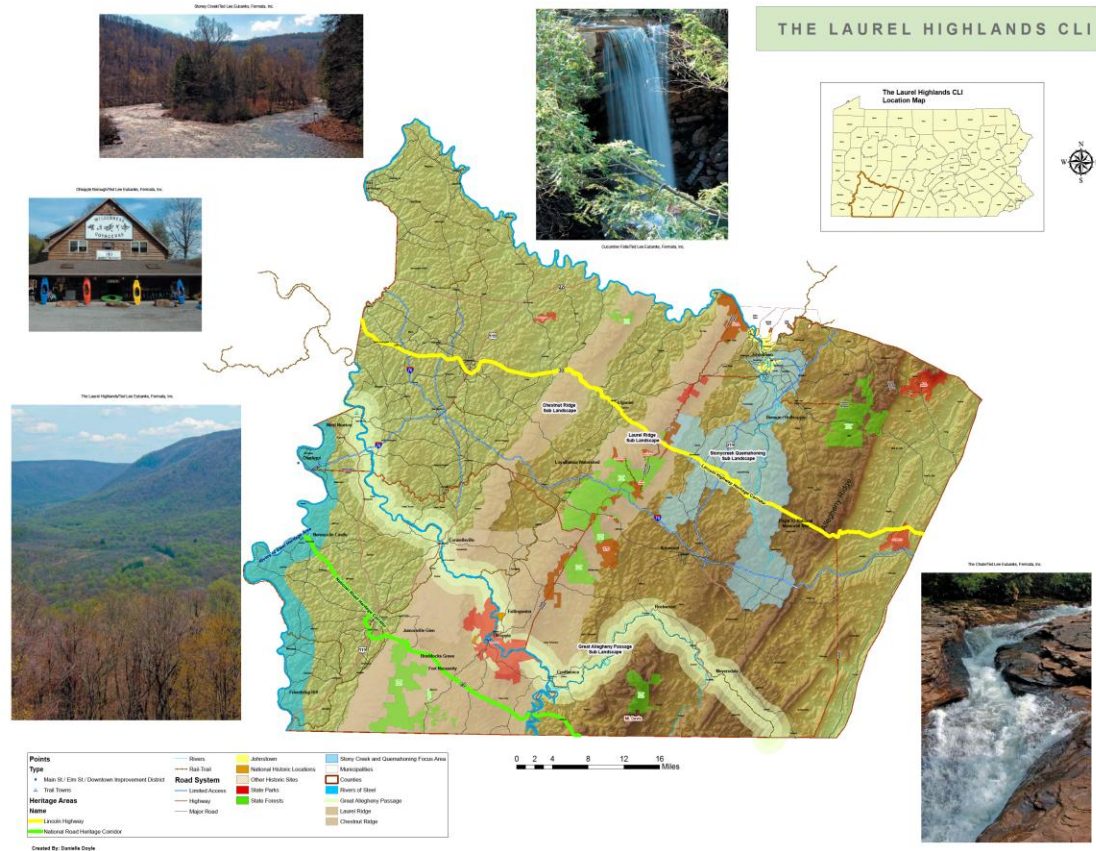
A collaborative state and local partnership striving to conserve and connect people to valued natural resources in the LV through targeted outreach, recreation, education and land protection.



“Conserving and connecting the green in one of the fastest growing parts of the state.”

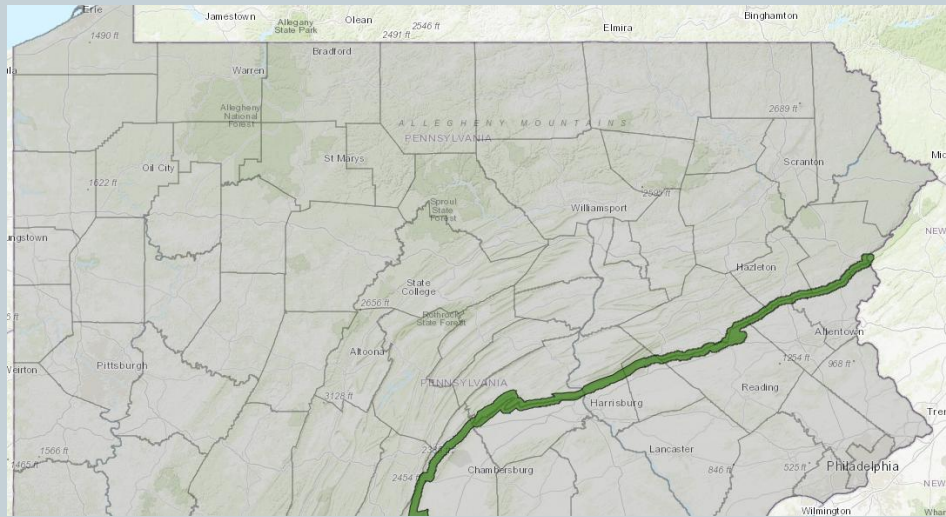
Laurel Highlands

The overall goal of the Laurel Highlands Conservation Landscape is to transform the region into a premier outdoor recreation and heritage tourism destination through strategic planning and project implementation that fosters stewardship and protects the region's unique natural and man-built environments as the means to a sustainable regional economy.



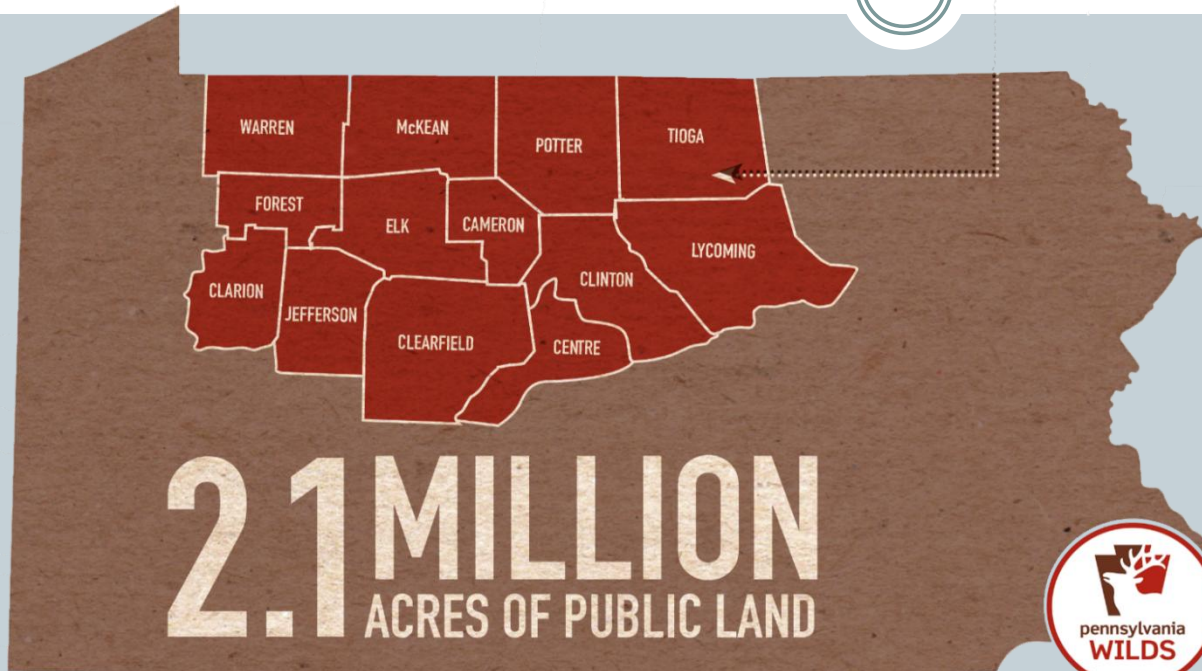
“Sub-landscapes include: Laurel Ridge, Chestnut Ridge, the Great Allegheny Passage, and the Stonycreek-Quemahoning.”

Kittatinny Ridge



- Known to the Lenni Lenape as *Kittatinny*, or “endless mountain,” the 185 mile ridge provides a bounty of ecological services and recreational opportunities.
- Global Important Bird Area
- Recently designated a DOD “Sentinel Landscape.”

Pennsylvania Wilds



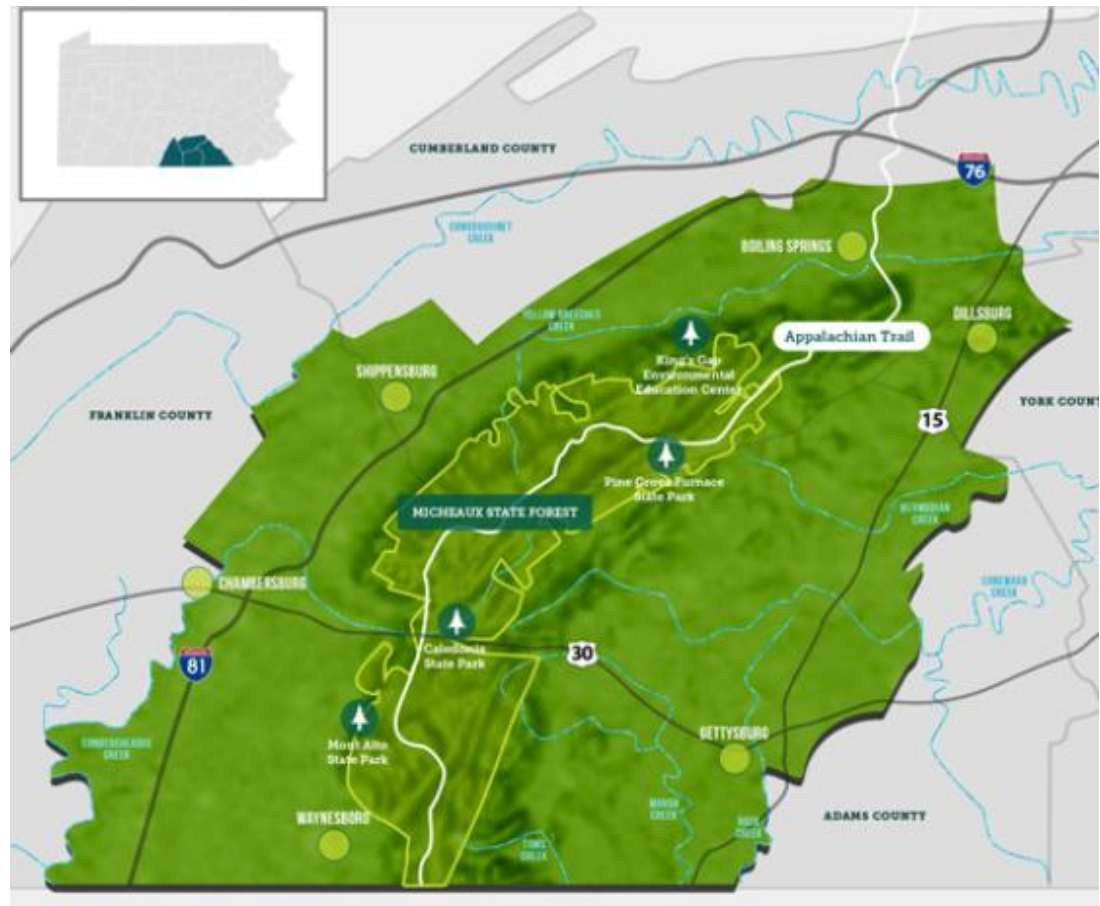
© 2017 PA Wilds Center for Entrepreneurship, Inc.

“Hosts the state’s only National Forest, largest wild elk herd in the northeast, two National Wild and Scenic rivers and an international dark sky park.”

Work in this large rural region (*one-fourth of the state’s land area but only 4% of state’s population*) is focused on its extensive public lands as an outdoor recreation destination and integration of conservation and economic development in a way that strengthens and inspires its communities.

South Mountain

The South Mountain Partnership is a unified group of private citizens, business, not for profit organizations and governmental officials working to protect, preserve and enhance the South Mountain Landscape in Central Pennsylvania.



“Some of the most productive agricultural lands in the state are here – e.g. the South Mountain Fruit Belt.”

Program Best Practices

“Models of Successful Collaboration -- 2019

Demonstrating the value of taking a landscape-scale approach.



2019

PENNSYLVANIA
CONSERVATION
LANDSCAPES

*Models of Successful
Collaboration*

elibrary.dcnr.pa.gov/GetDocument?docId=1750563&DocName=PA_Conservation_Landscapes_Report2019.pdf

Questions / More Information



<https://www.dcnr.pa.gov/Communities/ConservationLandscapes>

Meredith Hill – mehill@pa.gov

