

PROTECTED LANDS WORKGROUP

PLWG & HWGIT Meeting (10/21/2024)



Image Credit: Chesapeake Bay Program



AGENDA

WORKGROUP BACKGROUND

Intent of the workgroup and collaboration with partners.

DATA AND PROTECTION PROGRESS

How we collect our data and our most recent progress towards our goal.

WORK PLAN

Review themes and actions from the PLWG 2-year work plan.

PROJECTS AND FUTURE COLLABORATION

Overview of upcoming projects and areas for future collaboration among the HWGIT and PLWG.

WORKGROUP BACKGROUND

DANIEL KOVAL



Image Credit: Chesapeake Bay Program

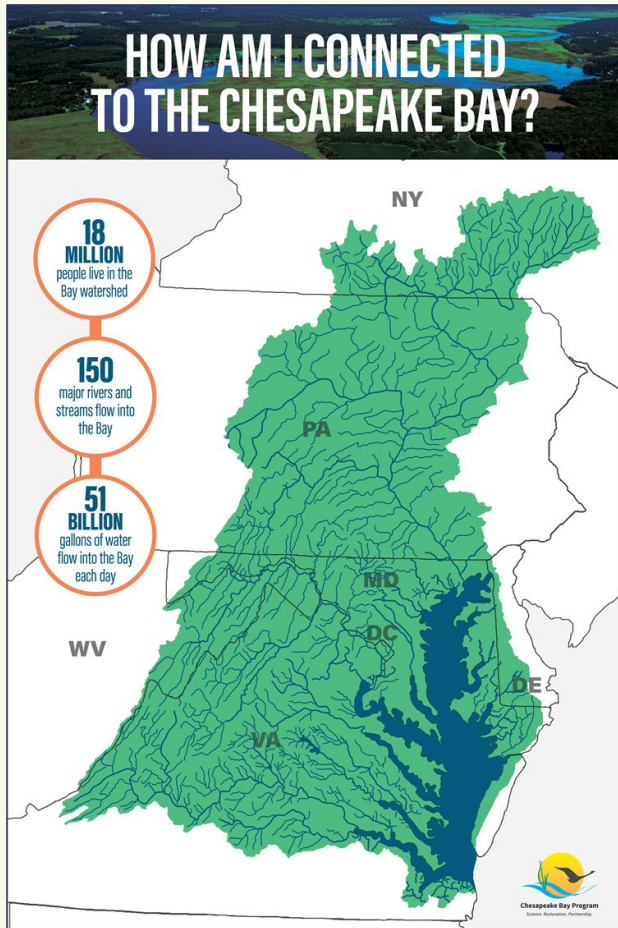
PROTECTED LANDS GOAL

- Conserve landscapes treasured by communities in order to maintain water quality and habitat; sustain working forests, farms and maritime communities; and conserve lands of cultural, indigenous, and community value

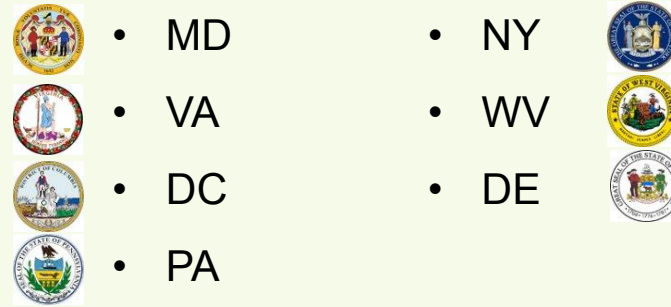
PROTECTED LANDS OUTCOME

- By 2025, protect an additional two million acres of lands throughout the watershed currently identified as high-conservation priorities at the federal, state, or local level
- Including 225,000 acres of wetlands and 695,000 acres of forest land of highest value for maintaining water quality.

WORKGROUP BACKGROUND



WATERSHED JURISDICTIONS



LEAD FEDERAL AGENCIES



DATA AND PROTECTION PROGRESS

SOPHIE WATERMAN & JOHN WOLF

TRACKING AND REPORTING- THE INDICATOR:

Tracking progress toward protecting land from development is critical to understanding our progress toward enhancing climate resilience.

- [Protected Lands Indicator](#)

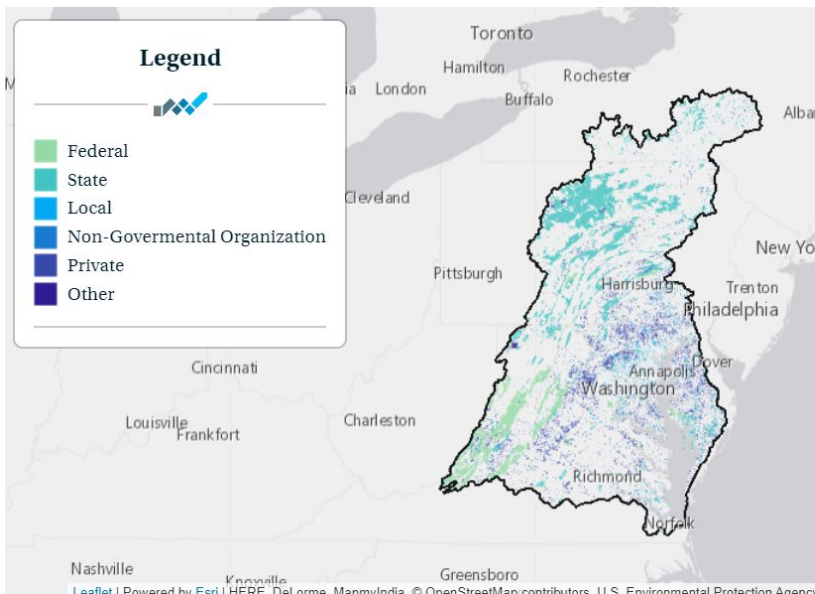


Image Credit: Chesapeake Bay Program

PROGRESS (2022):

- Data collected through 2022, indicates that nearly 1.64 million acres of land in the Chesapeake Bay Watershed has been permanently protected since 2010.
- Represents approximately 82% of the watershed
- 130,000 acres on average per year (min rate is 121,844)
- There is 365,533 acres remaining - at the current rate, based on 2022 data, we will meet our 2025 goal.

DATA AND PROTECTION PROGRESS- **2024 DATA CALL**

SOPHIE WATERMAN & JOHN WOLF



Image Credit: Chesapeake Bay Program

Closing Out the Agreement

We will be conducting one final protected lands Indicator data call in the current collection state to have a final data point for the 2014 Chesapeake Bay Agreement.

Just like 2022

- This data call will look almost identical to the 2022 call, data providers.
- Providers will be given a framework document to help guide them through the required fields.
- Providers will be asked to send their data to **Sophie Waterman and Coral Howe**.

Timeline?

- We will be sending out the official request in early winter.
- We are requesting that data be in our hands by **January 31, 2025**.
- *If you feel like you can not meet that deadline please email Sophie Waterman*
(swaterman@chesapeakebay.net)

DATA AND PROTECTION PROGRESS- **DATE OF ESTABLISHMENT**

SOPHIE WATERMAN & JOHN WOLF

What is the Date of Establishment (DOE)?

The year in which an area is permanently protected from development, whether by purchase or donation, through a perpetual conservation or open space easement or fee ownership for their cultural, historical, ecological, or agricultural value

Why is it Important?

- Need for meaningful Protected Lands Indicator
- Need to assess 2025 Conservation Goals
- Need for land change model
- Need for Watershed Implementation Plan Reporting
- Need for tracking of Healthy Watersheds
- Current reporting is misleading



Image Credit: Chesapeake Bay Program

Strategies to ensure it is included:

- Add/Include local data that has this attribute, not previously reported
- Capturing DOE data for new additions (create reporting system)
- Do a blanket generic date for lands older than 2000
- Do spatial joins with State Land ownership datasets to update missing DOE
- Research missing dates in land records or with managing organization

WORK PLAN

ANTHONY BOBO



Image Credit: Chesapeake Bay Program

Management Approaches and Actions:

MA#1 Focus on communications by centering materials around people and foster collaboration.

- Spread awareness for the CCP Narrative Toolkit: tools for communicating conservation messages.

MA#2 Facilitate collaborative partnerships and share information on best practices, policies, and resources.

- Develop a shared document or time at meetings for members to pass along information on new programs, policies, or helpful resources.

MA#3 Enhance means to conserve more green spaces that can improve under-resourced communities, address DEIJ and community focused efforts.

- Conduct outreach with each state jurisdiction to identify current methods for implementing community feedback in SCORPs or state management plans.

MA#4 Provide conservation data and analysis to help identify priorities and focus on where benefits can be achieved.

- Convene state GIS experts and coordinate data collection among jurisdictions and acquire the missing number of lands conserved.

PROJECTS & FUTURE COLLABORATION

AURELIA GRACIA

1. Coordinate learning opportunities among each workgroup and at partner events.
2. Create a map and/or language outlining ecosystem services throughout the watershed.
3. CCP Narrative Toolkit: tools for communicating conservation messaging.
4. Using high res data to separate out wetland conservation from non-wetland forested conservation to update information related to PLWG sub-goals.



Image Credit: Chesapeake Bay Program