

Phase 7 Decisions Planner & Topics for Office Hours

Water Quality Goal Implementation Team meeting
July 28, 2025

Presented by Jeremy Hanson, CRC, WQGIT Coordinator

Outline



Our role, governance, walkthrough and initial discussion



Framing the WQGIT's role;
Breaking down the thought process and build on the options from discussion memo



Switch to Menti to gauge group's preferences



See how things pan out



Adjustments, next steps, scheduling



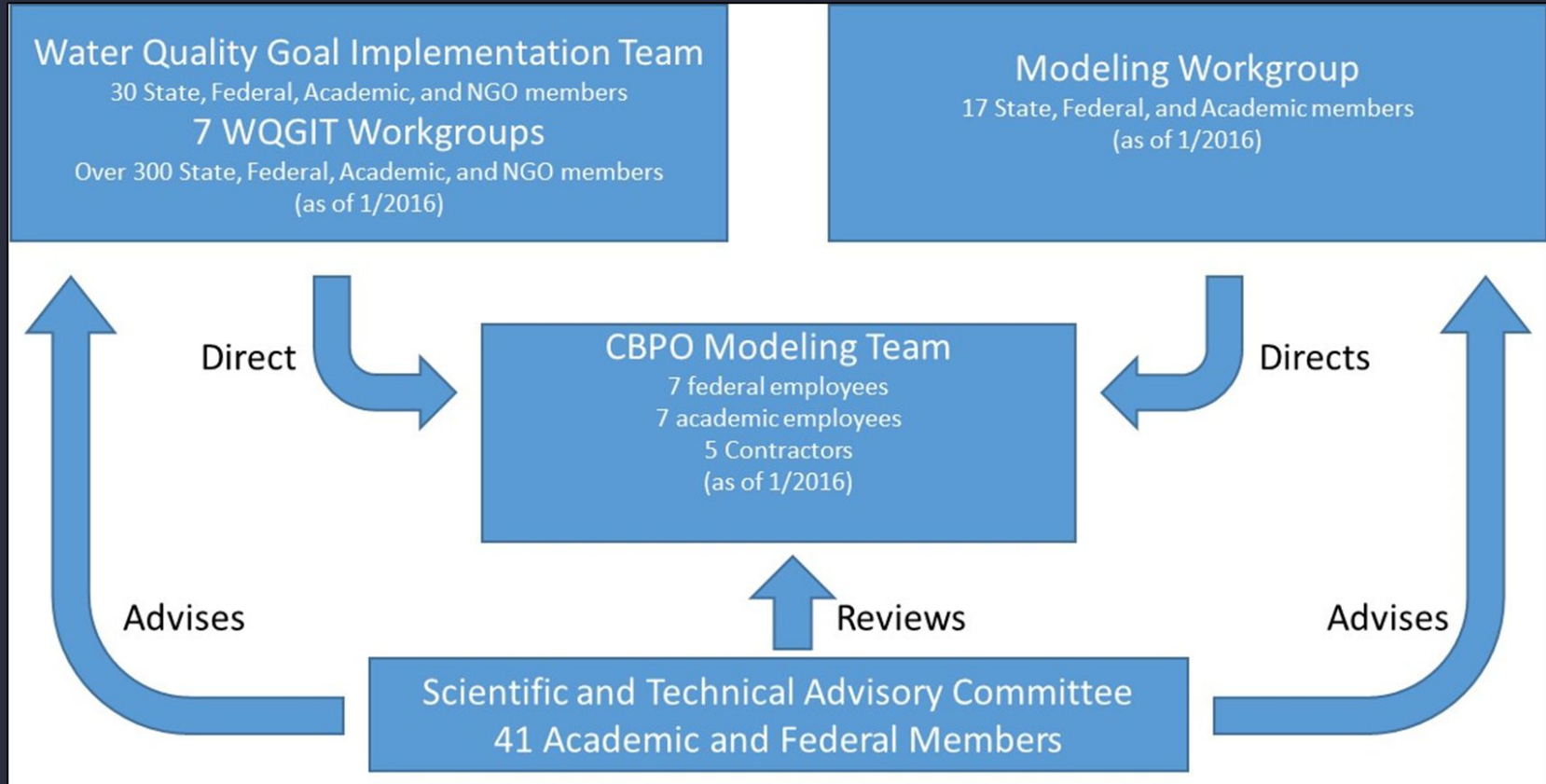
Talk about where we go from here

“Any WQGIT Workgroup decision that has cross-sector implications will come before the WQGIT membership for final approval of that decision rather than as informational briefings.” – WQGIT governance

...“cross-sector” in a Phase 7 context is complicated and we want to balance the WQGIT’s and workgroups’ technical decision-making roles

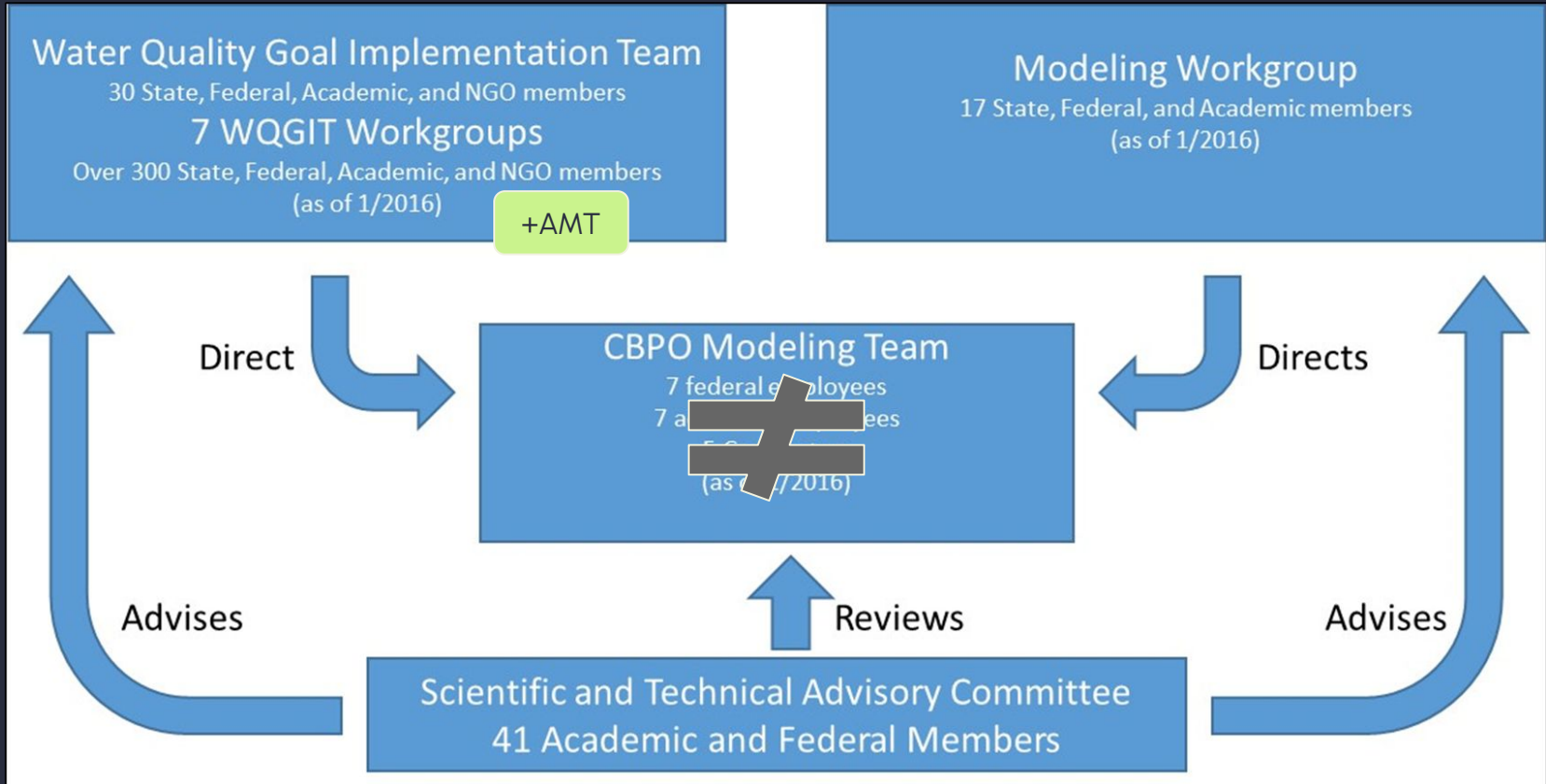
Governance

<https://cast-content.chesapeakebay.net/documents/P6ModelDocumentation%2F1%20Overview%202018%2005%2022.pdf>
https://www.chesapeakebay.net/who/group/modeling_team
<https://www.chesapeakebay.net/what/programs/modeling>



Governance

<https://cast-content.chesapeakebay.net/documents/P6ModelDocumentation%2F1%20Overview%202018%2005%2022.pdf>
https://www.chesapeakebay.net/who/group/modeling_team
<https://www.chesapeakebay.net/what/programs/modeling>



Our role

WQGIT

Cross-sector, bigger picture

Not a referee of highly technical issues or science at the sector level

Can override or make decisions for issues that are elevated to the WQGIT

In rare cases, can elevate to Management Board when consensus is not achievable

Communicates and reports to MB, PSC

Workgroups + AMT

Specific sector expertise and practitioner experience

Better able to explore technical details

Can make decisions for sector issues, collaborate with other groups on cross-sector items

Can elevate items to WQGIT if no consensus, or table until future if or when more data is available; can choose to stick with existing methods or data

CONSENSUS IS

Saying things that everyone can live with

Improvements or changes that make sense with what is currently available

CONSENSUS IS NOT

Saying everything that everyone wants to say, 100% agreement on 100% of the details

Perfect data, flawless methods, or perfect results

Where we are: we've come a long way!

Key decisions must be made by Sep 30

Issues at hand - including CAST Land uses, segmentation, etc., - are foundation for all subsequent workflow and meeting extended deadline.

Extended deadline does not allow for pushing back decisions beyond the ones already listed as exceptions.

Consensus is always messy

It was never smooth sailing

We've explored and learned a lot at the micro level

"Better is best"

Let's stay focused on our next steps

Solve and adjust where we can

In the works:

- Overall timeline connecting & stacking milestones, progress, model dev/review, etc.
- Review of data inputs prior to "Year of Review"
- Decision record/tracker



Scheduling Walkthrough

23 items by Sept 30

5 = Ag inputs

2 = BMP updates

6 = Wastewater

8 = other

2 = LU/LC

We want to solve for X & Y
X = # WQGIT decision?
Y = # info. briefing?

Scoping out decisions/briefings at GIT level

Option A

All 23 items, or nearly all, as active WQGIT decisions

No informational briefings, only decisional and pre-decisional agenda items

Option C (decision tracker)

5 WQGIT decisions (1 already done)

Can flex +/- a few decisions (5 - 9)

+ Briefings for other topics TBD

Option B

Somewhere between ~10 and ~15 WQGIT decisions, e.g., Option C + all "gray area" items

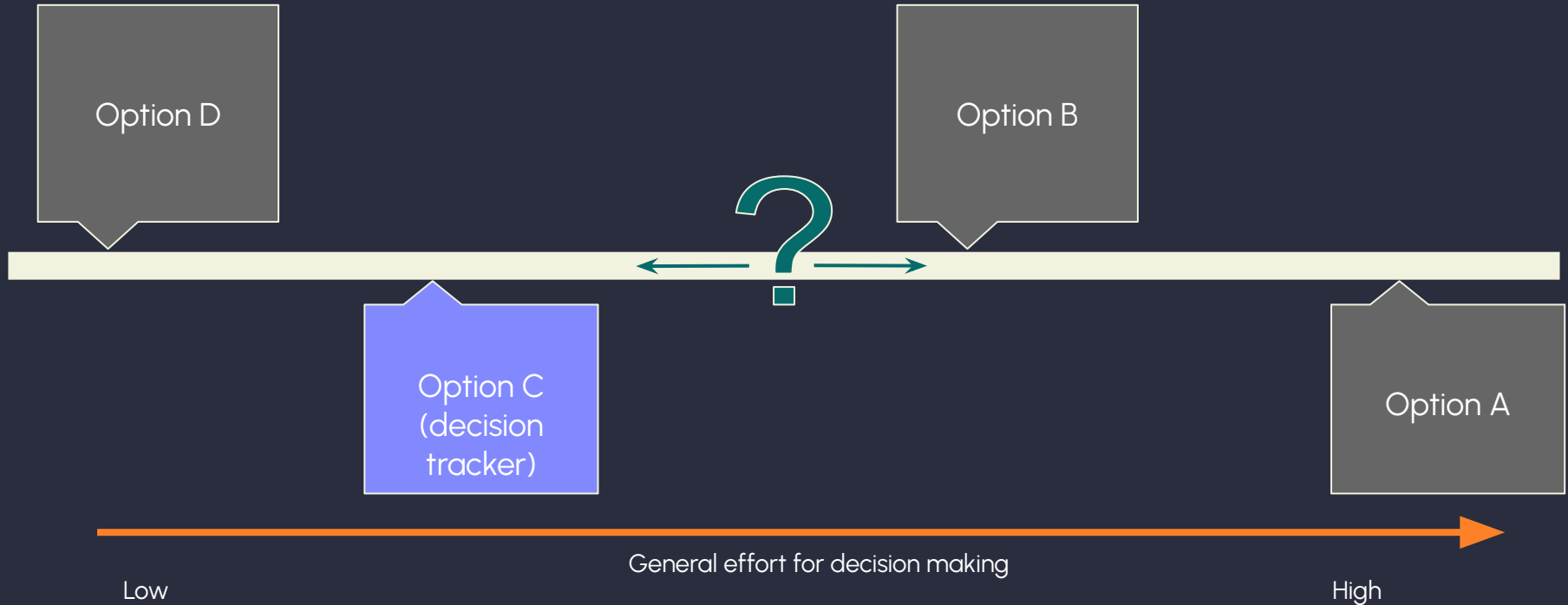
+ Briefings for other topics TBD

Option D

4 WQGIT decisions (1 already done)

+ Fewer briefings for topics TBD

Finding our spot: macro scale



Finding our spot: issue scale

If low interest: is a briefing or Q&A desired at office hours? (+1 to Y or not?)

If high interest: +1 to X, our decision count and push us from Option C/D → B/A



“Cross sector” issues – baseline

These are the items queued for WQGIT decision under Option C (draft decision tracker)

- Land-River segmentation
- Agroforestry EPEG recommendations
- Urban Nutrient Management recommendations
- Land Use aggregation to Phase 7 Land Use
- CAST Load Sources

Our Mentimeter won't cover these, we are already lining these up for WQGIT decision

The Mentimeter will cover the following issues, using the same groups/buckets

Items in the “gray area”

These items, or a subset, may be next in line for potential WQGIT decision, pending today's discussion. They could also be informational if desired.

BMP Excess

Construction Acres

Exfiltration estimation methods

Land Use back-cast

Do we
add to X,
Y or
neither?
Odds
seem
even split

“Cross sector” issues – briefing?

Based on past input, these may also be of interest for the WQGIT, perhaps for a briefing or Q&A at office hours, if not a decision:


- Animal population data
- Broiler nutrient updates
- Cover crop excess
- Inorganic fertilizer
- Land use loading rate ratios for managed hay and managed pasture
- Septic counts/population methods
- Sewer service areas
- CSO loads

More likely Y,
but could be
X, or neither

More sector specific

WQGIT decision seems least likely or warranted:

- Boat pump outs*
- SSO loads*
- MS4 areas
- Upland reductions for non-exclusion buffers
- Federal BMP load sources
- Federal boundary layer

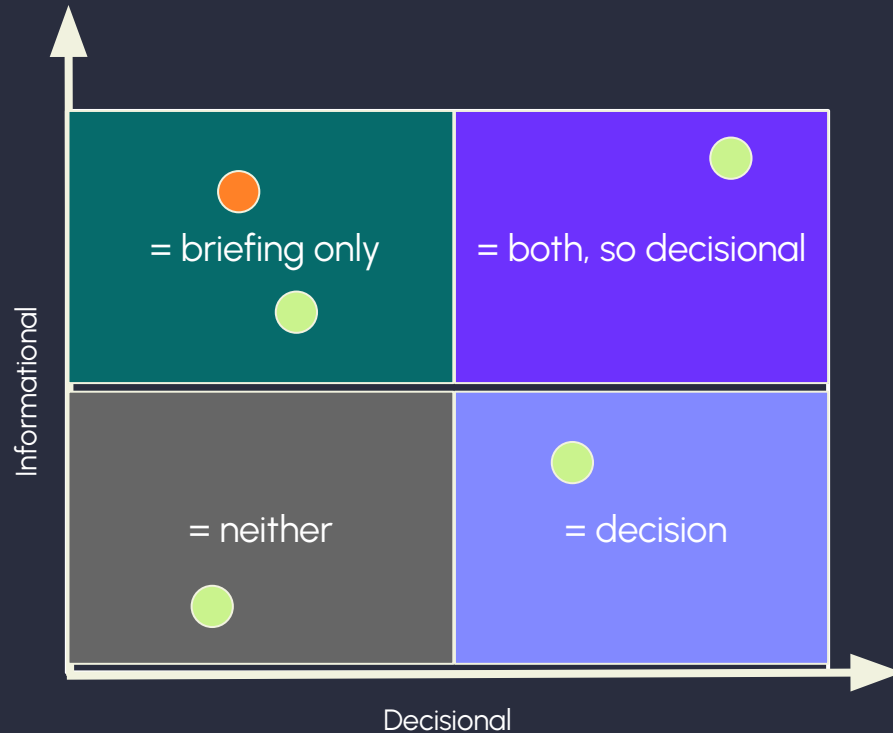


More likely
neither, but
maybe Y?
Long-shot X

* WWTWG likely not pursuing these for P7, decisions in process

**Before we switch to the
Mentimeter**

You'll rank items 2-dimensionally...



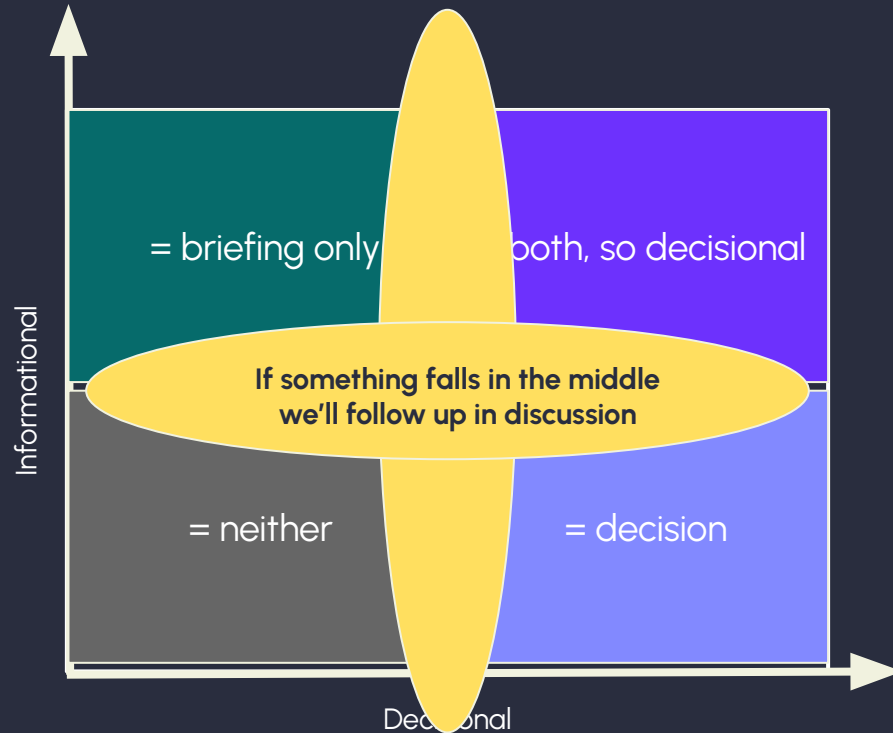
We frame it in binary terms to help get an aggregate picture

0 = No or leaning no, this is not decisional [or informational] for the WQGIT

1 = Yes or leaning yes, this is decisional [or informational] for the WQGIT

For each issue you can say "1" for both, or "0" for both, if you want.

For borderline cases...



We'll switch to the Mentimeter next and do a practice question before we go through the issues

Three teal semi-circles of increasing size are arranged horizontally on the left side of the slide. The word "Scheduling" is written in white, bold, sans-serif font, centered over the largest semi-circle.

Scheduling

◆ Not wastewater topics

▲ Not ag topics

● Not LU topics

Optional Office hours

Fri Aug 15, 1–3pm



Mon Aug 18, 1–3pm



Tue Aug 26, 12–2pm



Wed Sep 3, 11am–1pm



Mon Sep 15, 1–3pm



Thu Sep 18, 2–4pm

Thank you