



**Chesapeake Bay Program**  
*Science. Restoration. Partnership.*


July 28, 2025

# **Draft Phase 7 Land-River Segments (LR-Segs)**

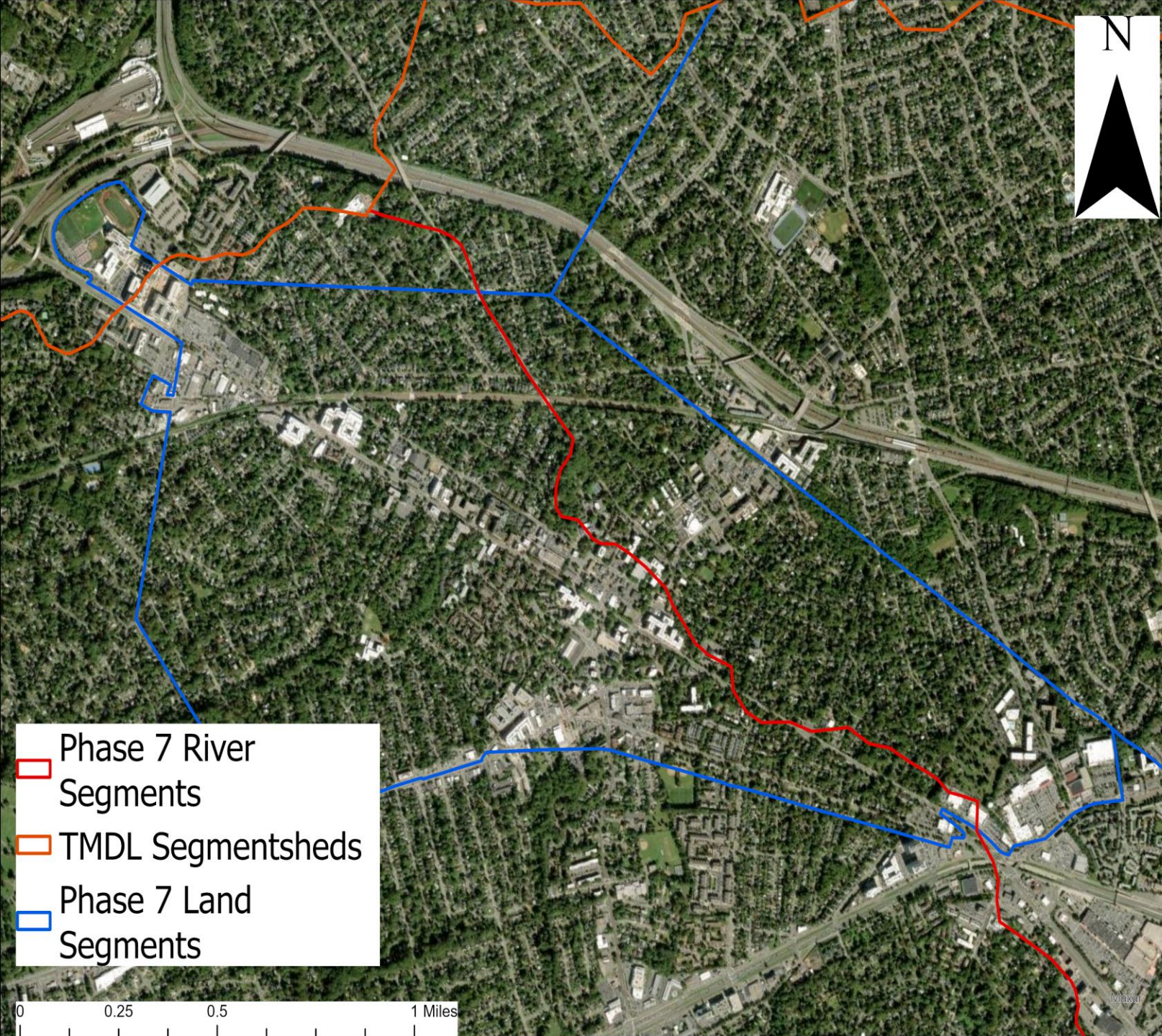
WQGIT Meeting  
Andy Fitch, USGS

# Land-River Segments – Option B

	Phase 6	Phase 7 Option B
Total Area (acres)	60,104,160	60,044,248
# of Segments	2,058	3,608
# of Segments < 1000 Acres	204	373
# of Segments < 100 Acres	4	59
Minimum Segment Size	~19 acres	~14 acres
Average Segment Size	29,205 acres	16,641 acres
Median Segment Size	11,680 acres	10,526 acres







Example of why a Land-River Segment < 1000 acres is legitimate: County Boundaries crossing P6 Segmentshed boundaries.

Location: Falls Church, VA





P6 Segmentshed boundaries don't align with county boundaries along ridgelines.

Location: Southeastern edge of Randolph County, WV