



Chesapeake Bay Program
Science. Restoration. Partnership.

June 23, 2025

Draft Phase 7 Land-River Segments (LR-Segs)

WQGIT P7 Office Hours

Alex Gunnerson, Arlluk/CBPO Contractor

Agenda

- 1** Brief Recap of June and July WQGIT Discussions
- 2** Revisions Based on WQGIT Feedback
- 3** Q&A

Background

Brief Recap of June and July WQGIT
Discussions

Takeaways From Previous WQGIT Meetings

- Desire to maintain HUC 12 boundaries
- Willing to tweak segmentshed boundaries slightly when presented with better data (shoreline, updated watershed boundary)
- Eliminate slivers and small polygons along ridgelines and adjacent to tidal waters

NOTE

For today's discussion, we will be looking at the number of LR-segs **within the Chesapeake Bay watershed.**

Revisions Based on WQGIT Feedback

Revisions – Eliminated Small Polygons

- Eliminated small polygons along ridgelines and adjacent to tidal waters.
 - NOTE: This did not shrink the total number of LRsegs because these were multi-part polygons.



Before

Multi-part polygons in
Option B

Location: Tidal Potomac,
Northumberland County, VA

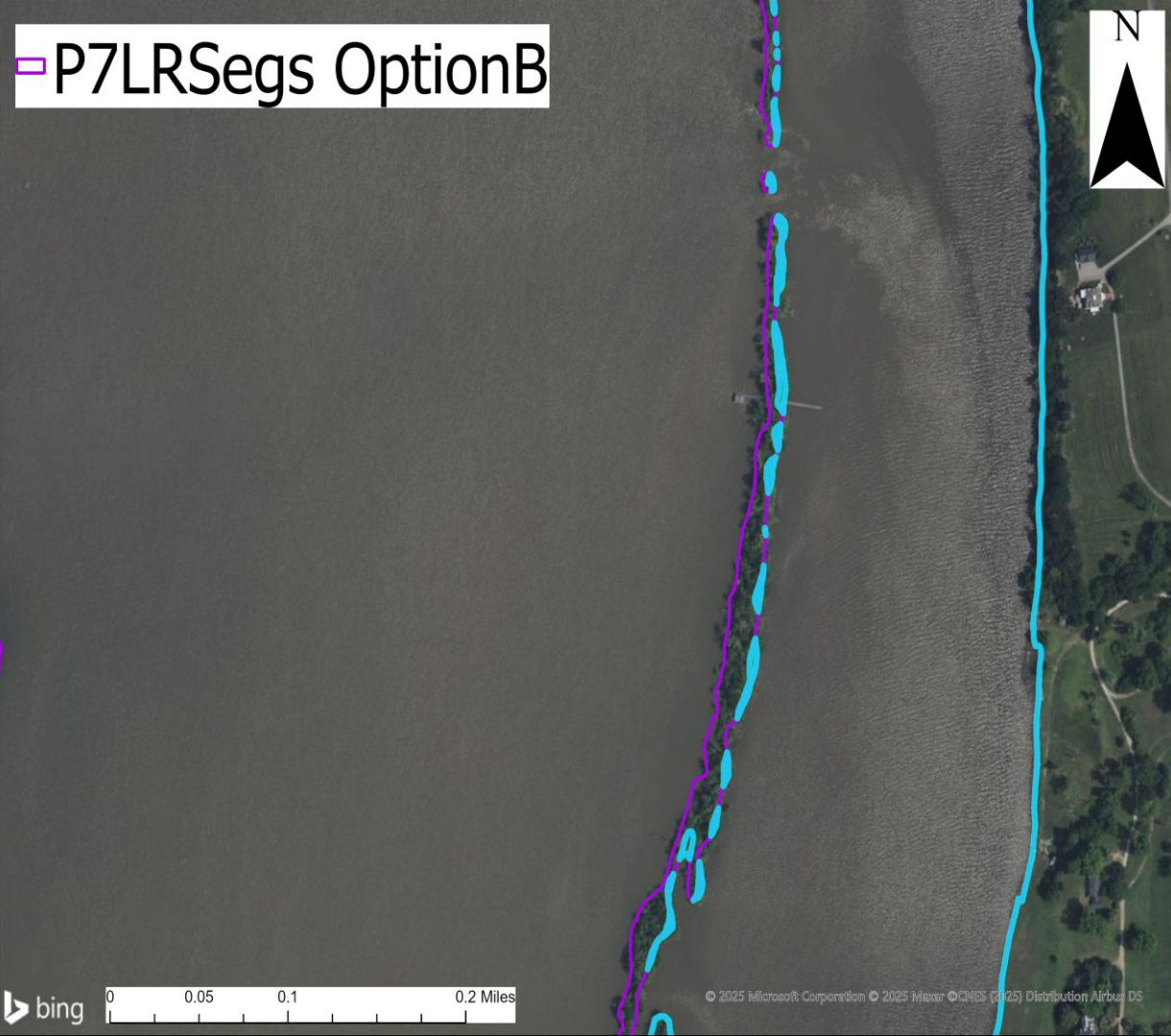


After

Multi-part polygons
removed in the revised
version

Location: Tidal Potomac,
Northumberland County, VA

□ P7LRSegs OptionB



Before

Multi-part polygons in
Option B

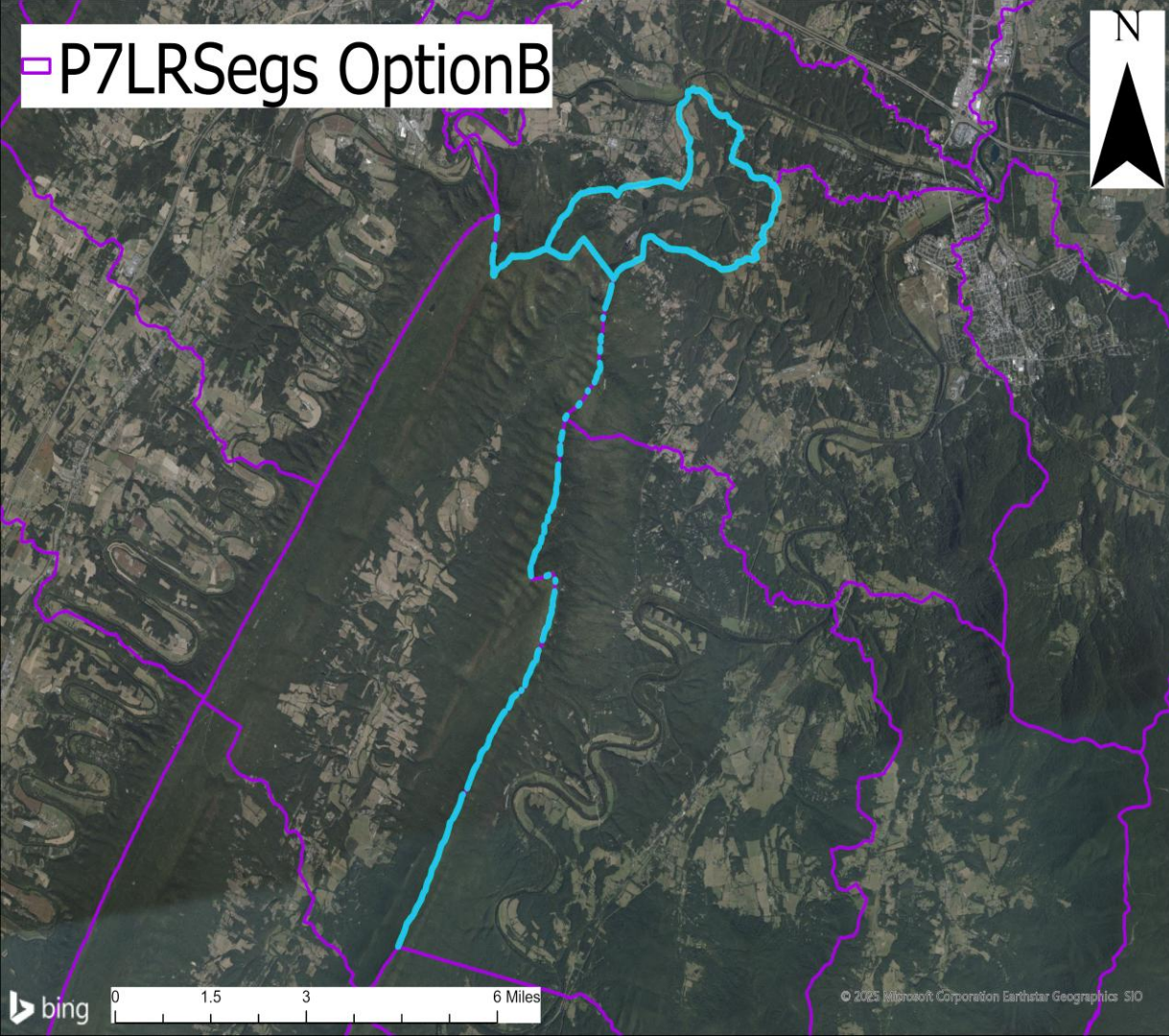
Location: Tidal James,
Henrico & Chesterfield
Counties, VA



After

Multi-part polygons removed in the revised version

Location: Tidal James, Henrico & Chesterfield Counties, VA



□ P7LRSegs OptionB



Before

Multi-part polygons in
Option B

Location: Ridgeline in the
Potomac Watershed, Warren
and Shenandoah Counties, VA

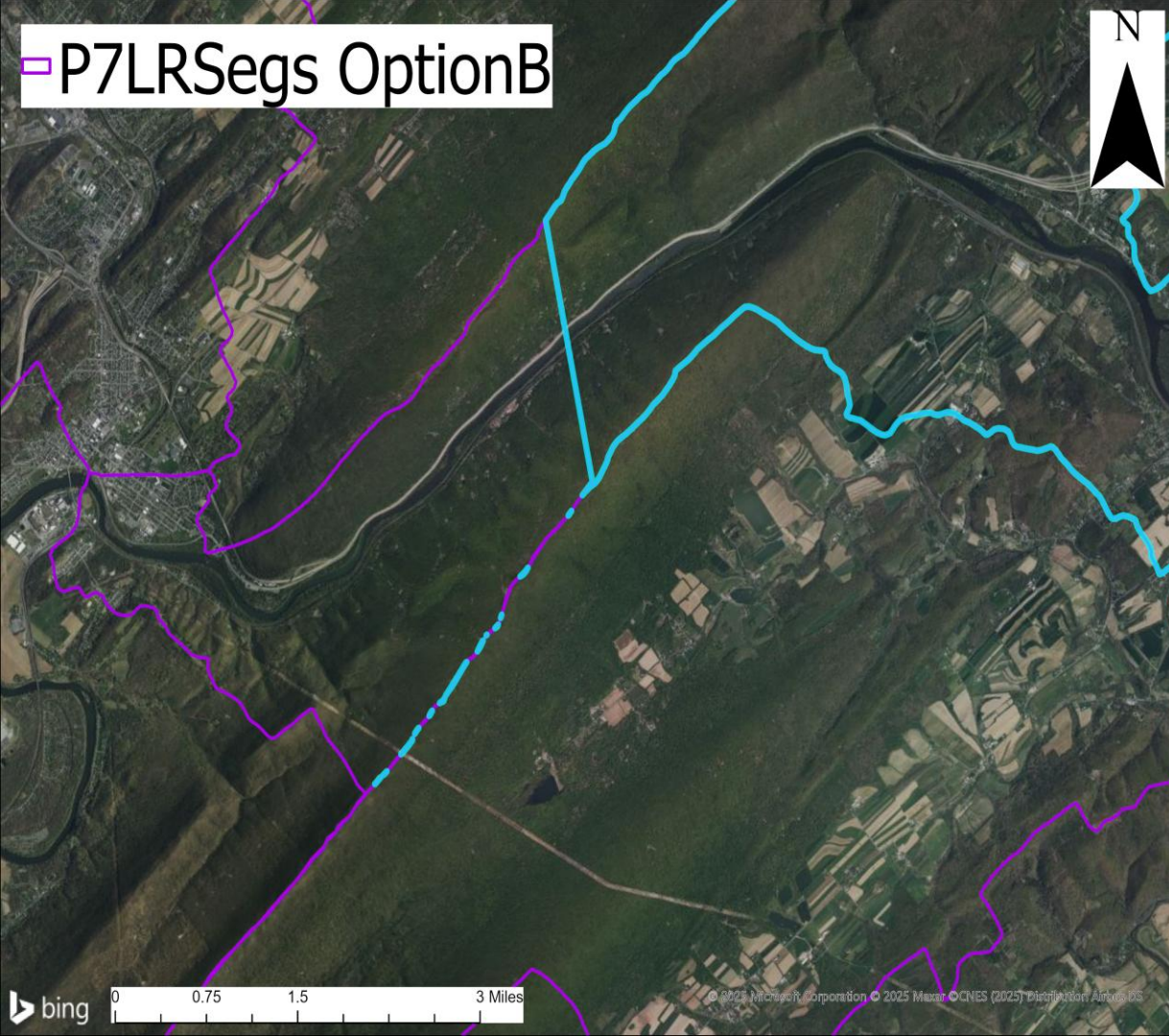
P7LRSegs Revised OptionB



After

Multi-part polygons
removed in the revised
version

Location: Ridgeline in the
Potomac Watershed, Warren
and Shenandoah Counties, VA



□ P7LRSegs OptionB



Before

Multi-part polygons in
Option B

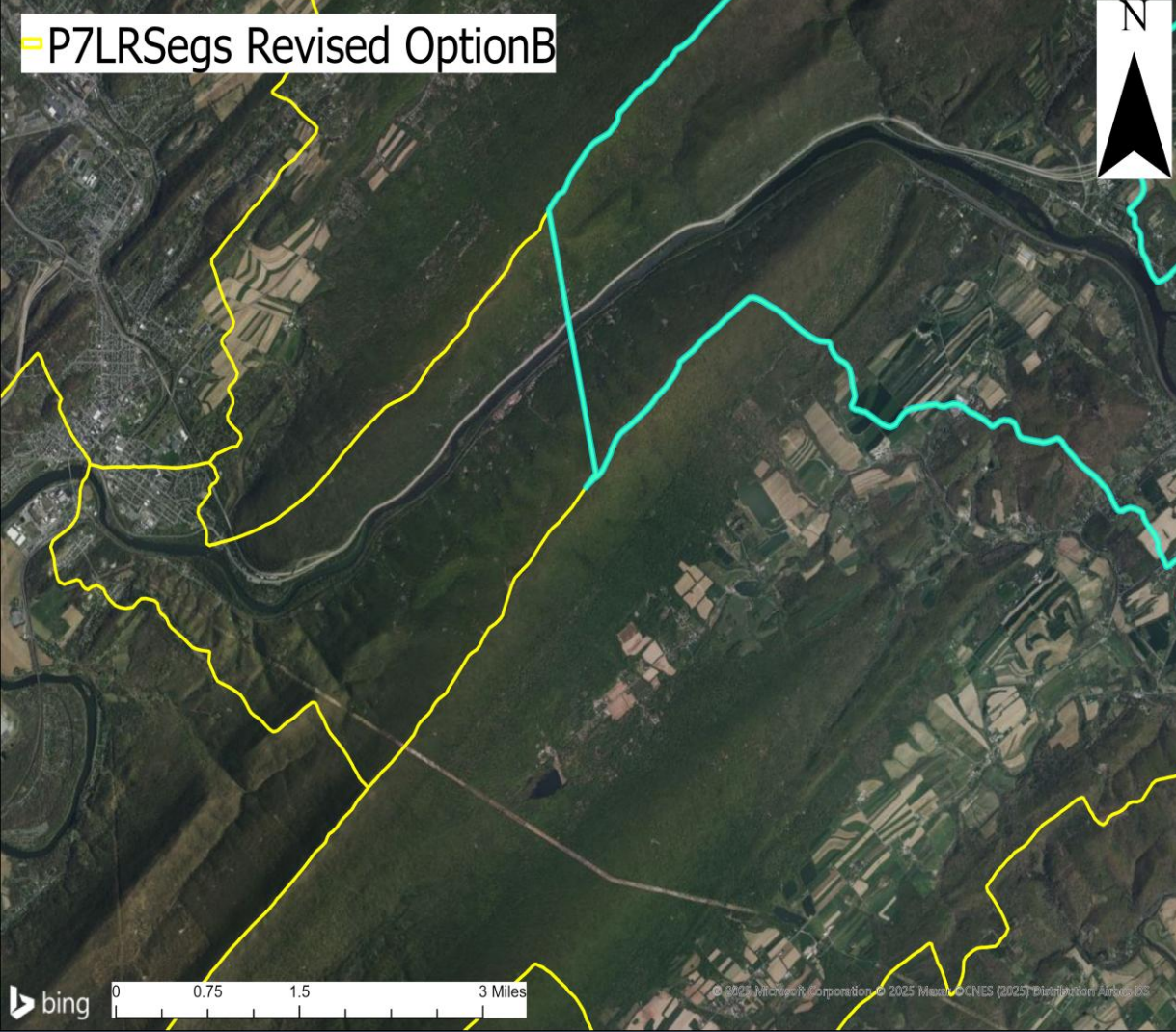
Location: Ridgeline in the
Susquehanna Watershed,
Mifflin and Juniata Counties,
PA



After

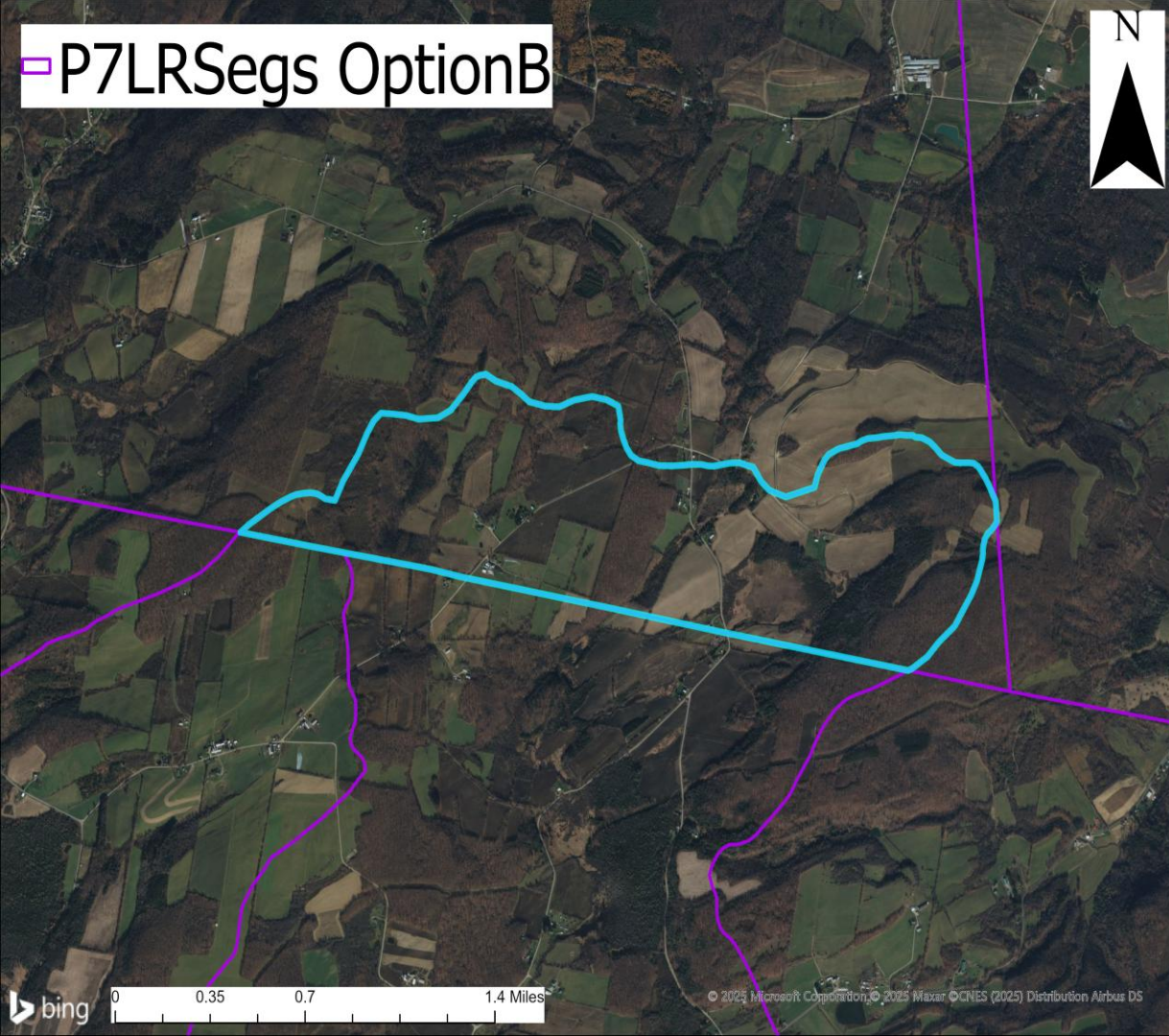
Multi-part polygons removed in the revised version

Location: Ridgeline in the Susquehanna Watershed, Mifflin and Juniata Counties, PA



Revisions – Preservation of HUC 12s

- Reverted back to original HUC 12 boundaries for multi-part polygons on the boundary of the Chesapeake Bay watershed.
 - This added 11 Land-River Segments compared to the original Option B.
 - 5 in NY, 4 in VA, 1 in WV, 1 in MD



P7LRSegs OptionB



Before

HUC 12 boundaries dissolved to constitute a larger LRseg

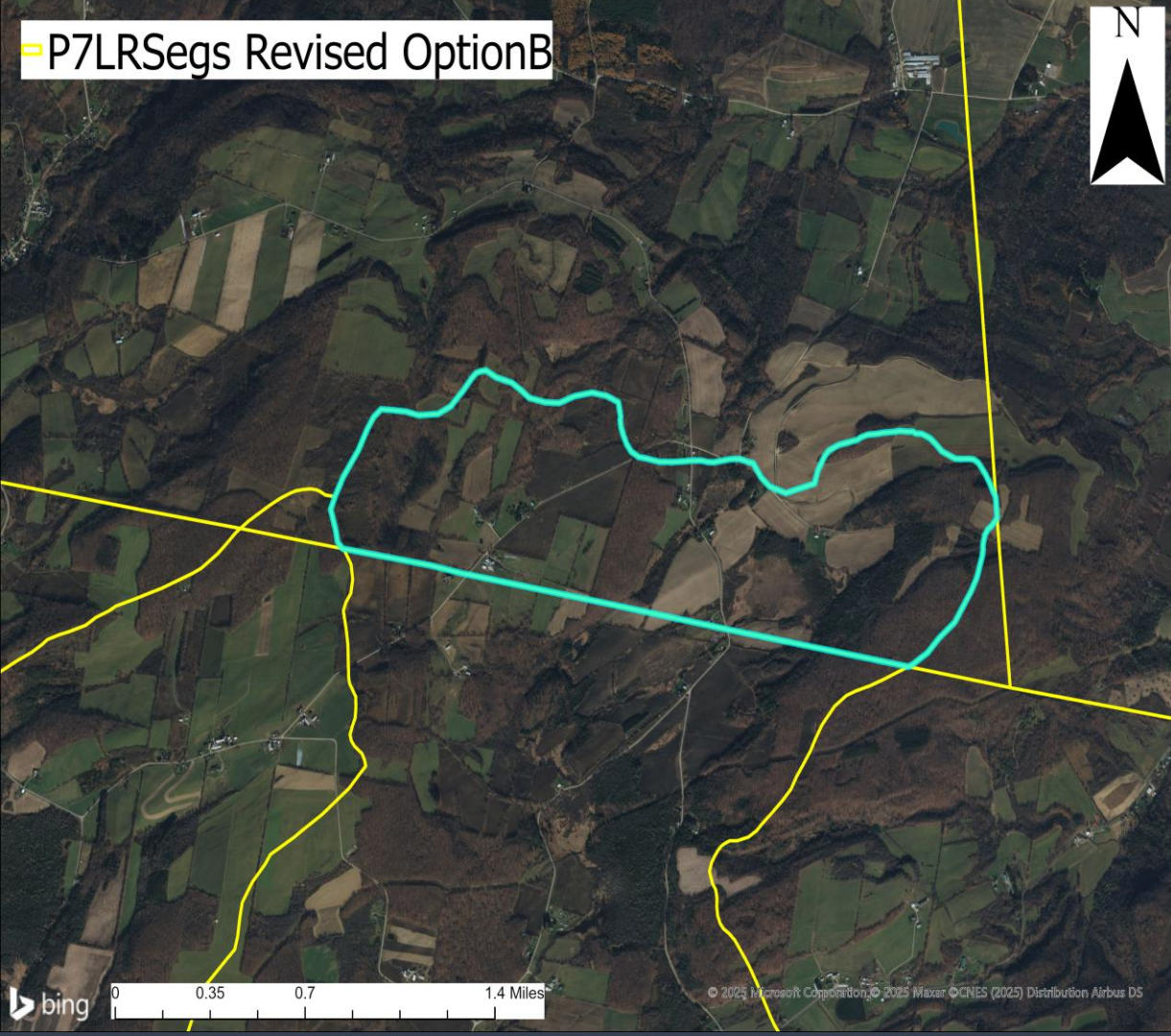
Location: Herkimer County, NY



After

Reverted back to original
HUC 12 boundaries to
reflect appropriate
allocation

Location: Herkimer County, NY

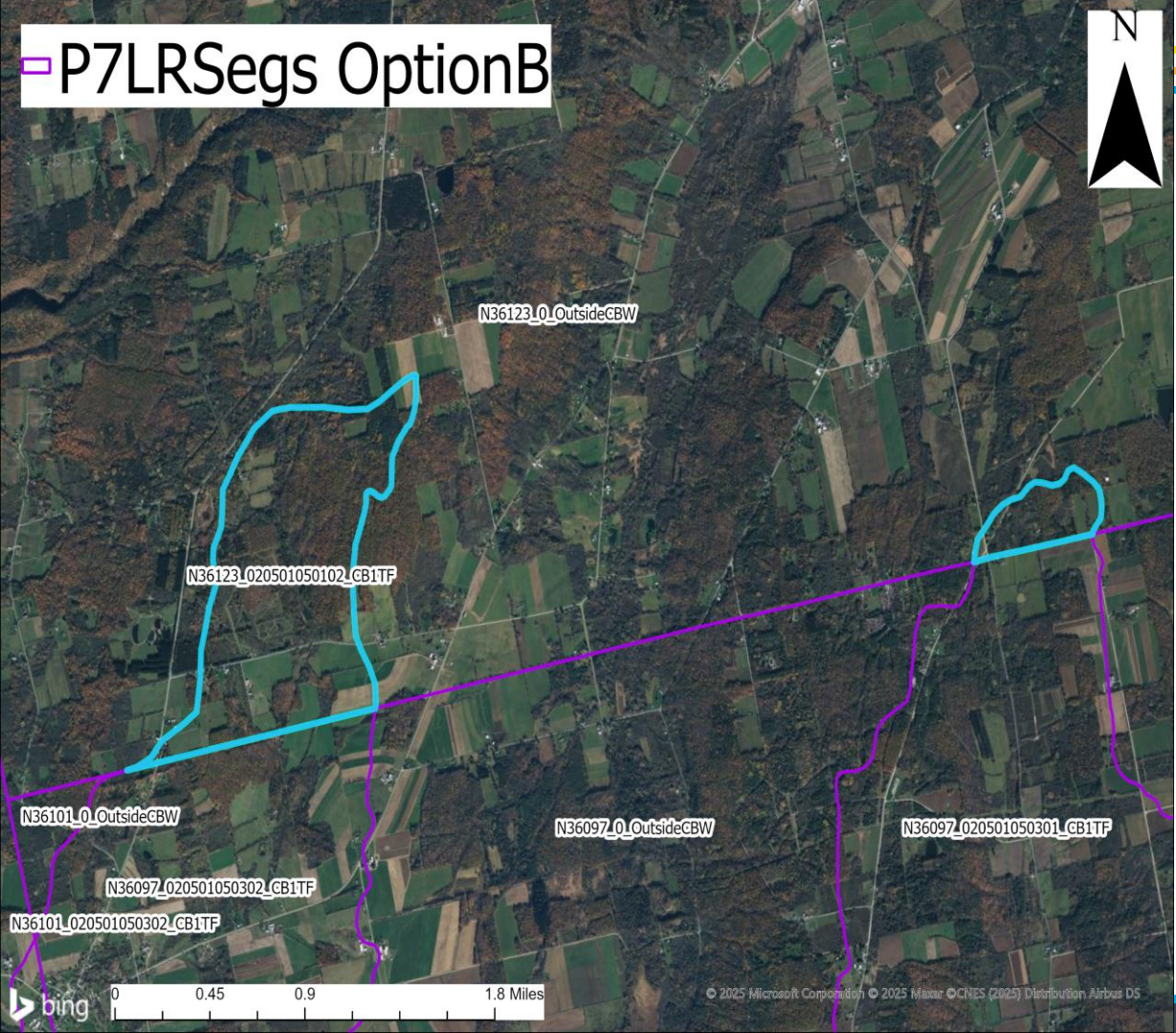


□ P7LRSegs OptionB



Before

HUC 12 boundaries
dissolved to constitute a
larger LRseg

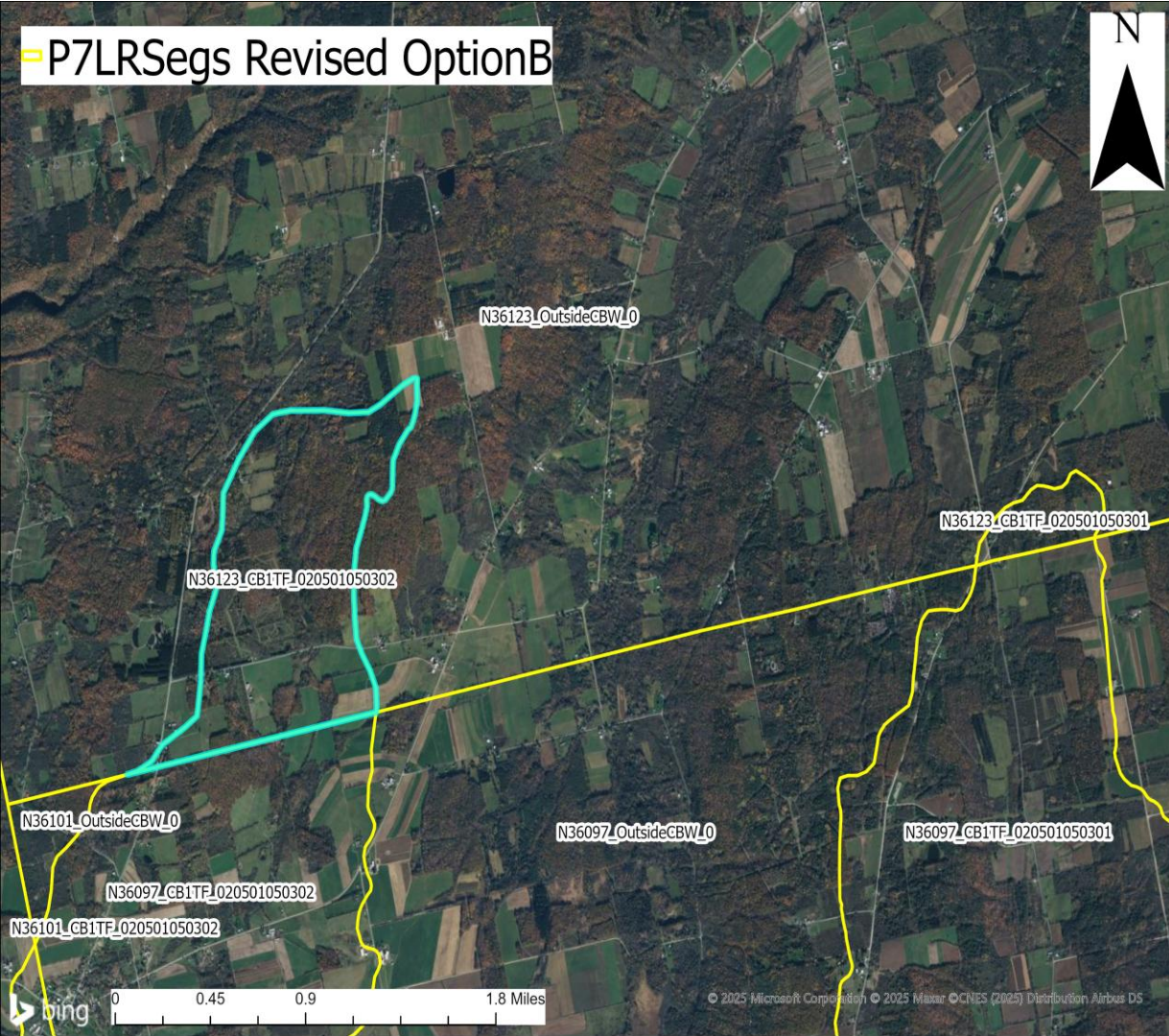


Location: Yates County, NY



After

Reverted back to original
HUC 12 boundaries to
reflect appropriate
allocation



Location: Yates County, NY

Revisions – Align with Updated CBW

- Adjusted segmentshed boundry to align with the authoritative Chesapeake Bay watershed boundary approved in 2023.
 - This added 19 Land-River Segments (compared to the original Option B) since the authoritative watershed boundary crosses county boundaries more frequently compared with P6.
 - 8 in WV, 6 in VA, 2 in NY, 2 in PA, 1 in DE

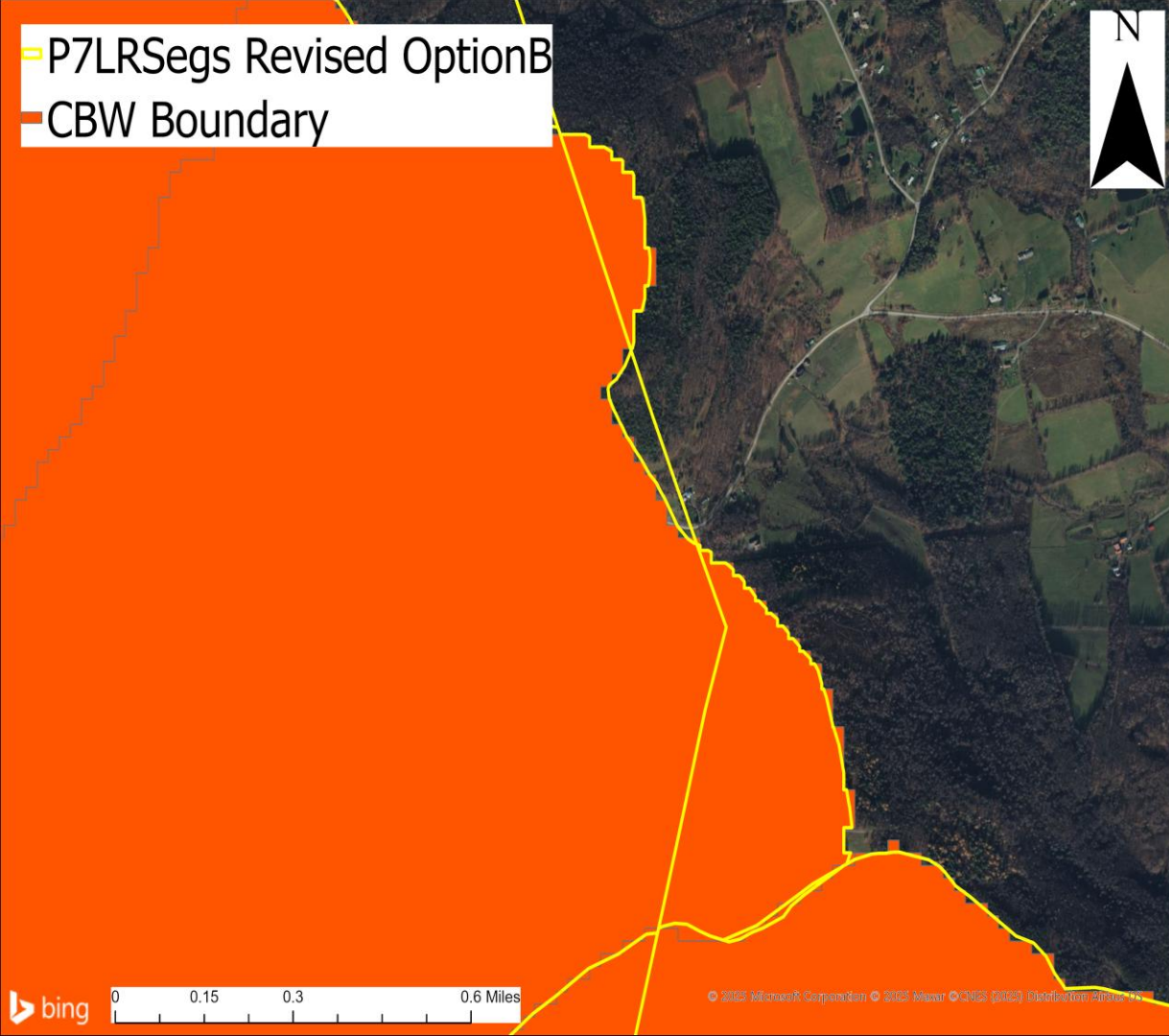
- P7LRSegs OptionB
- CBW Boundary



Before

Portion of the CB watershed not included in P6 segmentshed boundaries

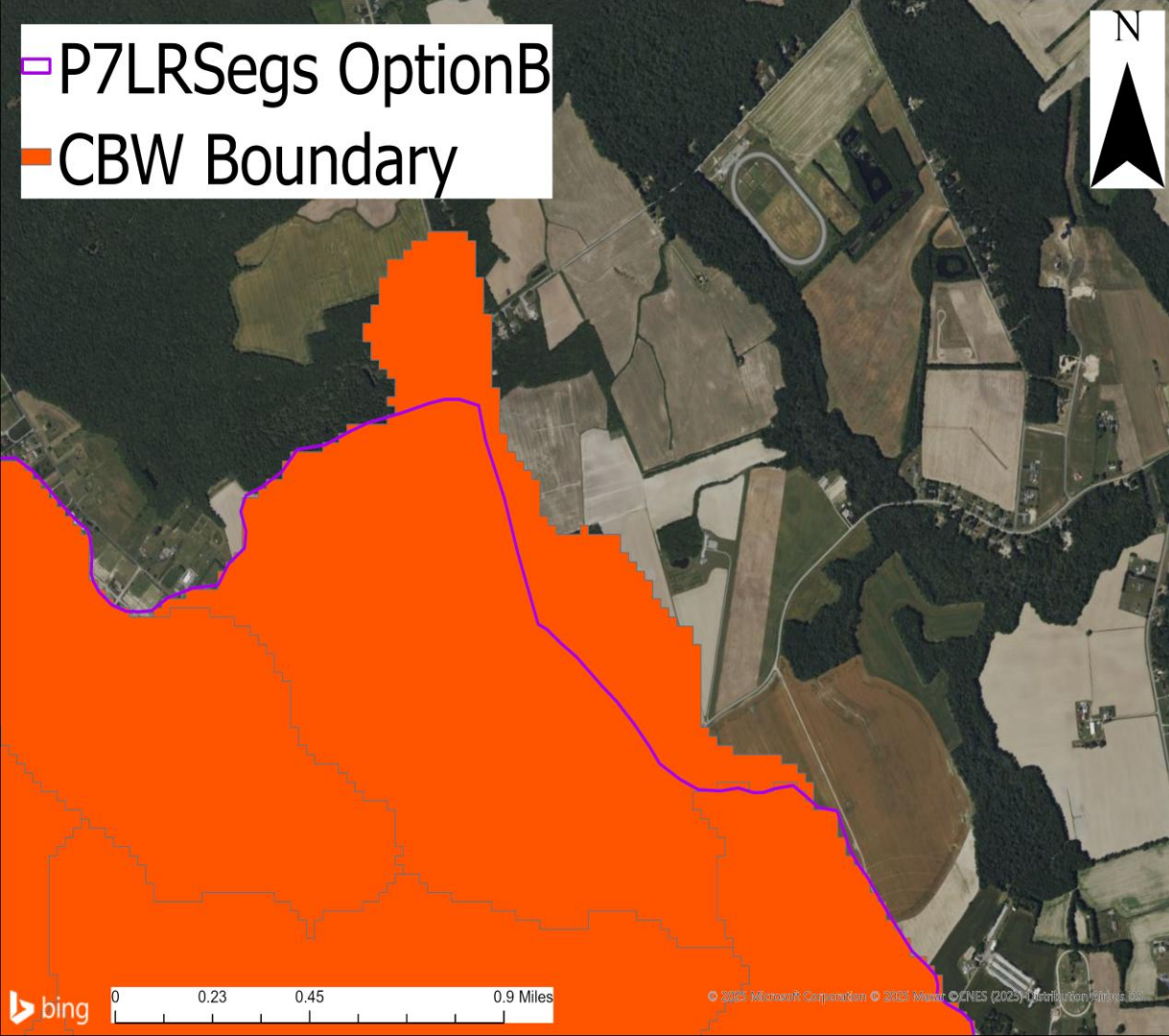
Location: Schoharie County, NY



After

LRseg added to reflect
authoritative CB
watershed boundary

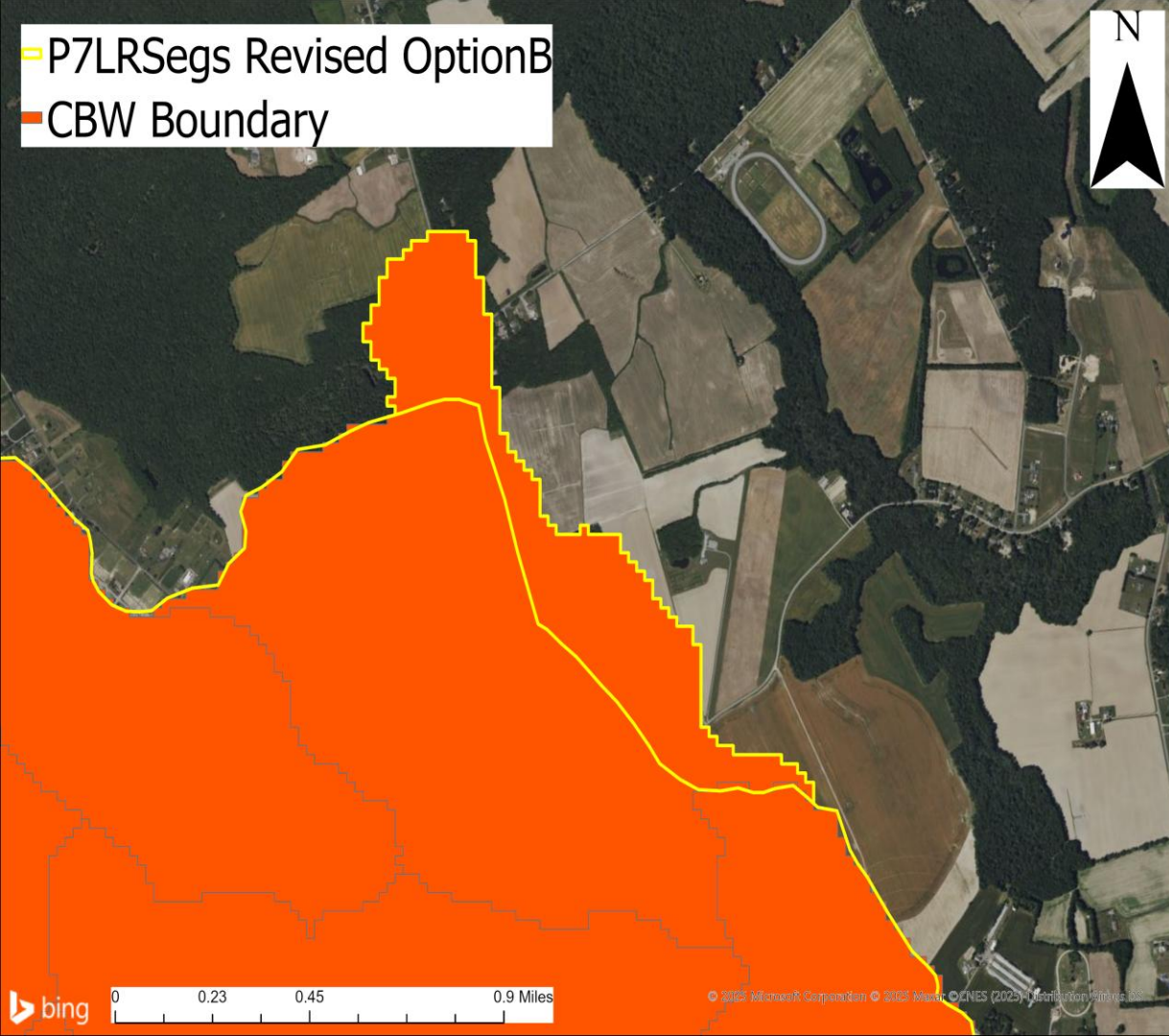
Location: Schoharie County,
NY



Before

Portion of the CB watershed not included in P6 segmentshed boundaries

Location: Kent County, DE



After

LRseg added to reflect
authoritative CB
watershed boundary

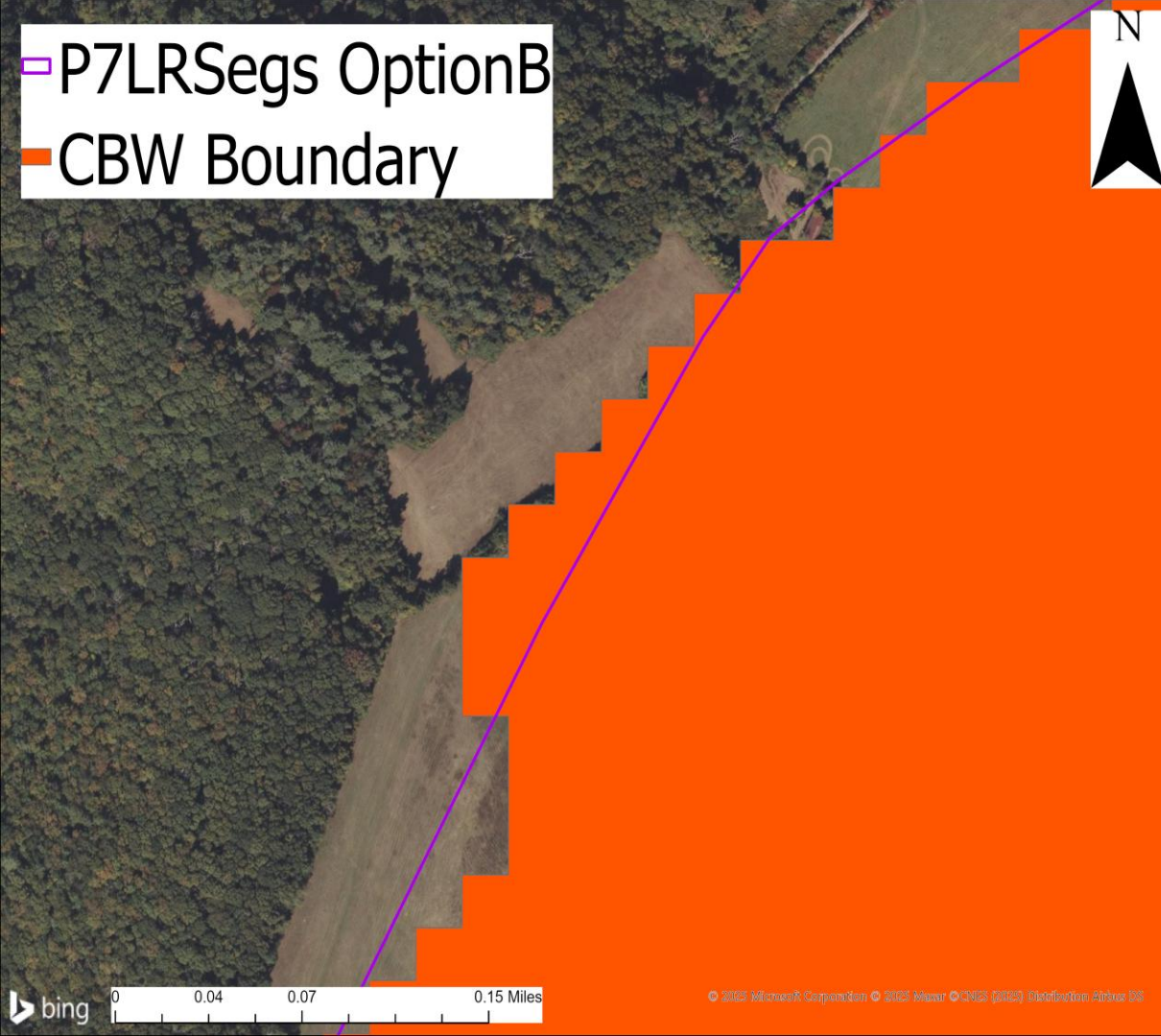
Location: Kent County, DE

Revisions

- 11 of the 19 LRsegs in the revised version are smaller than 14 acres (the smallest LRseg in the original Option B was 14 acres)
 - How do members want to treat these edge cases?

Revisions

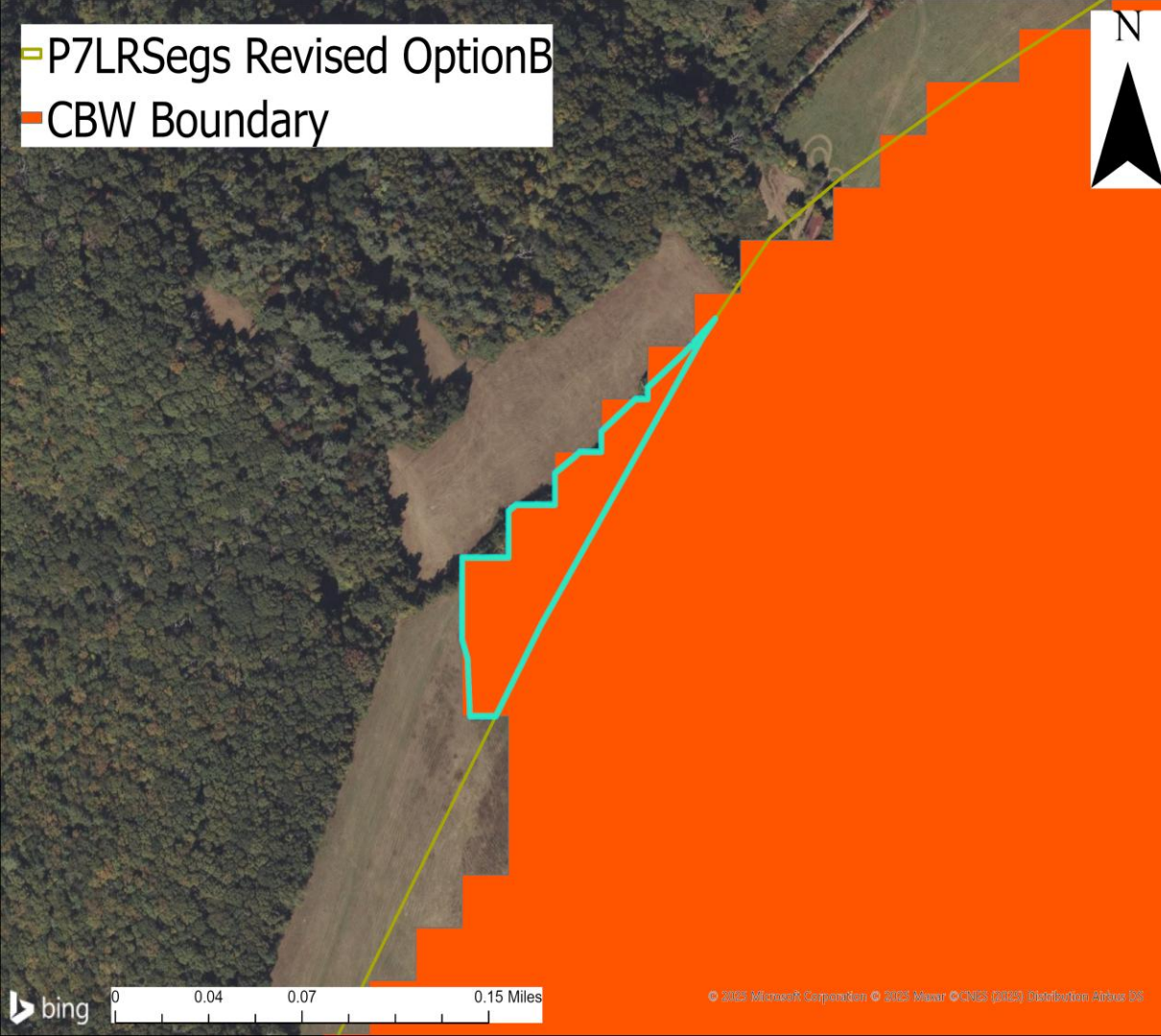
- 11 of the 19 LRsegs in the revised version are smaller than 14 acres (the smallest LRseg in the original Option B was 14 acres)
 - How do members want to treat these edge cases?



Before

Portion of the CB watershed not included in P6 segmentshed boundaries

Location: Greenbrier County, WV



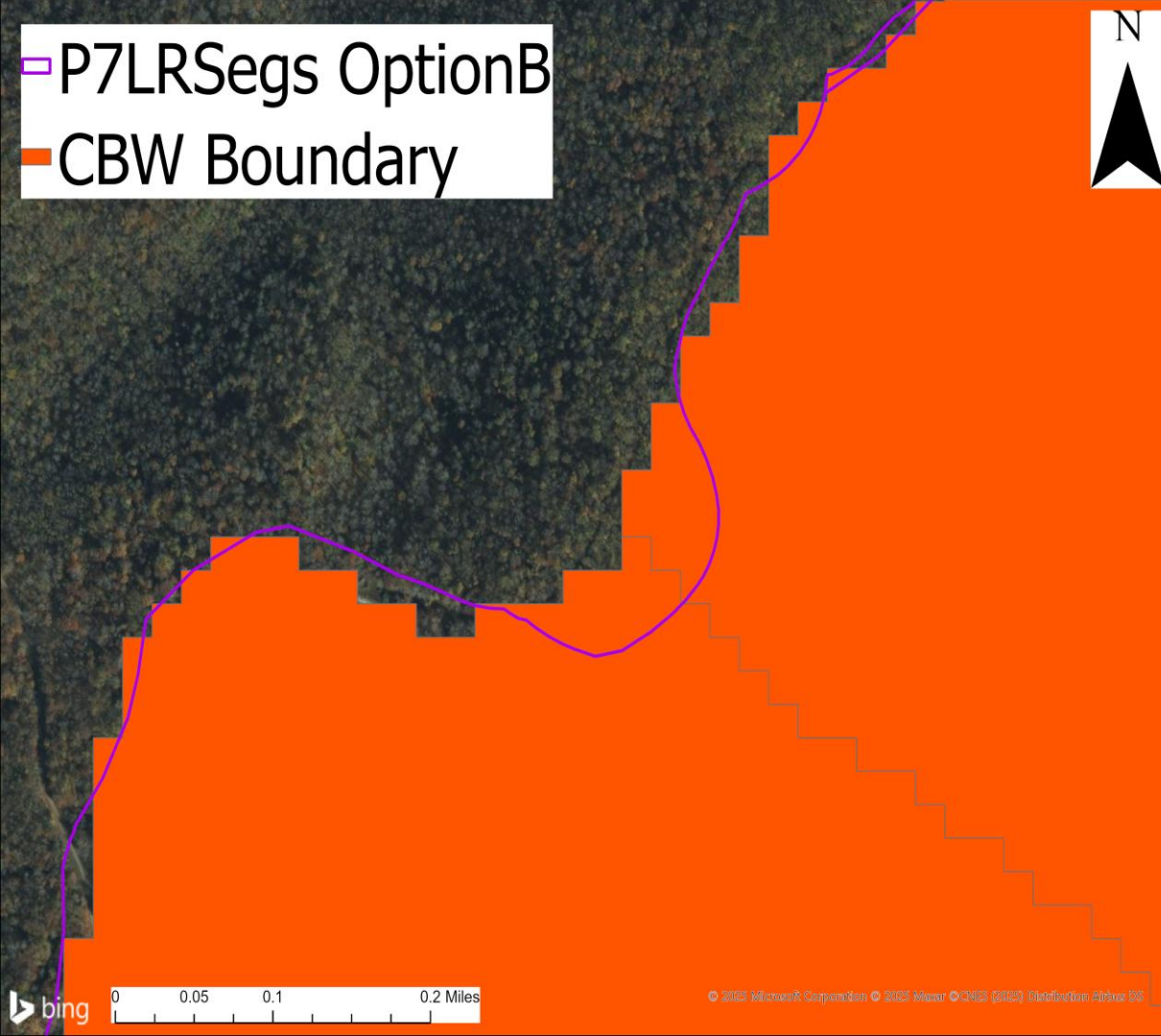
□ P7LRSegs Revised OptionB
■ CBW Boundary



After

LRseg added to reflect
authoritative CB
watershed boundary

Location: Greenbrier County,
WV



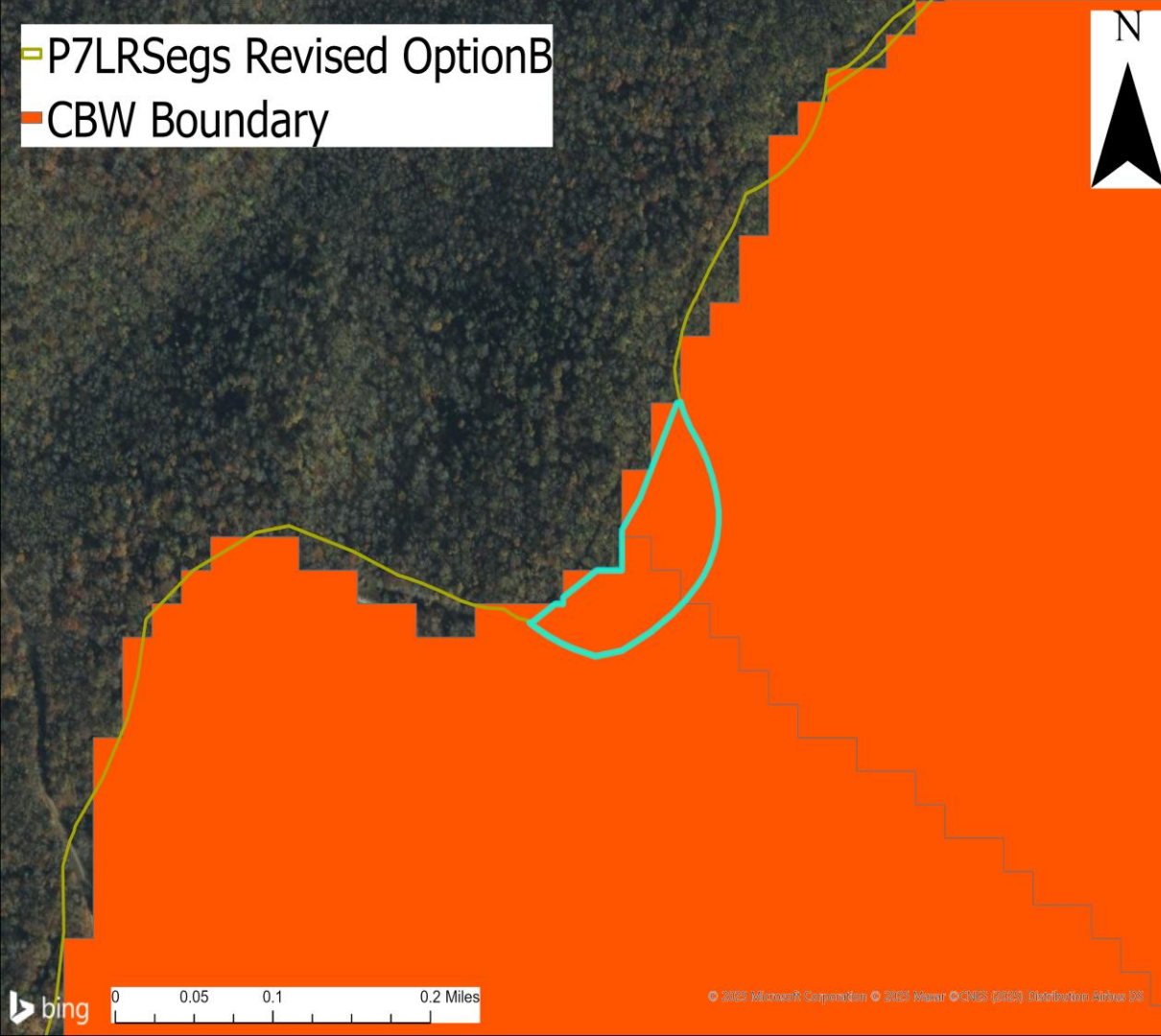
□ P7LRSegs OptionB
■ CBW Boundary



Before

Portion of the CB watershed not included in P6 segmentshed boundaries

Location: Randolph County, WV



▬ P7LRSegs Revised OptionB
▬ CBW Boundary

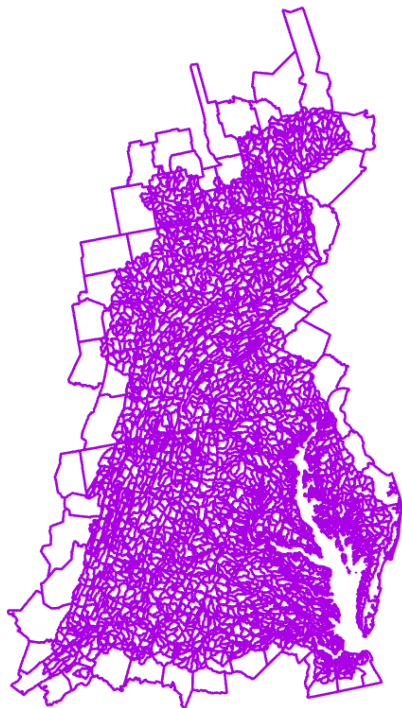


After

LRseg added to reflect
authoritative CB
watershed boundary

Location: Randolph County,
WV

Phase 7 Option B Phase 7 Option B Revised



N= 3533

[Interact with the
different layers in this
web map.](#)



N= 3563

Land-River Segments – Comparison

	Phase 7 Option B (Within the watershed)	Phase 7 Option B Revised (Within the watershed)
Total Area (acres)	41,066,833	41,067,006
# of Segments	3,533	3,563
# of Segments < 1000 Acres	371	406
# of Segments < 100 Acres	58	83
Minimum Segment Size	~14 acres	~1.72 acres
Average Segment Size	11,623 acres	11,525 acres
Median Segment Size	10,383 acres	10,311 acres



Thank you!

agunnerson@chesapeakebay.net

