

# Project update: Blue catfish movement in the tidal James River

*ICW Spring Meeting 2025*

Margaret Whitmore  
*Tidal Rivers Fisheries Biologist*

3801 John Tyler Memorial Hwy.  
Charles City, Virginia 23030

[margaret.whitmore@dwr.virginia.gov](mailto:margaret.whitmore@dwr.virginia.gov)



CONSERVE. CONNECT. PROTECT.

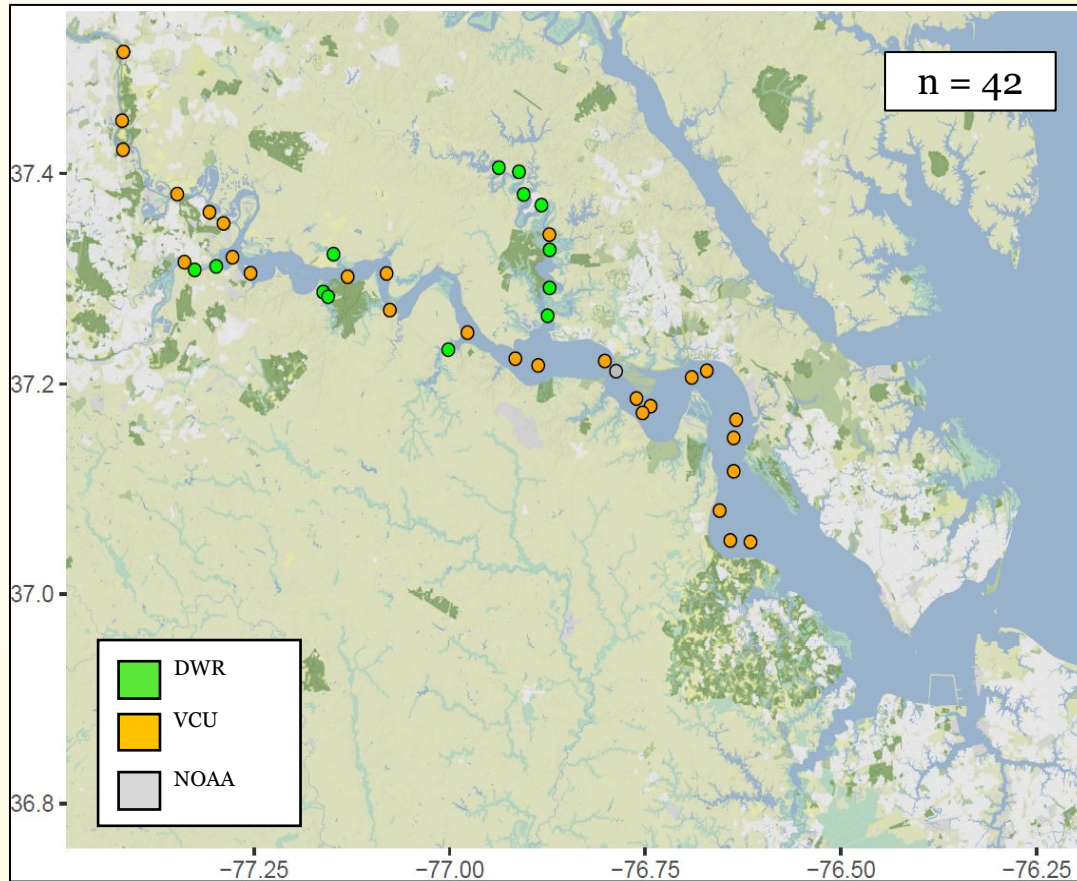
# Project overview

Tagged BCF: 90 tagged since fall 2021  
(**2021**: 40; **2022**: 10; **2023**: 30; **2024**: 10)

Included,  $n = 58$

Size range: 32 – 113 cm / 12 – 45 in

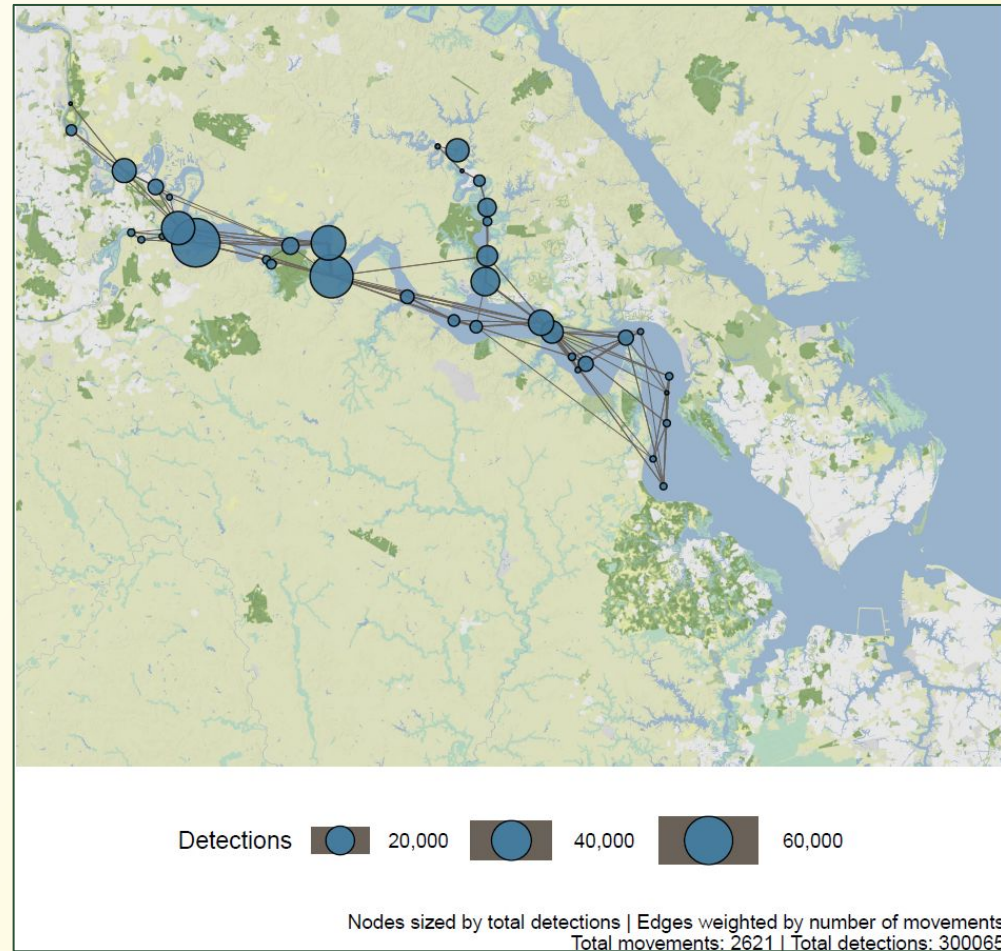
Weight range: 0.6 – 45 lbs



# Spatial networks by size class

Small size class,  $n = 19$

- Size: < 45 cm/18 in, < 2 lbs.
- Greatest distribution, most even
- Detected on 38 receivers

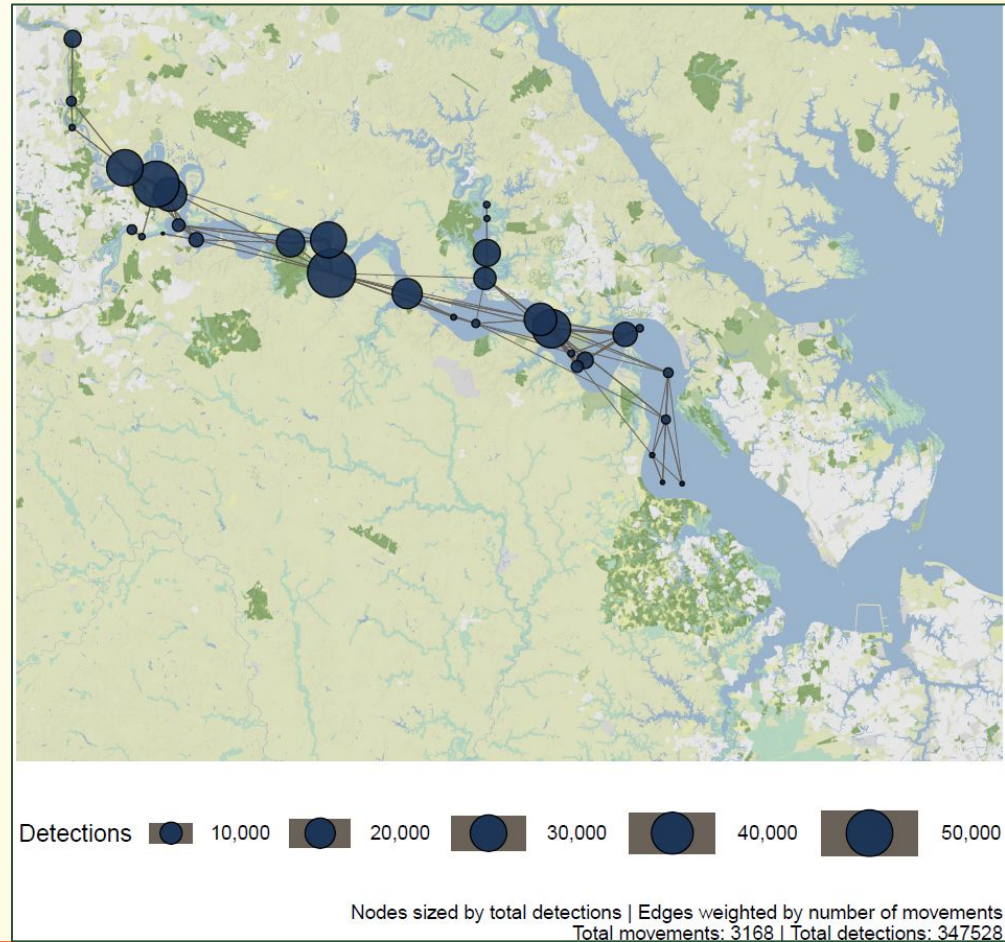




# Spatial networks by size class

Commercial size class,  $n = 30$

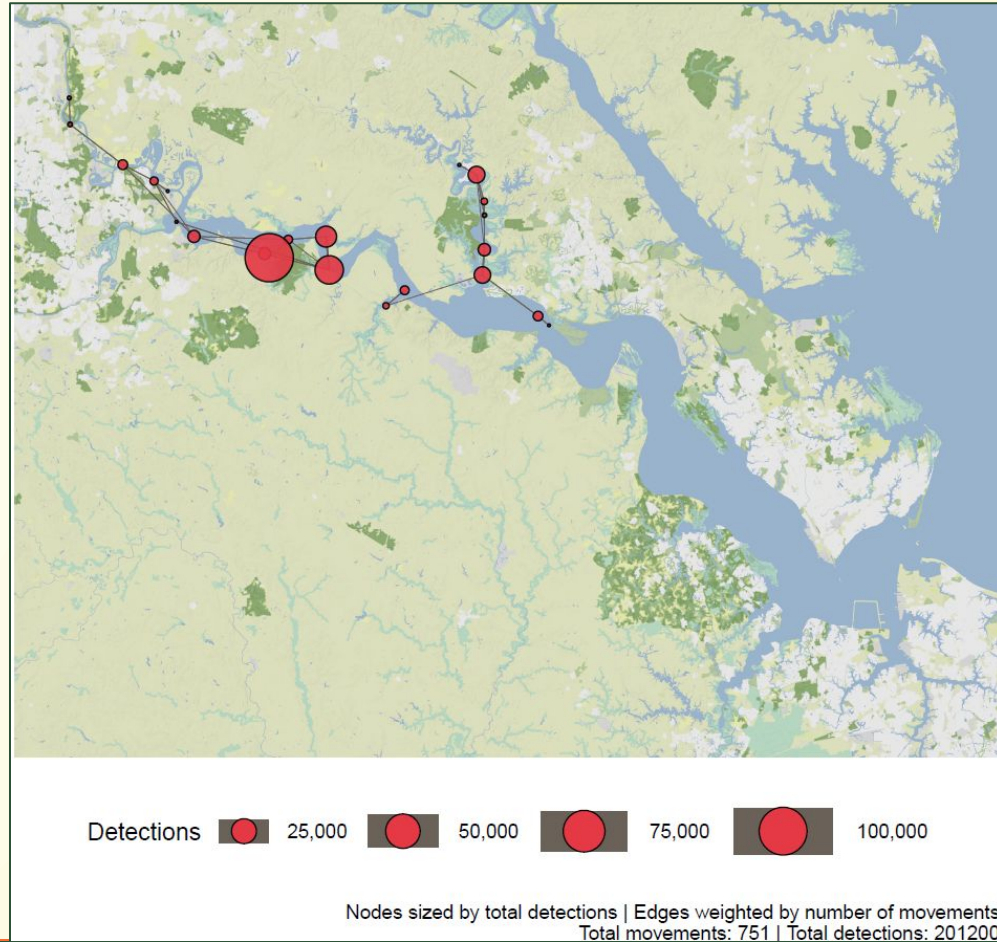
- Size: 45 - 81 cm/18 -32 inches, 2-13 lbs.
- Detected on 33 receivers
- Wide distribution, less even



# Spatial networks by size class

Trophy/ consumption warning size class,  $n = 9$

- Size: 45 - 81 cm/18 -32 inches, 14-45 lbs.
- Detected on 22 receivers
- Fewest movements, highest residency
- Smallest distribution



# Overall spatial network (Fall 2021 – Spring 2024)

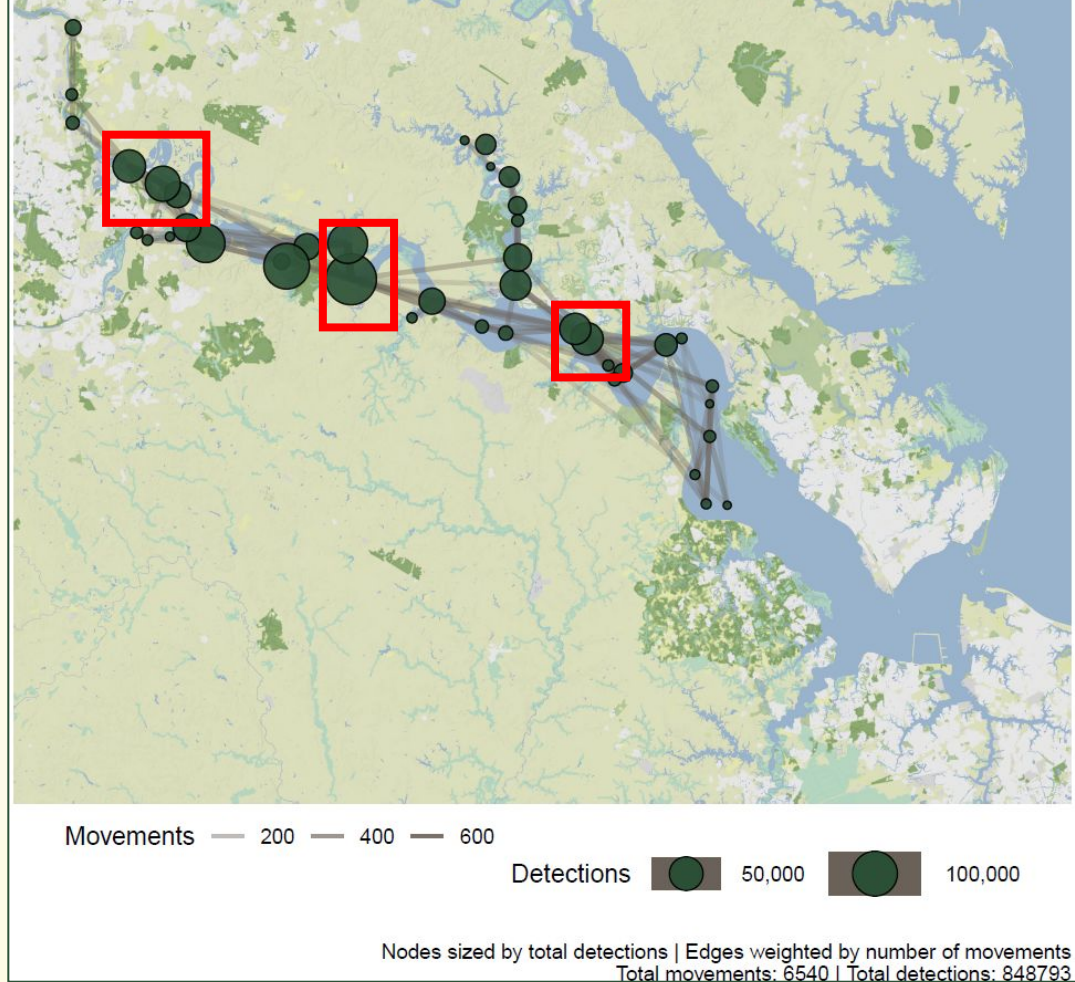
Consistent high use areas

Tributary fidelity maintained: Powell and  
Upper Chippokes creeks

Two spawning sites identified

Next steps:

- More data!
- Modelling biological and environmental drivers
- Exploring trib fidelity and aggregations





# Questions?

## Contributors

Virginia Marine Resources Commission  
(VMRC)

VCU Rice Rivers Center

NOAA North Chesapeake Bay Office

James River Association (JRA)

DWR Aquatics staff

