

Reflections on the Past to Bring us to the Future

The Tale of Two Truths

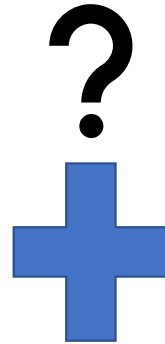
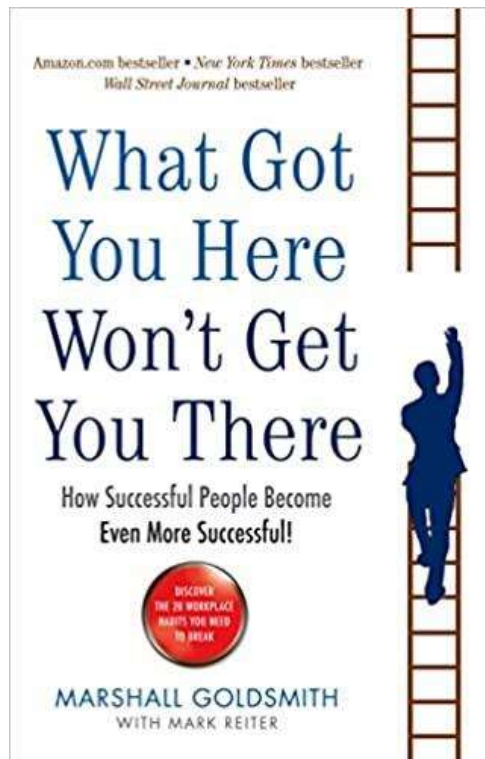
Carin Bisland, GIT 6 Vice-Chair and EPA CBPO

5/12/2023



“Those who cannot remember the past are
condemned to repeat it.” – George Santayana

Holding Two Truths at Once



“Those who cannot remember the past are condemned to repeat it.” – George Santayana

*“We celebrate the past to awaken
the future” – John F. Kennedy*

Photo By Cecil Stoughton, White House



Hold on to these three things



KEEP PERSPECTIVE



BE ADAPTIVE



VALUE RELATIONSHIPS



I. Perspective – What do you see?

Keeping Perspective

Water Quality

Agreement



Perspective



Chesapeake Bay Study – 1976-1983

“The Bay is an organic whole. If one part is damaged, all parts are affected. It is of little use to study one link in an environmental chain without relating it to the whole. If the Chesapeake Bay is to survive, it must be addressed as an entity, as a total system without duplication and without omission.”

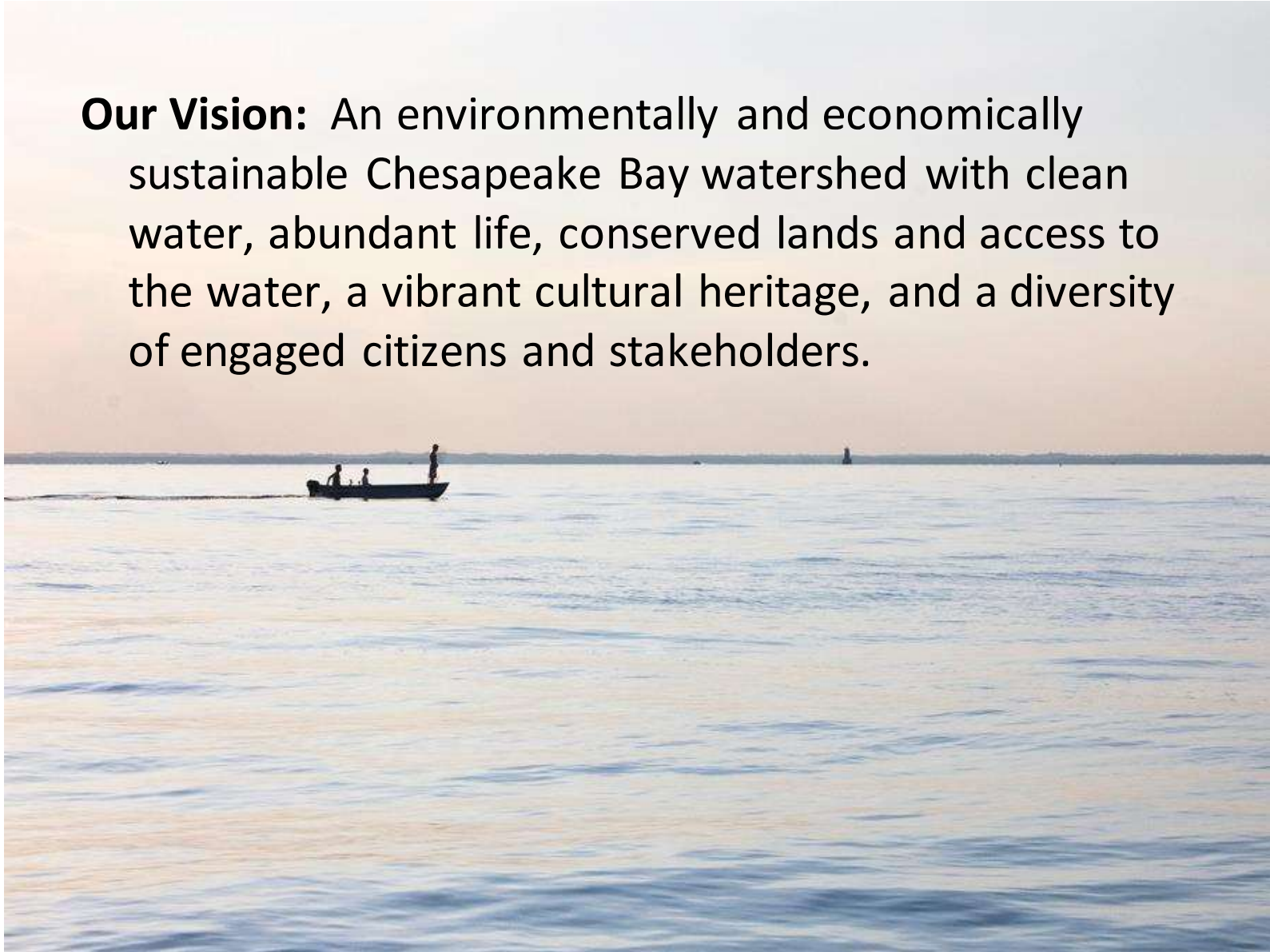


Charles McC. Mathias
United States Senator, Maryland





Our Vision: An environmentally and economically sustainable Chesapeake Bay watershed with clean water, abundant life, conserved lands and access to the water, a vibrant cultural heritage, and a diversity of engaged citizens and stakeholders.



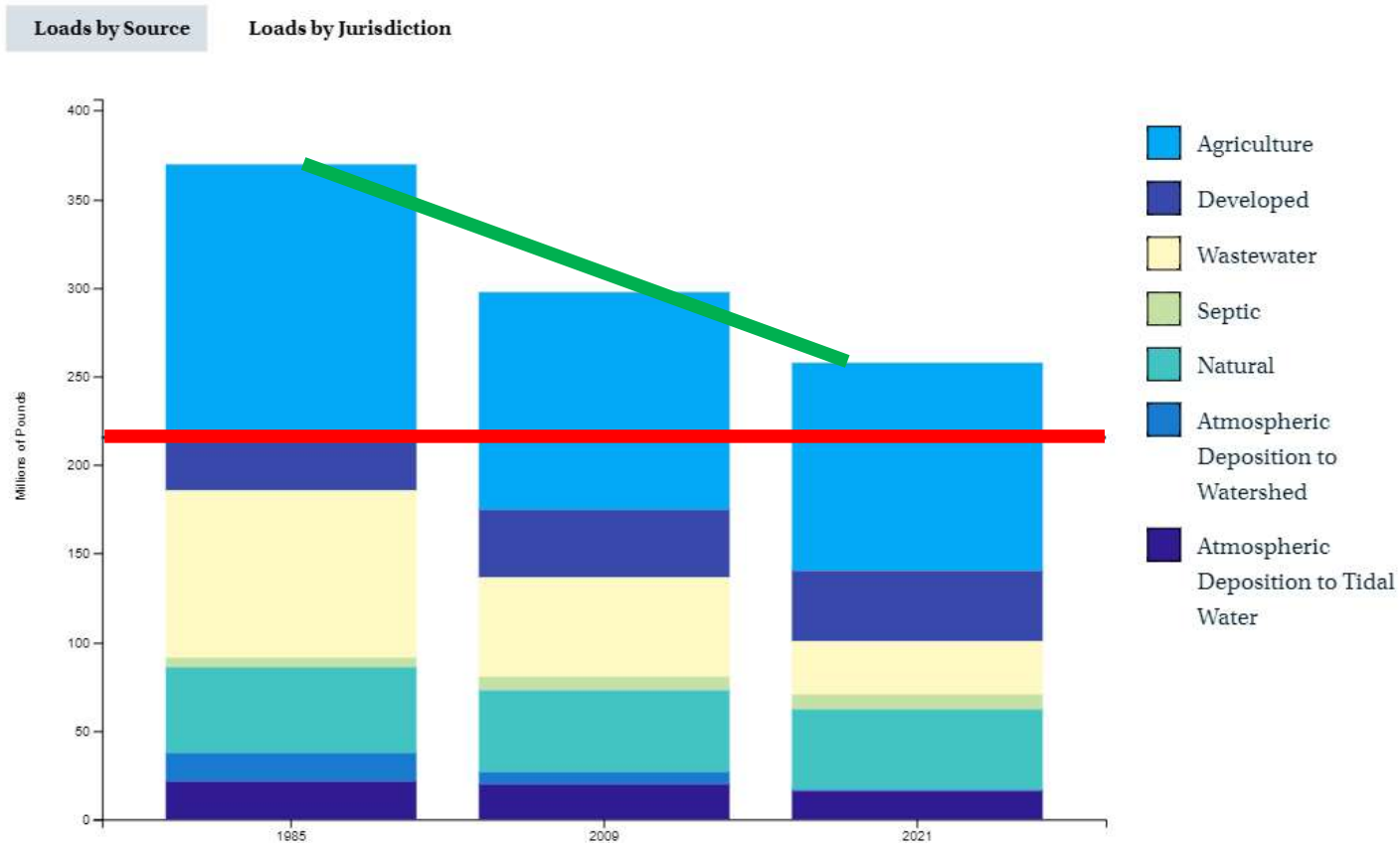
**Protection and
Restoration of the Bay is what
the Chesapeake Bay Program is
all about.**



Modeled Nitrogen Loads to the Chesapeake Bay (1985-2021) 🍷

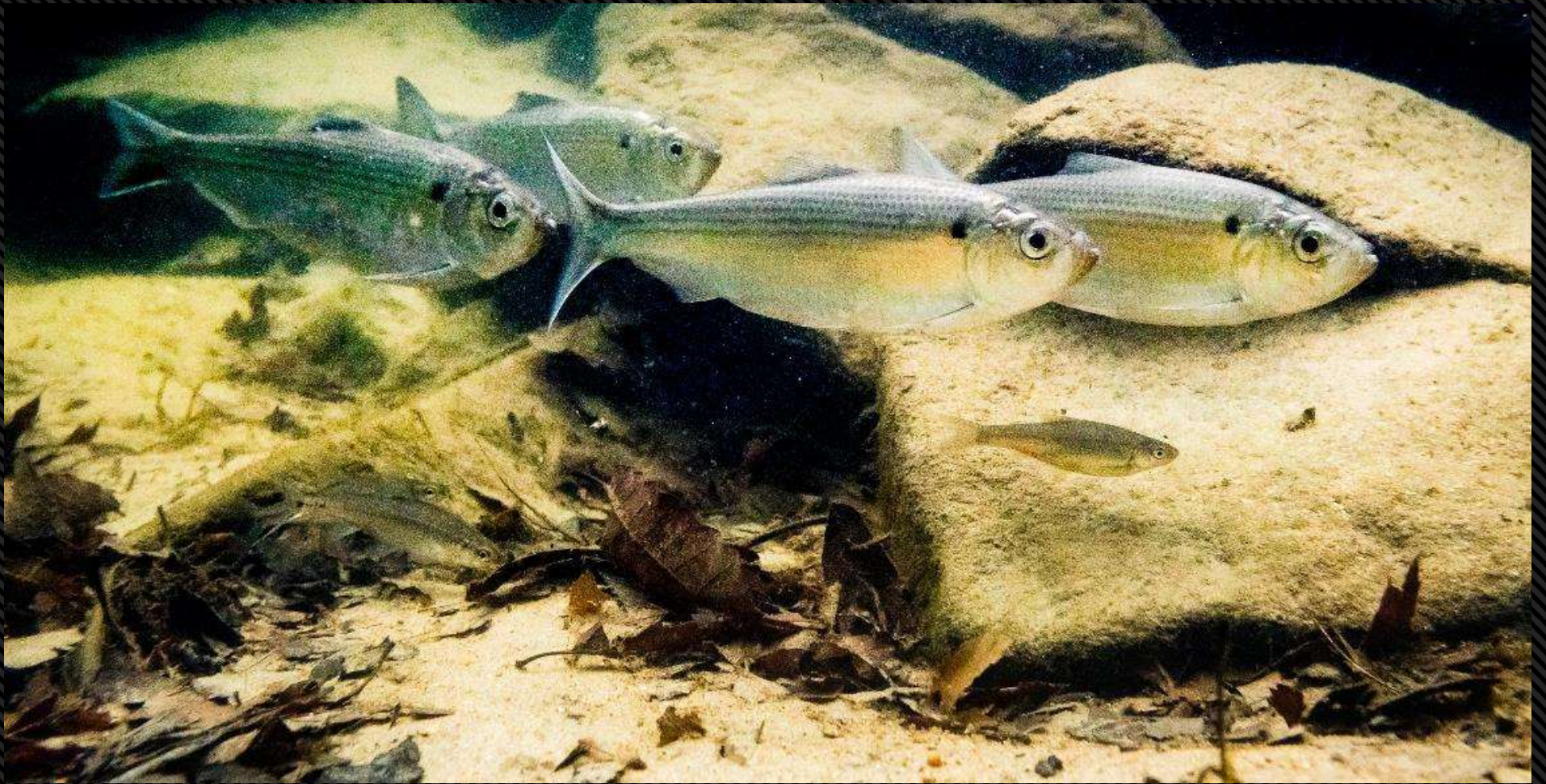
Loads simulated using CAST19 and jurisdiction-reported data on wastewater discharges. *The natural sector includes, in part, forests and wetlands which are preferable land use types with the lowest loading rates among sources.

[VIEW CHART](#) [VIEW TABLE](#)











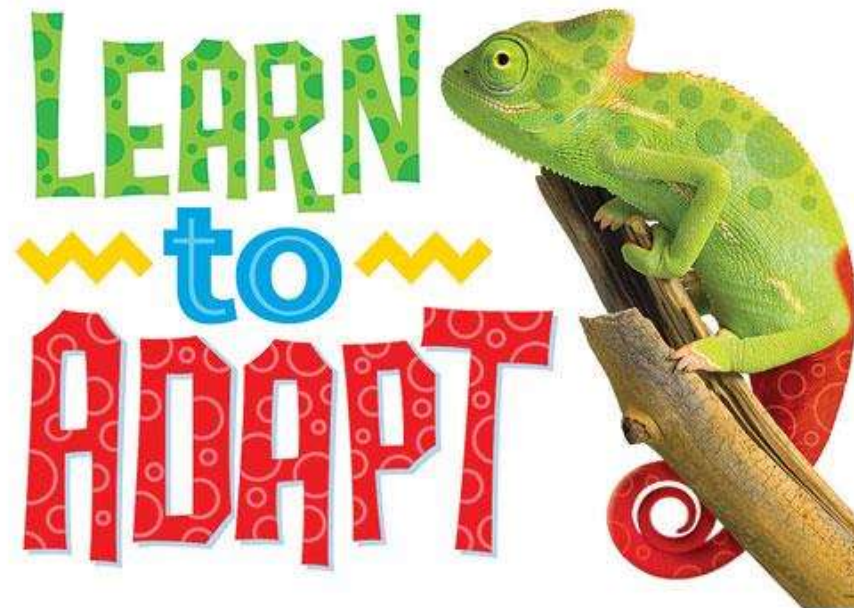






“. . . Happiness is not about making it to the peak of the mountain nor is it about climbing aimlessly around the mountain; happiness is the experience of climbing toward the peak.” Tai Ben-Shahar

II. Being Adaptive



III. Foster Strong Relationships

- *“High degrees of mutual **trust** and recognized mutual **benefits** are essential ingredients in the collective management of resources that cross state boundaries. The structure established for the management of the Chesapeake Bay and its resources recognizes the voluntary nature of the effort and seeks to capitalize on proven methods of interstate coordination and cooperation. At the same time, it recognizes that the jurisdictions have a unique history of partnership and an intertwined social and economic bond with the Bay. **Their futures are dependent on the successful recovery of the Bay ecosystem and its productivity.**”*

- 1985 First Annual Progress Report





Sprint or Marathon?



Thank you!

