



# **EPA's Climate Change Adaptation Program**

## **Presentation to STAR/Beyond 2025 - Climate Small Group Meeting**

**Joel D. Scheraga, Ph.D.  
Senior Adviser for Climate Adaptation  
Office of the Administrator / Office of Policy  
U.S. Environmental Protection Agency**

**December 12, 2023**



# EPA's Climate Change Adaptation Program: Vision

**EPA continues to fulfill its mission of protecting human health and the environment even as the climate changes and disruptive impacts increase.**

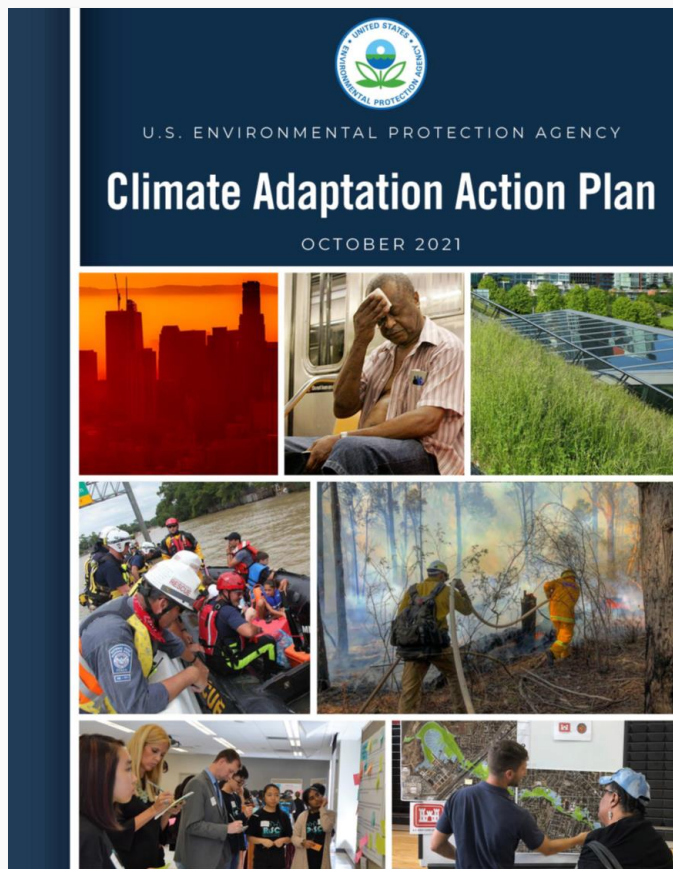
States, tribes, territories, and local governments, in **partnership** with EPA and other Federal Agencies, share responsibility for:

- Protecting human health and the environment.
- Increasing resilience and adapting to climate change in a manner that advances environmental justice.



## EPA 2022-2026 Strategic Goal

- **Goal 1: Tackle the Climate Crisis**
- **Objective 1.2:** Accelerate Resilience and Adaptation to Climate Change Impacts
- **Commitment:** To provide targeted assistance to increase the resilience of states, tribes, territories, communities, and businesses to the impacts of climate change, with a particular focus on advancing environmental justice.



1. Integrate climate adaptation into EPA programs, policies, rulemaking processes, and enforcement activities.
2. Consult and partner with Tribes, states, territories, local governments, environmental justice organizations, community groups, businesses, and other federal agencies to strengthen adaptive capacity and increase the resilience of the nation, with a particular focus on advancing environmental justice.
3. Implement measures to protect the Agency's workforce, facilities, critical infrastructure, supply chains, and procurement processes from the risks posed by climate change.
4. Measure and evaluate performance.
5. Identify and address climate adaptation science needs.

# 20 Climate Adaptation Implementation Plans



Implementation Plans contain annual Priority Actions each office will take to address the Agency's Strategic Goals



# How Do We Do It?



## Building Adaptive Capacity

EPA is committed to building and strengthening the adaptive capacity of its own staff and our partners:

- **Climate Literacy**: Increasing awareness of ways climate change may affect their ability to implement effective programs
  - **Tools**: Providing necessary data, information and tools
  - **Technical assistance**: Working with states, tribes, and communities to help develop and implement locally-led adaptation plans
  - **Financial incentives**: Supporting climate-resilient investments in communities across the country
- ✓ **The 2022 Infrastructure Investment and Jobs Act (IIJA) and the 2022 Inflation Reduction Act (IRA) provide historic levels of financial support.**





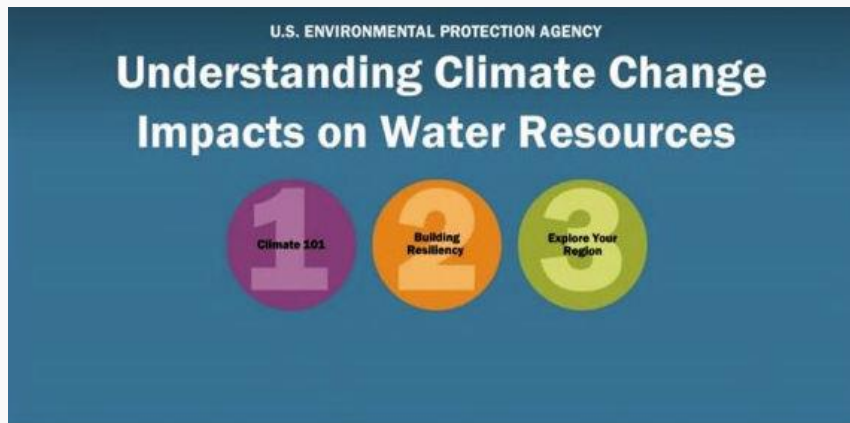
## Climate Literacy Initiative

- EPA is building the climate literacy of its staff and partners across the nation.
- EPA is exploring a variety of mechanisms for increasing climate literacy
  - ✓ Pillar 1: Training to build foundational knowledge
    - ❖ Required of all Program and Regional Offices & all new EPA employees
  - ✓ Pillar 2: Community of Practice & peer-to-peer sharing of experiences
    - ❖ *Climate Conversations* webinar series launched in November 2023.





# Training



(Produced with the assistance of EPA's  
Local Government Advisory Committee)



## Financial Incentives

***May 2021 directive from Administrator Michael Regan to modernize all EPA financial assistance programs to encourage climate-resilient investments across the nation.***



## Financial Incentives

### February 2023 Memorandum from Deputy Administrator and Senior Climate Adaptation Official.

- “Incorporating Climate Adaptation Criteria into Applicable Financial Assistance Agreements”
- Called on all the Programs and Regions to integrate climate adaptation into all relevant financial assistance agreements, over time.
- **Immediate focus is on IIJA (also known as the Bipartisan Infrastructure Law or BIL) and IRA** – to ensure that the outcomes of investments made with those funds are resilient to the impacts of climate change.
- **Established Resilient Infrastructure Subgroup on Climate (RISC) to provide technical support to Program and Regional Offices.**



## Financial Incentives: Examples of Progress

- **\$50 billion from BIL**: EPA's Clean Water and Drinking Water State Revolving Fund Programs are providing low-cost financing for water quality and infrastructure projects, including those that help address drought, wildfire, water conservation, energy efficiency, and more.
- **\$2 billion from BIL**: EPA's National Estuary Program and Geographic Program grants can support green infrastructure projects that help address extreme heat.
- **\$3 billion**: **Environmental and Climate Justice Grants** (\$3 billion)



## **Embedding Climate Adaptation into Rulemaking Processes**

- EPA established a new Resilient Rules Subgroup to the Cross-EPA Work Group on Climate Change Adaptation.
- The subgroup is tasked with Programs to integrate climate adaptation into rulemaking processes, including regulations, NEPA, and permitting.



## Progress Embedding Climate Adaptation into Rulemaking Processes

- EPA has proposed the following three actions that take climate risks into consideration:
  - ✓ CWA - Facility Response Plan (originally named Hazardous Substance Worst Case Discharge Planning) includes climate change vulnerability as a consideration ([Proposed in March 2022](#))
  - ✓ CAA - Risk Management Program Safer Communities by Chemical Accident Prevention includes taking climate change risk into account ([Proposed in August 2022](#))
  - ✓ RCRA - Coal Combustion Residuals from Electric Utilities including legacy CCR surface impoundments, CCR management units, and CCR landfills consider climate change impacts on facilities ([Proposed in May 2023](#))



## Embedding Climate Adaptation into Enforcement

- The Office of Enforcement and Compliance Assistance has established EPA's Climate Enforcement and Compliance Strategy.
- Directs all EPA enforcement and compliance offices to address climate change, whenever appropriate, in every matter within their jurisdiction.
  - ✓ Example: Consent decree with Washington, DC





# Protecting EPA's Workforce, Facilities, and Supply Chains

## ➤ Protecting EPA's supply chains:

- ✓ EPA is implementing its Supply Chain Risk Management Plan.
- ✓ Includes actions to protect against the risks posed by climate change.

## ➤ Protecting EPA facilities:

- ✓ Climate adaptation is now an integral component of EPA's site planning, facility support and operations.
- ✓ Climate resilience assessments have been conducted at key facilities to identify vulnerabilities and opportunities for climate readiness and adaptation.
- ✓ A variety of management strategies are already being implemented to ensure buildings are safe for the workforce, resilient, and sustainable.



# The Environmental Justice Thriving Communities Technical Assistance Centers Program (TCTACs)

- 17 Environmental Justice Thriving Communities Technical Assistance Centers (EJ TCTACs) are being established in partnership with DOE.
- The TCTACs will receive a total of \$177 million to help underserved and overburdened communities across the country.
- One TCTAC will be focused exclusively on supporting Tribes.
- These centers will provide training and other assistance to build capacity for navigating federal grant application systems, writing strong grant proposals, and effectively managing grant funding.



## Providing Useful Climate Information to Communities Across the Nation

- EPA's Office of Research and Development has established a new Integrated Climate Sciences Division (ICSD).
- ICSD's Goals:
  - ✓ To meet the science needs of every Program and Regional Office as they implement their Climate Adaptation Implementation Plans.
  - ✓ To provide useful and usable climate information and services to communities in every region of the country.
- A partnership is being established with NOAA's Regional Climate Service Centers.



## Measuring and Evaluating Performance

- EPA developed a Climate Adaptation Measures Program (CAMP) to track progress being made by every Program and Regional Office with their annual Priority Actions.
- Agency-wide progress is reported to the Deputy Administrator every quarter.
- Performance is assessed to determine:
  - ✓ What is working and why
  - ✓ What isn't working and why not
- Program evaluation helps to improve the effectiveness of the program.



**“I skate to where the puck is going to be,  
not where it has been.”**

**- Hockey great, Wayne Gretzky**



## **Contact Information**

**Dr. Joel D. Scheraga**

**Phone: 202-564-3385**

**Email: [Scheraga.Joel@epa.gov](mailto:Scheraga.Joel@epa.gov)**