



Urban Stormwater Management Updates for the Phase 7 Chesapeake Bay Watershed Model

Municipal Separate Storm Sewer System (MS4), Combined Sewer Overflow (CSO), and Combined Sewer System (CSS) Updates

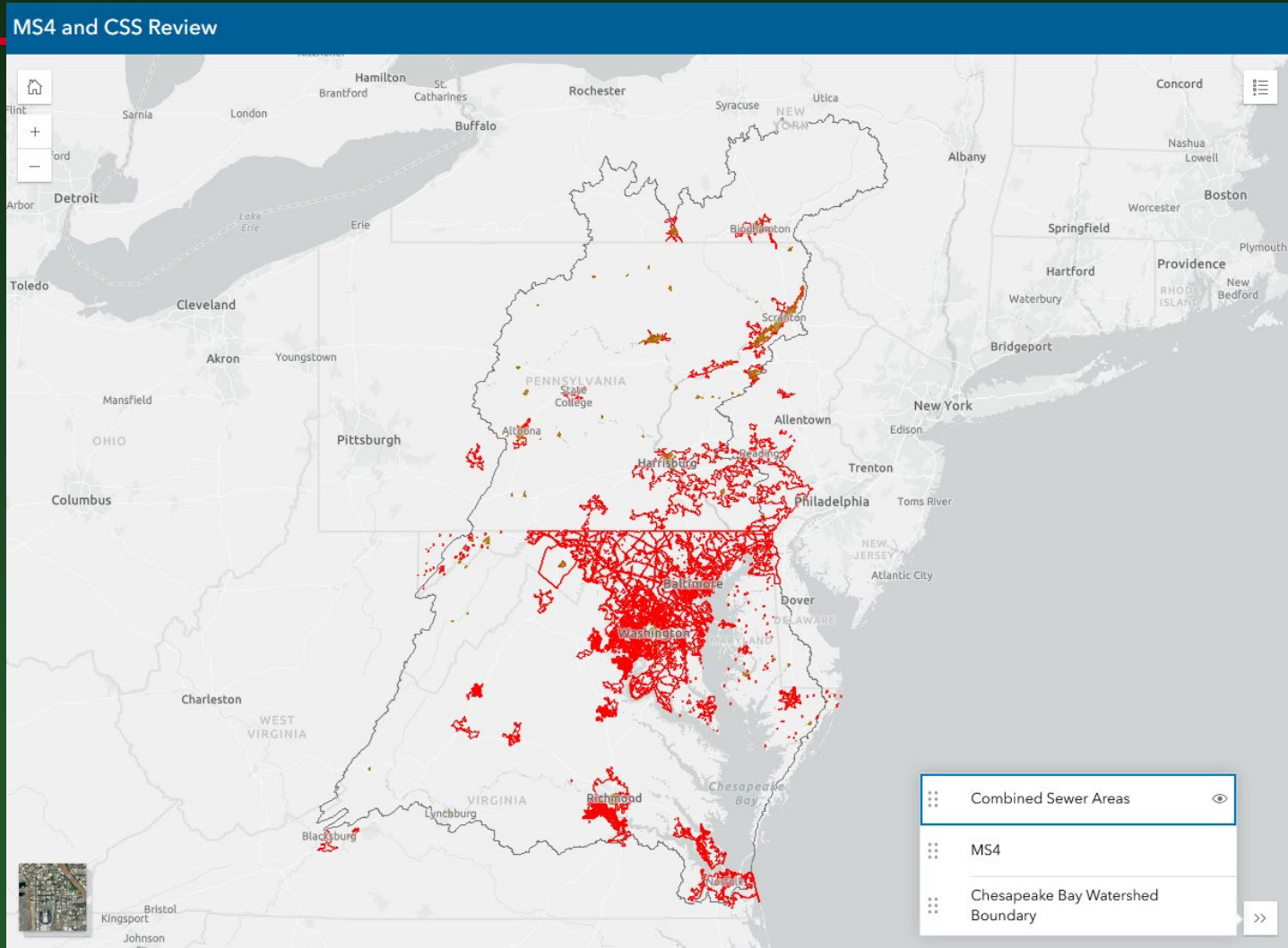
Rebecca K. Ransom, EI
Lower Mississippi-Gulf Water Science Center

Who am I?



Introduction: Rebecca Ransom is a hydrologist with the USGS where she works on a variety of State, local, and national projects. She received her Bachelor of Science in Environmental Resources Engineering at California State Polytechnic University of Humboldt and her Master of Civil Engineering at Tennessee State University. Her research interests and expertise include environmental GIS, source water assessment, geologic mapping, automated workflows, contaminants, environmental chemistry, modeling, and aquaculture.

Baseline: MS4 and CSS Review

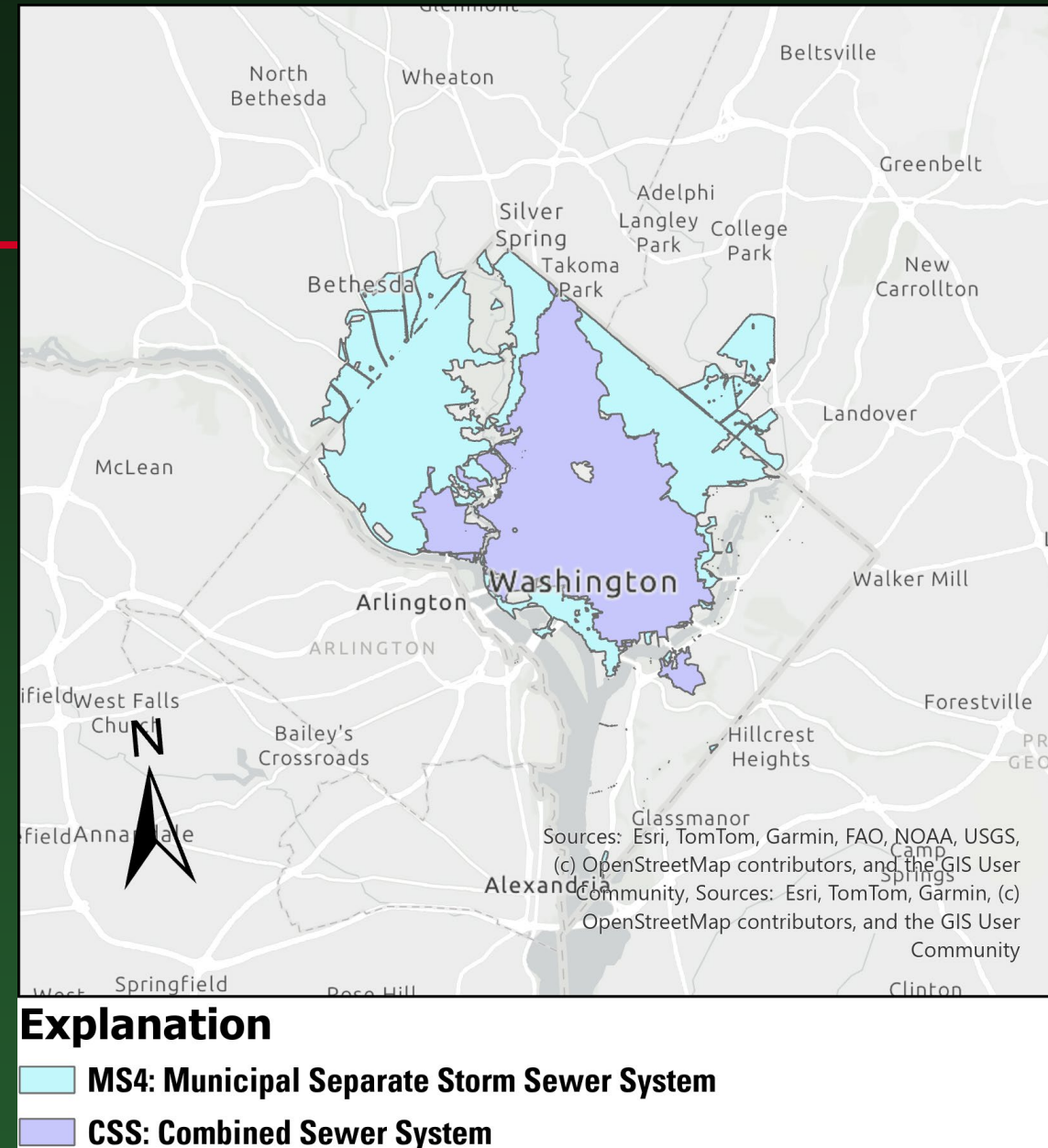


State Updates

State	2025 Updates
District of Columbia	USGS should use the existing boundaries for Phase 7, and the boundary for DC should also be used as a demarcation of the areas between Maryland and DC
Delaware	We were given updates in the form of MS4 lists, but no GIS layers.
Maryland	MS4 boundary updates expected soon.
New York	No Changes, but changes expected sometime in the future with no timeline given.
Pennsylvania	Data Portal Shared: https://newdata-padep-1.opendata.arcgis.com/datasets/565615e7cc22438884556fdc13dc3cae_0/explore
Virginia	Planned updated geospatial data available early 2026. Awaiting confirmation on CSS areas.
West Virginia	No response

District of Columbia

- Use the existing boundaries for Phase 7
- The boundary for DC should be used as a demarcation of the areas between Maryland and DC



Delaware

- No confirmation on whether Seaford is still covered by CSO permitting.
- The only known MS4 in the Chesapeake Bay watershed in Delaware is associated with the Cecil County MS4 area of Maryland.
- No updated GIS data provided



Explanation

 **CSS: Combined Sewer System**

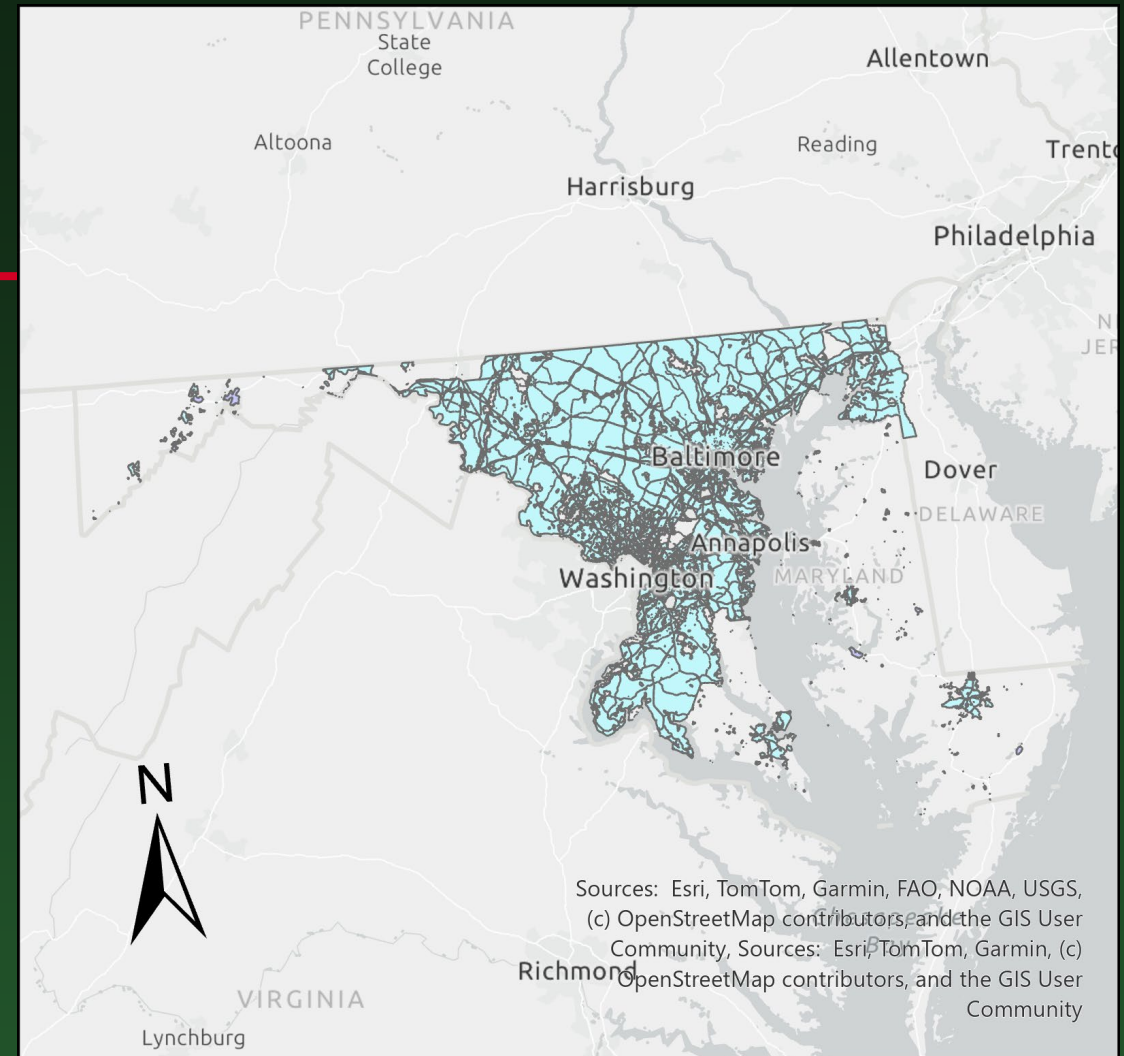
 **MS4: Municipal Separate Storm Sewer System**

Delaware Continued:

- Some of the boundaries used previously came from EPA and Census Data for all urbanized boundaries designating MS4 areas.
- Potential MS4 areas:
 - Dover may have some land in the watershed, and all of Dover is covered by a MS4
 - Middletown has 1100 acres in the watershed
 - There is a public hearing for Tier II permits in Sussex county for Seaford, Laurel, Smyrna, Camden, and Camden/Wyoming which may be in the watershed
 - University of Delaware has its own MS4 permit.
 - Newark also has an MS4 permit
 - DelDOT has its own MS4 permit in Kent county along the corridor of Route 13

Maryland

- Some MS4 boundary updates expected in the next week or two.
- Potential CSS boundary updates



Explanation

- MS4: Municipal Separate Storm Sewer System
- CSS: Combined Sewer System

New York

- No current updates



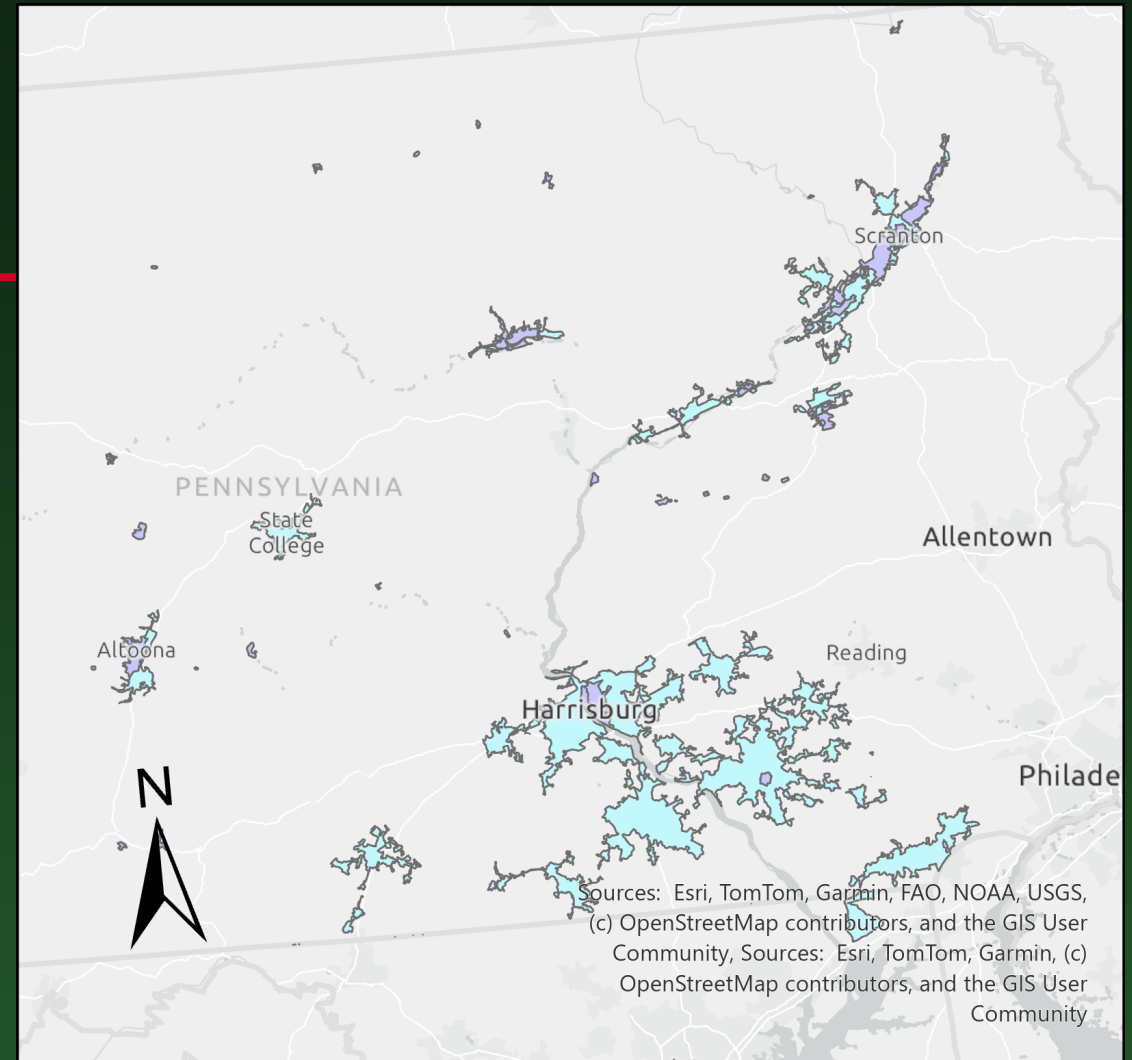
Explanation

 **MS4: Municipal Separate Storm Sewer System**

 **CSS: Combined Sewer System**

Pennsylvania

- Update Shared via Portal:
https://newdata-padep-1.opendata.arcgis.com/datasets/565615e7cc22438884556fdc13dc3cae_0/explore
- Appears many areas previously permitted as CSS/CSOs have been upgraded to MS4.

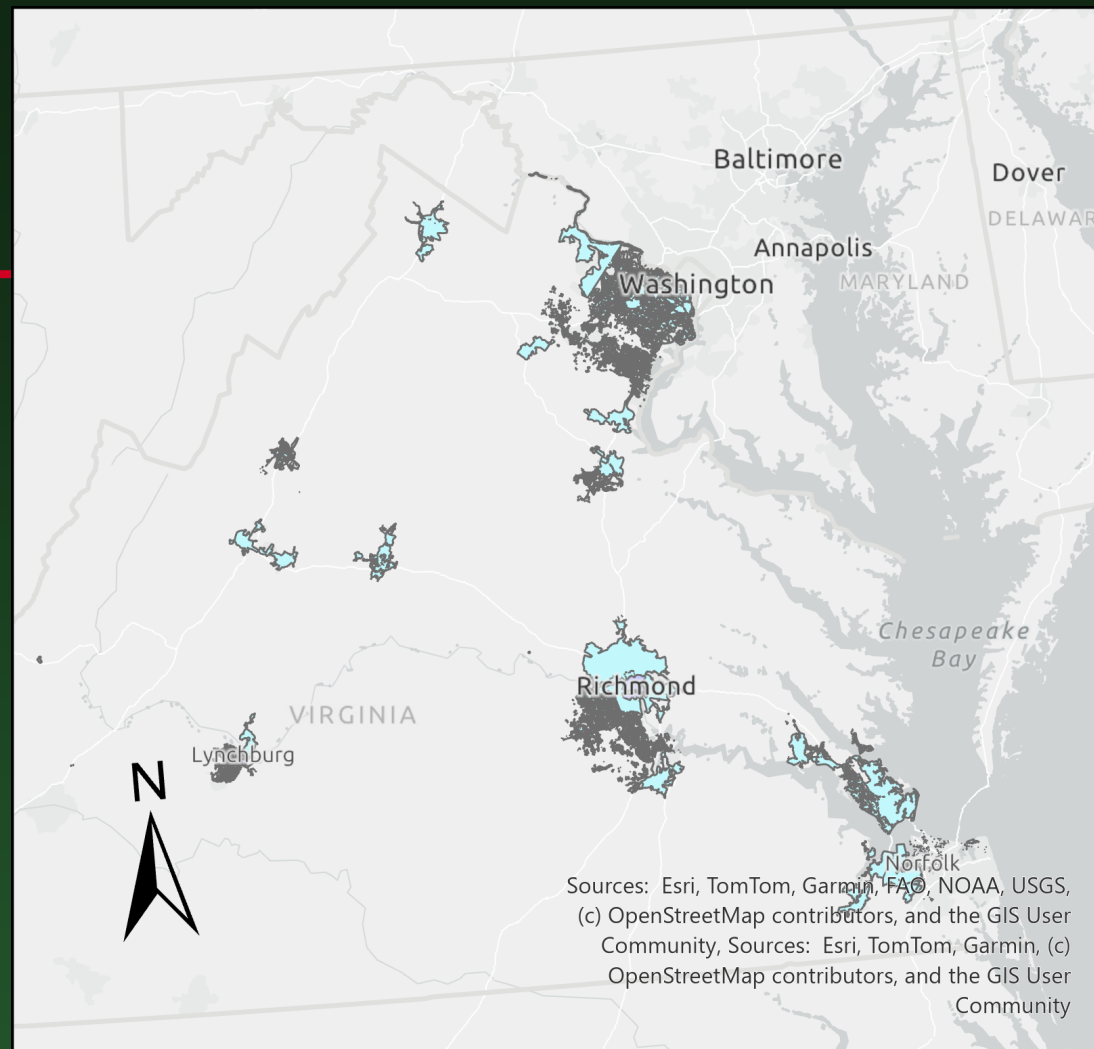


Explanation

-  MS4: Municipal Separate Storm Sewer System
-  CSS: Combined Sewer System

Virginia

- Updated Shapefile available early 2026.
- Awaiting confirmation on CSS areas.
 - Alexandria County
 - Covington County
 - Richmond County
 - Lynchburg County

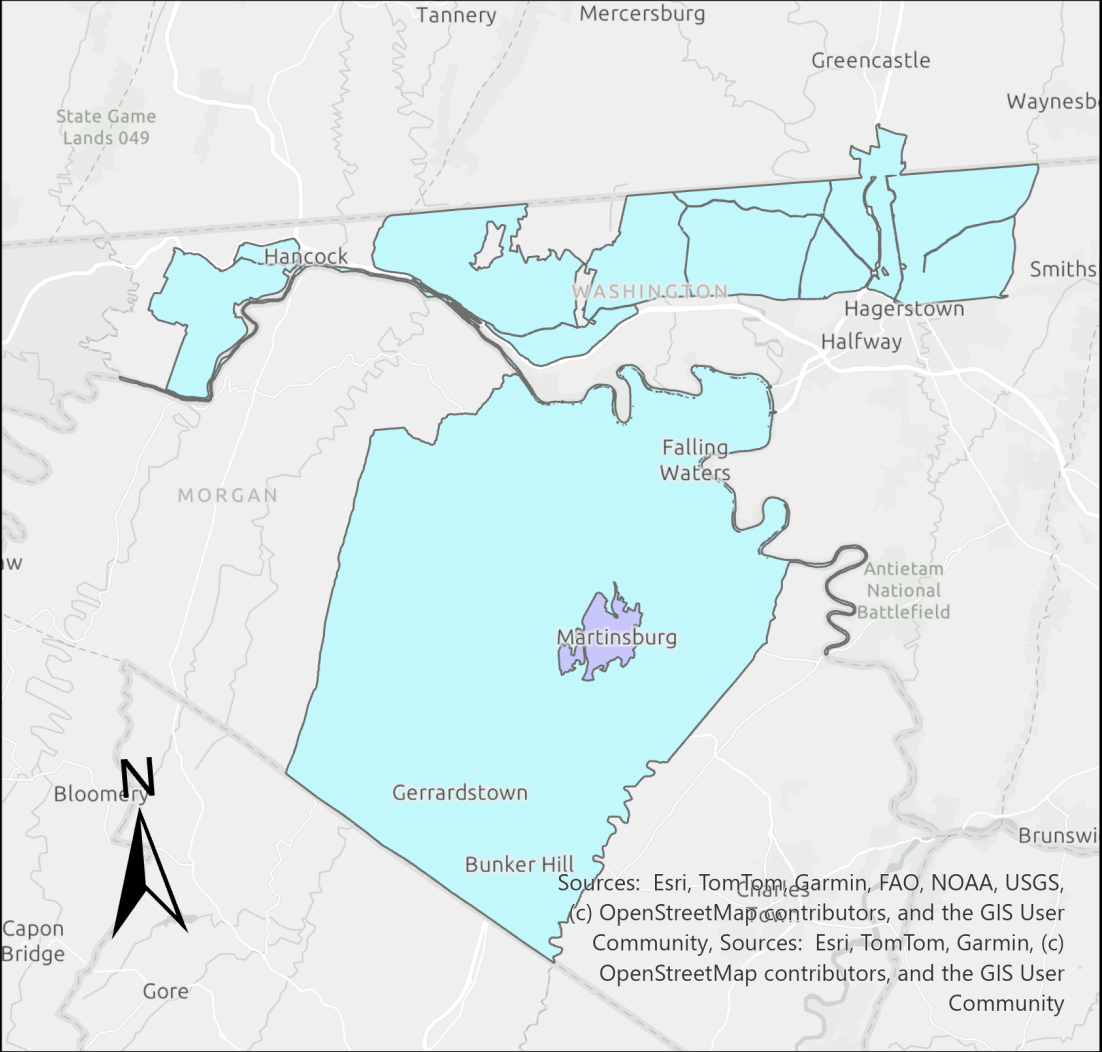


Explanation


-  MS4: Municipal Separate Storm Sewer System
-  CSS: Combined Sewer System


West Virginia

- Awaiting Response



Explanation

 **MS4: Municipal Separate Storm Sewer System**

 **CSS: Combined Sewer System**

Next Steps

- How do we proceed with the information we have?
- Additional contacts are needed for certain states.

Thank you

Please forward all questions and inquiries to:

rransom@usgs.gov