



Chesapeake Bay Program
Science. Restoration. Partnership.

April 24, 2025

Interconnectivity of Chesapeake Bay Program Goal Implementation Teams and Workgroups

John Wolf, USGS
Gabriel Duran, CRC

This information is preliminary and subject to revision. It is being provided to meet the need for timely best science. The information is provided on the condition that neither the U.S. Geological Survey nor the U.S. Government shall be held liable for any damage resulting from the authorized or unauthorized use of the information.

Credits

A special thanks to:

- Bailey Bosley, USGS-LMG
- Sophie Waterman, USGS-LMG
- Alex Gunnerson, USGS-LMG

- Melinda Lin, Cornell University

Topics



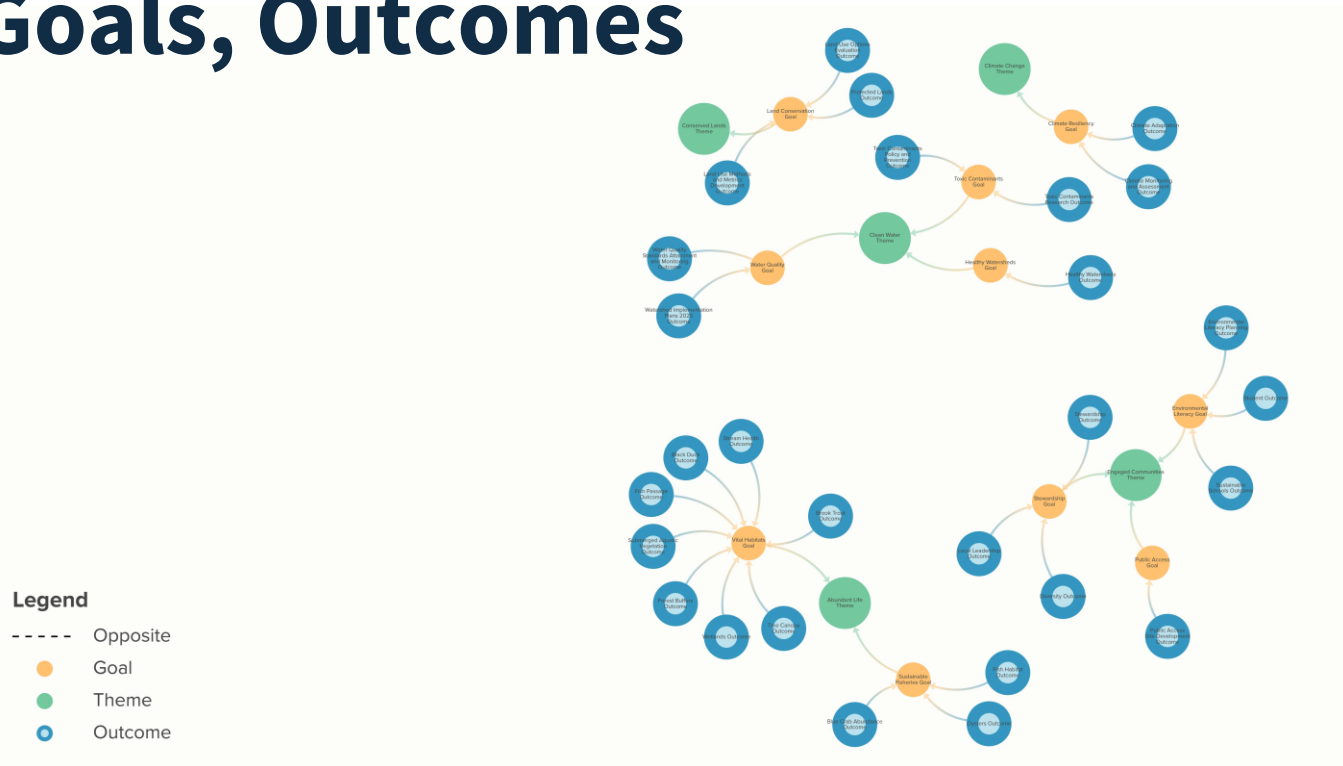
1 Knowledge Graphs/Systems Maps Overview

2 Filtering for Goal Framework Options

3 Outcome Chord Diagrams



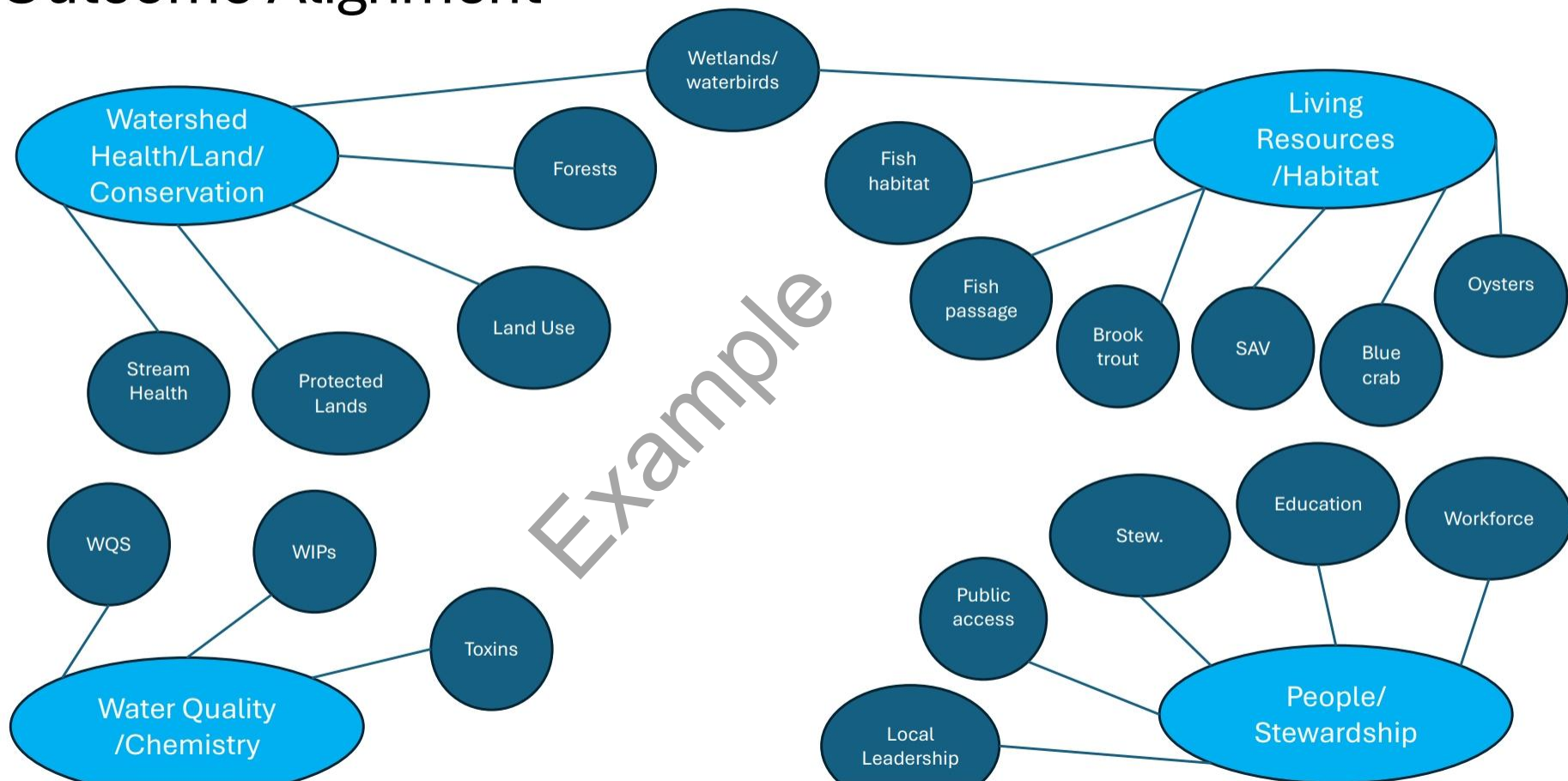
Themes, Goals, Outcomes



Current Draft Knowledge Graphs

Topics	Relationships
<u>Themes, Goals, Outcomes</u>	Outcome → Goal → Theme
<u>Factors Affecting Outcome Progress</u>	Outcome → Factor
<u>Stakeholder Organizations</u>	Outcome → Organization
<u>Decision Support Tools</u>	Outcome → Tool
<u>Science Needs</u>	GIT → Science Need
<u>Indicators</u>	Outcome → Indicator
<u>Workgroups</u>	Outcome → Workgroup/GIT
<u>Partnership</u>	Workgroup → Members
<u>Outcomes Chord Diagram</u>	Outcome → Outcome

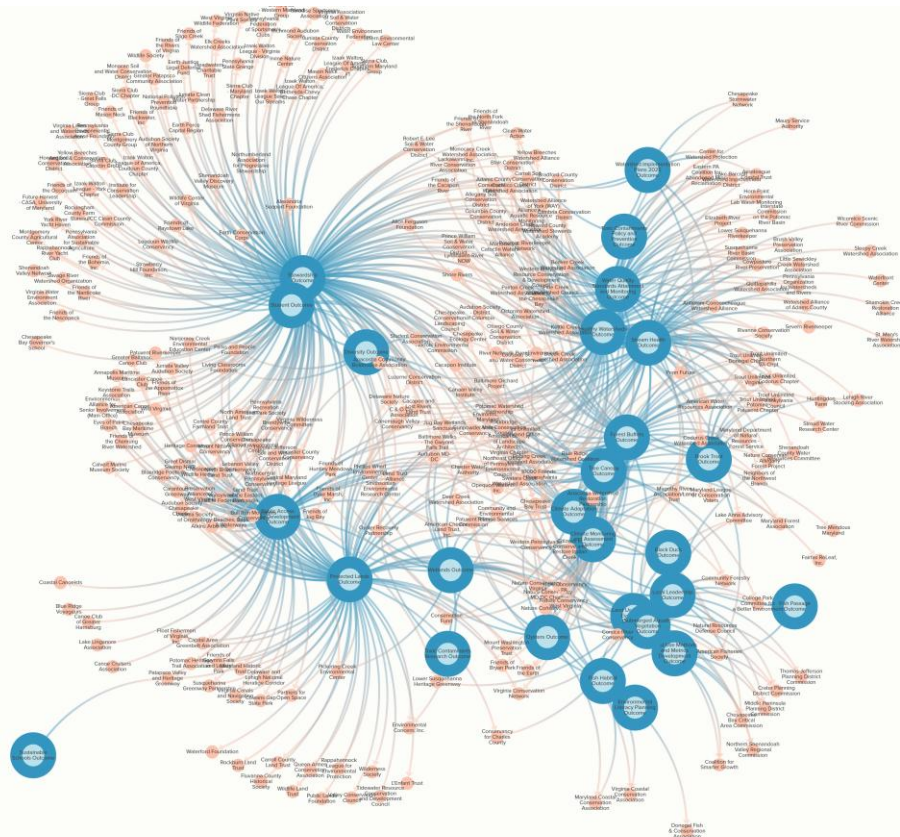
Outcome Alignment



What stakeholder groups are common to similar Outcomes?

Legend

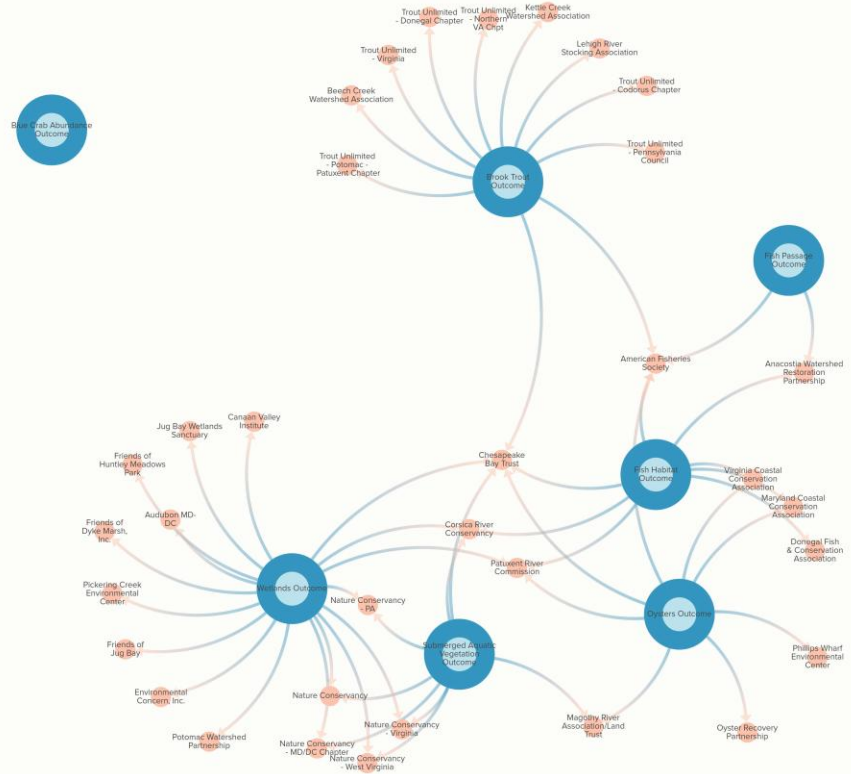
- Opposite
- Outcome
- Organization



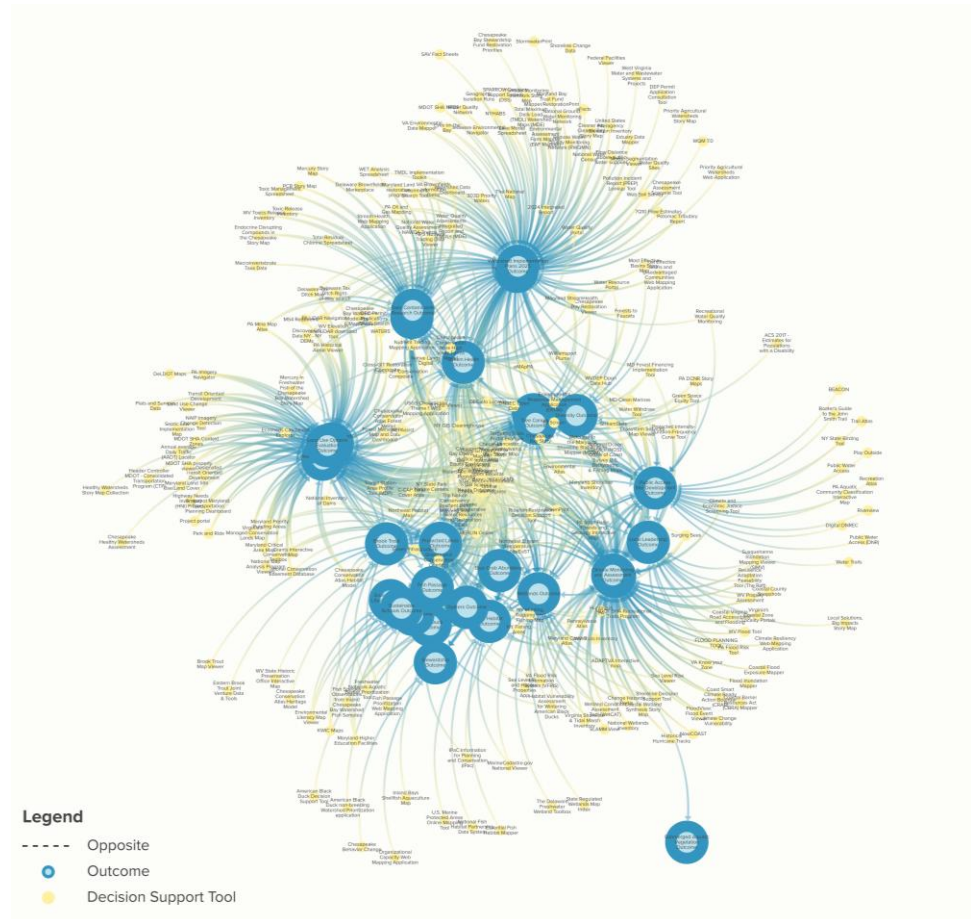
Living Resources Group

Legend

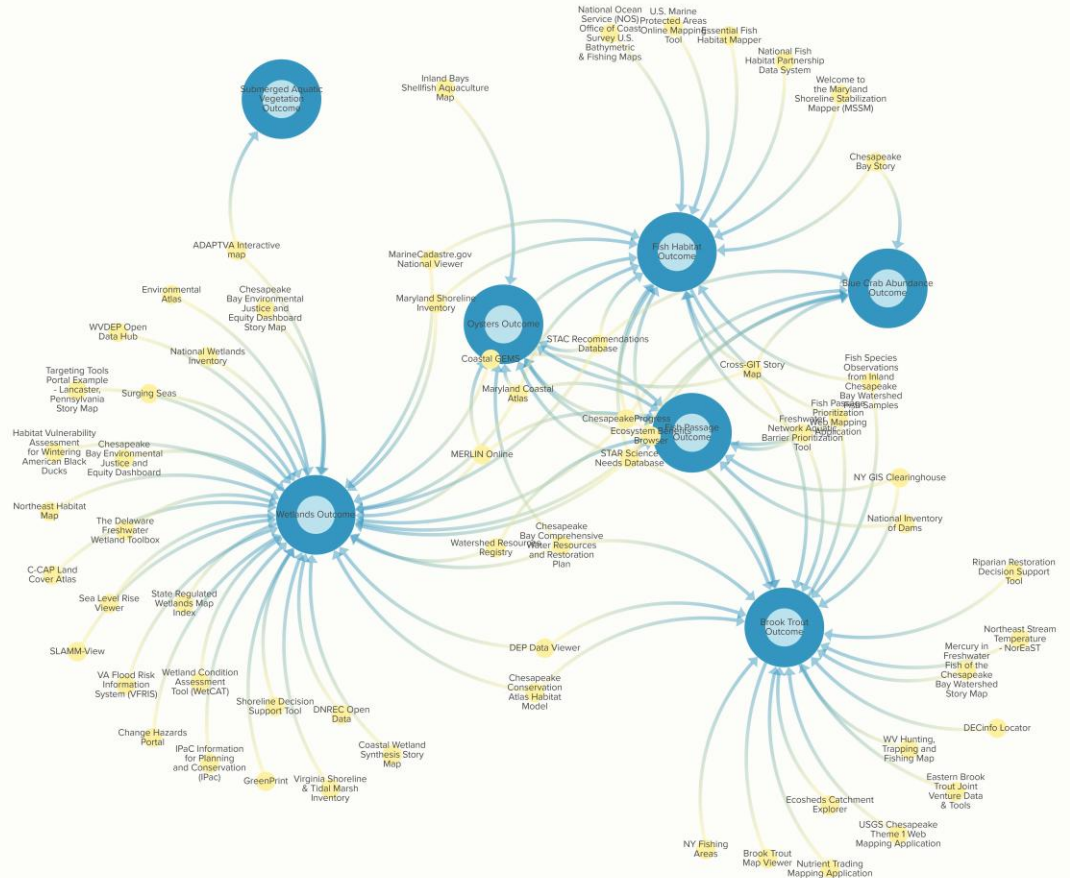
- Opposite
- Outcome
- Organization



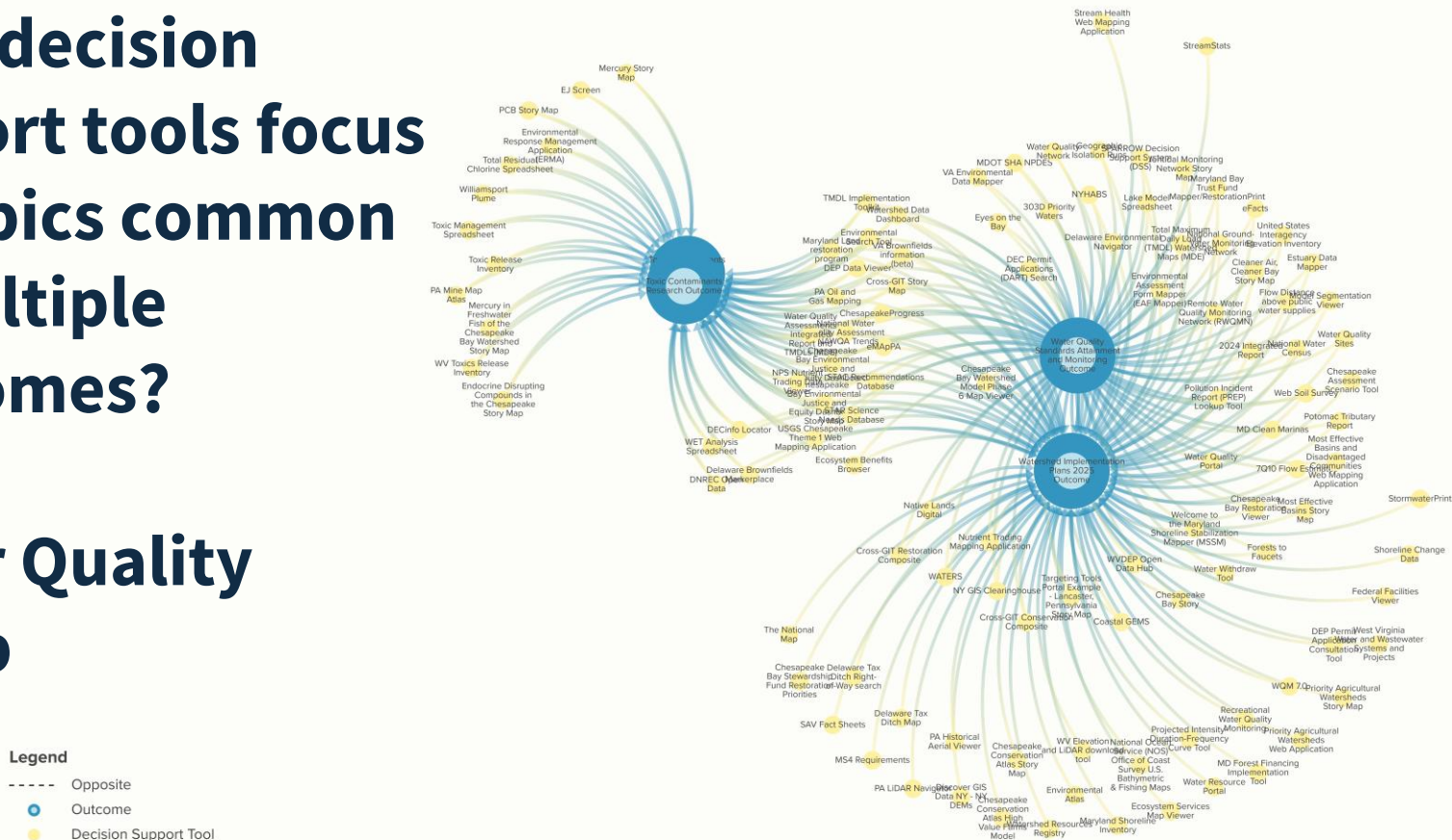
What decision support tools focus on topics common to multiple Outcomes?



Living Resources Group



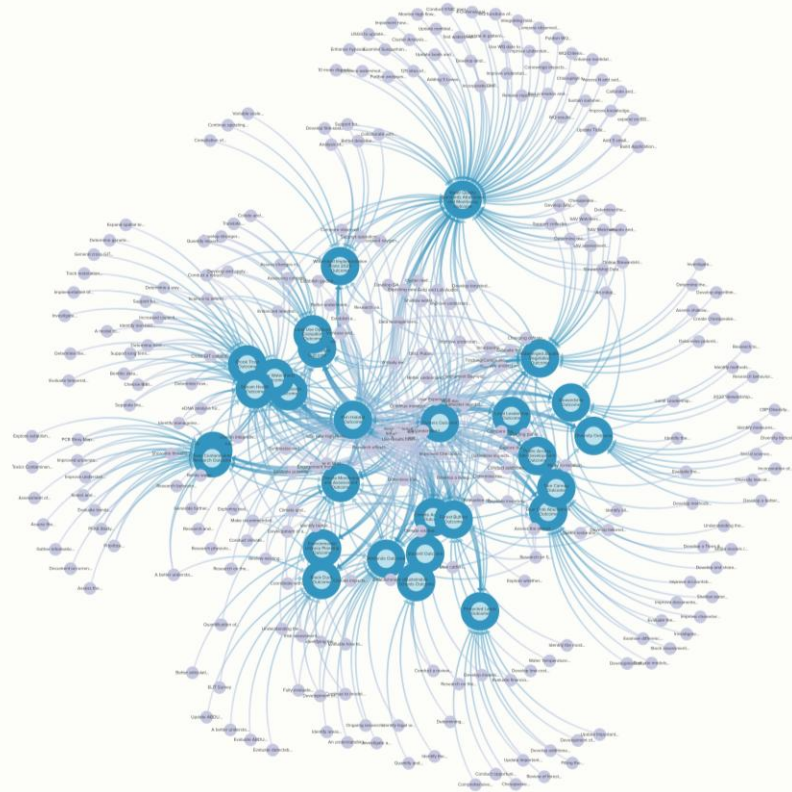
Water Quality Group



What science needs are common to multiple Outcomes?

Legend

- Opposite
- Outcome
- Science Need



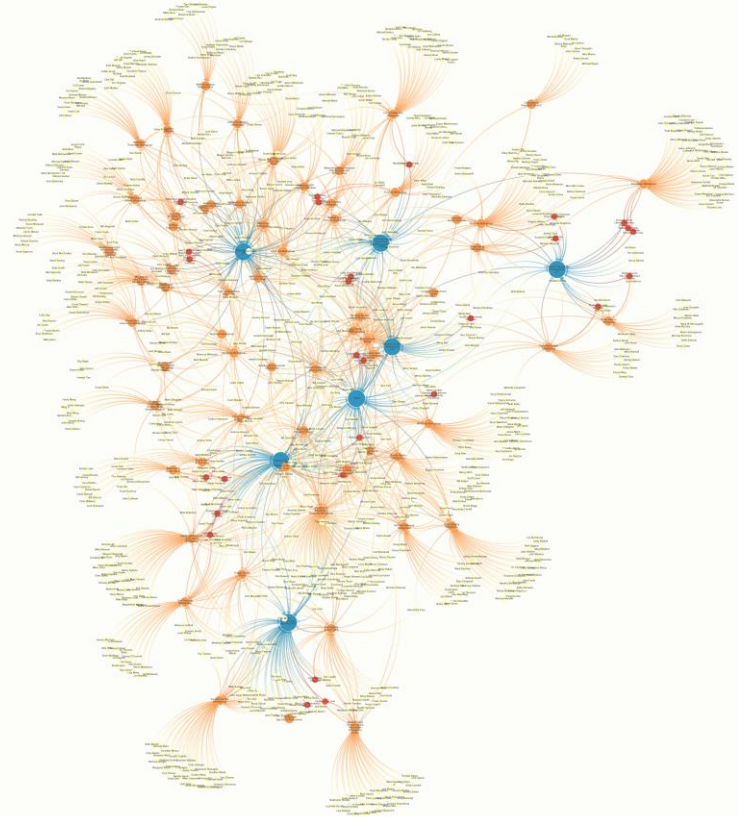
Living Resources Group



How does Workgroup membership align with Outcomes?

Legend

- Opposite
- Goal Implementation Team
- Member
- Workgroup
- Outcome

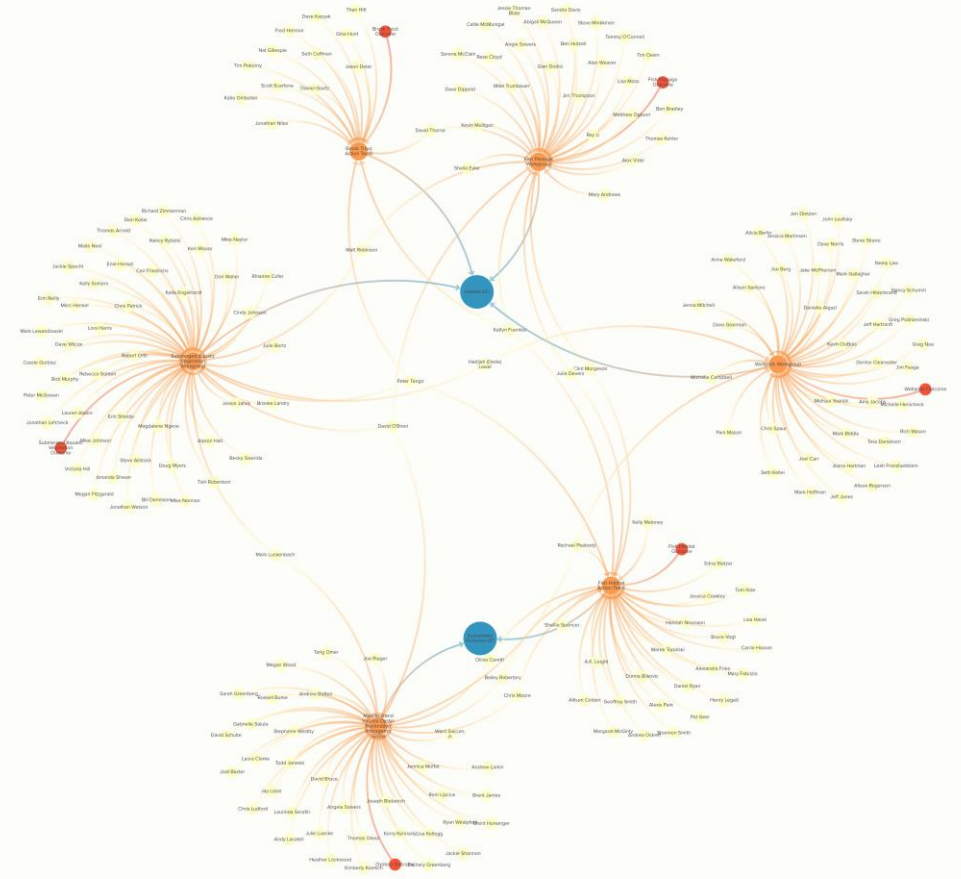


How does Workgroup membership align with Outcomes?

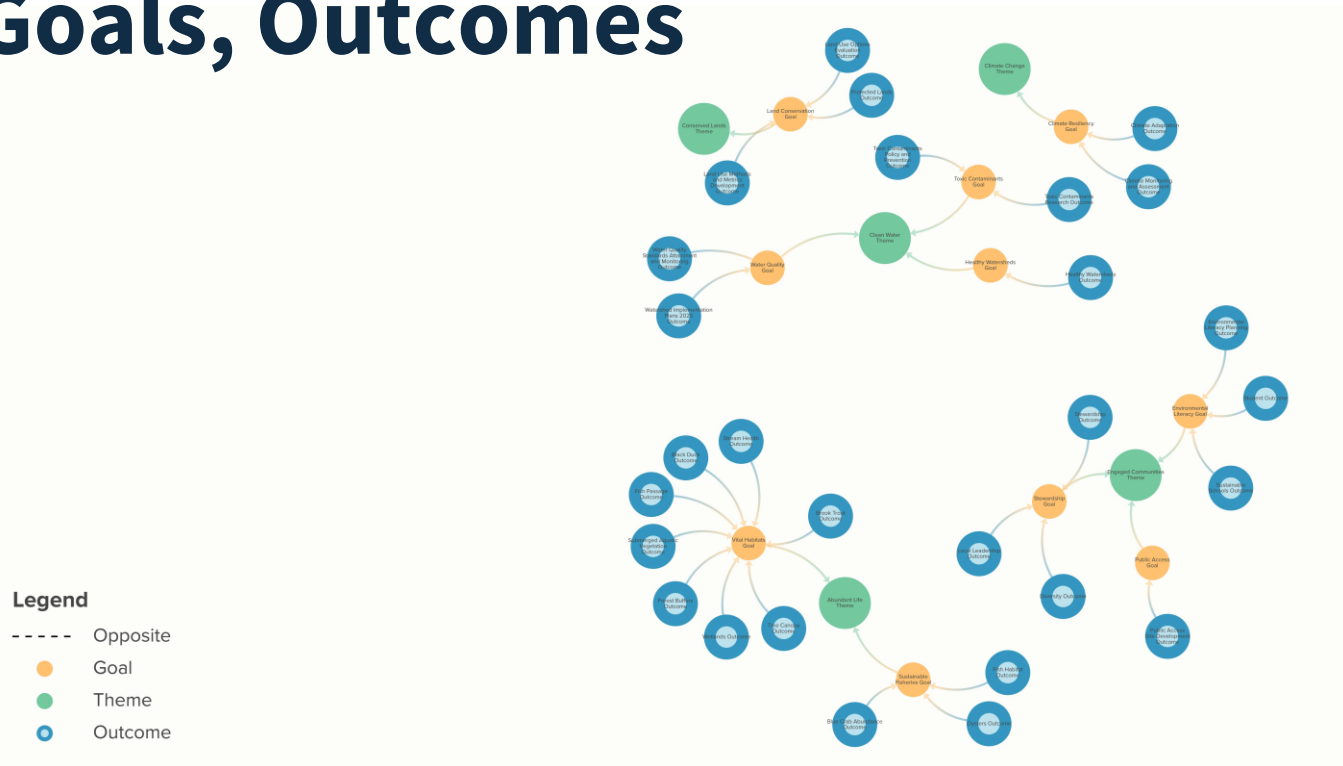
Living Resources Group

Legend

- Opposite
- Goal Implementation Team
- Member
- Workgroup
- Outcome



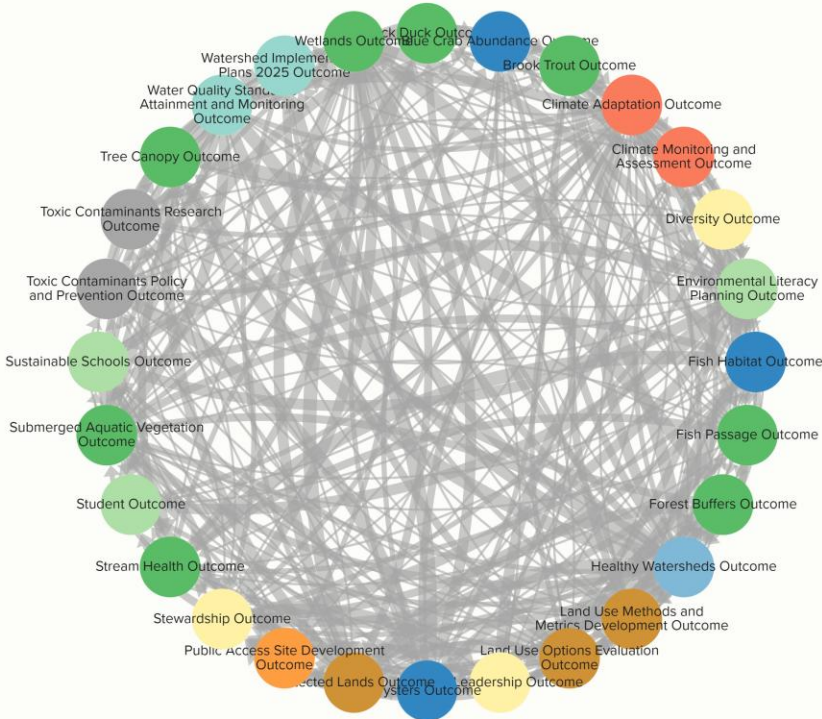
Themes, Goals, Outcomes



Outcome Chord Diagram

Legend

- Strength
- Vital Habitats
- Sustainable Fisheries
- Healthy Watersheds
- Land Conservation
- Stewardship
- Climate Resiliency
- Environmental Literacy
- Water Quality
- Toxic Contaminants
- Public Access

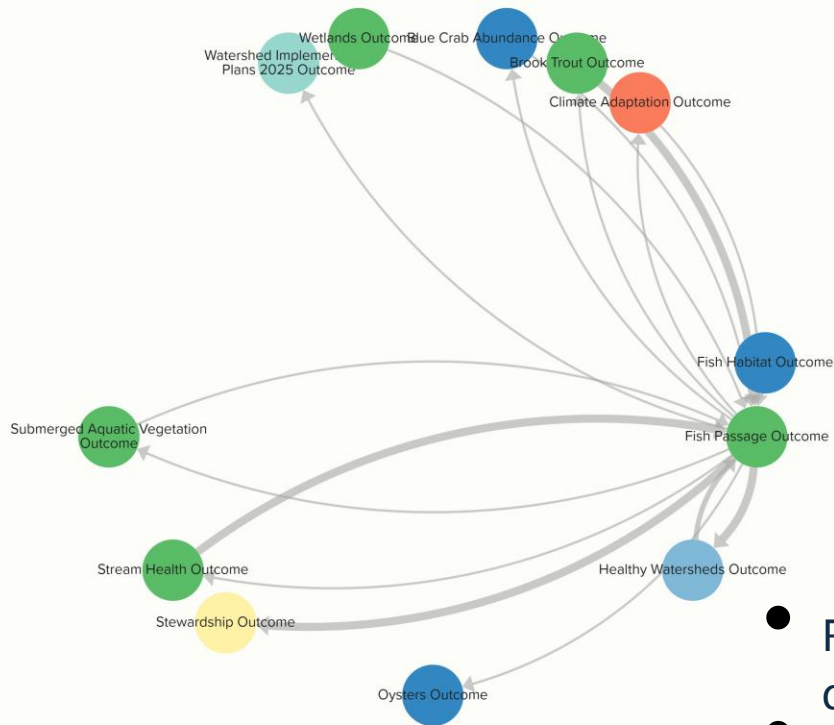


Outcome Chord Diagram

Fish Passage Outcome

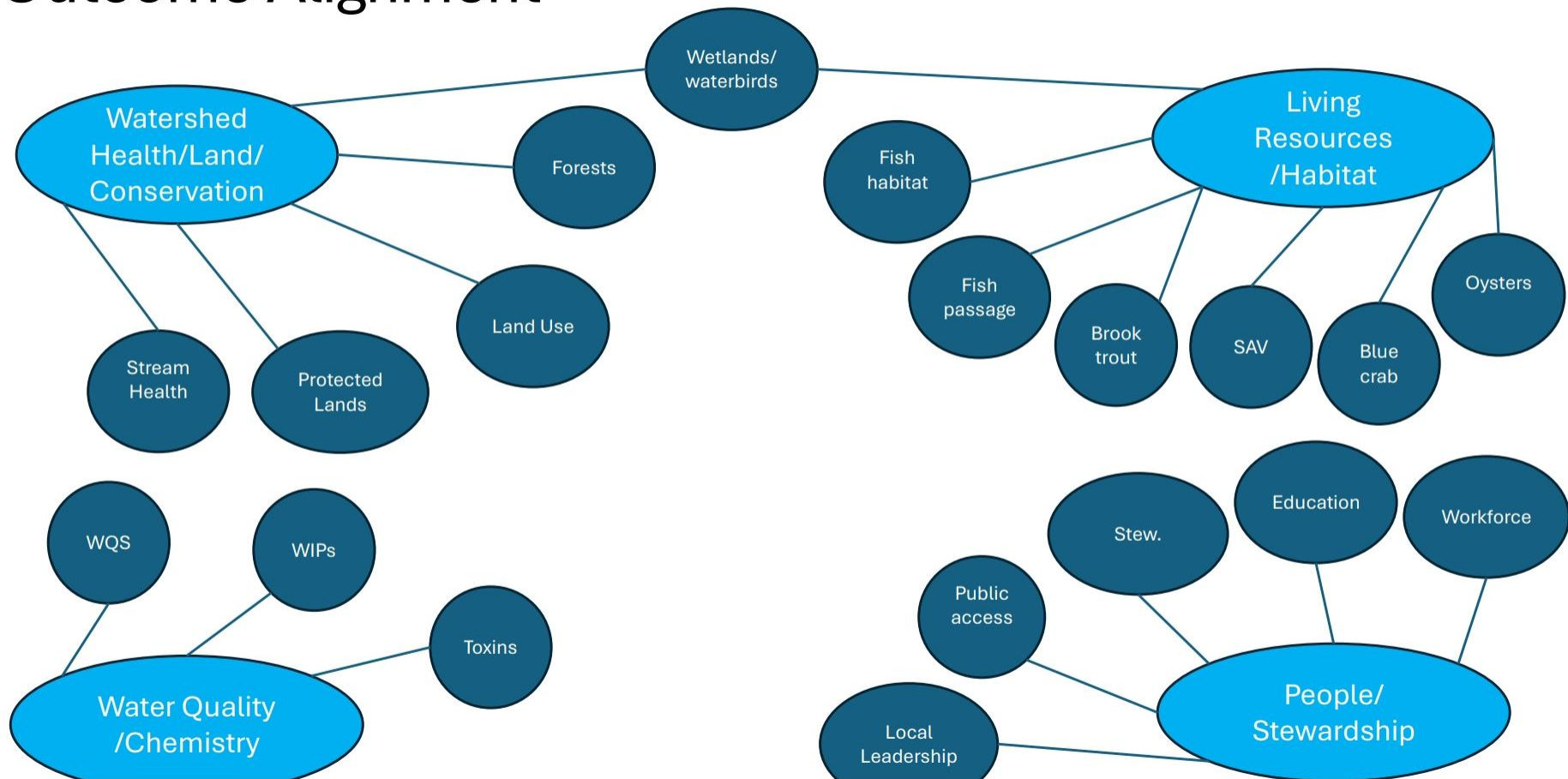
Legend

- Strength
- Vital Habitats
- Sustainable Fisheries
- Healthy Watersheds
- Land Conservation
- Stewardship
- Climate Resiliency
- Environmental Literacy
- Water Quality
- Toxic Contaminants
- Public Access



- Relationships are directional
- Width of arrow ~ strength of relationship

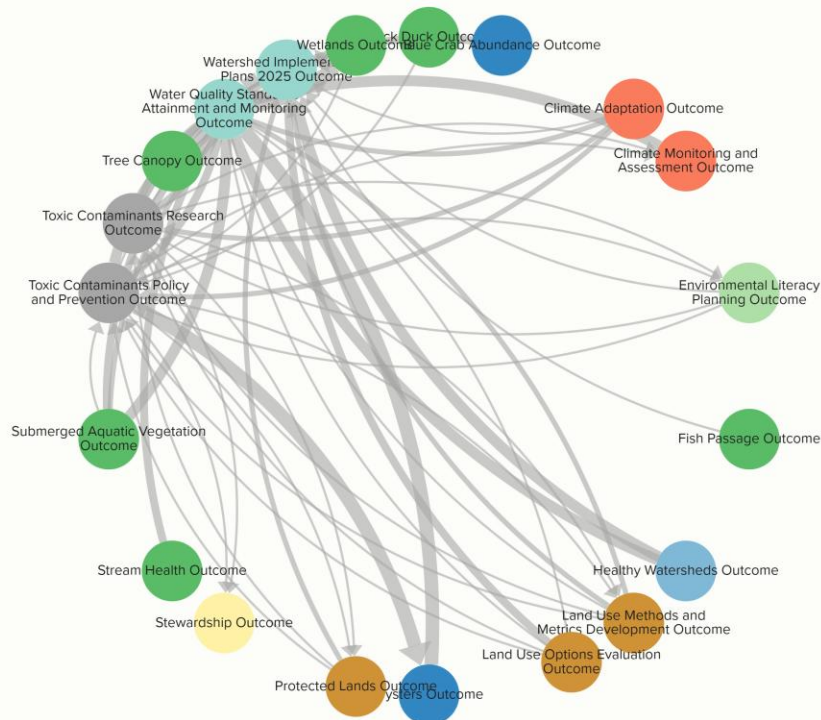
Outcome Alignment



Water Quality Group

Legend

- Strength
- Vital Habitats
- Sustainable Fisheries
- Healthy Watersheds
- Land Conservation
- Stewardship
- Climate Resiliency
- Environmental Literacy
- Water Quality
- Toxic Contaminants
- Public Access



Thank you

Any questions?

jwolf@chesapeakebay.net



Chesapeake Bay Program

Science. Restoration. Partnership.