

Assessment of IM Criteria in the Chesapeake Bay

Gary Shenk

TMAW Instantaneous Minimum Workshop

12/2/13

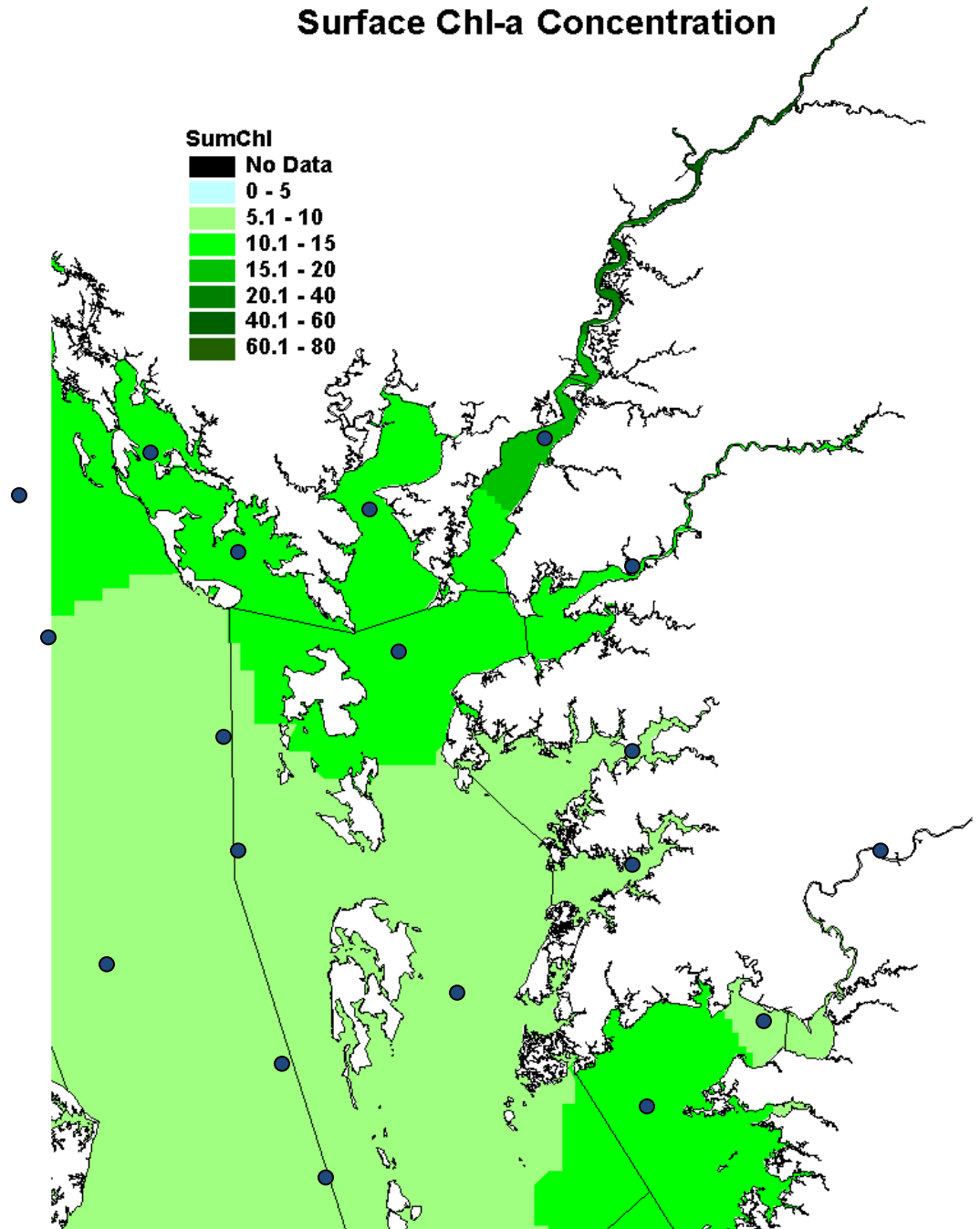
Dissolved Oxygen Criteria

	Migratory	Open Water	Deep Water	Deep Channel
Instantaneous	Not Eval	Not Eval	Not Eval	Evaluated
1-day mean			Not Eval	
7-day mean	Not Eval	Not Eval		
30-day mean		Evaluated	Evaluated	

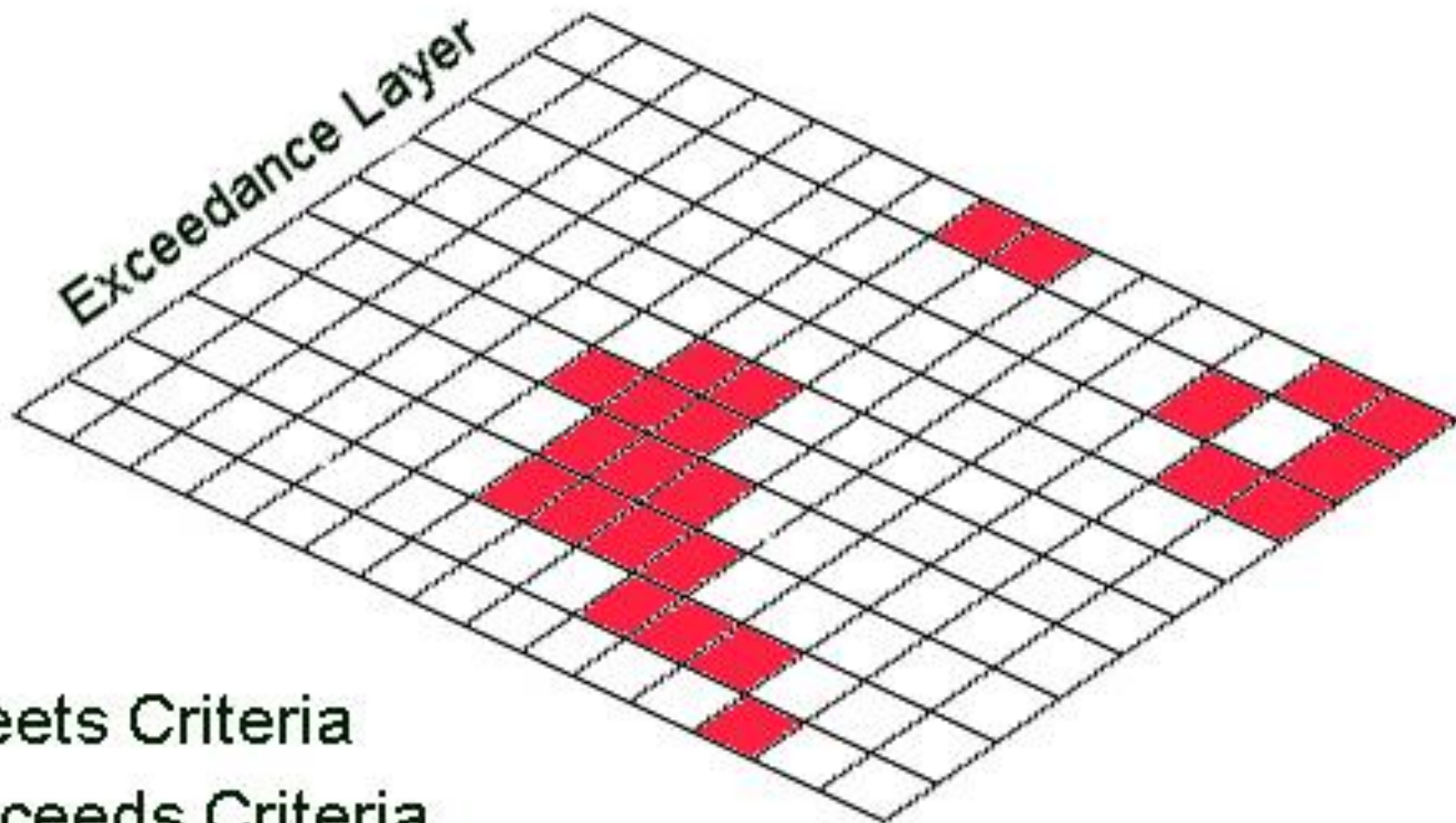
*Developing a
CFD for
evaluating
criteria
attainment*

**Interpolate the Bay
water quality
monitoring data for
each month**

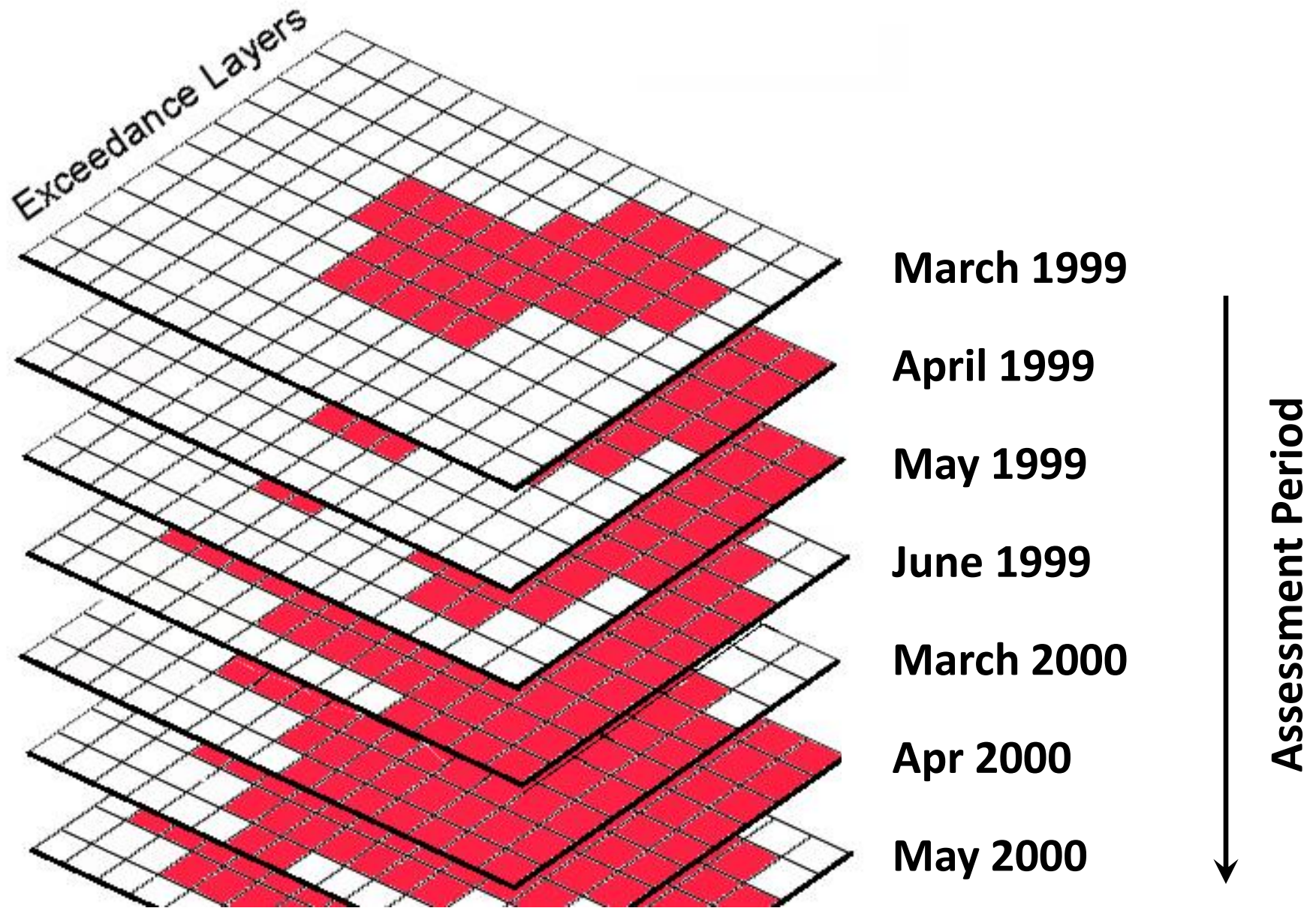
 Station



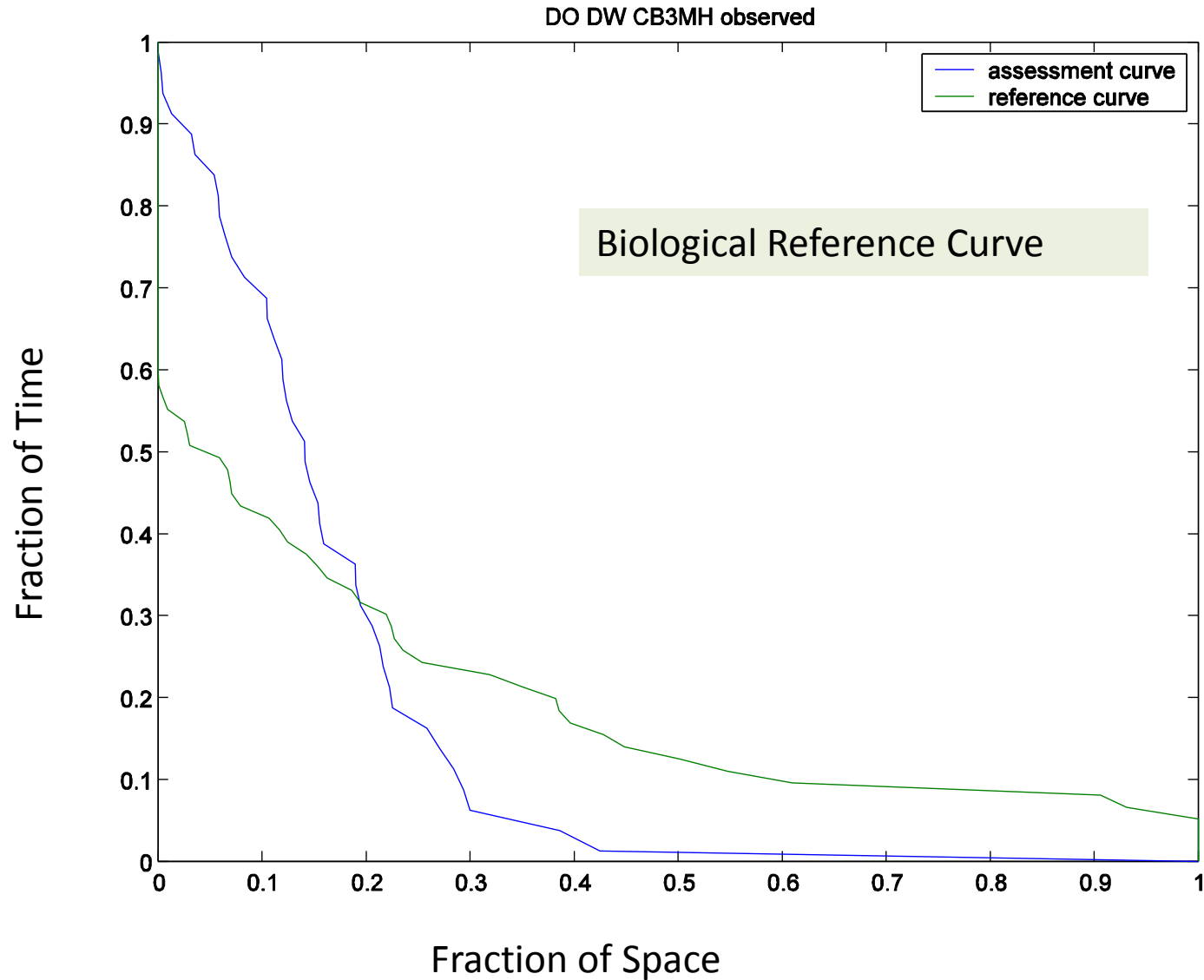
Identify the cells in a CBP segment / designated use area that exceed the criteria for that month



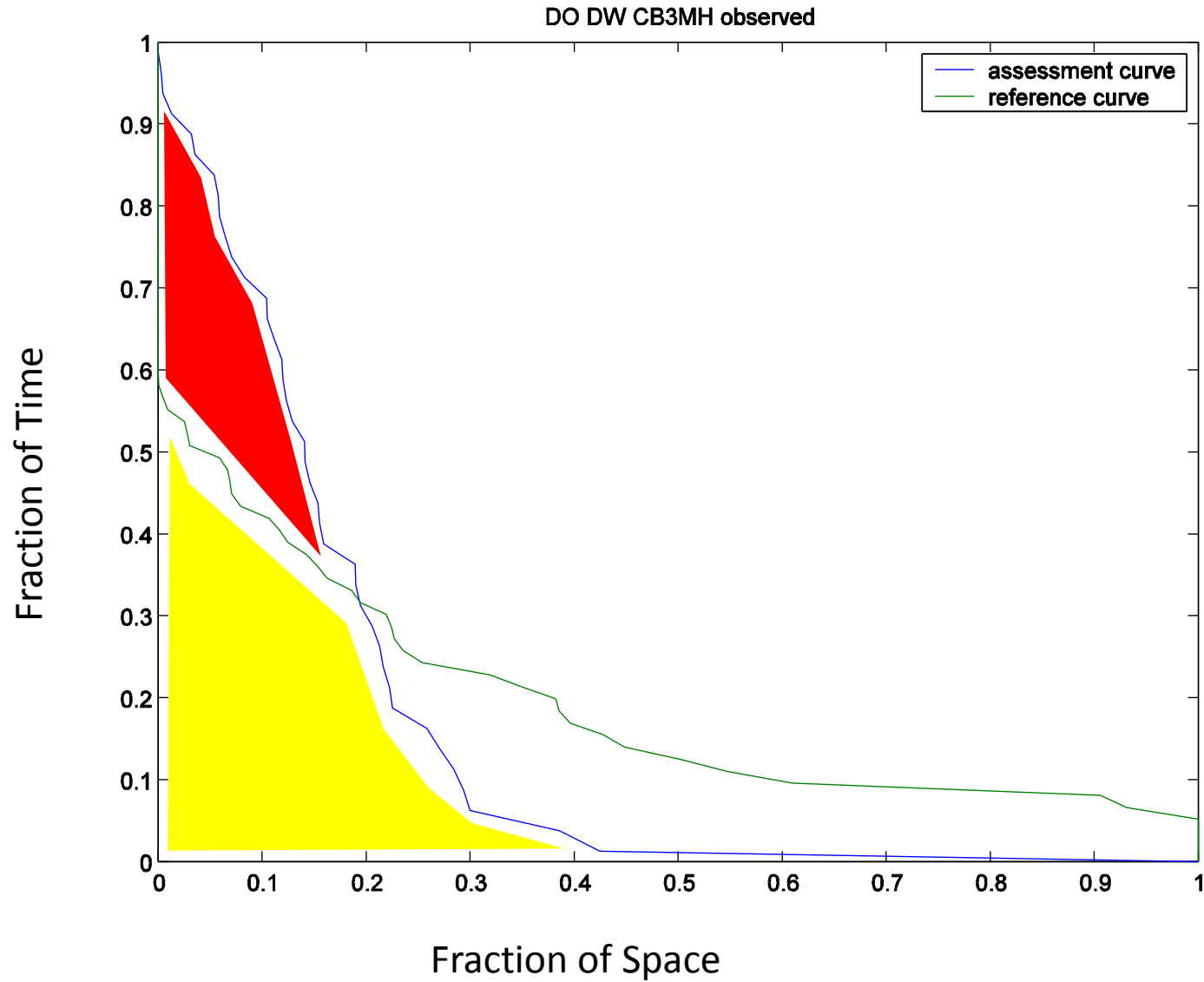
Assess each month for three years



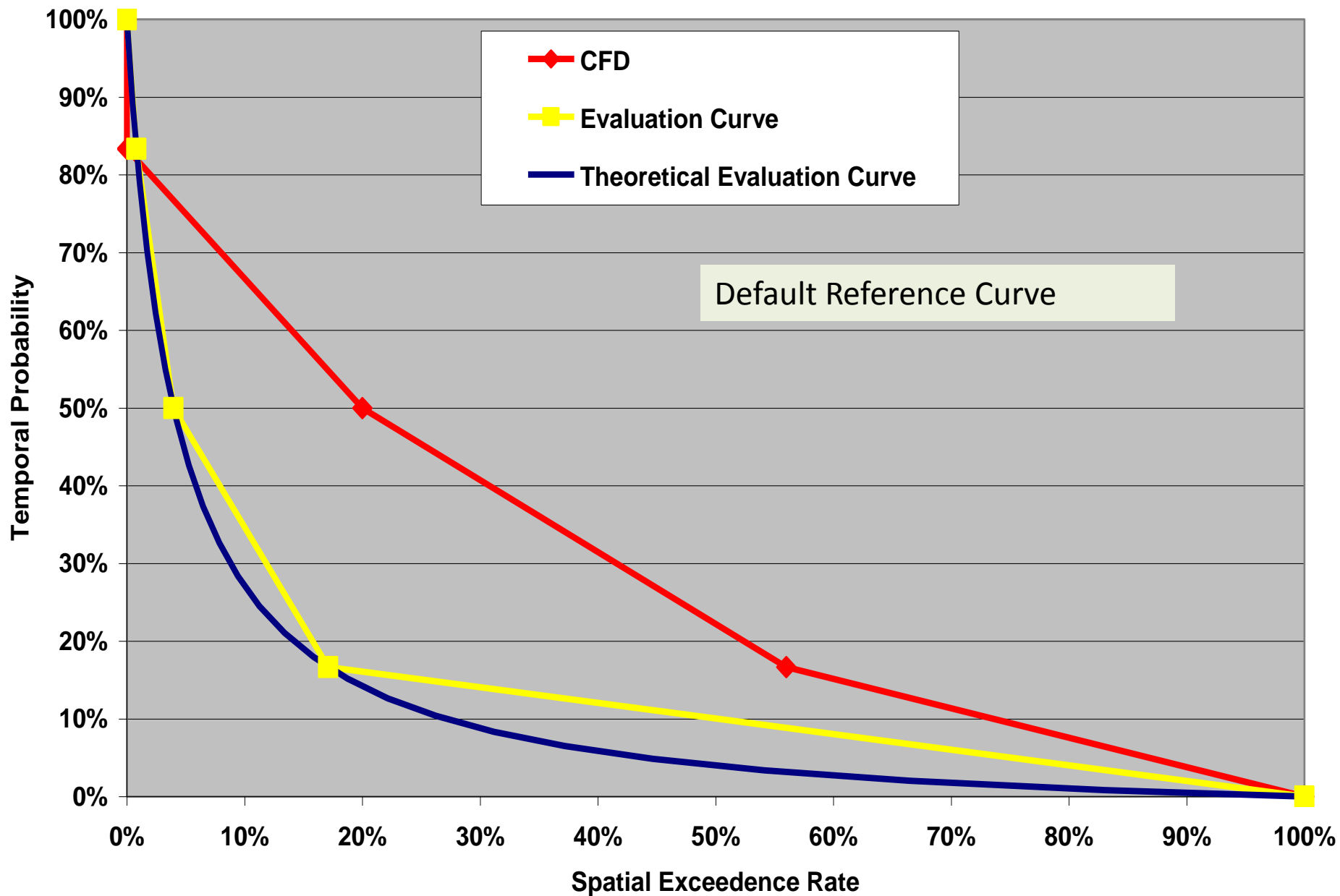
A real CFD



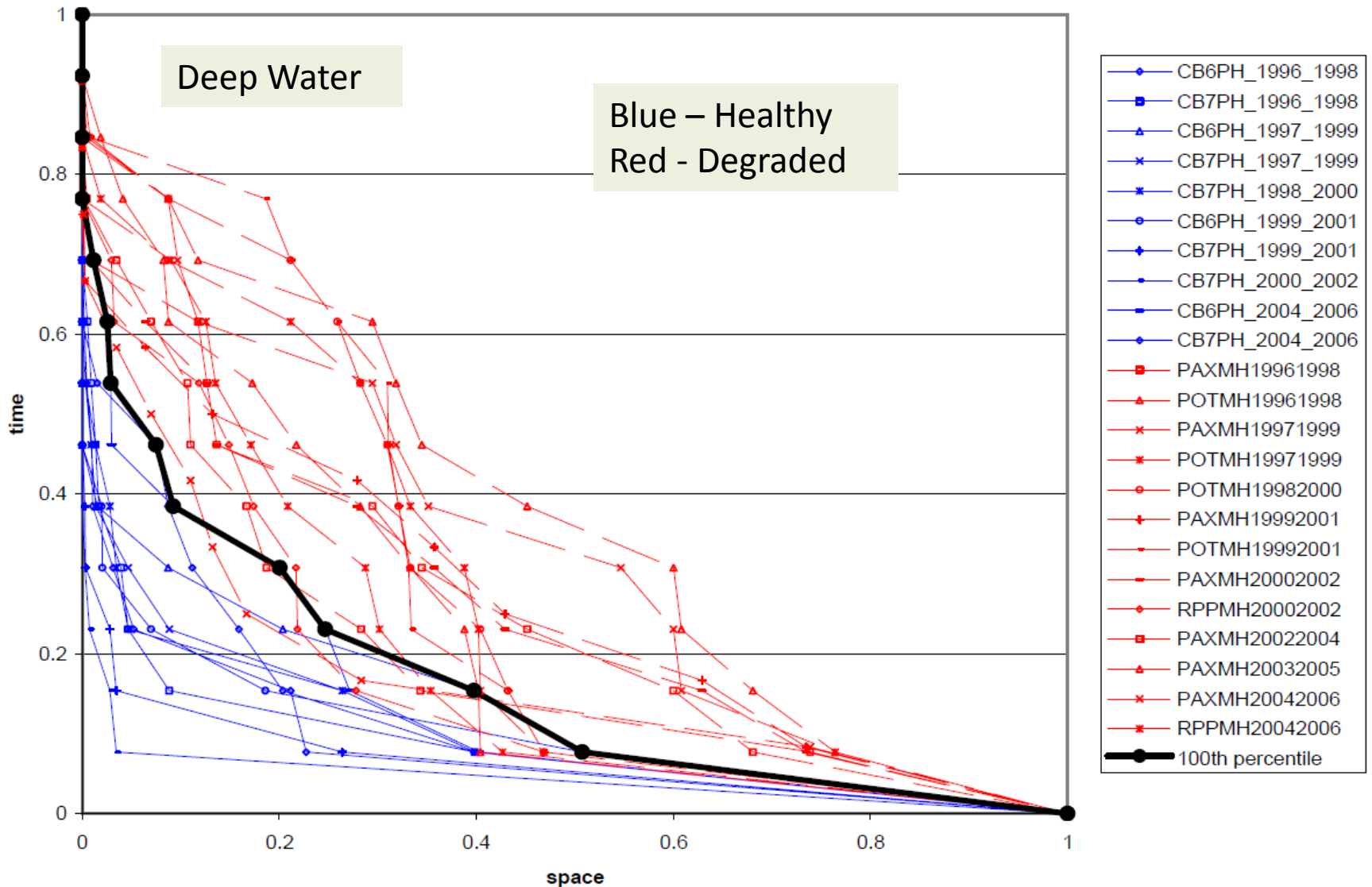
A real CFD



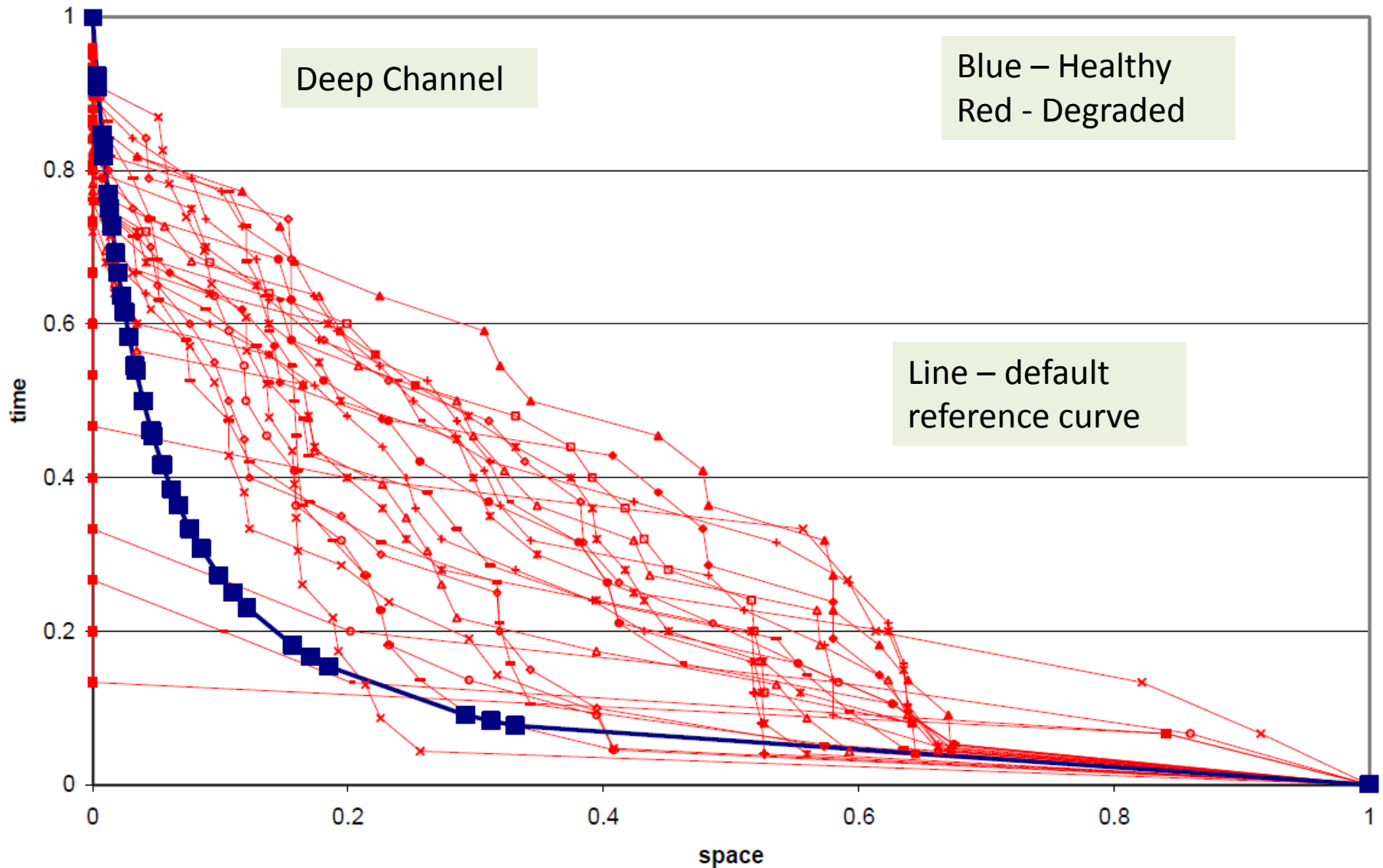
CFD Evaluation



Biological Reference Curve



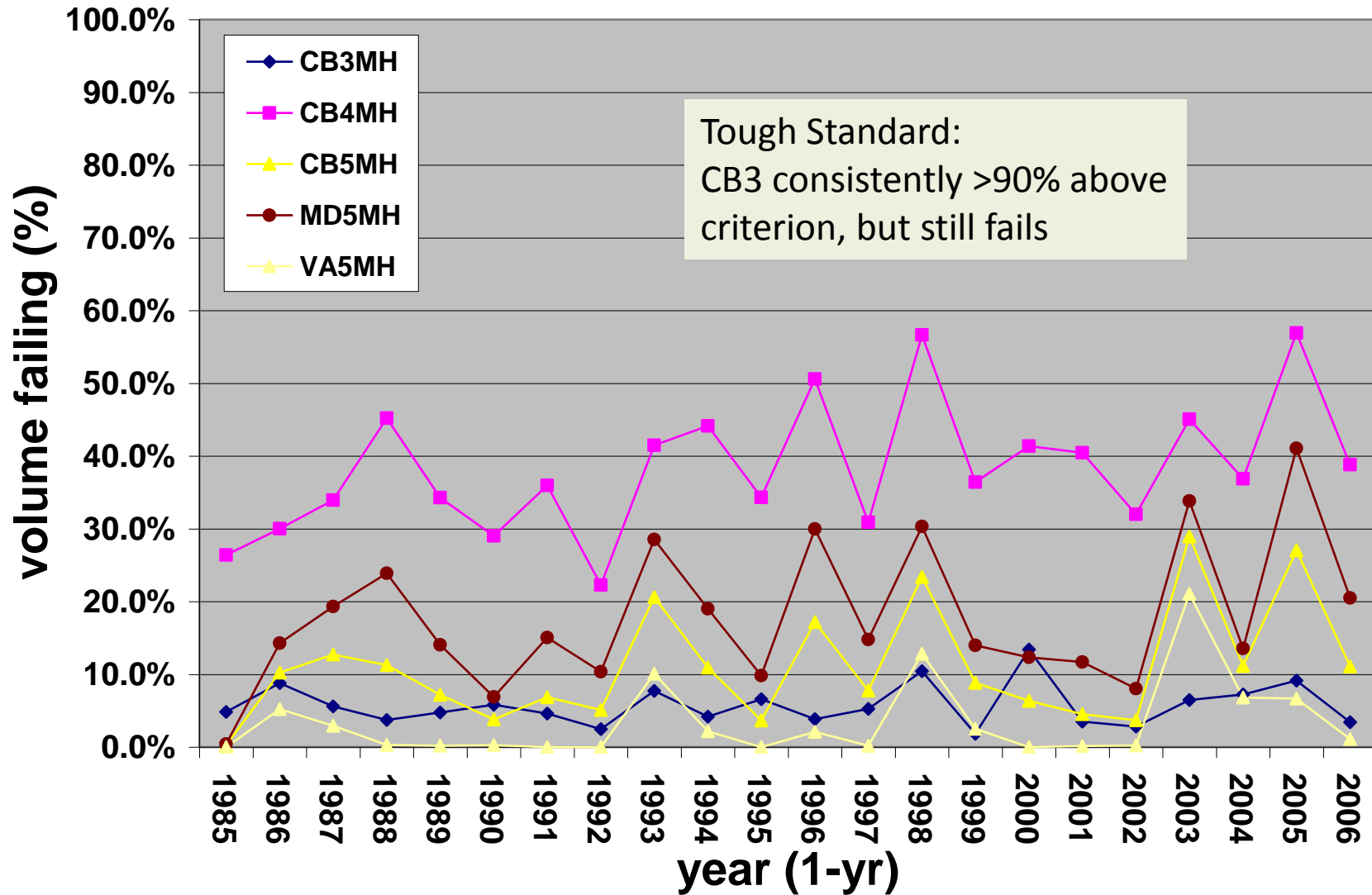
No Biological Reference Curve



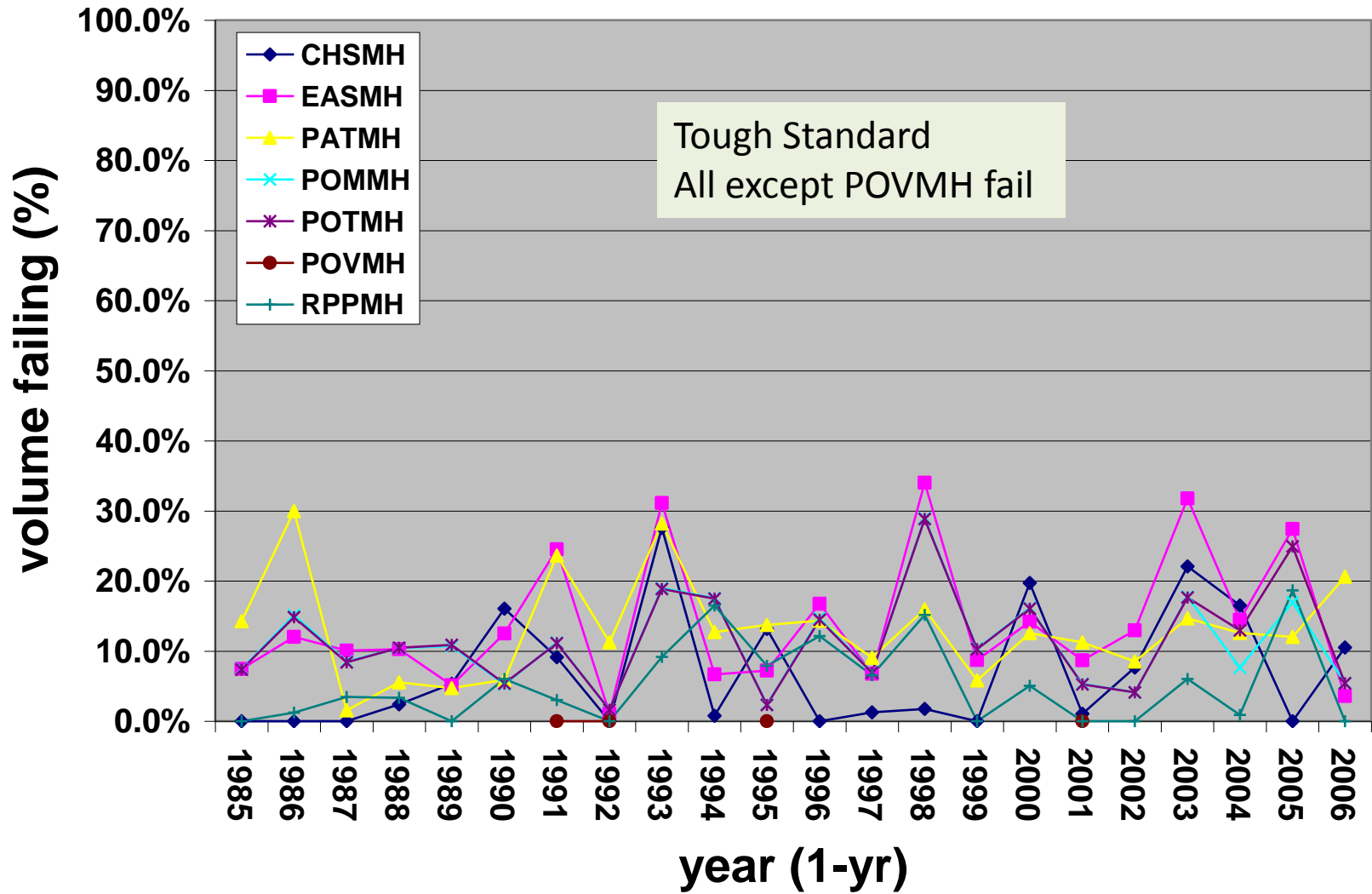
Assessments

- 12 deep channel areas assessed
- 5 periods 2005-2007 through 2009-2011
- Out of 60 assessments, 7 passed
 - All five periods in Virginia Potomac Mesohaline (<1% of Potomac Mesohaline)
 - Two of five periods in Virginia section of CB5MH

Mesohaline Deep Channel Failure Rate



MH Tribs DC Failure Rate



Rationale for a Reference Curve

- 2003 Criteria and Allocation Documents
 - Keystone species are resistant to 0.6 mg/l and that extensive mortality is likely only under persistent exposure
 - The states and EPA determined that conditions where no organism would be negatively effected at any time or place would not be achievable economically or technologically.
- 2009 Criteria Document
 - Multiple references indicate that low oxygen conditions, may have been a historical feature in the deep channel of the bay. although not nearly as severe as today.

Dissolved Oxygen Criteria

	Migratory	Open Water	Deep Water	Deep Channel
Instantaneous	Not Eval	Not Eval	Not Eval	Evaluated
1-day mean			Not Eval	
7-day mean	Not Eval	Not Eval		
30-day mean		Evaluated	Evaluated	