



Planning for October 22-23: What the WQGIT Needs to Know and Decide about the Midpoint Assessment

Presentation to the WQGIT

On Behalf of the Ad Hoc Planning Team

September 24, 2012

Updated to Reflect WQGIT Input on 9/24



Big Picture Question for October 22-23

Where do we as a Partnership want to
be in 2017 and 2025?

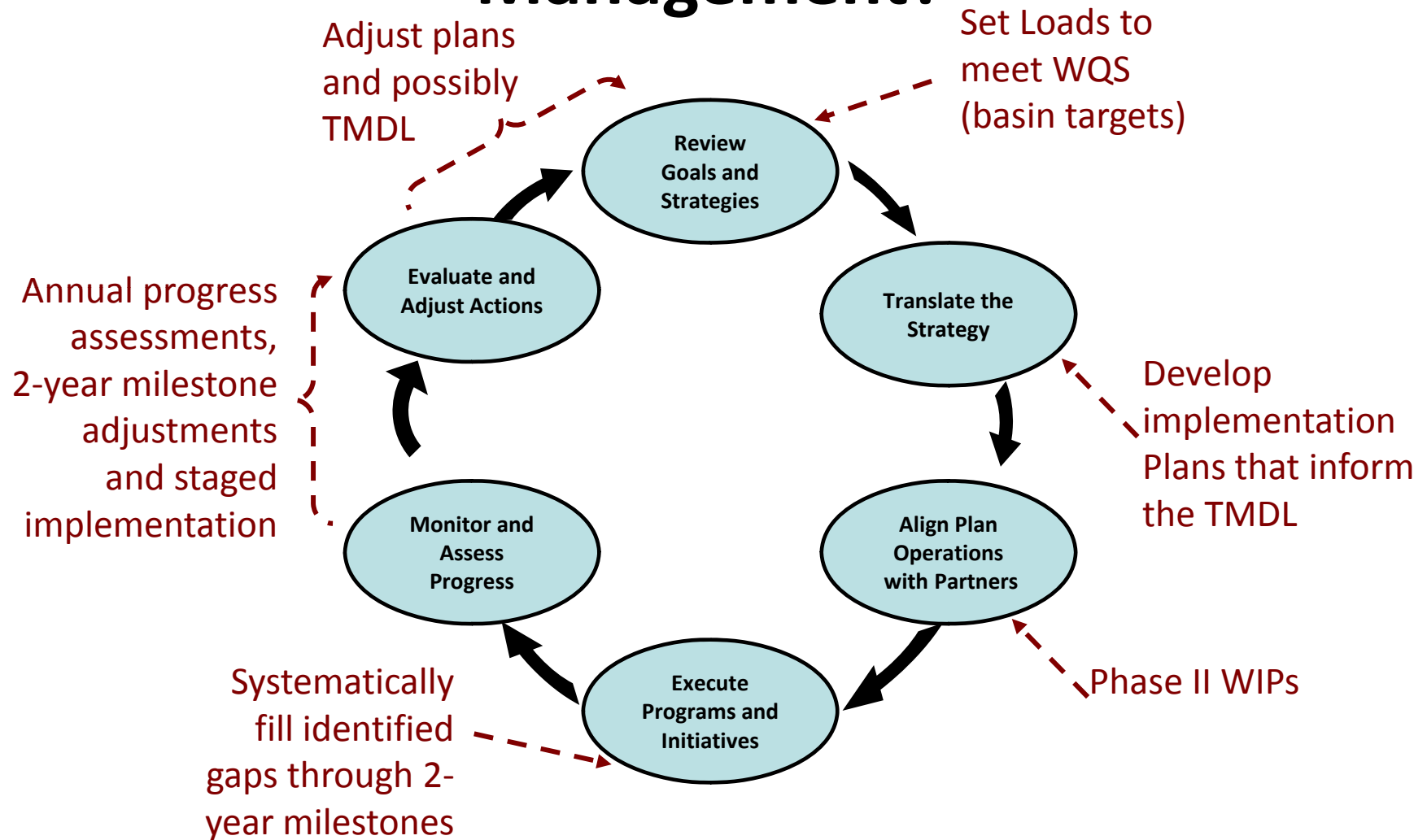
What We Also Need to Be Able to Answer by 4 pm October 23

- How are we addressing adaptive management?
- What is the midpoint assessment?
 - How does it relate to the 60% by 2017 goal?
 - How does it relate to the accountability framework described in the Bay TMDL?
 - Who is the lead for the midpoint assessment and related deliverables?
 - What is the approximate schedule?
- What barriers to implementation need to be addressed to help meet the 60% by 2017 goal or in the midpoint assessment for the Phase III WIPs?
- Guiding Principles – What are they and how will they be applied?
- What are the Workgroups' priorities for the midpoint assessment?
 - Do these priorities address the barriers to implementation?
 - How do they relate to the Guiding Principles?
 - Roughly speaking, how much of a difference would it make in load, expected reductions, or implementation decisions in each state? (speaking generally)
 - What resources and how much time would it take to address this priority?
 - Are there downsides to this priority, such as generating confusion with changing numbers?
 - What would happen if this change were not made as part of the midpoint assessment?
 - Based on the above, does the WQGIT agree this should be address in the midpoint assessment?
 - If yes, what are the next steps, who is taking them on, and by when?
- What does the WQGIT need to communicate to the PSC?
- How should the WQGIT communicate issues related to the midpoint assessment to our partners and to the public?

We Can Begin to Answer **Some** of These Questions Today

- How are we addressing adaptive management?
- What is the midpoint assessment?
 - How does it relate to the 60% by 2017 goal?
 - How does it relate to the accountability framework described in the Bay TMDL?
 - Who is the lead for the midpoint assessment and related deliverables?
 - What is the approximate schedule?
- What barriers to implementation need to be addressed to help meet the 60% by 2017 goal or in the midpoint assessment for the Phase III WIPs?
- Guiding Principles – What are they and how will they be applied?
- What are the Workgroups' priorities for the midpoint assessment?
 - Do these priorities address the barriers to implementation?
 - **How do they relate to the Guiding Principles?**
 - Roughly speaking, how much of a difference would it make in load, expected reductions, or implementation decisions in each state? (speaking generally)
 - What resources and how much time would it take to address this priority?
 - Are there downsides to this priority, such as generating confusion with changing numbers?
 - What would happen if this change were not made as part of the midpoint assessment?
 - Based on the above, does the WQGIT agree this should be address in the midpoint assessment?
 - If yes, what are the next steps, who is taking them on, and by when?
- What does the WQGIT need to communicate to the PSC?
- How should the WQGIT communicate issues related to the midpoint assessment to our partners and to the public?

How Are We Addressing Adaptive Management?

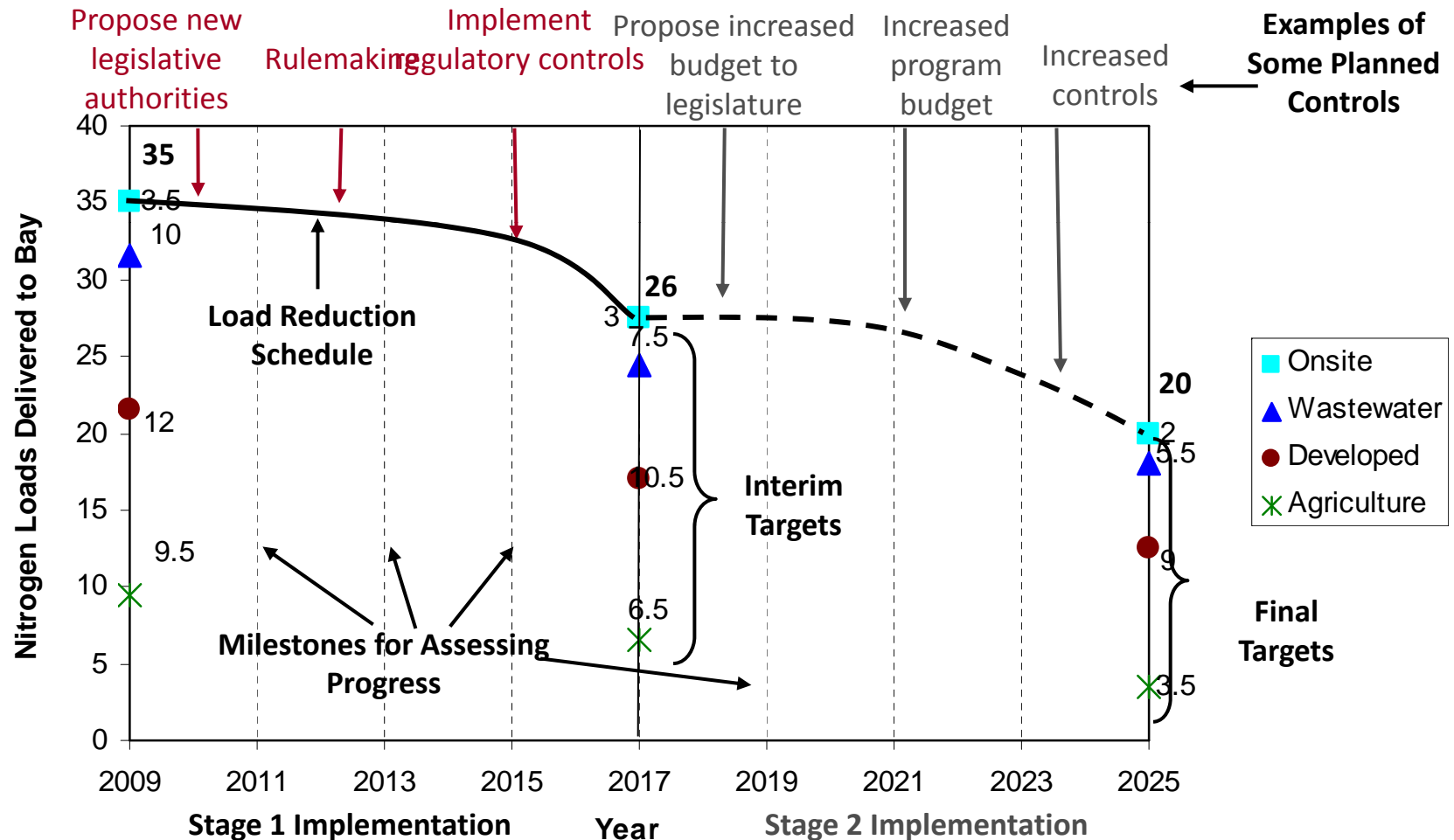


Source: Shared almost identical slide with the WQSC in July 2009

CBP's Decision Framework



Staged Implementation



Source: Presentation to PSC in October 2009



What is the Midpoint Assessment?

➤ Ultimate Goal:

- Ensure Partnership has all practices in place by 2025 to attain water quality standards in the Bay

➤ How?

- Take stock of latest science, data, tools (including models), BMPs, and lessons learned from progress to date
- Findings from Midpoint Assessment will help jurisdictions to prepare for the Phase III WIPs, which will guide milestones and implementation between 2018 and 2025

How Does the Midpoint Assessment Relate to the 60% goal?

Moving Forward on Parallel Tracks

2010

Implementing 60% by 2017

- 2010: Phase I WIPs
- 2011 & 2012: Phase II WIPs
- 2012-2013 Milestones
- 2014-2015 Milestones
- 2016-2017 Milestones
- Annual progress runs
- Tracked using Watershed Model Phase 5.3.2

Midpoint Assessment

- 2012: Gather Partnership input and set priorities
- As directed by WQGIT, gather data, develop methods
- As appropriate, refine and test tools
- Set planning targets for Phase III WIPs
- Develop Phase III WIPs and 2018-2019 milestones

2017

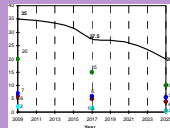
How Does the Midpoint Assessment Relate to the Accountability Framework?

Components of Bay TMDL Accountability Framework

1. Watershed Implementation Plans identify nutrient and sediment targets that meet water quality standards.



2. 2-Year Milestones with programmatic and pollutant reduction commitments



3. Track and Assess Progress implementing WIPs and milestones

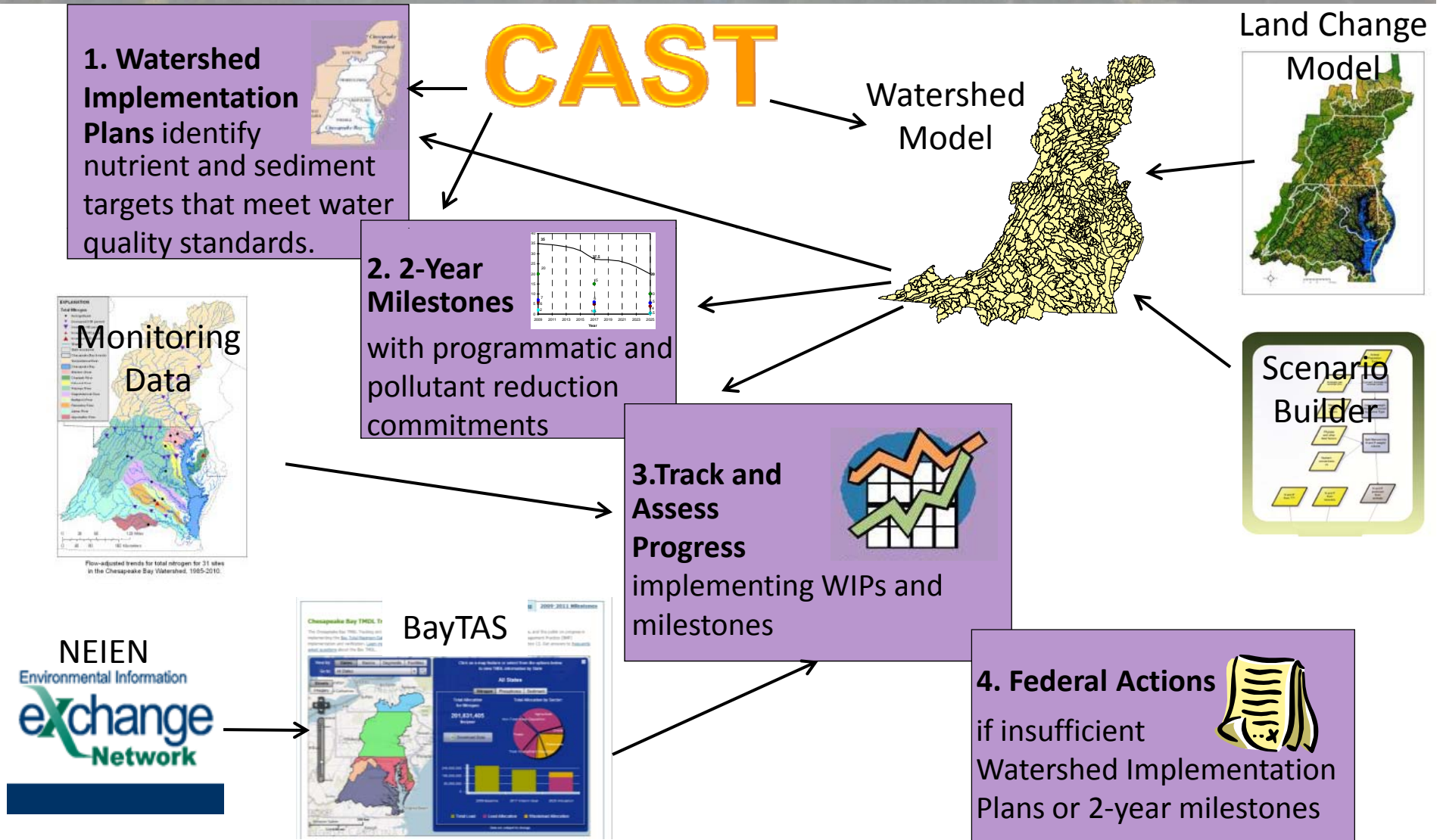


4. Federal Actions if insufficient Watershed Implementation Plans or 2-year milestones



Source: Chesapeake Bay TMDL Section 7

Framework Informed by Decision Support and Assessment Tools



Who Is the Lead?

Deliverable	Proposed Lead
Midpoint Assessment Priorities	Water Quality Goal Implementation Team (WQGIT)
Midpoint Assessment Guiding Principles	Principles' Staff Committee, with input from WQGIT and Management Board
Midpoint Assessment Deliverables	CBP Partnership. Specific roles for Workgroups, Modeling Team, etc.
2-Year Milestones	Bay Jurisdictions, Federal Agencies
Phase III Watershed Implementation Plans	Bay Jurisdictions, with input from local partners
Evaluation & Oversight of WIPs and Milestones	U.S. Environmental Protection Agency
Any Possible Revisions to Bay TMDL	U.S. Environmental Protection Agency

Note: Partnership members in addition to the lead may contribute to deliverables

Working Draft of Schedule (Dates Subject to Change)

- Input for the midpoint assessment from WQGIT, WQGIT Workgroups, Modeling Workgroup, others
 - Identification of topics (August 2012)
 - Priorities (September 18, 2012)
- Partnership development of Guiding Principles:
 - August and September: Discussion and feedback solicited from WQGIT
 - September 12: Discussion and feedback solicited from Management Board
 - September 27: Deadline for Management Board comments on Principles
 - Fall, TBD: Introduce Guiding Principles to PSC
 - Key question: will these Principles help the Partnership set priorities?
- October 9 WQGIT call:
 - WQGIT approval of October 22-23 agenda
- October 15: Materials available for October 22-23 meeting
- WQGIT Meeting to set priorities, flesh out schedule and develop work plan for midpoint assessment (October 22-23, 2012)
 - Use of draft versions of Guiding Principles to scope extent of the midpoint assessment
- PSC approval of the Guiding Principles (Winter 2013)

Working Draft of Schedule (Dates Subject to Change)

- BMP expert panel and workgroup findings and recommendations (2012 and on)
- As appropriate, refinements to decision support tools (2012 and on)
- Partnership testing of these refinements and, as appropriate, tool modifications in response to this testing (Partners have suggested at least 6 months)
- Development of Phase III Planning Targets, as necessary
- Development of draft and final Phase III WIPs that will guide implementation between 2018 and 2025, upon receipt of Phase III WIP planning targets
 - Some Partners have indicated need 18 months between completion of any model updates and submission of Phase III WIPs
 - In 2010 letter, EPA stated draft Phase III WIPs due June 1, 2017 and final due November 1, 2017
- EPA revisions, as appropriate, to the Bay TMDL

Working Draft of Guiding Principles (see attachment; subject to change)

1. Keep the focus on implementation and maintain stable tracking and reporting through 2017 (parallel tracks)
2. Enhance decision support and assessment tools to enable successful engagement of local partners
3. Incorporate verification of practices into existing accountability tools and reporting protocols
4. Address emerging issues that may impact current strategies and future plans
5. Prioritize midpoint assessment actions and adaptive management to ensure Phase III WIPs meet water quality goals

Workgroup Priorities and Relation to Guiding Principles

- See Attachment WG MPA Priorities_9.24.12.pdf and Priority Input by Principle_9.21.12.xls
- Workgroups have similar priorities
- Most priorities address to Principle 2, enabling successful engagement with local partners, and Principle 4, addressing emerging issues
- Many priorities address multiple principles
- Before October 22, Chesapeake Bay Program modeling team will estimate level of effort associated with Workgroup priorities

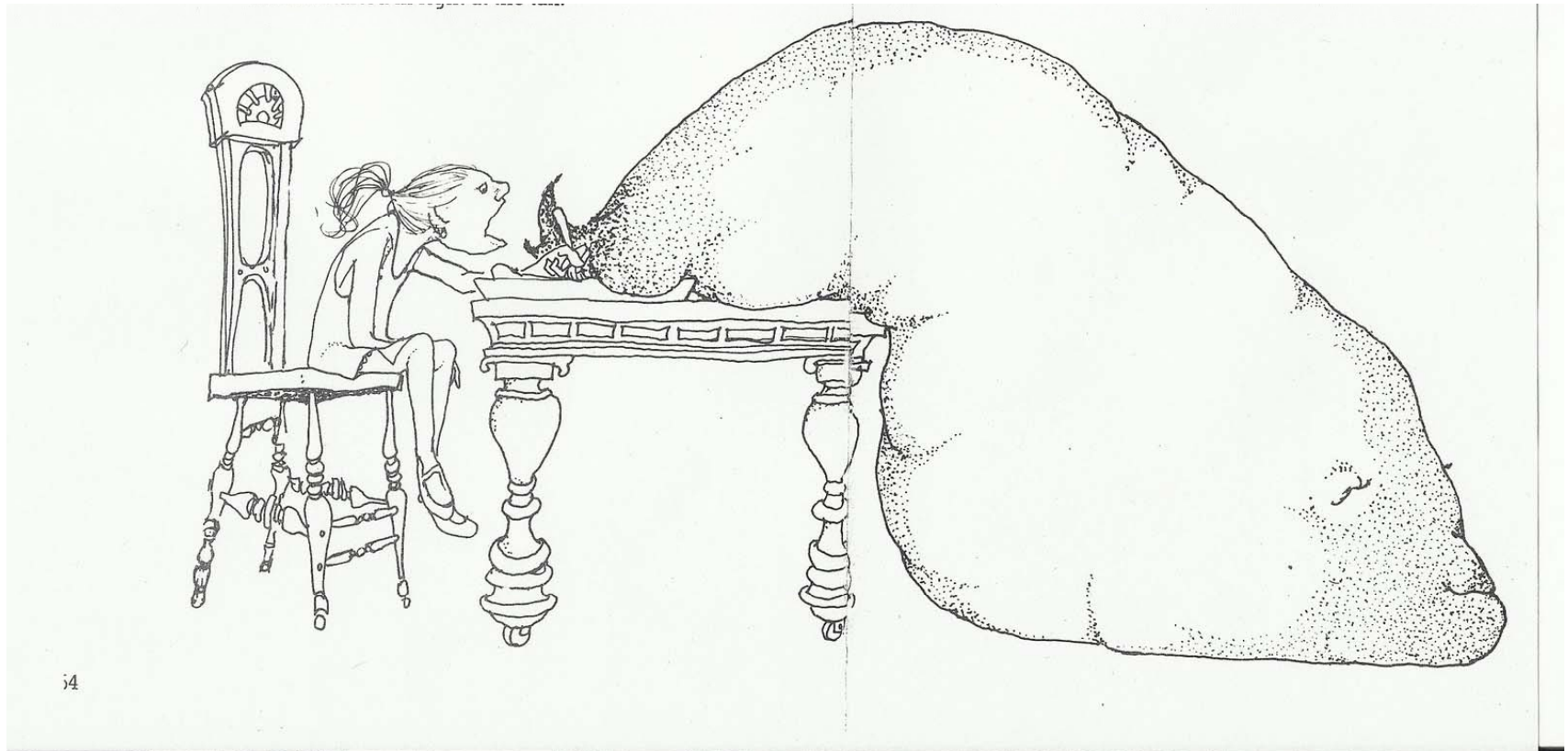
Suggested Agenda Items for October 22-23 Meeting

- Stage-setting questions:
 - What barriers to implementation need to be addressed to help meet 60% by 2017 goal and/or in the midpoint assessment for the Phase III WIPs?
 - Revisit answers to other upfront questions discussed today, as needed
- Discuss Workgroups' priorities
 - Panel of Workgroup Chairs present priorities
 - WQGIT members discuss whether and how to move forward with these priorities (see next slide)
- What does the WQGIT need to communicate to the PSC?
- How should the WQGIT communicate issues related to the midpoint assessment to our partners and to the public?
- Recap and decisions on next steps
- Remember: We aren't going to answer all questions regarding the midpoint assessment. Our goal is to have a path forward.

WQGIT Discussion Would Answer:

- Do priorities address barriers to implementation?
- How do the priorities align with the Guiding Principles?
- Roughly speaking, how much of a difference would it make in load, expected reductions, or implementation decisions in each state? (speaking generally)
- What resources and how much time would it take to address this priority?
- Are there downsides to this priority, such as generating confusion with changing numbers?
- What would happen if this change were not made as part of the midpoint assessment?
- Based on the above, does the WQGIT agree this should be address in the midpoint assessment?
- If yes, what are the next steps, who is taking them on, and by when? Provide dates by which workgroups, others would come back to WQGIT with more fleshed out work plans

Midpoint Assessment: One Bite at a Time



We aren't going to answer all questions regarding the midpoint assessment by October 23. Our goal is to have a path forward.

Feedback Requested from WQGIT:

- Are these the right questions to be asking before and at October 22-23?
 - What do we not need to address?
 - What questions are missing?
- Do you agree with some of the preliminary answers provided today?
 - If not, what do we need to revisit?
- What (materials, background, resources) do you need to help prepare and experience a productive meeting?

An aerial photograph of a large body of water, likely a lake or bay, surrounded by dense, forested land. The water is a deep blue, and numerous sailboats with white sails are visible, clustered in some areas and scattered in others. The surrounding land is covered in lush green trees, with some areas showing signs of autumnal change. The overall scene is serene and scenic.

**Many Thanks to the
Ad Hoc Planning Team**