

# P5.3 Potential Updates

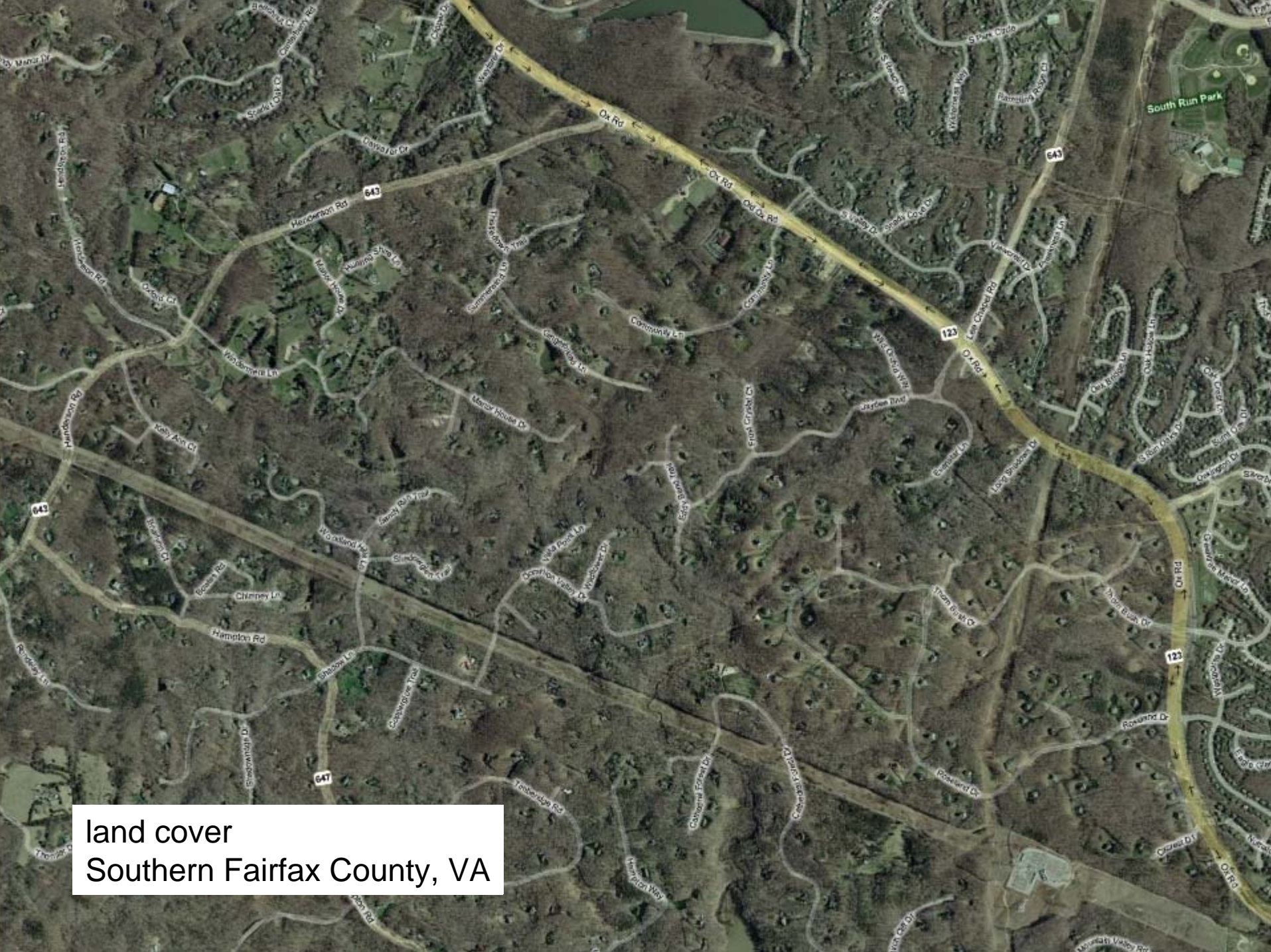
WQGIT

5/10/10

Gary Shenk

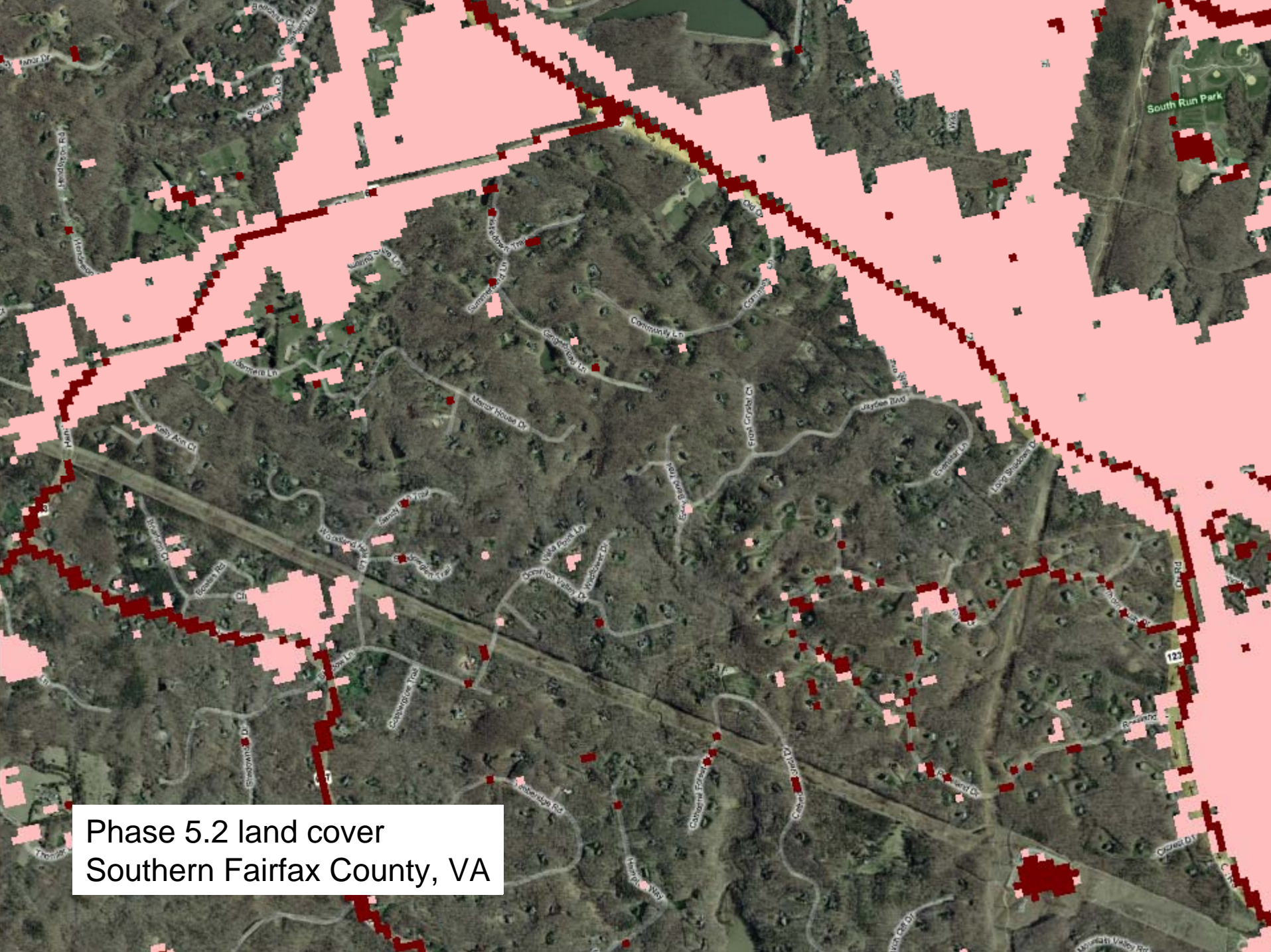
# Changes already agreed

- Updated land use with more complete urban coverage
- Modified nutrient management for areas with inorganic fertilizer applications
- Stop automatic transfer of manure
- Dispose of excess manure in a sequence determined by the states



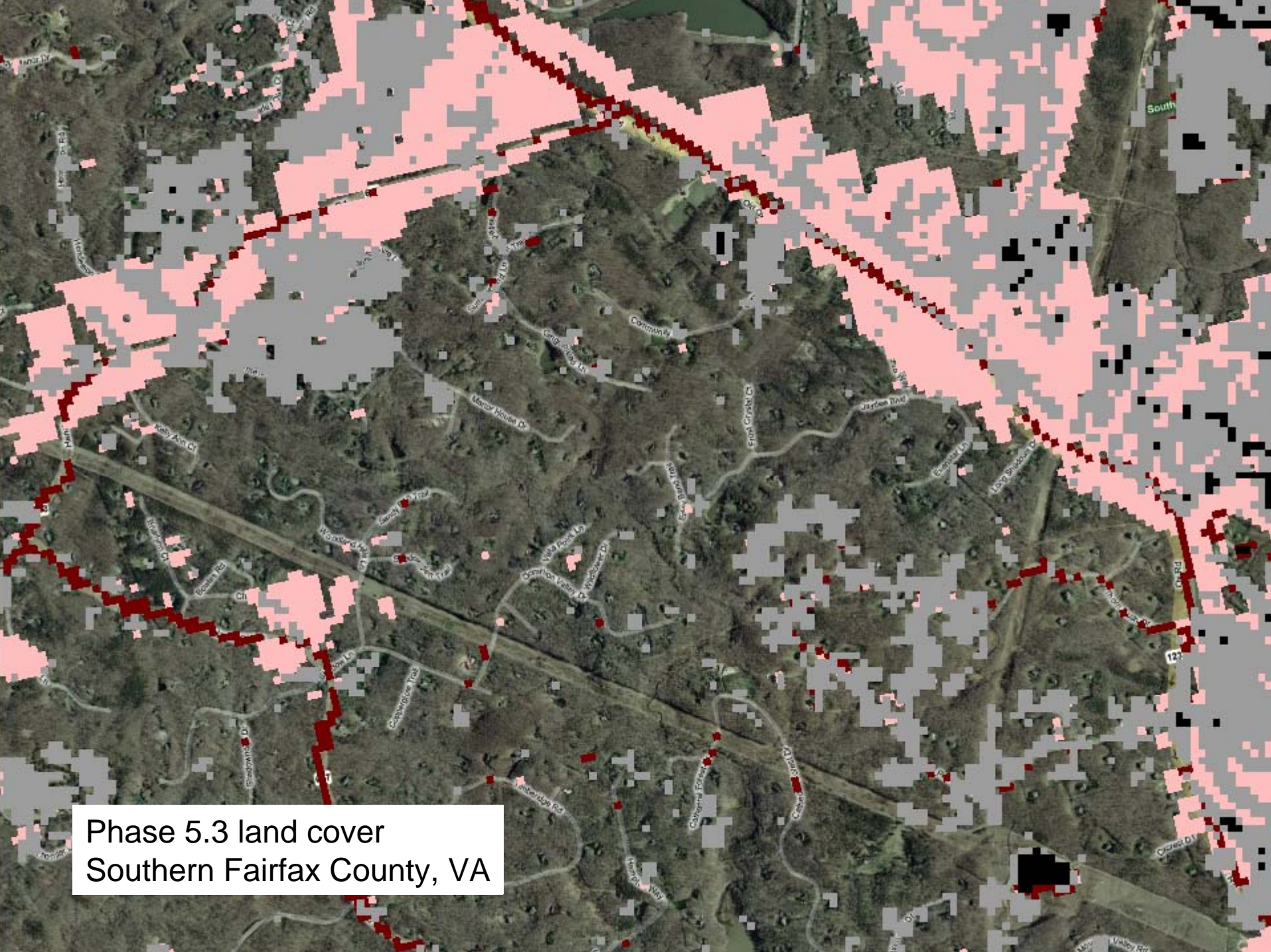
land cover  
Southern Fairfax County, VA





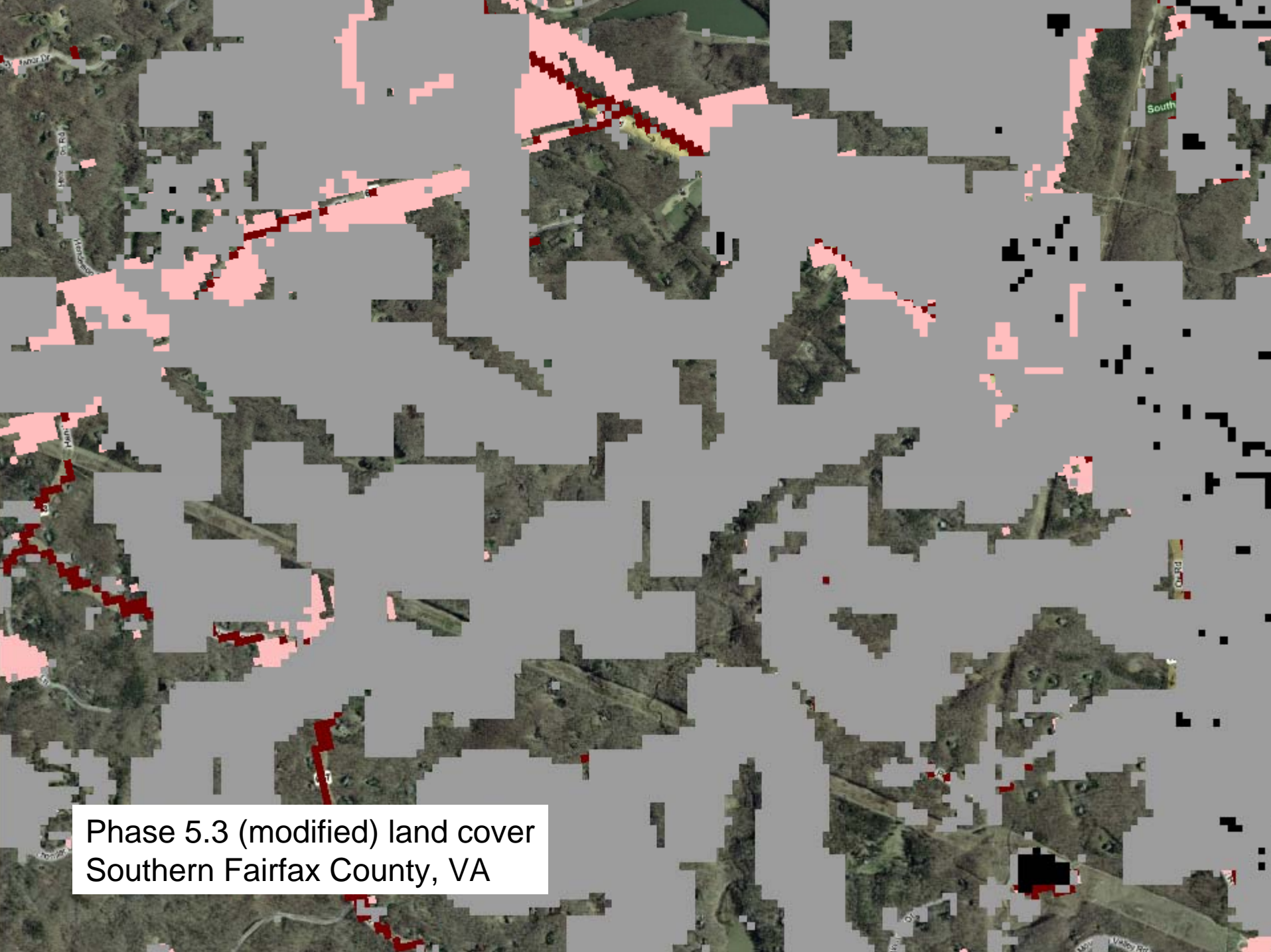
Phase 5.2 land cover  
Southern Fairfax County, VA





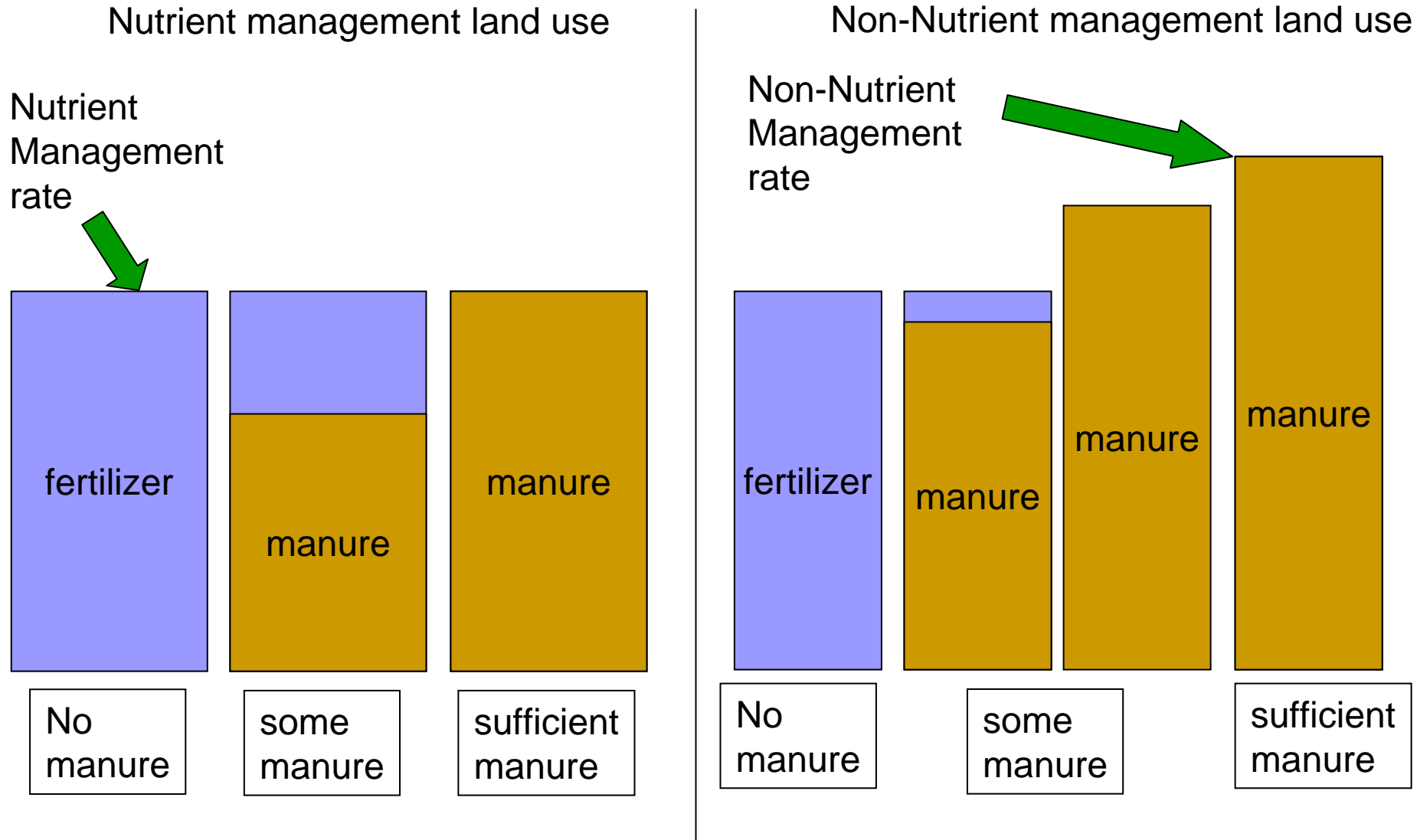
Phase 5.3 land cover  
Southern Fairfax County, VA



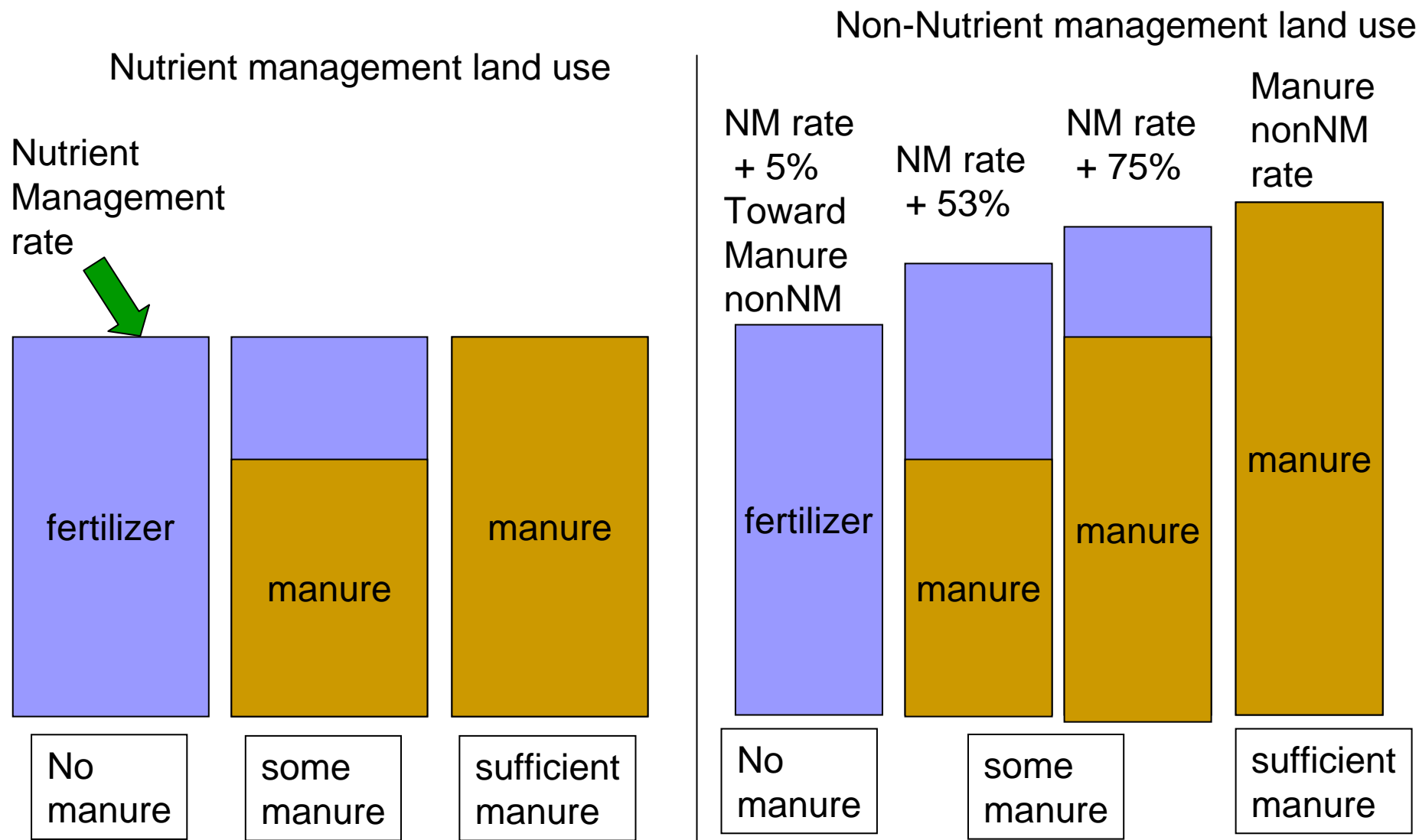


Phase 5.3 (modified) land cover  
Southern Fairfax County, VA

# Fertilizer in non-NM - Current



# Fertilizer in non-NM - Proposed





# Newly Submitted Issues

- Ag WG
  - Forestry WG
  - Urban WG
  - Watershed Technical WG
- 
- Issues affecting calibration – due now
  - Issues affecting scenarios – due mid-June
  - Issues for future study – no deadline

# AgWG Recommendations - Calibration

- Articulation of nutrient management
- Articulation of manure disposal sequence
- Revision of the pasture management BMP values (next presentation)
- Revision of traditional cover crop BMP values
  - Could not reach defensible recommendation
- Revision of E3 scenario
  - Discussed Next WQGIT



AgWG

Recommendations – Calibration  
State Guidance for Excess  
Manure Distribution

State	Received response	Varies geographically	Landuses	Max rate(s)	Increment(s) increased
WV	✓	X	lwm	4	1, 2
			hwm	4	1, 2
			hyw	4	1, 2
			pas	6	2, 3
NY	✓	X	hyw	1.2	0.2
			pas	2	1
			hwm	4	0.8, 2.2
			lwm	6.1	0.7, 0.2, 2, 2.1, 0.1
PA	✓	X	lwm, hwm, hyw, pas, alf	10	0.01
MD	✓	X	hom, hwm, lwm, hyo, hyw, alf, pas	4.5	0.5, 1.5
VA	✓	✓	lwm, hwm, hyw, pas, alf	3, 6	0.25, 0.5
DE	-	-	-	-	-



# AgWG recommendations – Scenarios

- Revision of continuous no-till BMP value
- Revision of Enhanced nutrient management BMP value
- Revision of commodity cover crop BMP effectiveness value
- All to work through process by 6/15

# Forestry Work Group

- Already Implemented
  - Urban Tree Canopy
  - Avoided deforestation
- Significant changes to existing BMP definitions
  - Forest Management Plans
  - Combination Forest Buffer and wetland
  - Targeted Buffers
- Have not reached decision stage yet



# Urban Workgroup

- Endorsement of the land use change
- Requested new definition of E3 for urban
  - To be discussed at the next WQGIT

# Wastewater Workgroup

- Will submit some modifications to nonsignificant industrial wastewater treatment facility input data prior to recalibration
- Discussing E3 definitions for industrial wastewater treatment plants and CSOs
  - To be discussed at the next WQGIT

# WTWG Recommendations

- Endorsement of land use and nutrient management changes
- E3 definition changes
  - To be discussed at the next WQGIT

# WTWG Issues Raised

- Vegetative Cover
  - Cover over 100%
  - Degraded stream corridor too high
  - Large differences between segments
- High Range of EOS loading
- TSS loads and delivery factors
  - Error found in code affecting 2007, 2009, and trib strategy, but not No Action, calibration, or E3. New loads on the web



# WQGIT decisions

- Decisions previously made
  - Land use
  - Nutrient Management
  - Manure disposal
- To be discussed
  - Pasture management
  - E3 definitions
- Not fully developed
  - Forestry BMPs
  - Data Issues