

Follow-Ups to the April 2010 Face-To-Face Meeting

Water Quality Goal Implementation Team
Conference Call

April 12, 2010

Lewis Linker and the CBP
Modeling Team
linker.lewis@epa.gov

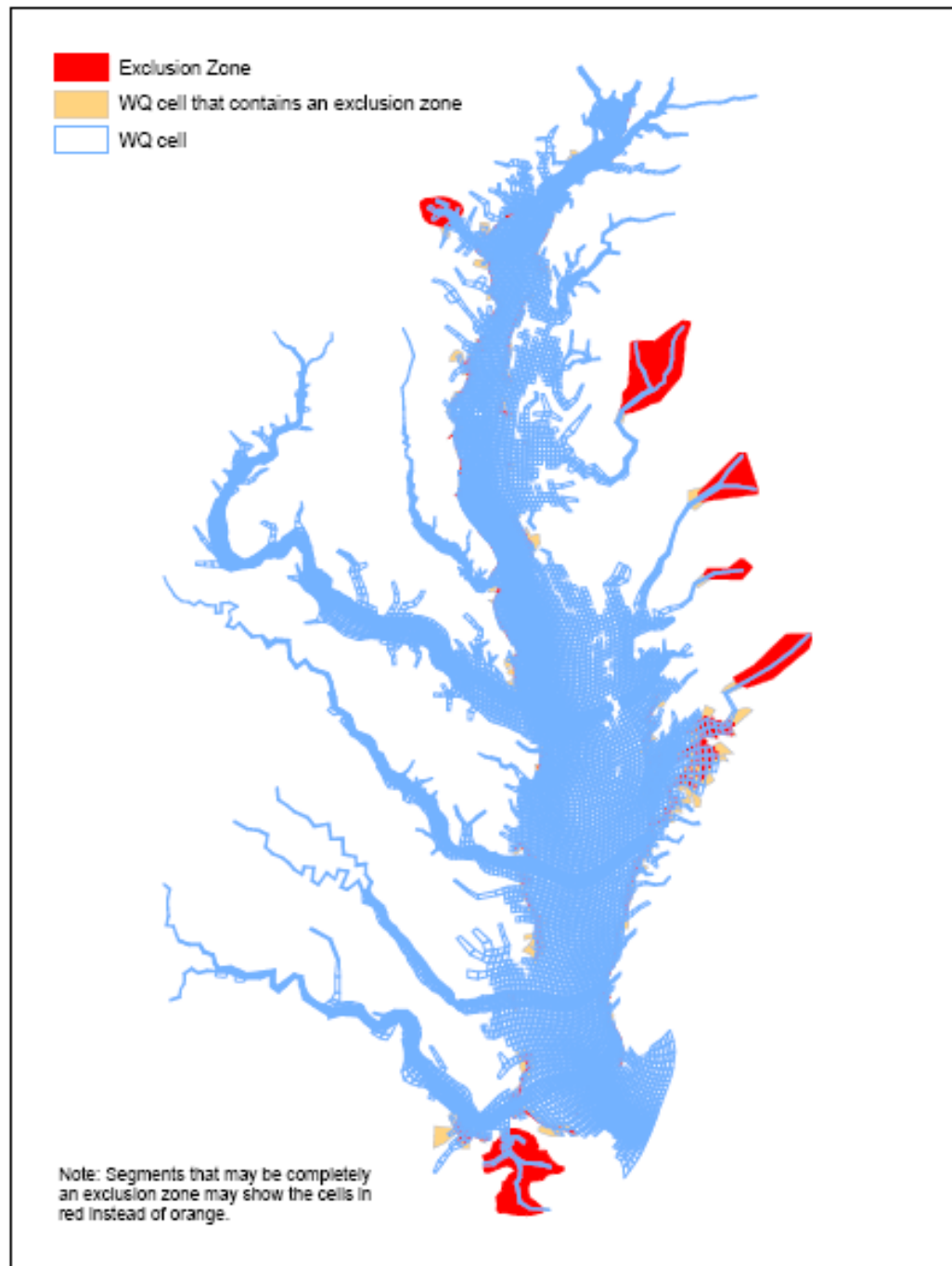




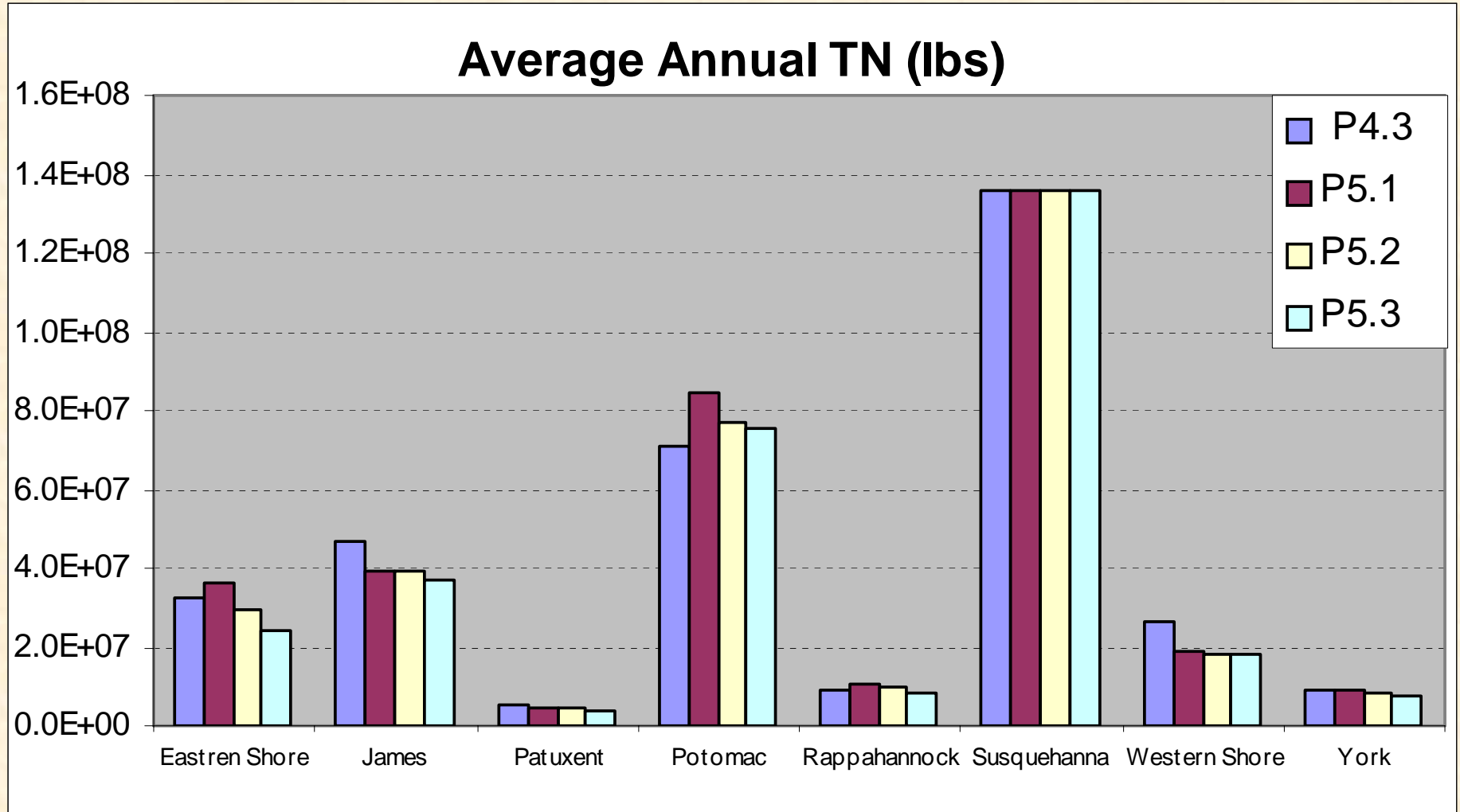
Follow-Up to the Clarity/SAV WQS

- Working to incorporate the SAV No-Grow areas into the clarity/SAV WQS.
- SAV No-Grow areas affect partially all of the main Bay CB segments and many areas of the Eastern Shore.
- Segments of entirely SAV No-Grow include the Choptank, Nanticoke, and Pocomoke Tidal Fresh CB segments and the “Elisabeths”

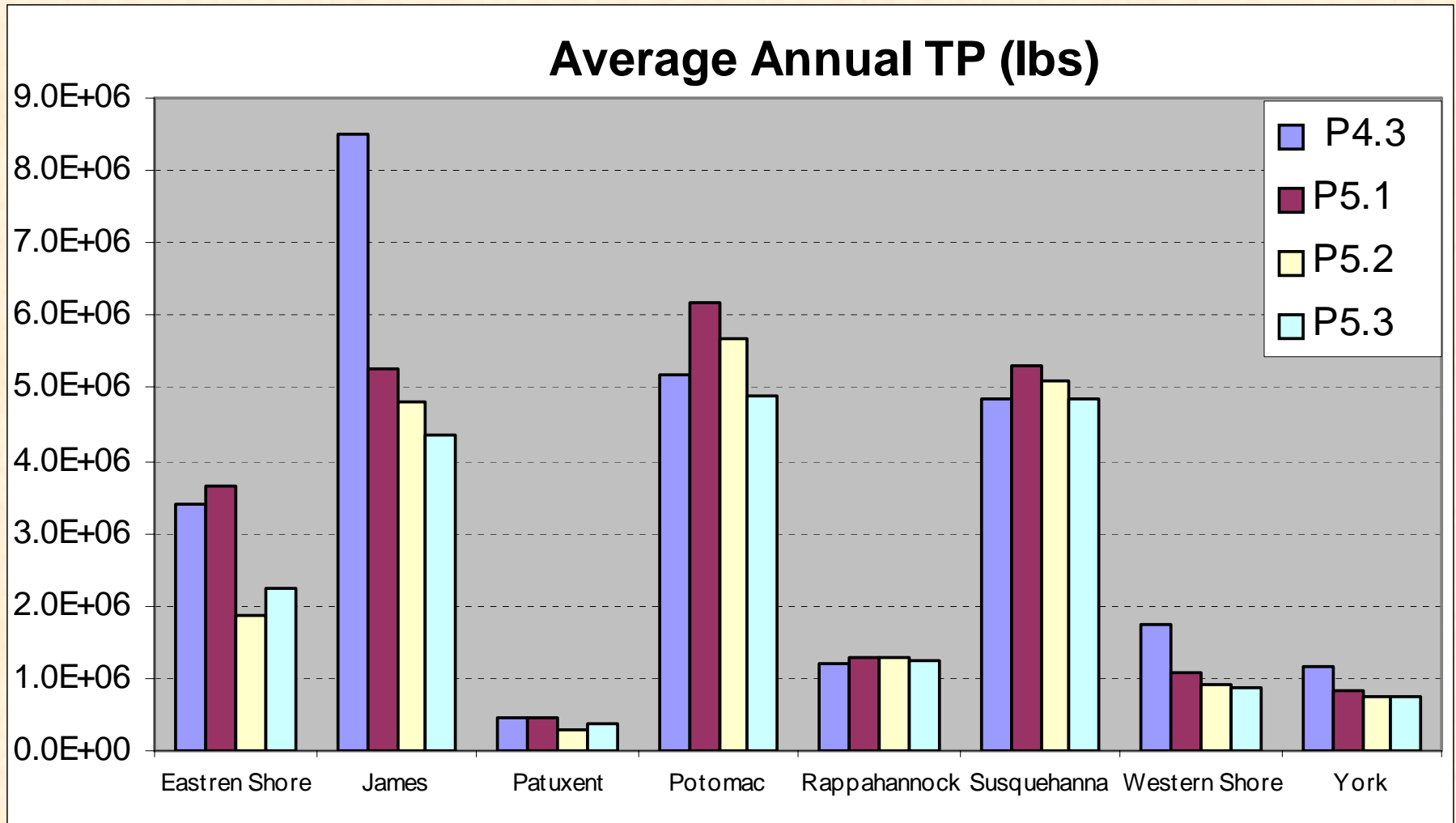
SAV –No Grow areas are here referred to as “exclusion zones” which either cover an entire WQSTM cells (red) or a portion of a WQSTM cell (yellow).



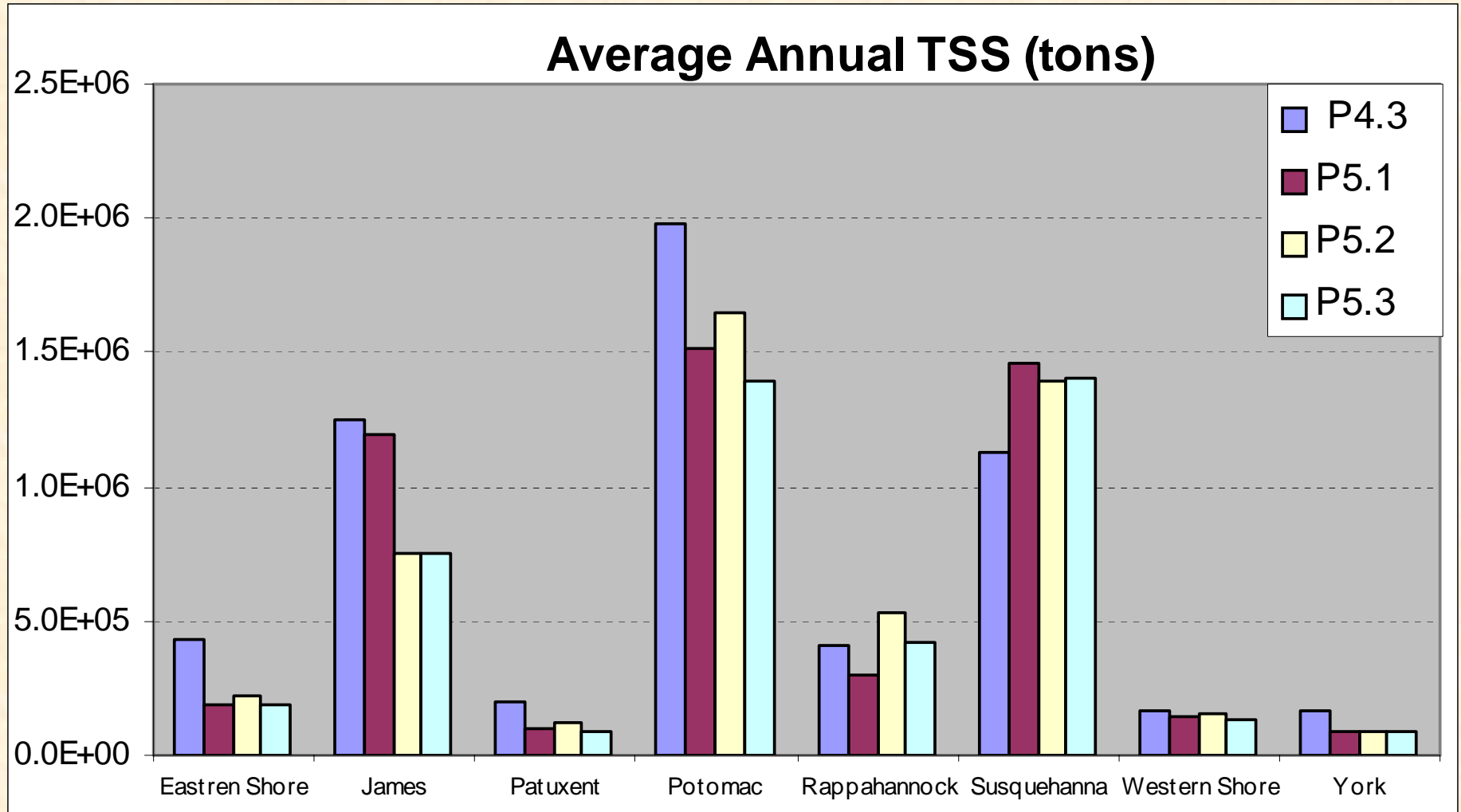
We Made an Error in Our April 5-6 Assessment of the Rappahannock Loads for Phase 5.3 TN, TP, & TSS.



We Made an Error in Our April 5-6 Assessment of the Rappahannock Loads for Phase 5.3 TN, TP, & TSS.



We Made an Error in Our April 5-6 Assessment of the Rappahannock Loads for Phase 5.3 TN, TP, & TSS.



Scenarios We're preparing for the PSC and Presented as
DO, Chlorophyll, and Clarity/SAV Stoplight Plots:

- 1985 Scenario - CoE ~ 420 TN, 28.4 TP
- Base Case Scenario - CBPO ~ 320 TN, 19.8 TP
- 2007 Scenario - CoE ~ 254 TN, 17.1 TP
- Loading Scenario - CBPO 209 TN, 13.8 TP
- Tributary Strategy Scenario - CBPO ~ 200 TN.
15 TP
- Target Load Scenario - CBPO 190 TN, 11.8 TP
- E3 - CBPO ~ 138 TN, 12.0 TP