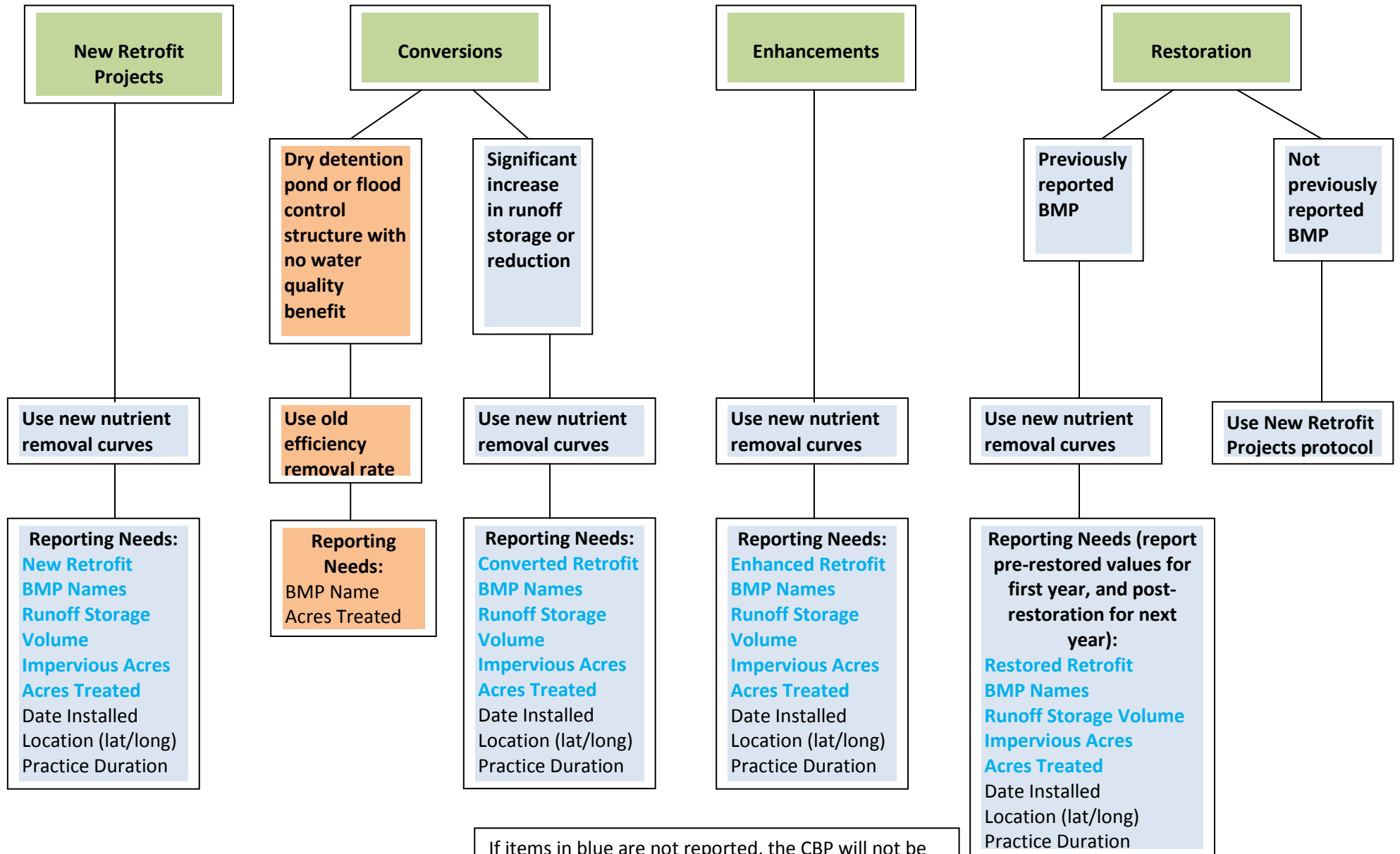


Stormwater Retrofit Project Reporting Recommendations



If items in blue are not reported, the CBP will not be able to credit any practice using the new state stormwater performance standards protocol. If only blue items are reported, the CBP will only be able to credit the state with a default of 0.5 inches of runoff treatment volume (still under review by the Watershed Technical Workgroup).

Stormwater New or Re-Development Project Reporting Recommendations

New Development Project

Non-Conforming Project

Served by a single BMP

Use old efficiency removal rate

Reporting Needs:
BMP Name
Acres Treated

Served by multiple BMPs

Use new nutrient removal curves

Reporting Needs:
New Development BMP Names
Runoff Storage Volume
Impervious Acres
Acres Treated
Date Installed
Location (lat/long)
Practice Duration

Conforming Project

Use new nutrient removal curves

Reporting Needs:
New Development BMP Names
Runoff Storage Volume
Impervious Acres
Acres Treated
Date Installed
Location (lat/long)
Practice Duration

Re-Development Project

Non-Conforming Project

Served by a single BMP

Use old efficiency removal rate

Reporting Needs:
BMP Name
Acres Treated

Served by multiple BMPs

Use new nutrient removal curves

Reporting Needs:
Re-Development BMP Names
Runoff Storage Volume
Disturbed Acres
Impervious Acres
Date Installed
Location (lat/long)
Practice Duration

Conforming Project

Use new nutrient removal curves

Reporting Needs:
Re-Development BMP Names
Runoff Storage Volume
Disturbed Acres
Impervious Acres
Date Installed
Location (lat/long)
Practice Duration

If items in blue are not reported, the CBP will not be able to credit any practice using the new state stormwater performance standards protocol. If only blue items are reported, the CBP will only be able to credit the state with a default of 0.5 inches of runoff treatment volume (still under review by the Watershed Technical Workgroup).