

FISHERIES INDICATORS UPDATES

Bruce Vogt, GIT 1 Coordinator
Management Board Meeting
November 21, 2013



OVERVIEW

- Management Board tasked the Fisheries GIT to review the following indicators and propose updates that align with current targets and management:

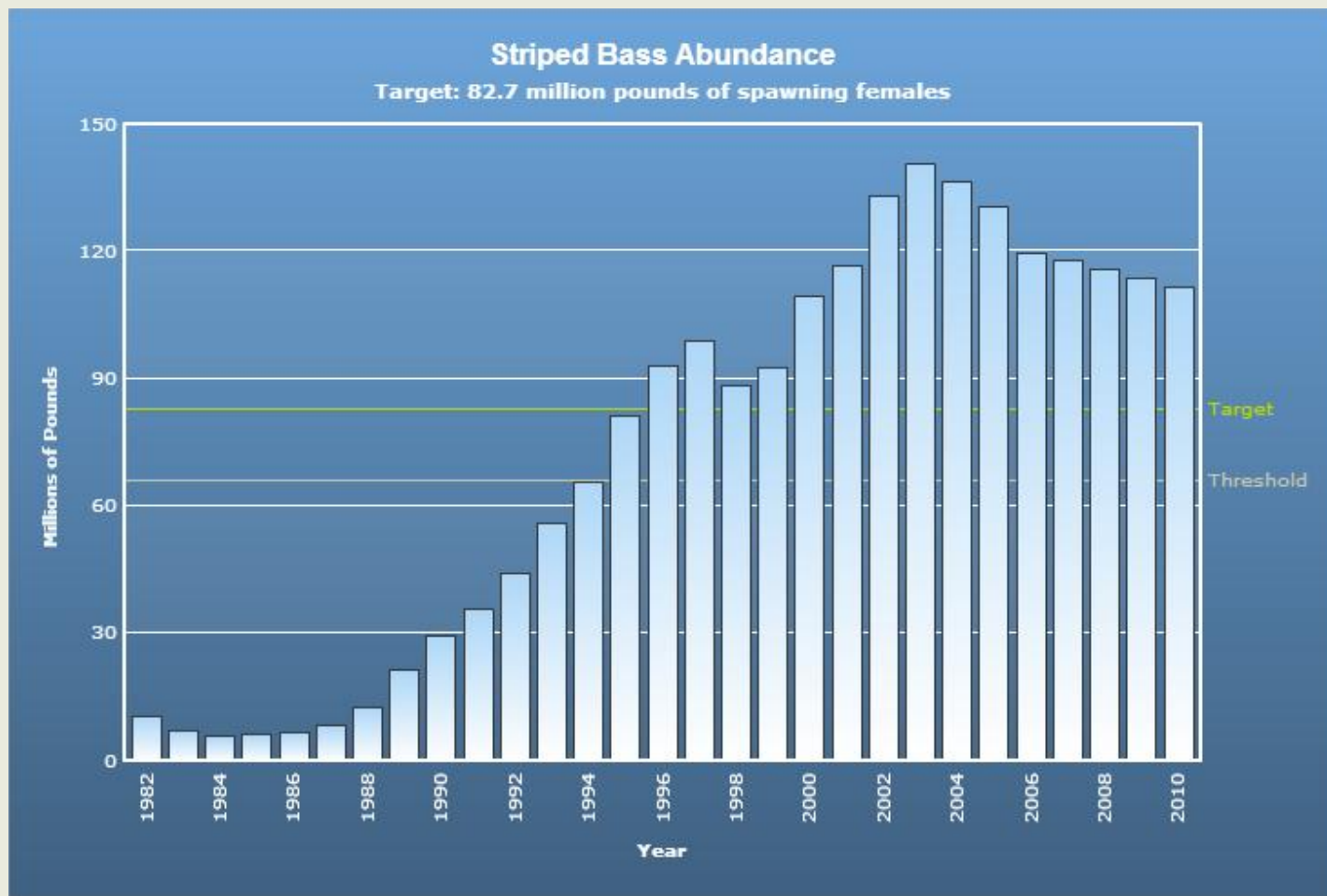
- 1. Striped Bass Abundance
 - 2. Juvenile Menhaden Abundance
 - 3. Native Oyster Abundance
 - 4. Restoring Oyster Reefs
- Bay Health
- Restoration

- Fisheries GIT Executive Committee discussed these indicators on their November 18th, 2013 call

STRIPED BASS

- Currently:
 - ASMFC data for Coastwide Female Spawning Stock Biomass
 - ASMFC Coastwide Fishing Targets and Overfishing Thresholds
- Concerns: striped bass are managed on a coastwide basis with no Bay-specific targets

STRIPED BASS



STRIPED BASS

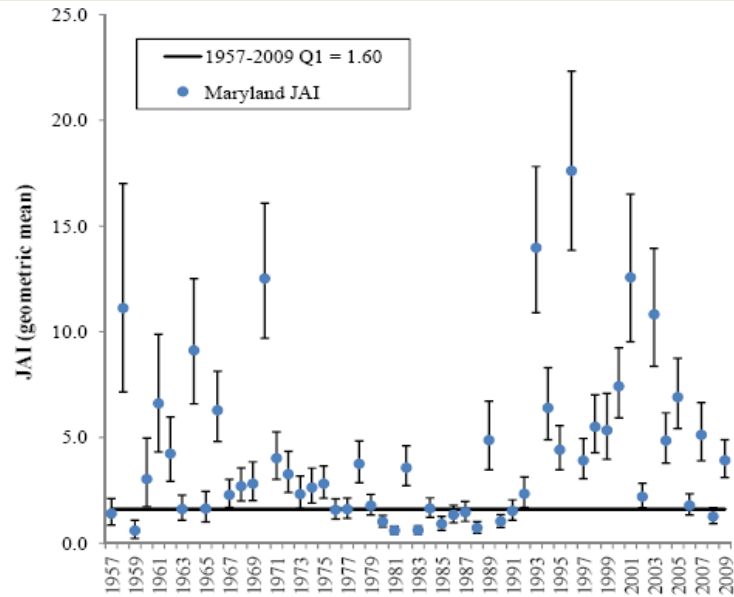


STRIPED BASS RECOMMENDATIONS

■ Proposal:

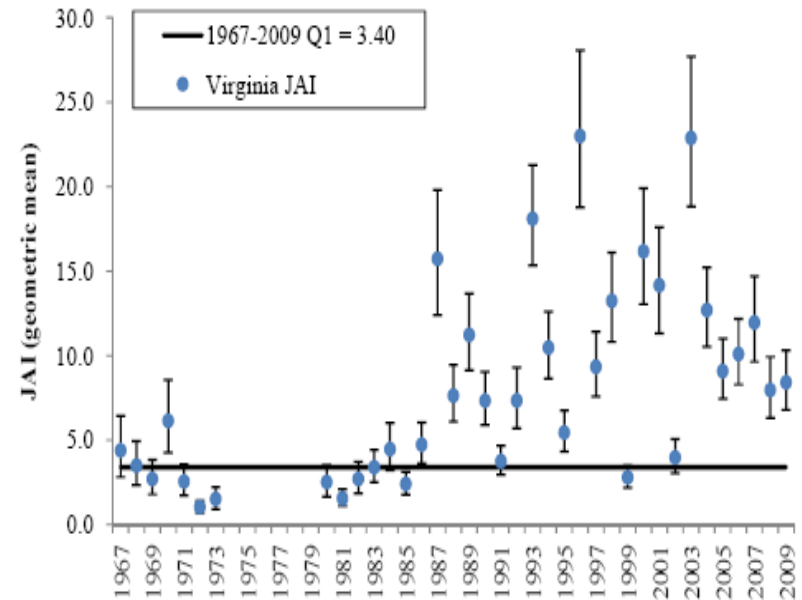
1. Maintain SSB and Management charts for the coastwide stock
2. Add MD and VA Juvenile Abundance Index charts for state-specific information
3. The Fisheries GIT will work with ASMFC and the jurisdictions to update the data when available

Maryland Juvenile Abundance Index



Source:
ASMFC

Virginia Juvenile Abundance Index

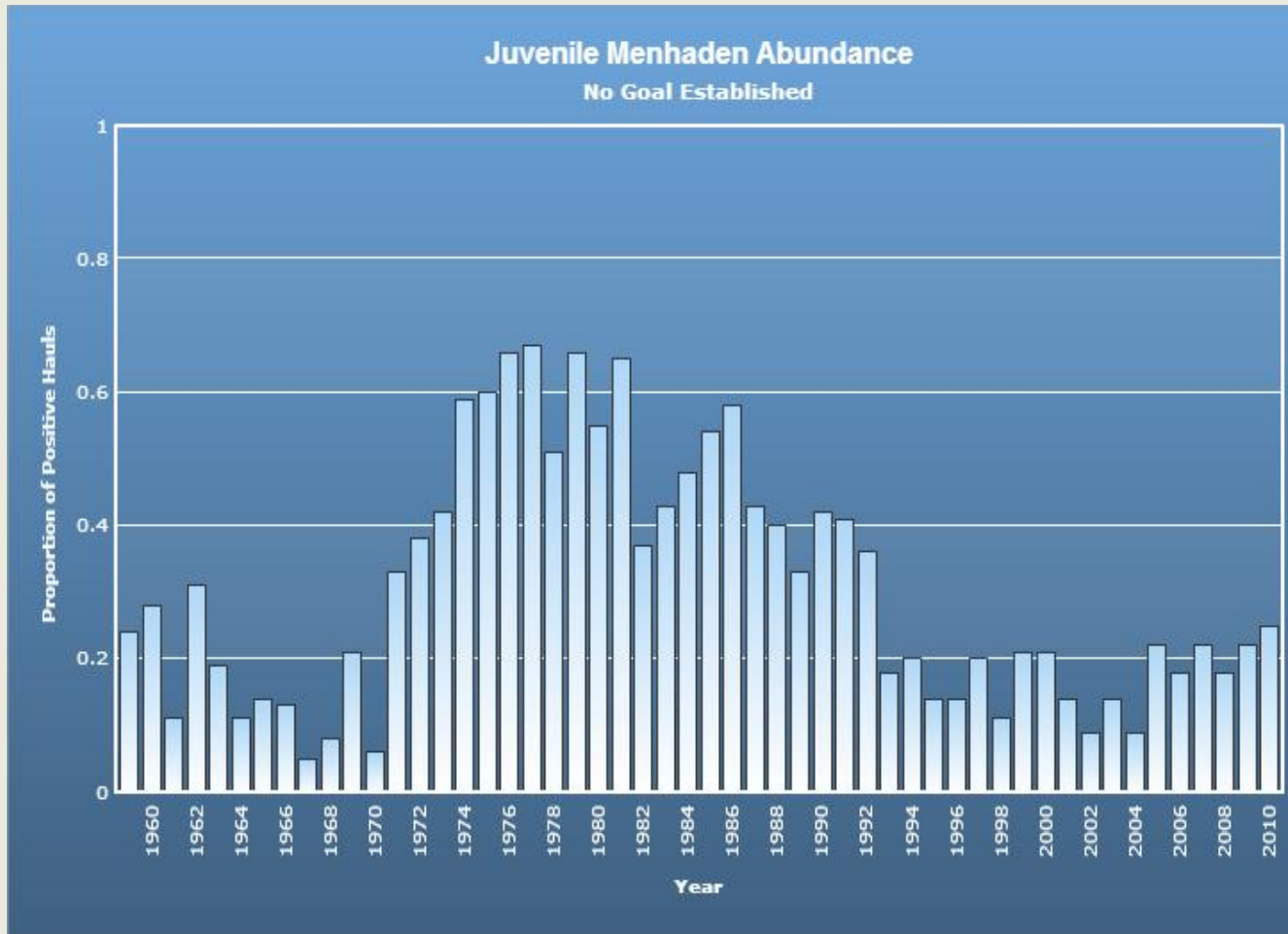


MENHADEN

- **Currently:**
 - Juvenile abundance data for MD
- **Concerns:** Menhaden are managed on a coastwide bases with no Bay-specific targets and the website lacks of VA data

MENHADEN

Maryland

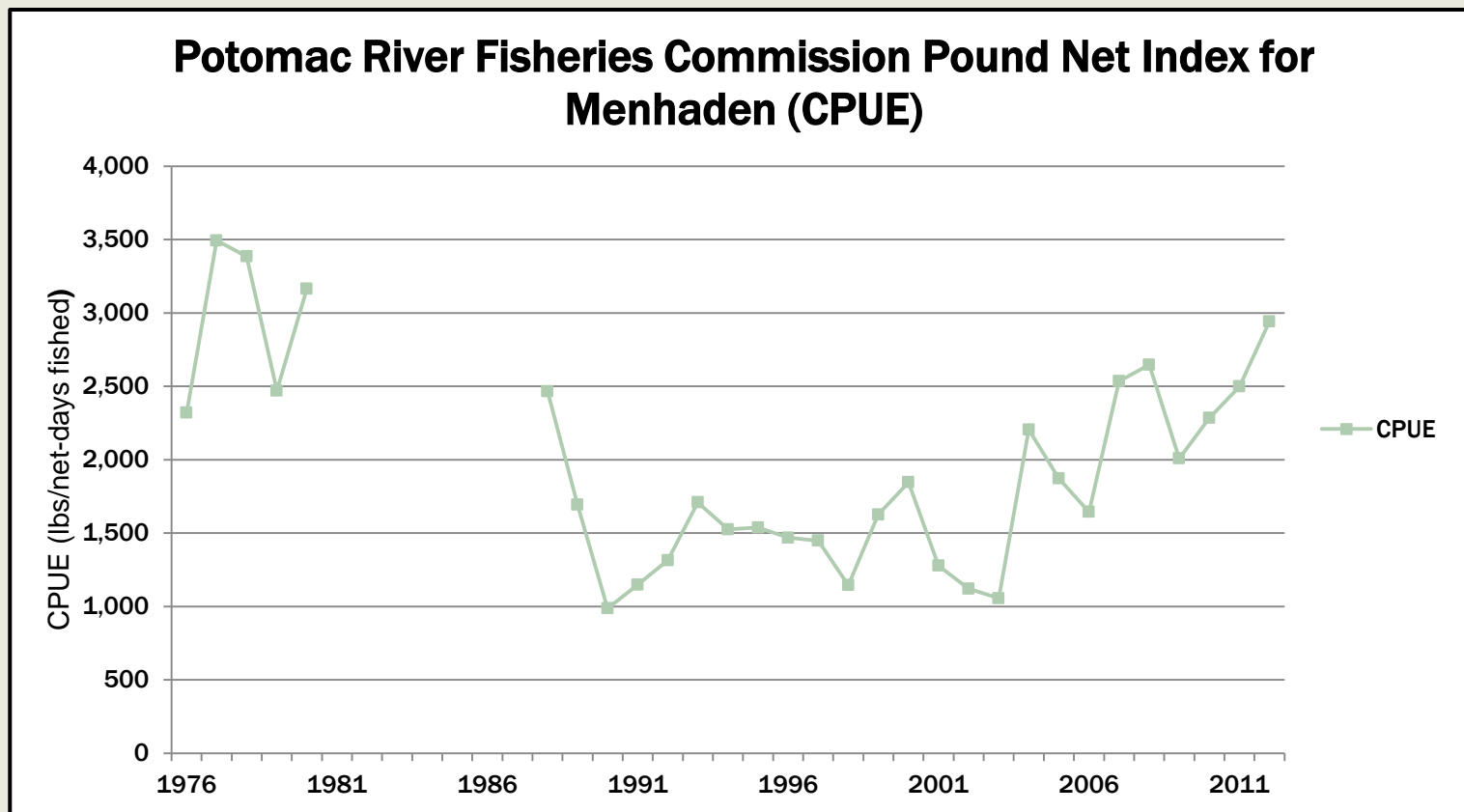


MENHADEN

■ Proposal:

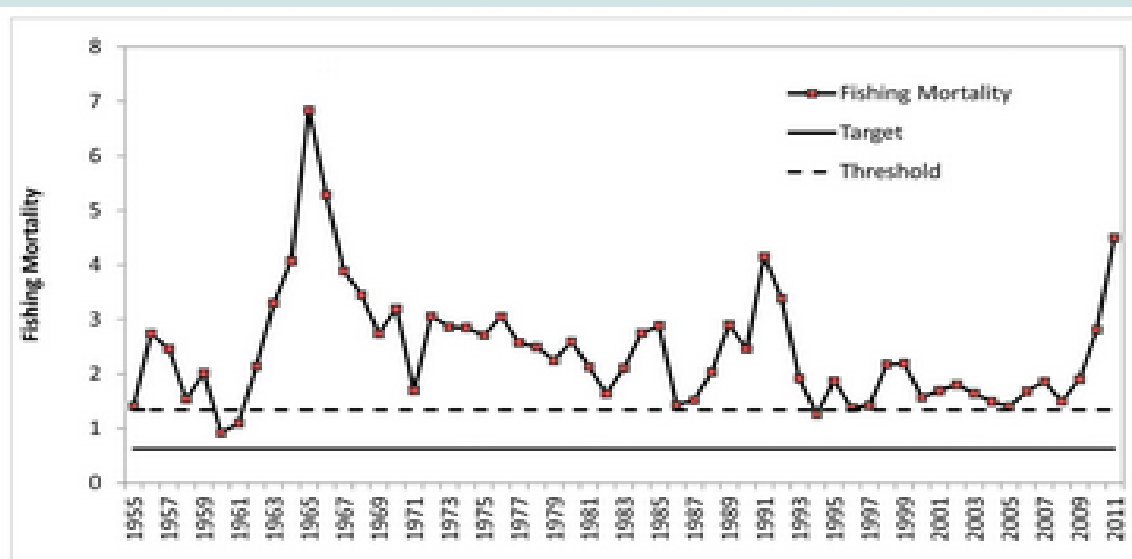
1. Remove the current MD abundance chart
2. Add Potomac River Fisheries Commission (PRFC) Pound Net Index for menhaden, which is used by ASMFC as a proxy for relative coastwide adult menhaden abundance
3. Add a management chart that shows the percentage removed by fishing, the removal target and overfishing threshold (similar to existing striped bass management chart)
4. The Fisheries GIT will work with ASMFC and PRFC to update the data when available

MENHADEN



MENHADEN

Coastwide Management Chart

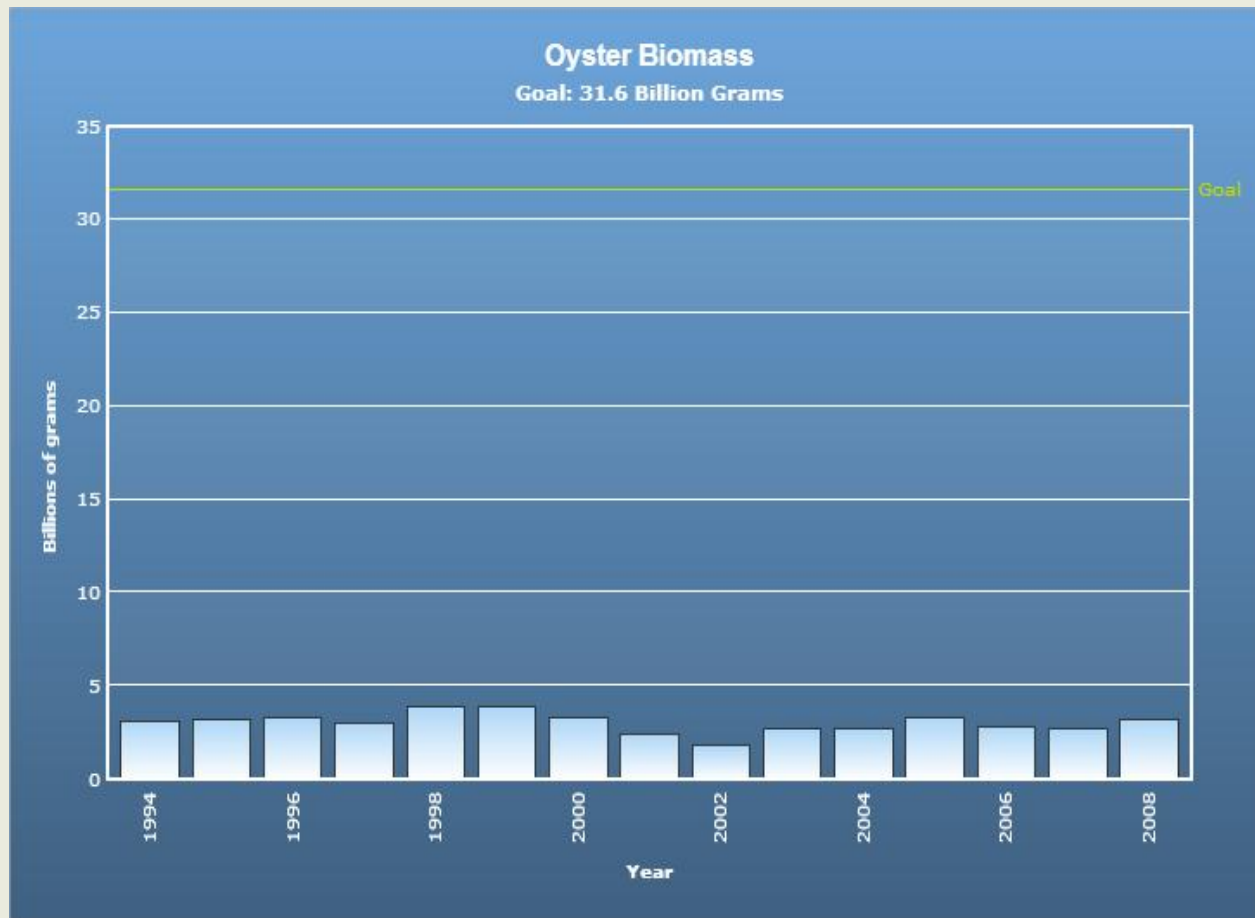


Atlantic menhaden fishing mortality (full F). Source: ASMFC Atlantic Menhaden Stock Assessment Update, 2012

NATIVE OYSTER ABUNDANCE

- Currently:
 - Oyster Biomass Chart with outdated goal of tenfold biomass increase (Chesapeake 2000)
- Concerns: Outdated goal and baywide oyster biomass is no longer used to determine oyster health

NATIVE OYSTER ABUNDANCE



NATIVE OYSTER ABUNDANCE

- **Proposal:**

- Remove the current biomass chart
- The focus for oysters will be developing an oyster restoration indicator to track the tributary restoration goal
- The Fisheries GIT Ex Comm will consider developing a new oyster health indicator in the future that could incorporate data on disease or spat set data from MD and VA

RESTORING NATIVE OYSTER REEFS

- **Currently:**
 - Restored reef acreage chart with outdated acreage goal for 2007-2010
- **Concerns:** Outdated goal and new tributary approach that will have specific plans and acreage goals for each tributary

RESTORING NATIVE OYSTER REEFS



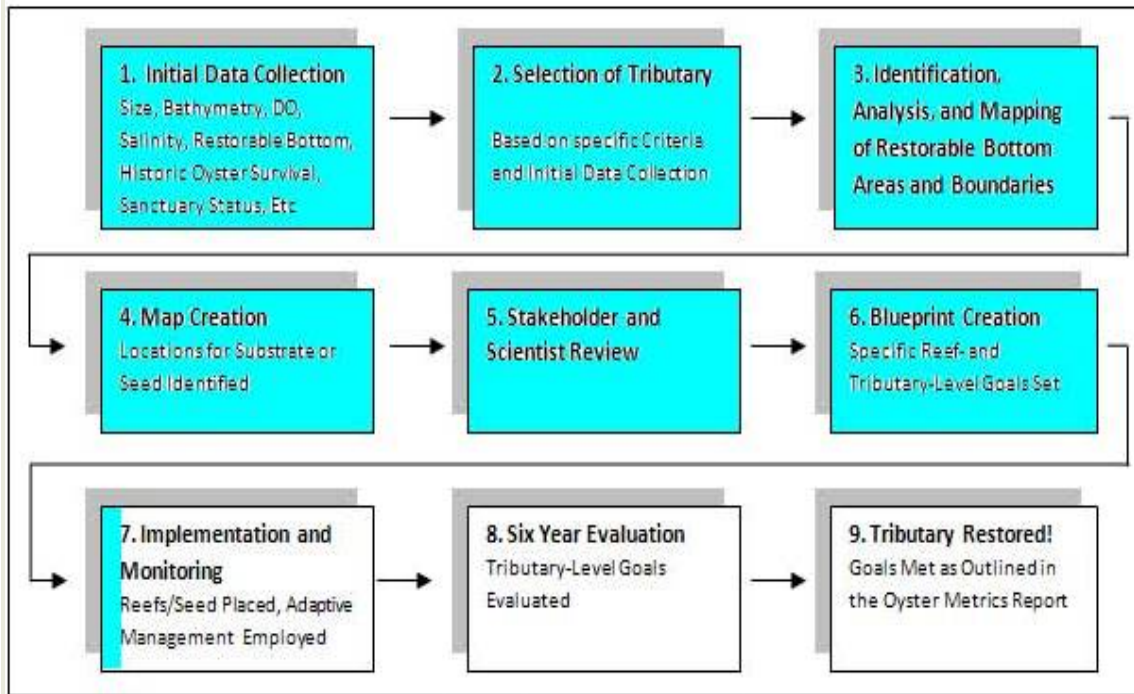
RESTORING NATIVE OYSTER REEFS

■ Proposal:

- Remove the current chart
- Develop a table that shows the steps to tributary restoration (plan, implementation, evaluate) and shows the identified tributaries and their progress along these steps.
- For tributaries in the implementation phase, include acreage chart and acreage targets
- Use the text on the webpage to explain how restoration goals have changed from acreage to tributary approach.
- In the interim, use the indicator page to explain the switch to the tributary approach while the indicator is in development through 2014

RESTORING NATIVE OYSTER REEFS

Tributary planning steps...



...to build in sample
chart below with
progress for each
tributary

Source: NOAA Chesapeake Bay Office

	Step 1	Step 2	Step 3...
Trib A			
Trib B			
Trib C			

RESTORING NATIVE OYSTER REEFS

Tributary-specific acreage targets (sample)

