



Overview for Watershed Technical Workgroup

October 1, 2012

Megan Thyng | EPA Chesapeake Bay Program Office

What is BayTAS?

- Chesapeake **Bay** TMDL **T**racking & **A**ccounting **S**ystem
- Password-protected, online system to track and report progress towards implementation of the TMDL
- Initially released January 28, 2011
- Public accesses data in BayTAS through public-facing website (*ChesapeakeStat*)

Why was BayTAS developed?

- Executive Order 13508 Strategy, 05/12/10:
'Strategy for Protecting and Restoring the Chesapeake Bay Watershed'
- Settlement agreement (CBF vs. EPA)
 - Begin to implement tracking and accounting system within 30 days of final TMDL publication
 - Inform EPA, jurisdictions, and the public about wasteload and load allocations
 - Be publicly accessible

BayTAS tracking capabilities

- Current (based on model v.5.3.0)
 - TMDL allocations
 - Permit status info for significant wastewater facilities
- Future (based on model v.5.3.2)
 - very near Future
 - Phase II WIP planning targets
 - Annual progress run data
 - 2-year milestone load targets
 - Potential future enhancements
 - Additional permit tracking
 - Programmatic milestones
 - BMP implementation
 - Trading and offset transactions
 - Permit compliance schedules

BayTAS tracking capabilities

- **Current (based on model v.5.3.0)**
 - **TMDL allocations**
 - **Permit status info for significant wastewater facilities**
- **Future (based on model v.5.3.2)**
 - very near Future
 - Phase II WIP planning targets
 - Annual progress run data
 - 2-year milestone load targets
 - Potential enhancements
 - Additional permit tracking
 - Programmatic milestones
 - BMP implementation
 - trading and offset transactions
 - permit compliance schedules

Current tracking capabilities

- Contains final TMDL allocations for TN, TP, TSS (Appendix Q)
 - Segment, basin, state, sector, and facility-level tracking of loads
 - Delivered and edge-of-stream loads for wastewater
- Tracks if a significant wastewater facility has incorporated WLA as an enforceable NPDES permit limit

State TMDL Loads

State	2017 Interim Goal			TMDL 2025 Delivered Loads			2009 Baseline Delivered Loads			WLA Reserve			LA Reserve		
	TN	TP	TSS	TN	TP	TSS	TN	TP	TSS	TN	TP	TSS	TN	TP	TSS
DC	2,531,060	106,673	19,447,809	2,318,343	120,947	11,158,121	2,855,381	86,378	32,003,135	0	0	0	0	0	0
DE	3,419,722	282,370	60,605,097	2,950,920	261,808	57,823,022	4,147,086	315,358	64,778,567	0	0	0	0	0	0
MD	43,303,203	2,941,908	1,280,121,061	39,085,845	2,715,051	1,217,898,864	49,814,473	3,305,081	1,394,023,803	0	0	11,789,933	0	0	0
NY	9,613,201	657,918	310,448,009	8,771,948	565,702	292,960,727	10,947,653	801,589	337,266,496	0	0	0	0	0	0
PA	86,781,967	3,278,259	2,236,513,766	73,938,737	2,932,469	1,983,784,083	108,353,052	3,967,331	2,628,416,085	0	0	0	568,253	75,518	4,133,674
VA	58,312,659	6,010,714	2,757,850,281	53,413,365	5,354,043	2,578,901,969	67,211,928	7,154,001	3,255,651,119	0	0	0	0	0	132,683,985
WV	5,498,609	680,033	325,779,488	5,452,247	593,211	310,880,752	5,933,202	833,216	378,382,315	0	0	0	96,119	0	17,735,424
NonTidal-Atdep	0	0	0	15,700,000	0	0				0	0	0	0	0	0
TOTAL	209,460,421	13,957,876	6,990,765,511	201,631,405	12,543,232	6,453,407,539	249,262,775	16,462,955	8,090,521,521	0	0	11,789,933	664,371	75,518	154,553,082

BayTAS tracking capabilities

- Current (based on model v.5.3.0)
 - TMDL allocations
 - Permit status info for significant wastewater facilities
- **Future (based on model v.5.3.2)**
 - **very near Future**
 - **Phase II WIP planning targets**
 - **Annual progress run data**
 - **2-year milestone load targets**
 - Potential enhancements
 - Additional permit tracking
 - Programmatic milestones
 - BMP implementation
 - trading and offset transactions
 - permit compliance schedules

Coming (very) soon...

- Tracking data in model version 5.3.2
 - Based on 8/1 planning targets and Phase II WIPs
 - Scales: watershed, state, basin, segment, sector, and facility
 - Includes loading information for:
 - 1985, 2009 baseline
 - 2010 , 2011 progress
 - 12-13 milestone targets
 - 2017, 2025 planning targets
 - Future annual progress run and 2-year milestone data
- Minor corrections (seg names, permit numbers, *etc.*)
- 2010 TMDL data will continue to be stored, reported in both BayTAS and ChesapeakeStat

BayTAS tracking capabilities

- Current (based on model v.5.3.0)
 - TMDL allocations
 - Permit status info for significant wastewater facilities
- **Future (based on model v.5.3.2)**
 - **very near Future**
 - Phase II WIP planning targets
 - Annual progress run data
 - 2-year milestone load targets
 - **Potential enhancements**
 - Additional permit tracking
 - Programmatic milestones
 - BMP implementation
 - Trading and offset transactions
 - Permit compliance schedules

What are BayTAS' data sources?

- CBP
 - CBP wastewater database (state-submitted data)
 - NPSBMP data flow (through CBP NEIEN node; state-submitted data)
 - Watershed model output
- OECA
 - PCS & ICIS-NPDES databases
- R3 Philadelphia
 - R3 Permit Tracking System (PTS) database

BayTAS demo

BayTAS development site

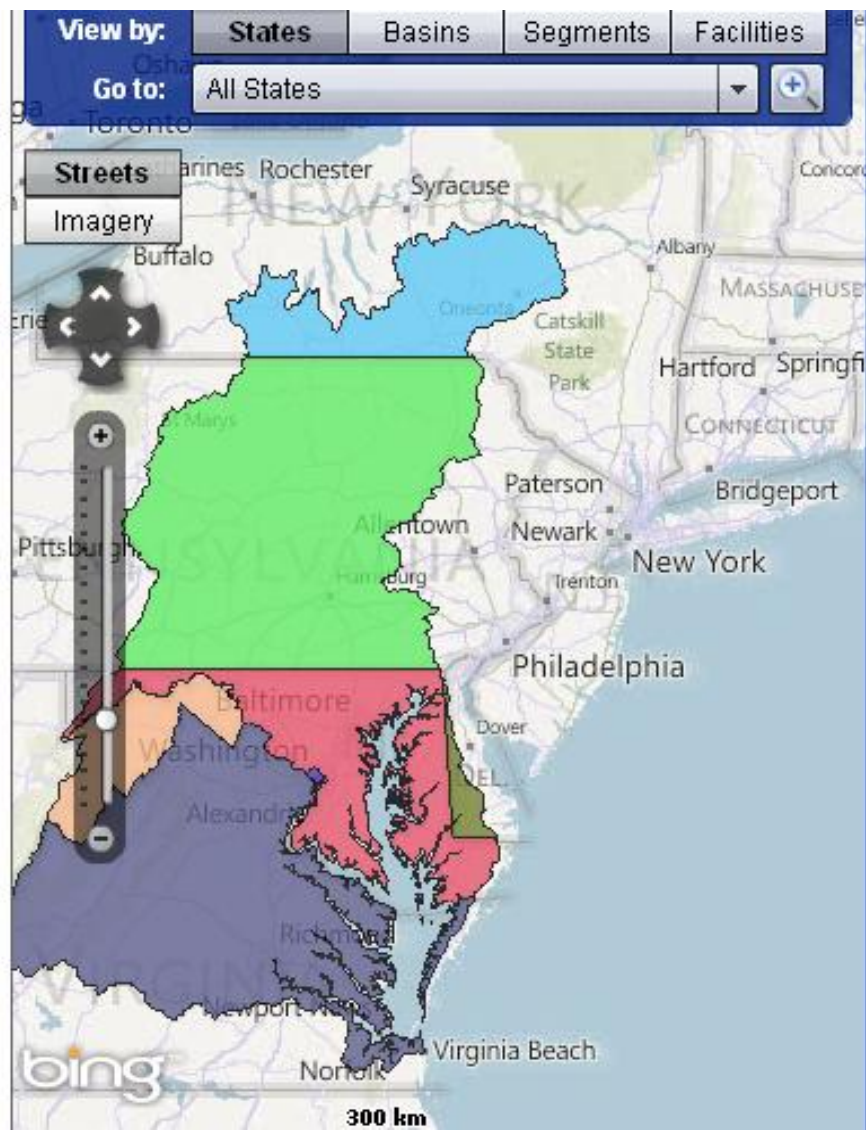
BayTAS test site

Chesapeake*Stat* View

Note that all data shown in following slides are not 'real' – they are for demo purposes only

Chesapeake Bay TMDL Tracking and Accounting System (BayTAS)

The Chesapeake Bay TMDL Tracking and Accounting System (BayTAS) was developed to inform EPA, the Bay Jurisdictions, and the public on progress in implementing the [Bay Total Maximum Daily Load \(Bay TMDL\)](#). Future versions of BayTAS will include reporting of Best Management Practice (BMP) implementation and verification. [Learn more about BayTAS](#) and the [terminology of the TMDL](#) in the glossary found in Section 13. Get answers to [frequently asked questions](#) about the Bay TMDL.



Click on a map feature or select from the options below to view TMDL information by State

All States

Nitrogen

Phosphorus

Sediment

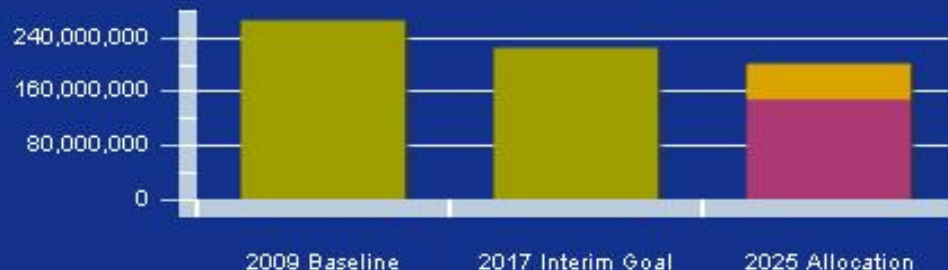
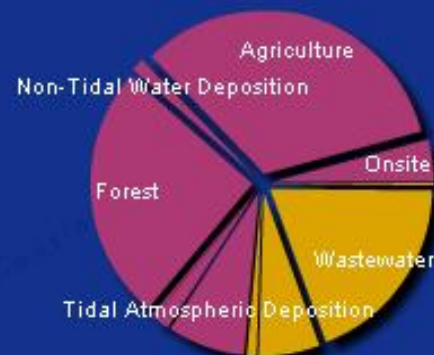
Total Allocation
for Nitrogen:

**201,631,405
lbs/year**



Download Data

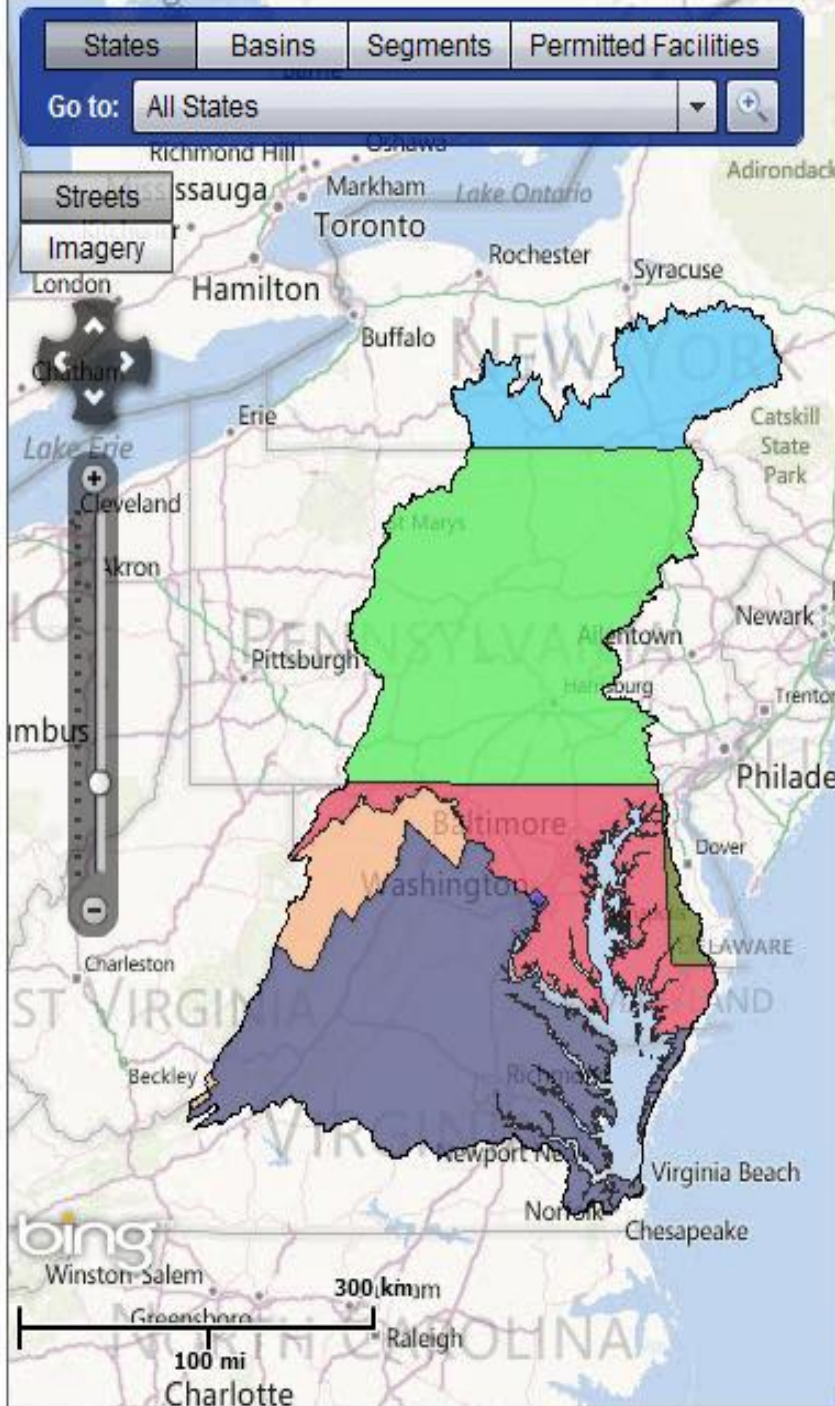
Total Allocation by Sector:



Total Load

Load Allocation

Wasteload Allocation



Click on a map feature or select from the options below to view TMDL information by State

All States

☐ Show TMDL Allocations ☒ Show Progress towards Phase II WIP Planning Targets

Nitrogen

Phosphorus

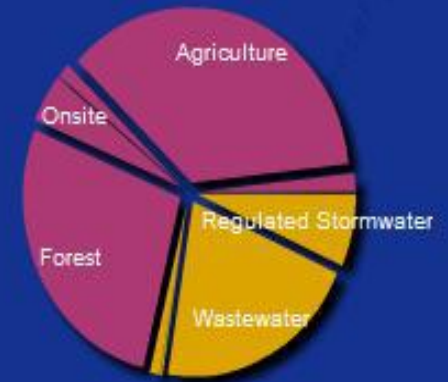
Total Suspended Solids

Total 2025 Planning Target
for Nitrogen:

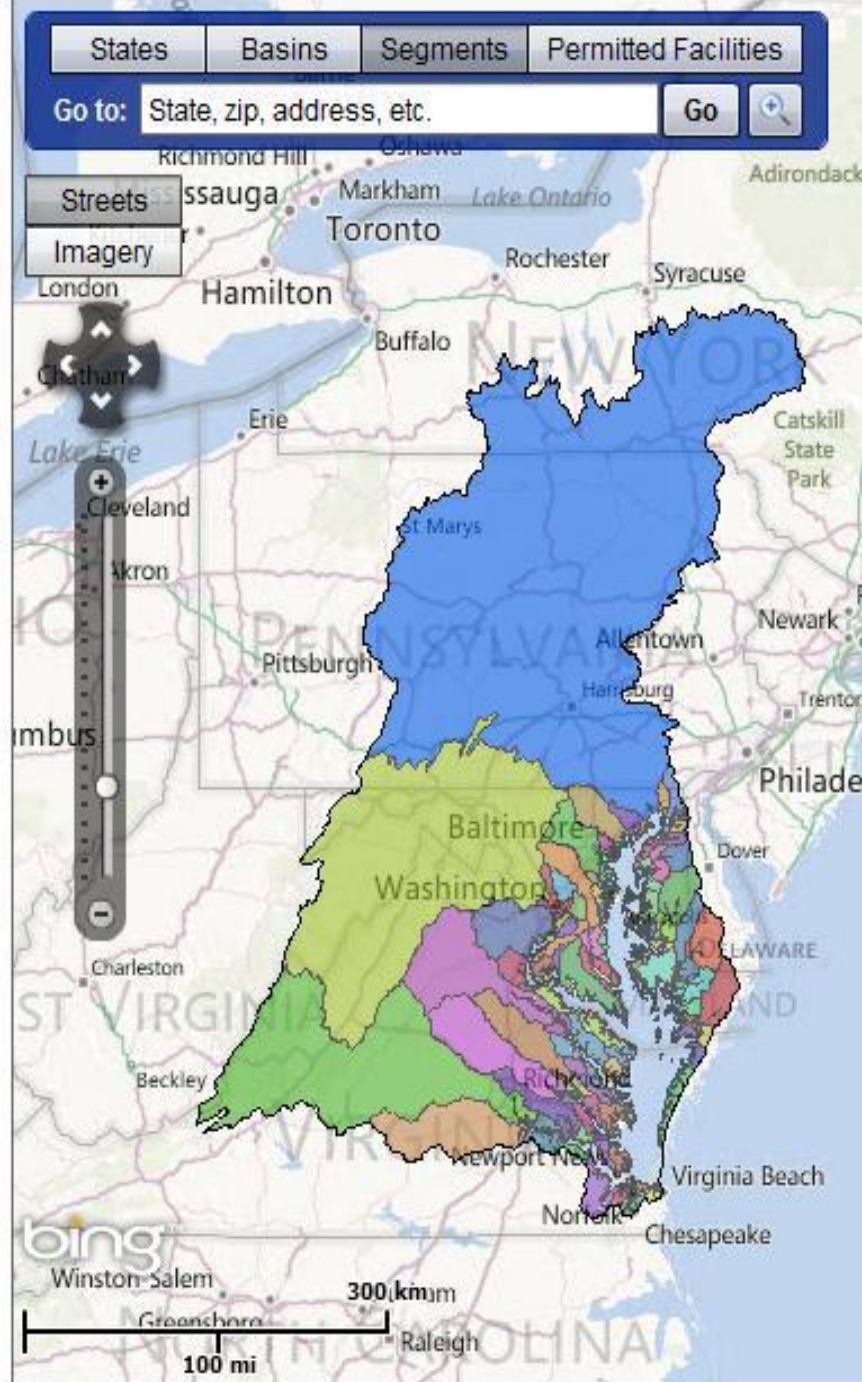
207,251,015
lbs/year

Download Data

Total Nitrogen
2025 Planning Target by Sector:



Loads are calculated based on practices reported by the Jurisdictions and the 5.3.2 Watershed Model.



Resources

BayTAS (need user account to access):

<http://baytas.chesapeakebay.net>

Chesapeake*Stat*:

<http://stat.chesapeakebay.net>

EPA Chesapeake Bay TMDL:

<http://www.epa.gov/chesapeakebaytmdl/>

Contact Information

Megan Thyng, BayTAS Project Manager

thyng.megan@epa.gov

410-267-5786