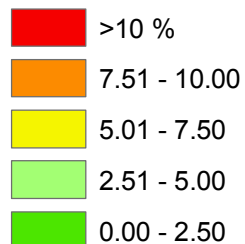


Impervious Surfaces - 2000

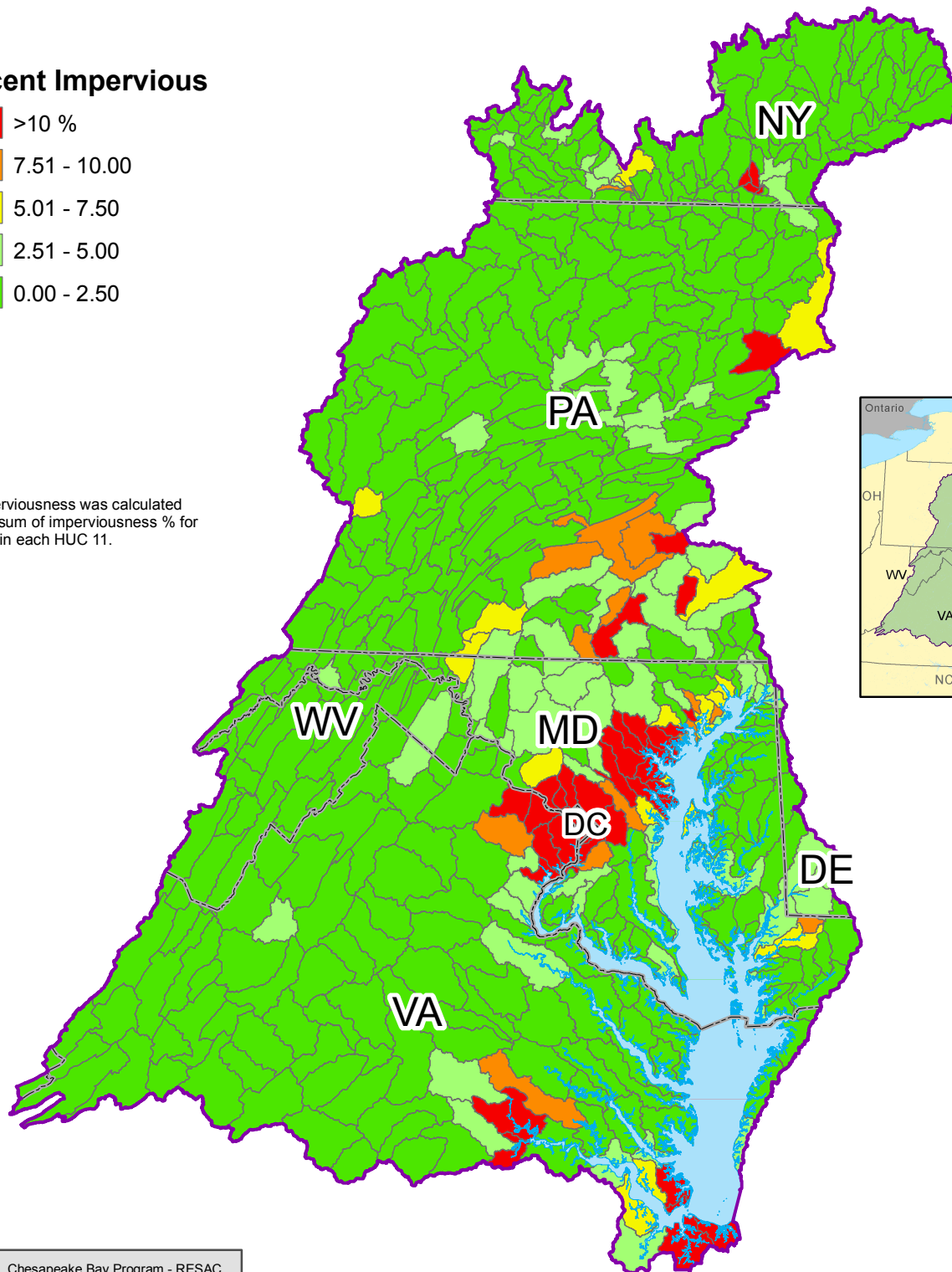
Chesapeake Bay Watershed



Percent Impervious



Percent imperviousness was calculated as the zonal sum of imperviousness % for all 30m cells in each HUC 11.



Data Sources: Chesapeake Bay Program - RESAC
Impervious Surface Cover 2000

For more information, visit www.chesapeakebay.net
Disclaimer: www.chesapeakebay.net/termsofuse.htm

