

Long-Term Flow-Adjusted Trends for Total Nitrogen for 32 Sites in the Chesapeake Bay Watershed, 1985-2009

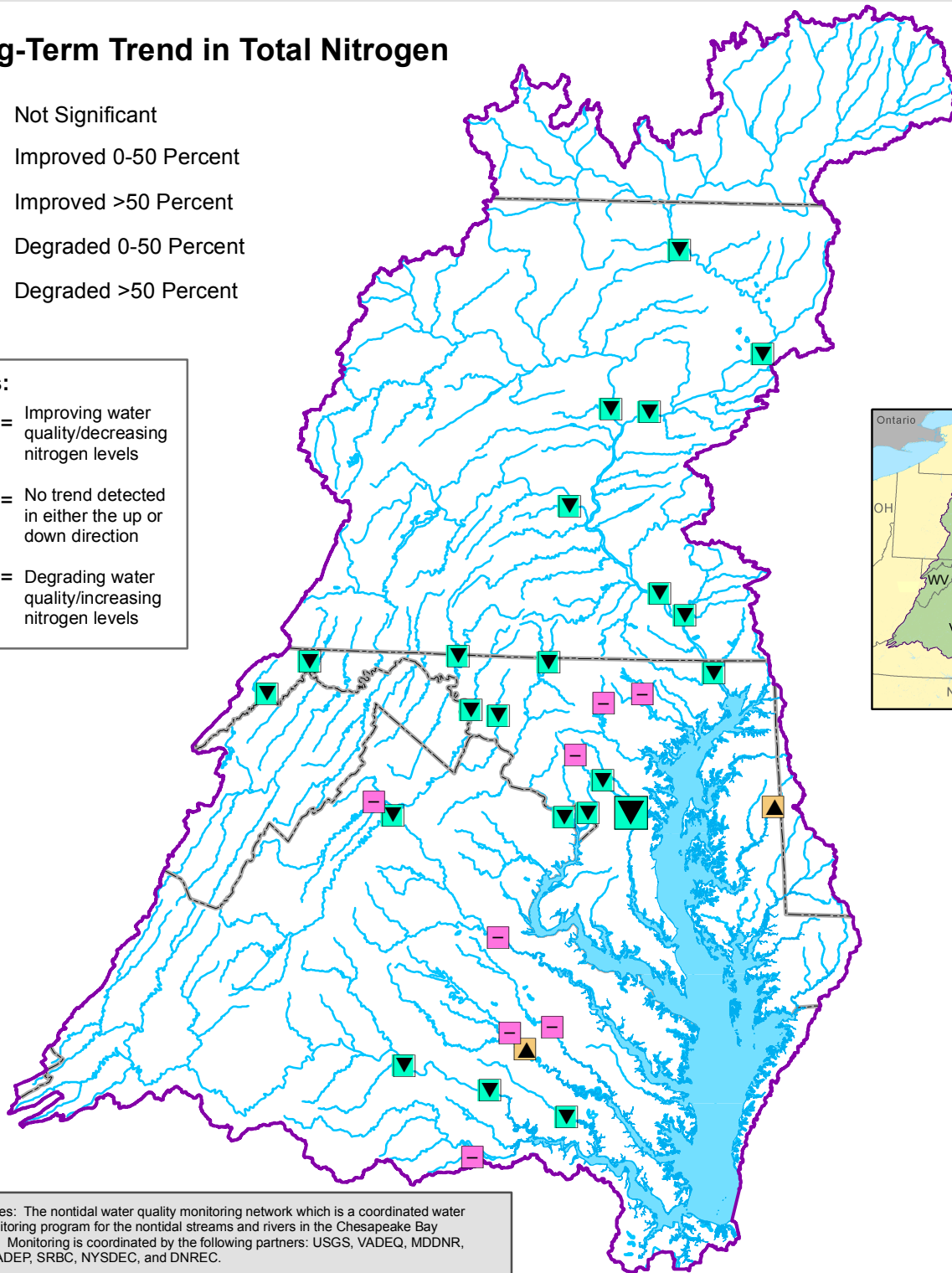


Long-Term Trend in Total Nitrogen

- Not Significant
- ▼ Improved 0-50 Percent
- ▼ Improved >50 Percent
- ▲ Degraded 0-50 Percent
- ▲ Degraded >50 Percent

Notes:

- ▼ = Improving water quality/decreasing nitrogen levels
- = No trend detected in either the up or down direction
- ▲ = Degrading water quality/increasing nitrogen levels



Data Sources: The nontidal water quality monitoring network which is a coordinated water quality monitoring program for the nontidal streams and rivers in the Chesapeake Bay Watershed. Monitoring is coordinated by the following partners: USGS, VADEQ, MDDNR, WVDEP, PADEP, SRBC, NYSDEC, and DNREC.

Trends in the Chesapeake Bay may differ from measured values due to downstream ecological processes. For more information on nitrogen trends in the Bay see http://www.chesapeakebay.net/status_pollutants.aspx

For more information, visit www.chesapeakebay.net
Disclaimer: www.chesapeakebay.net/terms_of_use.htm

