

Efforts of State Coastal Programs to Support Chesapeake Bay Water Quality Goals



John Kuriawa, NOAA

Overview

- Introduction to the CZMA and State Coastal Programs
- Maryland water quality initiatives:
 - Trust Fund / BMP Targeting
 - Innovative Technology Fund
 - Watershed Assistance Collaborative
- Virginia water quality initiatives:
 - Incentivizing Voluntary BMPs
 - Redevelopment as a TMDL Strategy
 - Policy and Planning Guidance / Technical Assistance

National CZM Program

- Voluntary partnership program between the federal government and coastal states and territories
- Authorized by the Coastal Zone Management Act (CZMA) of 1972
- Comprehensive approach to coastal resource management using enforceable policies, coordination, and planning
- Balancing act between coastal resource use, economic development, and conservation

Program Goals

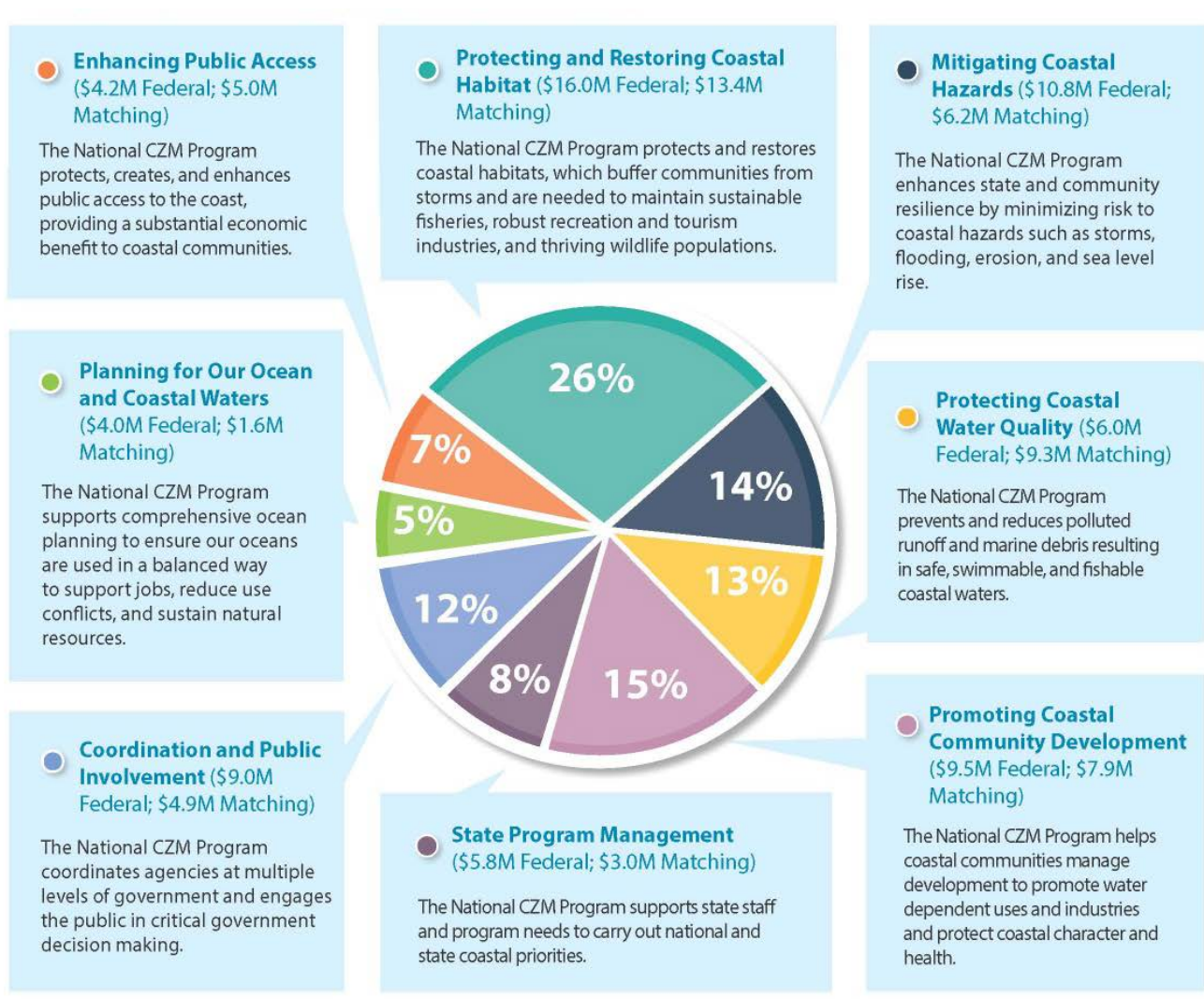
- Preserve, protect, and develop the nation's coastal resources
- Resolve conflicts among competing users
- Develop, approve and use comprehensive state management programs
- Improve cooperation and coordination among federal, state, and local governments
- Encourage public participation

CZMA “Enhancement Areas”

Focus Areas for Policy Changes

1. Public Access
2. Wetlands
3. Coastal Hazards
4. Energy Facility Siting
5. Ocean Governance
6. Special Area Management Plans (SAMPs)
7. Cumulative and Secondary Impacts (Water Quality)
8. Marine Debris
9. Aquaculture

Allocation of CZMA Funds Nationally







ADAPTING TO CLIMATE CHANGE: A PLANNING GUIDE FOR STATE COASTAL MANAGERS



NOAA Office of Ocean and Coastal Resource Management
www.noaa.gov



SMART GROWTH



EPA
United States
Environmental Protection
Agency

ICMA
Institute of the City and County Managers
Association of the City and County Managers



Native Plants of Accomack and Northampton



*Plant
ES Natives*
They're Shore Beautiful!



Maryland's Coastal Atlas

Maryland's Chesapeake & Coastal Service

The Coastal Atlas is an online mapping and planning tool that allows state and local decision-makers to visually analyze and explore data for coastal and ocean planning activities.

Maryland's Blue Infrastructure

Our ocean and estuarine environments today face an era of unprecedented activity. Wind farms and other energy facilities, commercial fishing, diverse recreational uses, and shipping highways are all competing for use and space. To ensure the protection of Maryland's critical ocean and estuarine resources—our Blue Infrastructure—and the coastal economies that depend on them, the Coastal Atlas has been developed to provide direct access to available data needed for coastal and ocean planning efforts. From finding the best location for renewable energy projects to locating sand resources needed for beach replenishment to helping local communities identify areas vulnerable to sea level rise and erosion – the Coastal Atlas will assist users in identifying potential conflicts so that they can be avoided early in the planning process.

"By having a real understanding of where resources are located and what they provide to us, the Coastal Atlas will help us better protect ocean resources and balance the many commercial and recreational demands they face."

- Governor Martin O'Malley

Better Decision-Making

The Coastal Atlas is the result of a collaborative effort among the Maryland Department of Natural Resources, the Maryland Energy Administration, Towson University, the University of Maryland, The Nature Conservancy and the National Oceanic and Atmospheric Administration.

The data available through the Coastal Atlas includes physical characteristics, human uses and ecological resources.

Through the Coastal Atlas, users are able to visualize, query, map, and analyze available data to better manage our marine and estuarine resources.

The tools currently available, and those that will be continually updated for the Coastal Atlas, are designed to support better decision-making by transforming available data into information tailored for specific issues.



Horn's Rev Wind Farm (www.hornsrev.dk)

Coastal Zone Counties:

Anne Arundel
Baltimore
Baltimore
Calvert
Caroline
Charles
Cecil
Dorchester
Harford
Kent
Prince George's
Queen Anne's
Somerset
St. Mary's
Talbot
Wicomico
Worcester
and
Baltimore City

Photo credits:

Jack Diamond, Chuck Pahl,
Laura Younger, Chris Paulis,
George Close and
Andy Aughenbaugh

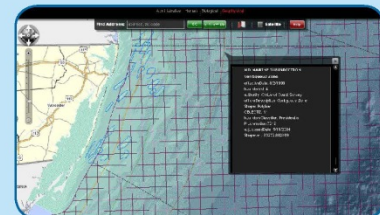


11/2012 14-12222009-428
Printed on recycled paper

To help concerned citizens address specific coastal issues, the Coastal Atlas offers several mapping applications for Maryland's Blue Infrastructure:

Ocean

Allows users to view ocean data and access tools to understand and balance multiple ocean uses, including shipping, offshore renewable energy, recreation and fishing.



Screen shot of the Coastal Atlas' Ocean mapping tool

Shorelines

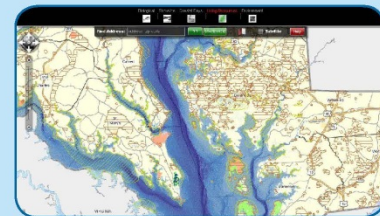
Allows users to access state shoreline erosion data, understand basic information about coastal flooding and identify areas at risk to sea level rise.



Screen shot of the Coastal Atlas' Shorelines mapping tool

Estuaries

Allows users to identify and access critical habitats in estuarine and near-shore environments for targeted conservation, protection and restoration activities such as tidal wetlands, priority finfish habitat and submerged aquatic vegetation.



Screen shot of the Coastal Atlas' Estuaries mapping tool

Coastal Atlas Training

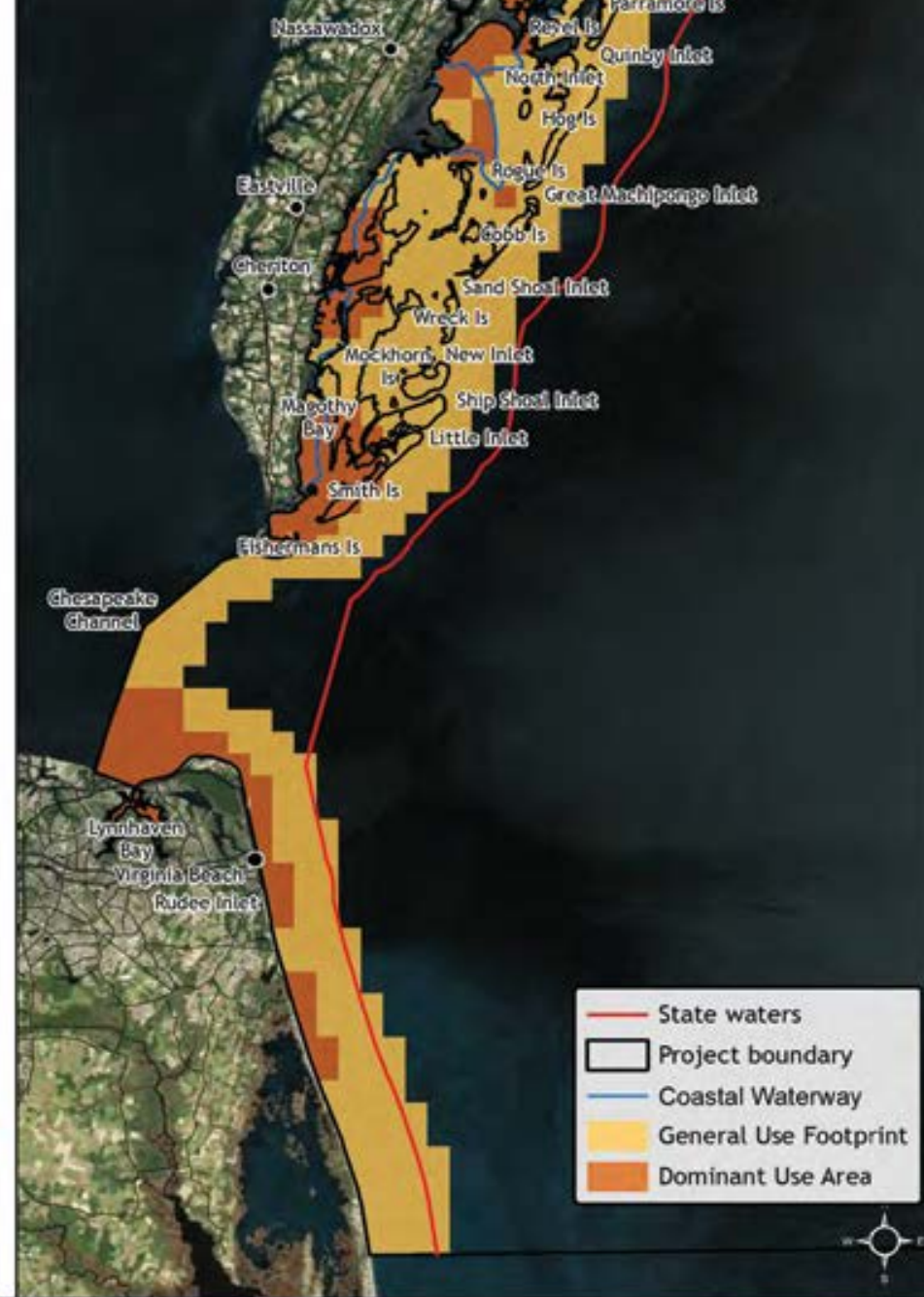
The Chesapeake & Coastal Service will offer training opportunities to help users make the most of the data and tools found on the Coastal Atlas.

The State is interested in receiving comments on the Coastal Atlas as well as feedback on the data and tools needed to help users address specific coastal issues. For questions, additional information or to view Maryland's Coastal Atlas, visit: <http://dnr.maryland.gov/ccp/coastalatlus>.

Chris Cortina | Maryland's Chesapeake and Coastal Service
Maryland Department of Natural Resources | Tawes State Office Building, E-2
580 Taylor Avenue | Annapolis, Maryland 21401
Toll free in Maryland: 1-877-620-8DNR ext. 8732
Out of state call: 410-260-8774 | Fax: (410) 260-8739
Email: ccortina@dnr.state.md.us | <http://dnr.maryland.gov/ccp/coastalatlus>











CBP/GIT Connections

- Promoting better land use:
 - Coastal smart growth incorporating resilience
 - Blue-green infrastructure planning
- CWA/TMDLs – focus on development of state-specific planning assistance, education, and collaboration
- Pollution - Marine debris reduction
- Habitat loss - Land acquisition and conservation
- Shoreline erosion - Living shorelines
- Public access – New sites and water trails
- Climate change - Vulnerability assessments and adaptation plans
- Fisheries declines - Oyster protection and restoration

NOAA's Coastal Office

- Administers the National CMP and the National Estuarine Research Reserve System (NERRs)
- Approves State Programs and changes to the programs
- Negotiates annual work plans/grants with the states
- Conducts evaluations of State CMPs and NERRs
- Formulates national coastal and ocean policy
- Provides management & technical assistance to all CZMA stakeholders
- Mediates disputes between states and federal agencies
- Provides training, geospatial tools, facilitation, and other services to partners

State Coastal Programs

- Implement Federally-approved Management Programs using ~ \$2.5M annually (VA/MD), ~ \$1.2M (DE)
- Establish and enforce state policies through federal consistency
- Coordinate with other state agencies & local governments
- Ensure public involvement
- Assess and update Management Programs
- Identify gaps and emerging issues
- Develop Best Management Practices and inform national policies

Maryland and Virginia Water Quality Initiatives

Contact

- John Kuriawa
 - 410.267.5668
 - John.kuriawa@noaa.gov
 - Located at the NOAA Chesapeake Bay Office in Annapolis