

Discussion: Ideas for definition components

Undeveloped or development primarily for recreation/conservation needs

Includes a geographic boundary for urban/community areas

Identifies land use classes that count as greenspace

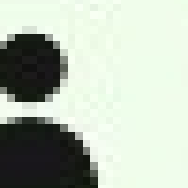
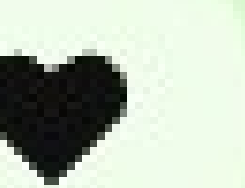
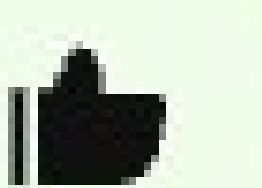
Green Area Ratio (GAR)

PLWG - green spaces and lands vs. PAWG - green spaces that provide public access use or recreation use

Vegetative cover is important to track

I like the naming criteria of TPL (people need to be able to search for a place)

The definition should be as wide as technically possible. Communities shouldn't feel their community green space does not apply.



Discussion: Ideas for definition components

impervious surfaces that are necessary to include ADA access

Open space (publicly accessible) vs Green space (natural and open lands (could be inclusive of open space but includes privately protected lands) is useful distinction.

Green space should be people focused, so people should be able to walk to it

accessibility considerations- can you walk there? take public transit?

maybe we have 2 classifications-- one very broad ("community green space" = closer to any land anywhere), and one that is more narrow ("urban green space" = in v dense area, health benefits to locals)

open space vs forested land (natural areas)

are we considering limitations such as the ability to maintain a natural field versus a turf field especially in areas with high heat index in summer time?