

~~CHWA Story Map~~ and additional decision support tools

Renee Thompson

Geographer, Lower Mississippi Gulf Water Science Center, USGS

Chesapeake Bay Program Office

Coordinator, Maintain Healthy Watersheds Goal Team, CBP

rthompson@chesapeakebay.net

Pennsylvania Storymap / Report

Chesapeake Bay Watershed Data Dashboard (Beta)

Need Help?



Start Here!

Rivers & Streams

Tidal Waters

Targeting Restoration

Management Practices

Land Policy & Conservation

Get started here...

Land Policy & Conservation

[Separate window](#) - Open this section separately in its own window.

This section provides a series of maps that can help identify opportunities across the landscape for agricultural preservation, forest conservation, and smart growth practices.

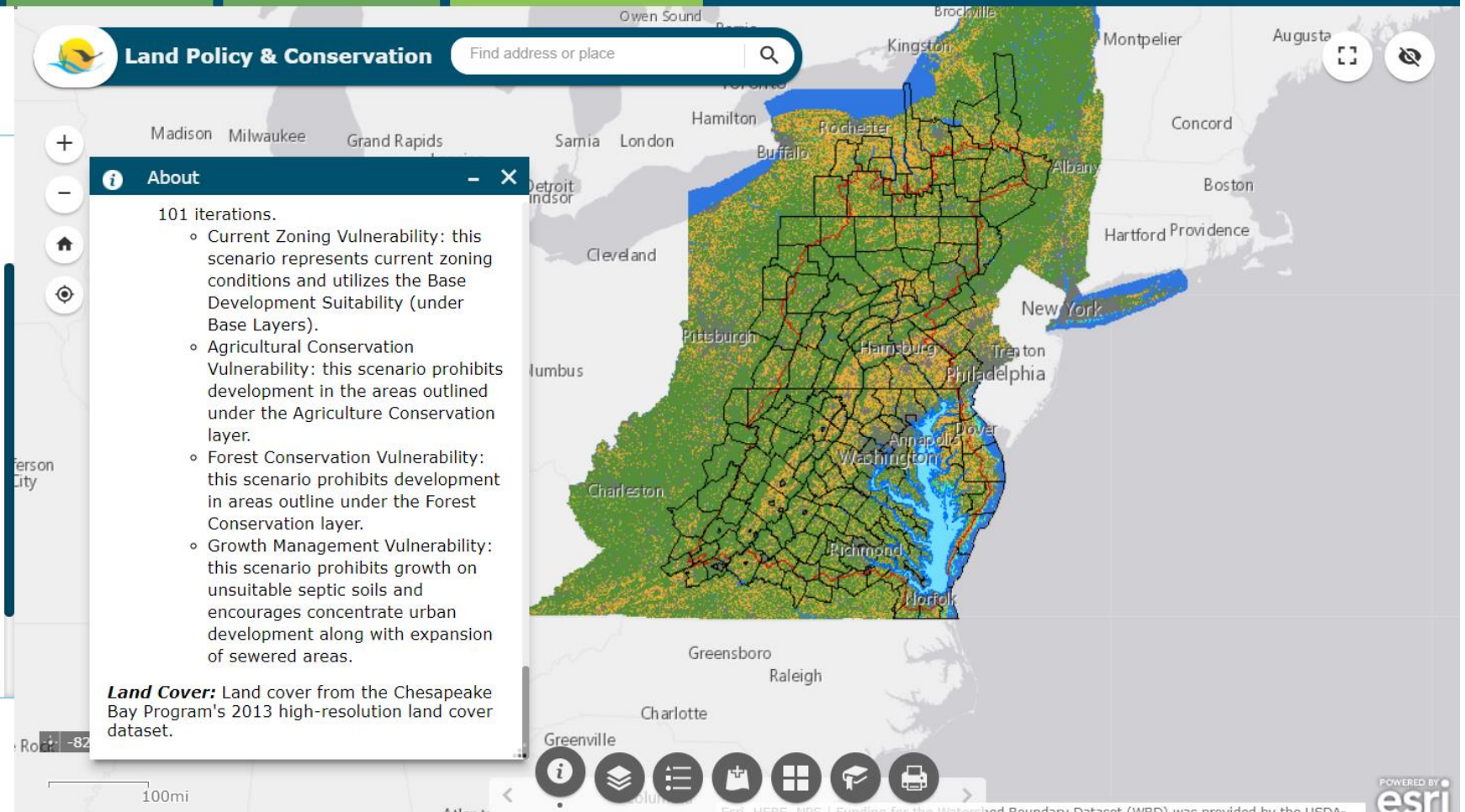


Conserving natural landscapes such as forests, riparian buffers, floodplains and wetlands is the best way to mitigate the increase in loads that can occur from development.



Growth and development that occurs on sewer can lead to less nitrogen

Additional Resources




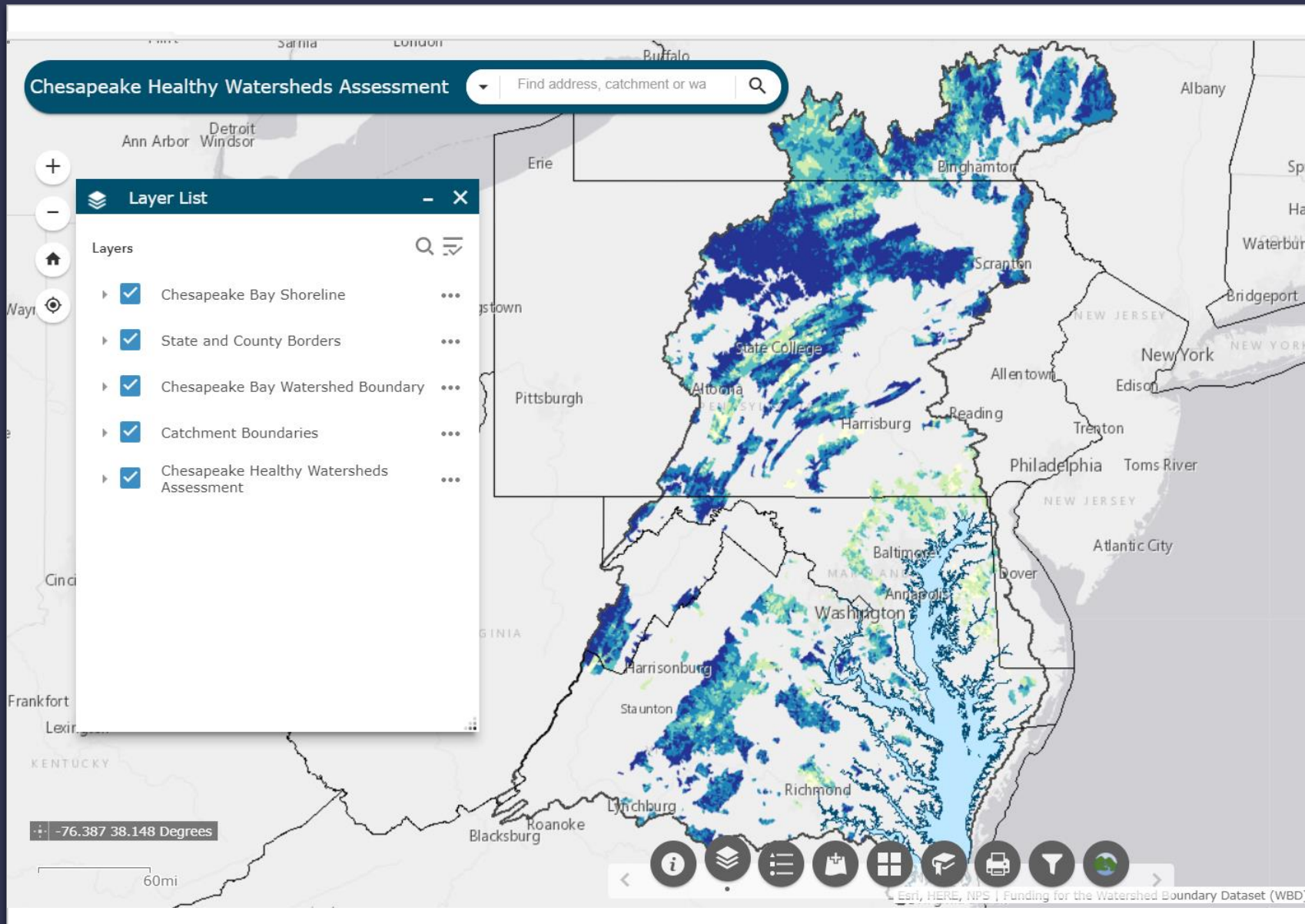
A large orange circle is positioned on the left side of the slide, partially cut off by the edge.

Request for Volunteers

John Wolf requested volunteers to participate in user testing of the [Data Dashboard Tool](#). **If you are interested in volunteering or have any inquiries please send your name/questions to John Wolf (jwolf@chesapeakebay.net) and Ruth Cassilly (rcassilly@chesapeakebay.net).**

All volunteers should submit their name by Friday, December 11th.

A yellow dashed line is located in the bottom right corner of the slide, consisting of several short, curved segments.



Chesapeake Healthy Watersheds Assessment

Chesapeake Bay Environmental Justice and Equity Dashboard (DRAFT)

Need Help?



Overview

Demographic Indicators

Cross-Outcome Applications

Current Initiatives

Acknowledgements

A Patchwork Population (ACS)

Minority Population (EJScreen/ACS)

[Separate window](#) - Open this section separately in its own window.

The percent of individuals in a block group who list their racial status as a race other than white alone and/or list their ethnicity as Hispanic or Latino. That is, all people other than non-Hispanic white-alone individuals. The word "alone" in this case indicates that the person is of a single race, not multiracial. (EJ Screen)

Note: The Chesapeake Bay Program's Diversity Workgroup discourages the use of the word "minority" to describe communities of color because of its negative connotation. In addition, it is an inaccurate term because people of color make up the global majority. However, we are using it here in order to be consistent with the verbiage of EPA EJ Screen.

Minority Population

Quick Start Information

Use the widget icons below to open map layers, view legend, add your own data, and more. Hover over the widget to learn more. Once you open a widget window, you can move it anywhere on the screen by dragging and dropping the window (including this one) or resize it by pulling the bottom right corner of the window.

Layer Description

Percent Minority - Percent minority as a fraction of population, where minority is defined as all but Non-Hispanic White Alone. Calculated from the Census Bureau's American Community Survey 5-year summary estimates.

Percent Low Income - Percent of individuals whose ratio of household income to poverty level in the past 12 months was less than 2 (as a fraction of individuals for whom ratio was determined). Calculated from the Census Bureau's American Community Survey 5-year summary estimates.

Percent in Linguistic Isolation - Percent of households in which no one age 14 and over speaks English "very well" or speaks English

Find address or place



Layer List

Layers

☒ EJ Screen Demographic Indicators

☒ Minority Population

☐ Data Not Available

☐ Less than 50%ile

☐ Less than 50%ile

☐ Less than 50%ile

☐ Less than 50%ile

☐ Less than 50%ile

☐ Less than 50%ile

☐ 50-60%ile

☐ 60-70%ile

☐ 70-80%ile

☐ 80-90%ile

☐ 90-95%ile

☐ 95-100%ile

☐ Low Income



Esri, HERE, NPS | Funding for the Watershed Boundary Dataset (WBD) was provided by the USDA...

POWERED BY
esri



Land Use Resource Guide

The Chesapeake Bay Program (CBP), through its [Maintain Healthy Watersheds Goal Implementation Team](#), has a goal of maintaining the long-term health of watersheds identified as healthy by its partner jurisdictions.

In addition, under the leadership of the Land Use Workgroup, CBP is working to continually improve our knowledge of land conversion and the associated impacts throughout the watershed. This is a compilation of ongoing initiatives, databases, tools, other resources developed to support local governments and land use managers in designing sustainable landscapes.

Land Use Planning

Chesapeake Land Use Policy Toolkit: This [toolkit](#) provides information about land use policy tools local governments can use to slow the conversion of



Thank you!!

Renee Thompson

rthompson@chesapeakebay.net



“Management”
question: Where
are there high
quality/high risk
of future
development
lands that are in
underserved
communities?

Data:

([Chesapeake Bay Environmental Justice and Equity Dashboard](#))

- Minority Population
- Low income

([Chesapeake Healthy Watersheds Assessment](#))

- High risk of development
- High forested land cover
- Low percentage conservation



Land Use Options Evaluation Outcome SRS 2020

Renee Thompson

Geographer, Lower Mississippi Gulf Water Science Center, USGS

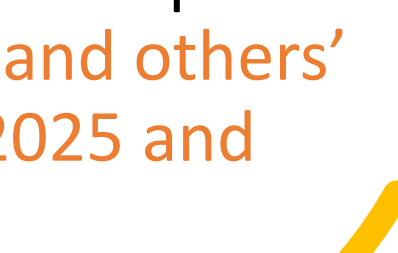
Chesapeake Bay Program Office

Coordinator, Maintain Healthy Watersheds Goal Team, CBP

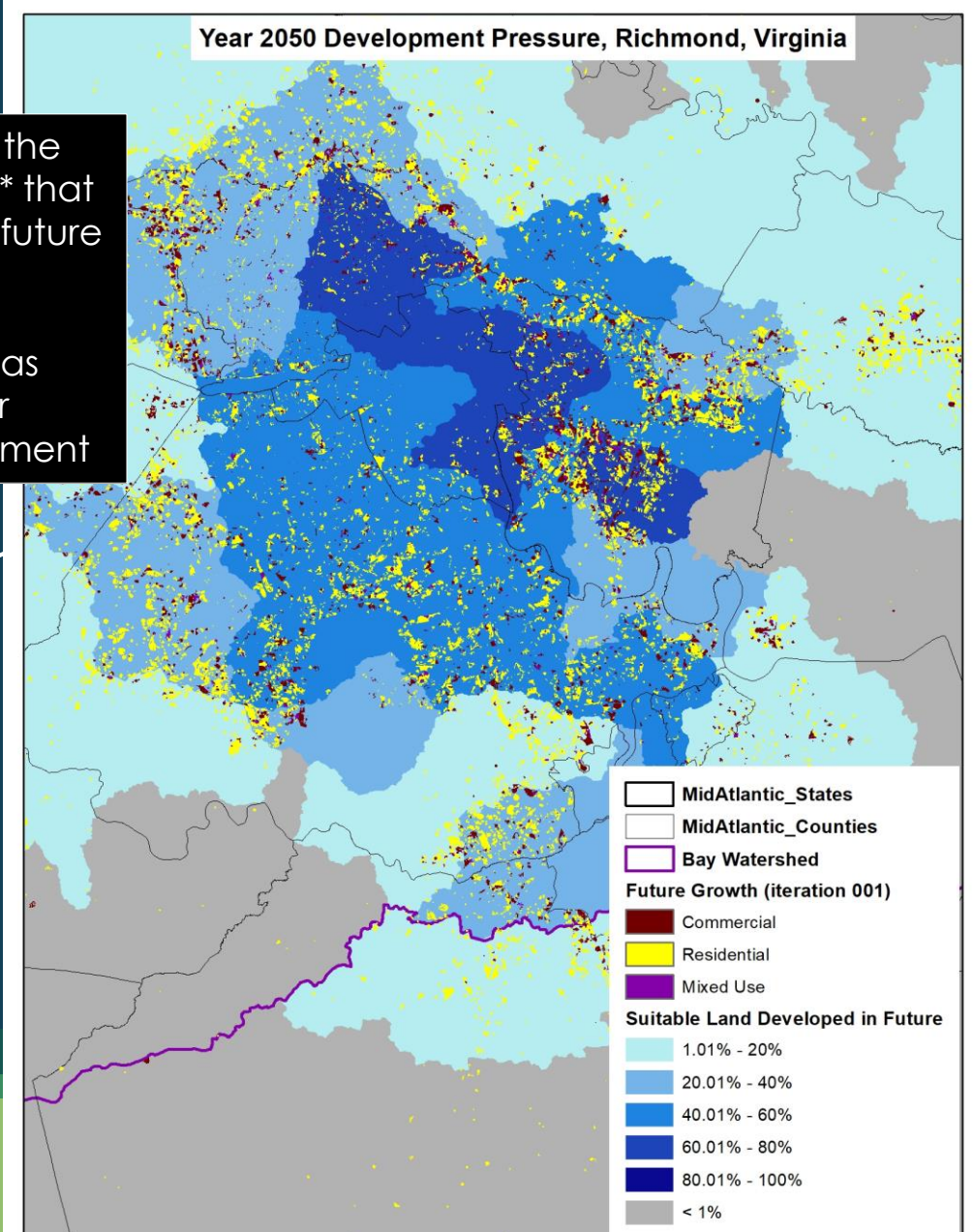
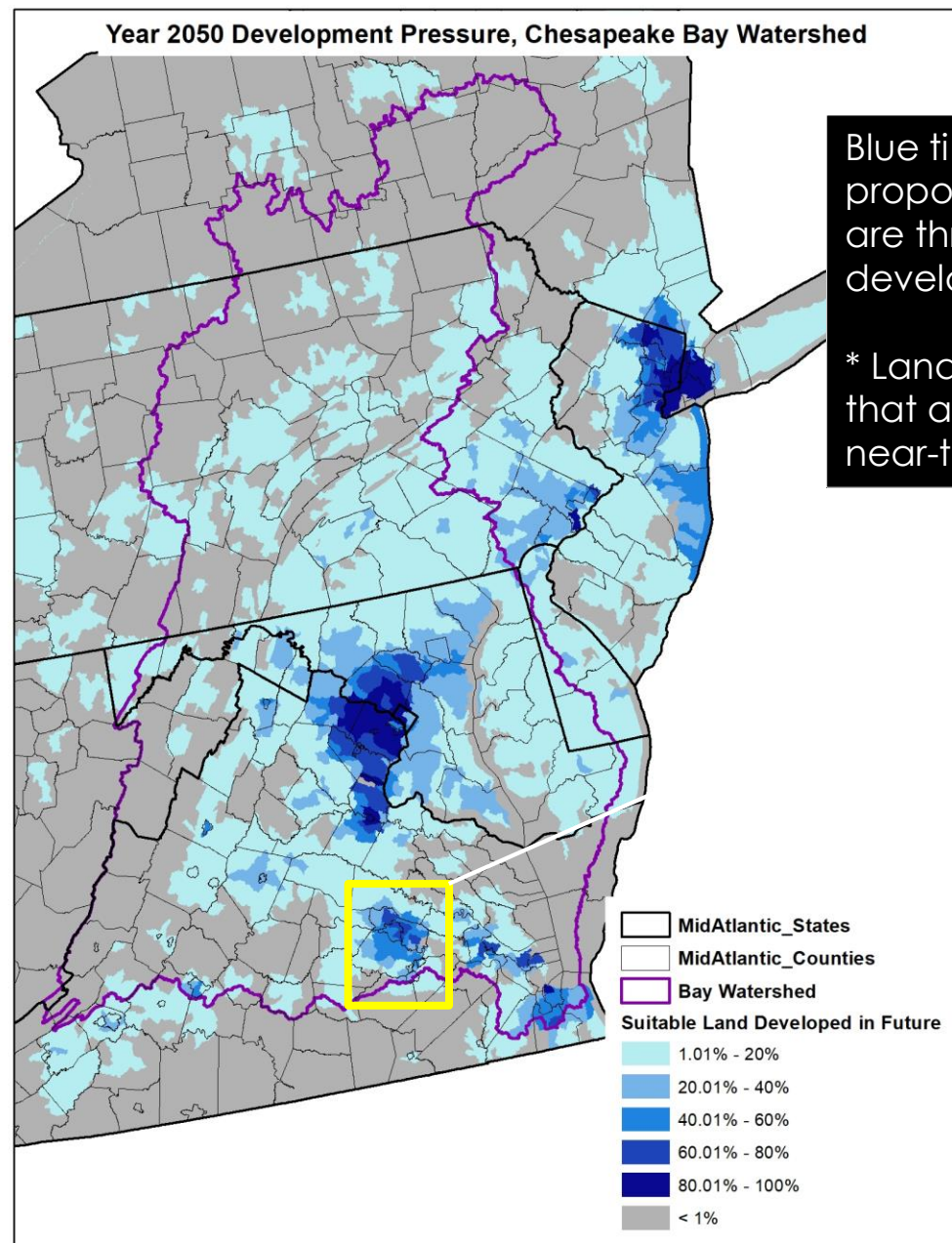
rthompson@chesapeakebay.net

Goal: Land Use Options Evaluation

Outcome: By the end of 2017, with the direct involvement of local governments or their representatives, **evaluate policy options, incentives and planning tools** that could assist them in **continually improving their capacity to reduce the rate of conversion of agricultural lands, forests and wetlands** as well as the rate of changing landscapes from more natural lands that soak up pollutants to those that are paved over, hardscaped or otherwise impervious. Strategies should be developed for **supporting local governments' and others' efforts in reducing these rates by 2025 and beyond.**



Vulnerability to Land Conversion



Logic and Action Table Progress

Determine the spectrum of existing “policy options, incentives and planning tools”

Gather materials and putting them on a platform local leaders can/will access (in consultation with CBP Comm/Web Team)

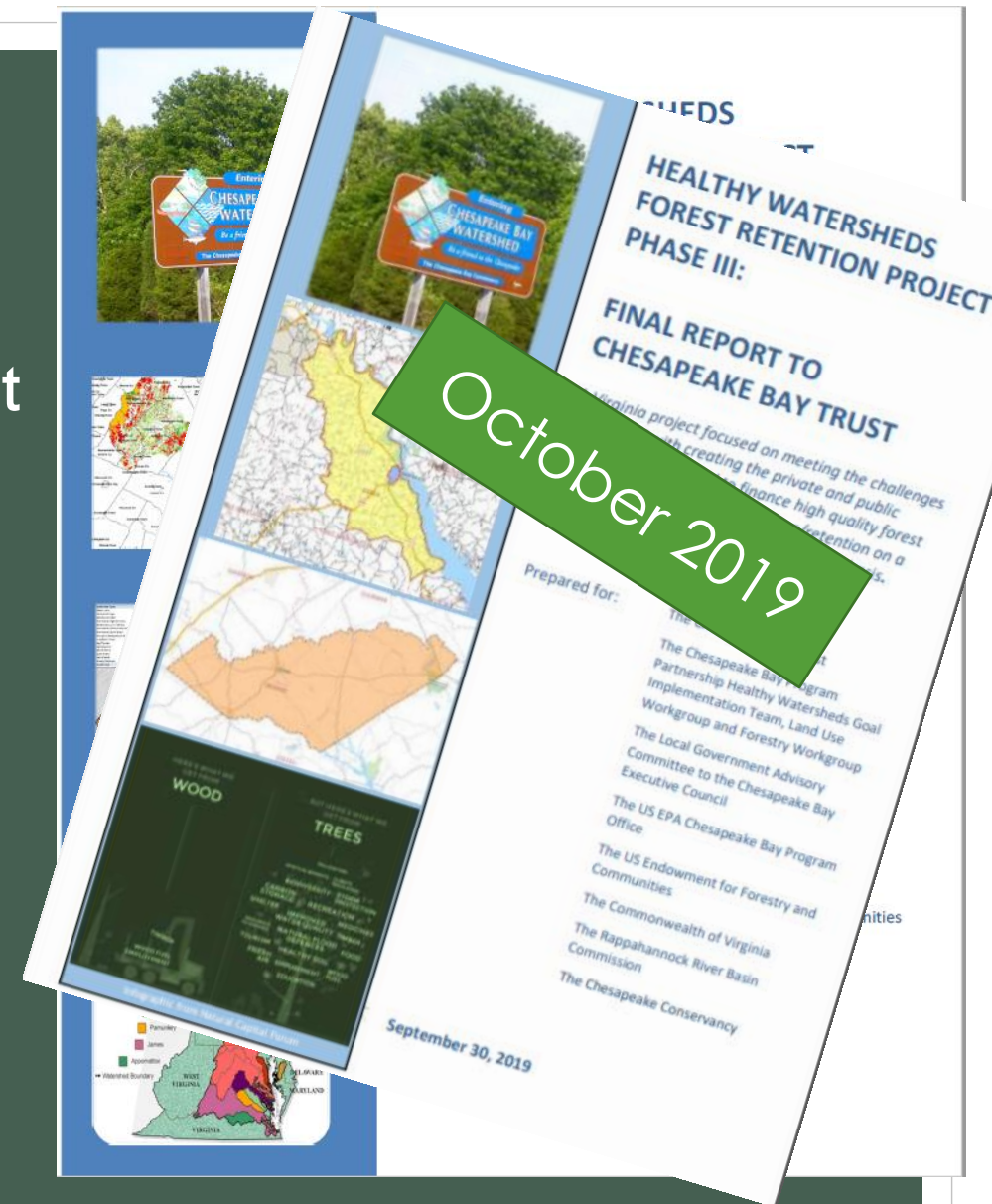
Survey local governments and interest groups to determine most effective “policy options, incentives and planning tools”

What is our progress?



Healthy Watersheds Forest Retention Project (2014 – present)

- Phase I: Quantified the value of retaining forestland (economic case for “crediting conservation”)
- Phase II: VA/PA partnership – Worked with localities to identify policy tools and incentives
- Phase III: Implement tools in the field and develop large-scale private sector financing model



- Deliverables: Toolbox

Cross CBP local engagement and land use work

2019-2020 GIT funding Projects

- **Green Fin Studio:** for scope 12: for cross-outcome watershed educational materials for local governments. \$49,503.
 - HW Coordinator worked with scope developers to assure a land use and land conservation module will be one of the first developed.
 - Working closely with project leads and contractors to get “our resources” into the communication materials.
- **SKEO Solutions, Inc.:** for scope 7: targeted local outreach for green infrastructure in vulnerable areas
 - HW Coordinator serves on steering committee
 - Provided data and assessment input for selection of target areas
 - Continued engagement

Presentation and Webinars

Chesapeake Community Research Symposium June 10th, 2020



Chesapeake Bay Program
Science. Restoration. Partnership.



USGS
science for a changing world

Watershed vulnerability and
resilience: “Signals of Change”
and potential management
response

Renee Thompson, Geographer
USGS, Chesapeake Bay
Program
Maintain Healthy Watersheds
GIT, Coordinator



Renee Thompson

Land Conservation Incentives and Planning Tools: A review of strategic land conservation resources in the Chesapeake

A Local Engagement Strategy

from the Chesapeake Bay Program

CBP Local Engagement Strategy

Local Engagement Strategy

Audience



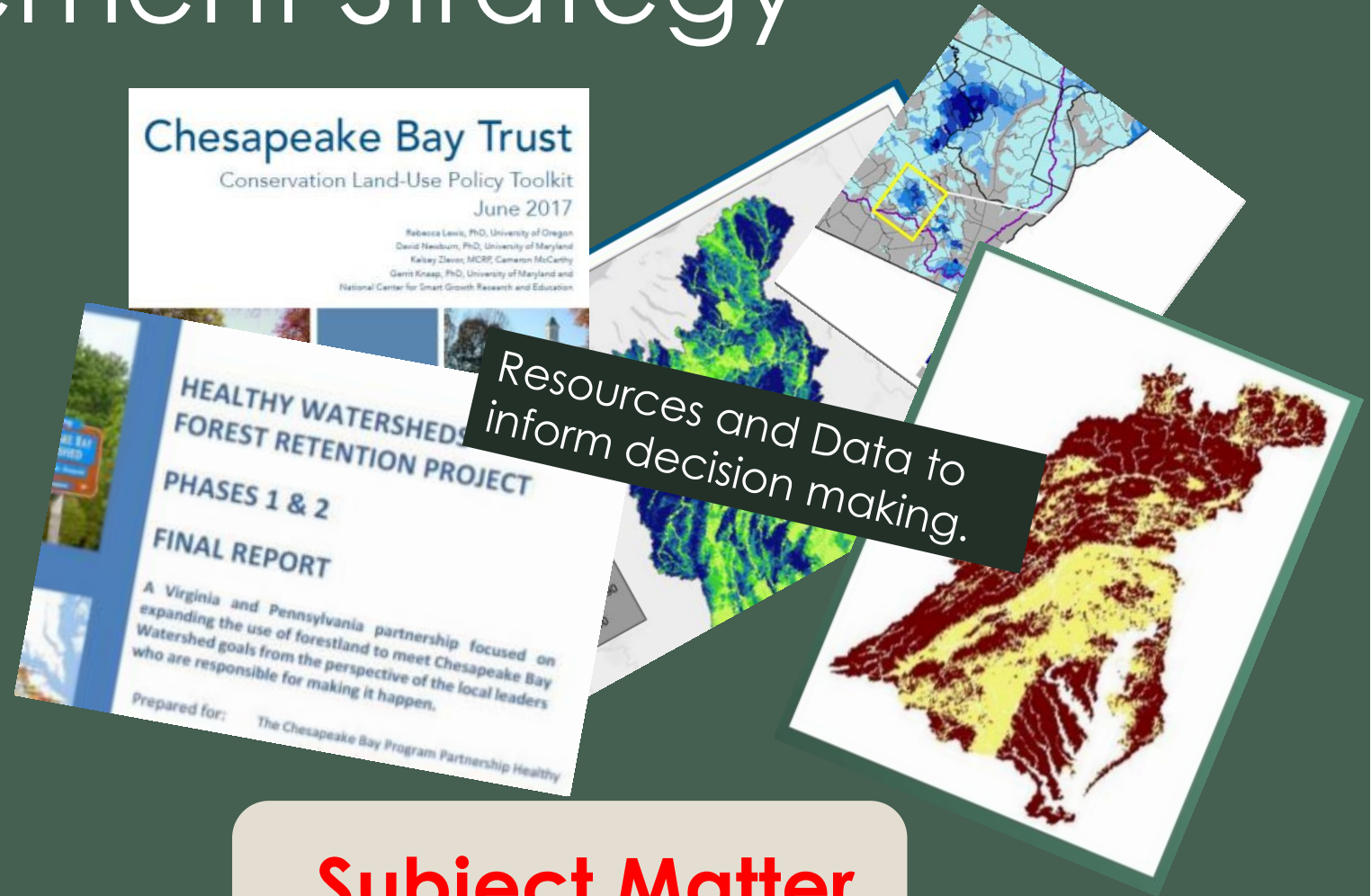
Trusted Sources



Translators



Subject Matter Experts



Examples of Trusted Sources



State level associations

Maryland Association of Counties
Virginia Municipal League
Pennsylvania Association of Township Supervisors



Council of Governments

Metropolitan Washington Council of Governments



State Universities

Maryland Sea Grant
Virginia Water Resources Center
Penn State Extension Service



Conservation Districts and Planning Districts

Natural Resource Conservation Service



River Basin Commissions

Relevant resources:

Strategic outreach education program for local elected officials in the Chesapeake Bay Watershed – [Ecologix Report](#) - (GIT Funding FY 2016 – EcoLogix, Group, Local Leadership Outcome)

- Provides recommendations for the design of a strategic outreach and education program for elected officials that will most cost-effectively achieve

Local Priorities

- Economic Development
- Infrastructure Maintenance and Financing
- Public Health and Safety
- Education



Your Priorities

- Your Need
- Your Message
- Information sharing

Local Priorities

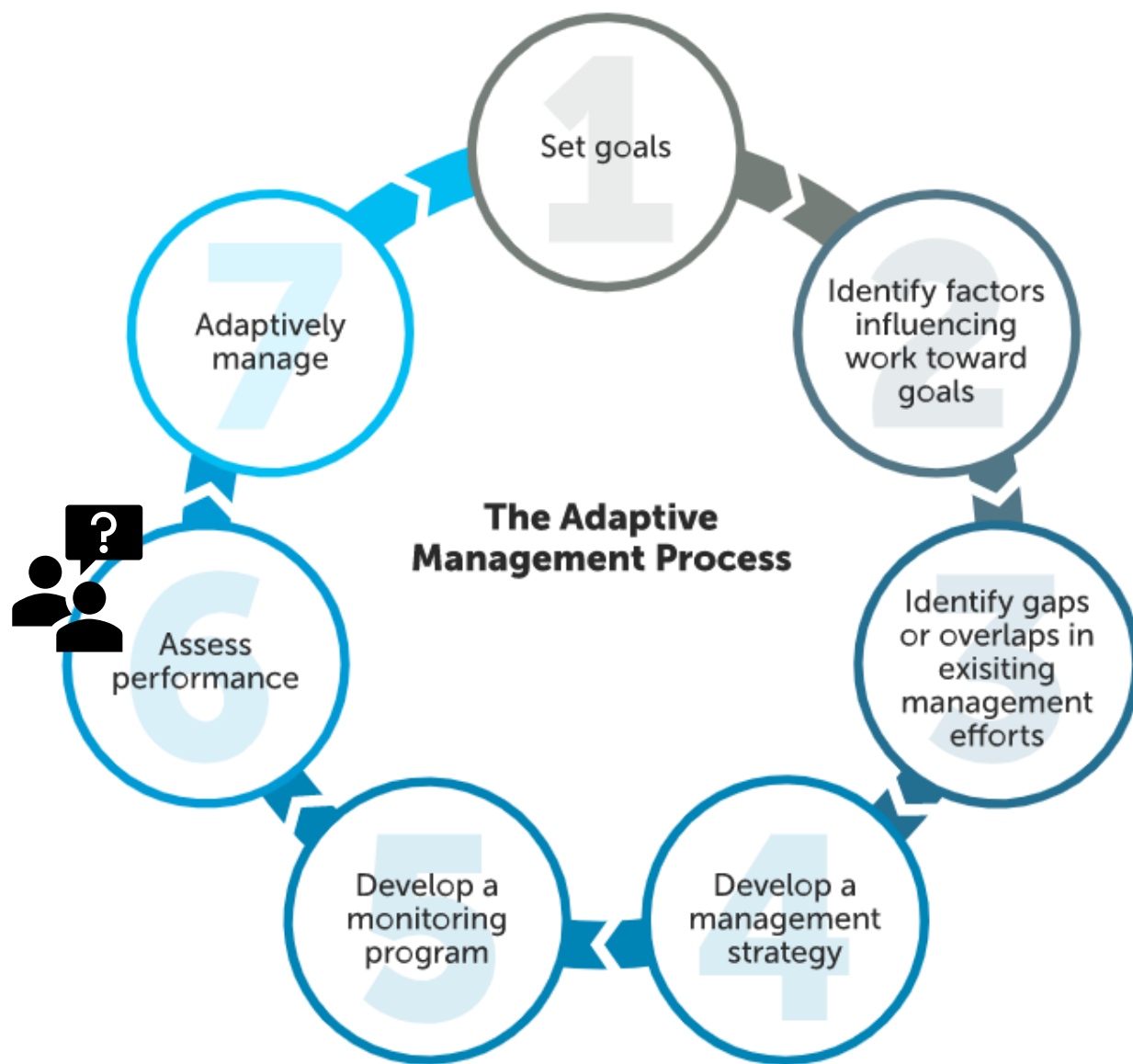
Infrastructure
Maintenance
and Financing

Economic
Development

Public Health
and Safety

Education

Provide policies, incentives,
plans and tools to empower
locals to reduce natural land
conversion



How to Assess Performance

- How do we know if the information and resources are having the intended impact?
 - Track land change conversion. (reduced rate of change)
 - Provide pilot examples and anecdotes on how the information is being utilized on the local level.
 - Track specific meetings, webinars, materials and resources where CBP land use resources were utilized?

Timeline / call to action

- Dec 9- Check-in meeting, draft materials due
- Jan 21- STAR materials due
- Jan 28 - STAR meeting (for feedback from CBP colleagues and GITs)
- Jan 29 – Progress Materials Due to Management Board
- February 11 – Management Board (Local Action) Quarterly Progress Meeting
- April – June – Final materials due to public comment, public comment, editing.
- June 9 – Complete cycle