

Local Review of Phase 6 Land Use Dataset

Peter Claggett, Andy Fitch, Dave Strong, Cassandra Ladino
U.S. Geological Survey

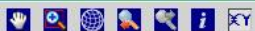
Guy Stevens,
University of Maryland Center for Environmental Science

December 7, 2015
Land Use Workgroup Meeting

Local Review of Phase 6 Land Use

1. Localities will be given 4 weeks to review the P6 Land Use for their county between February – July 2016.
2. Localities will be notified directly- via email- with the exact date of the P6 posting on the web.
3. USGS has built a website to host the P6 land use data and facilitate its review and dissemination.
4. CBPO will conduct a usability study of the website and recommend adjustments prior to its release in February.
5. CBPO will host a recorded webinar in January to provide a detailed overview of the review process.

Chesapeake Bay Phase 6 Land Use Viewer



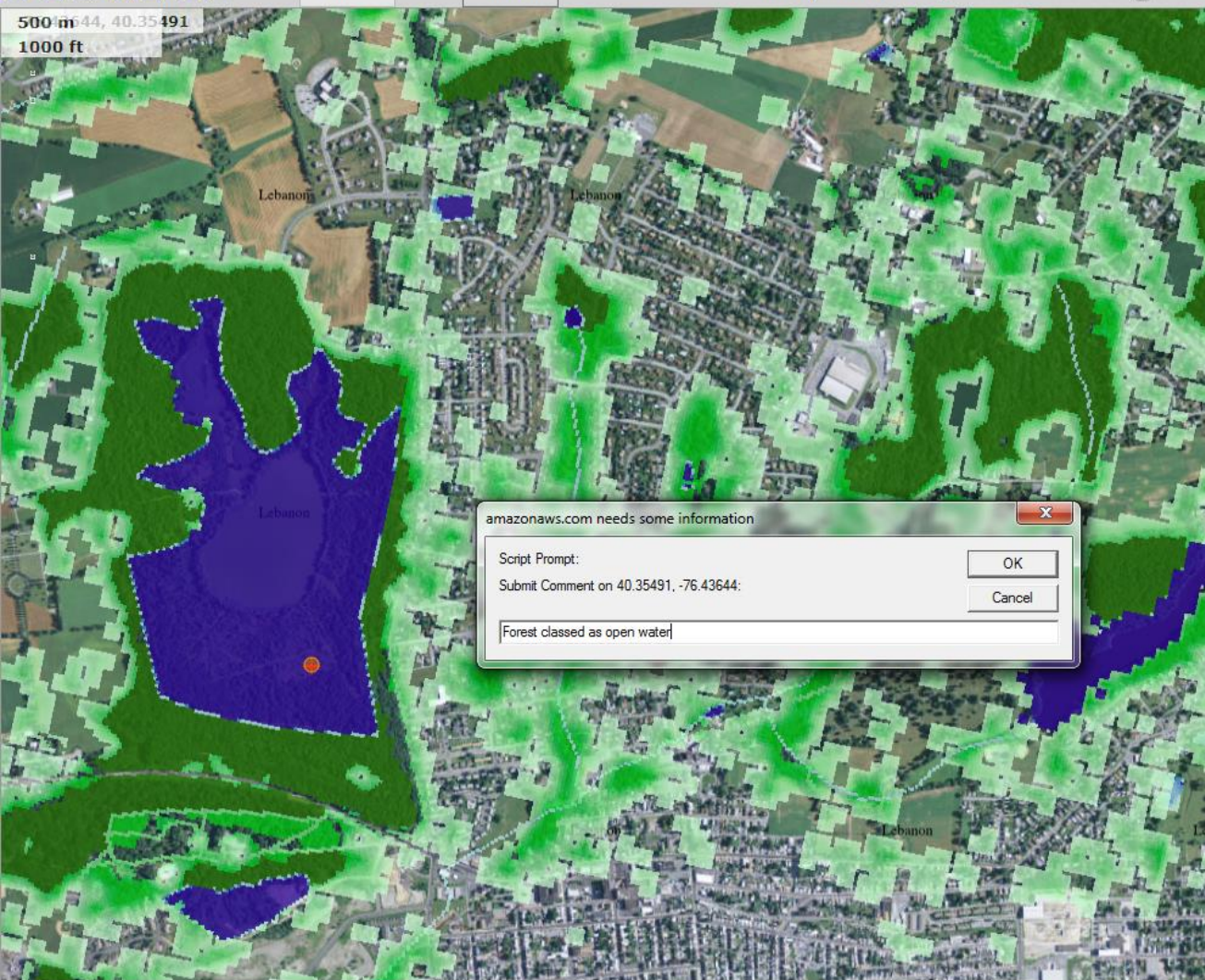
Download

Permalink

Overlay Transparency:

Comment

500 m 644, 40.35491
1000 ft



amazonaws.com needs some information

Script Prompt:

Submit Comment on 40.35491, -76.43644:

Forest classed as open water

OK Cancel

Map Layers

▼ Phase 6 Land Use Datasets

Click [here](#) to see Phase 6 Local Land Use Methodology

Click [here](#) to see Regional Mapping Methodology

Click on the layer name to get information about the layer

- ☐ Developed
- ☐ Impervious Roads
- ☐ Impervious Non-Roads
- ☒ Forest
- ☒ Tree Canopy Over Herbaceous
- ☒ Water
- ☐ Wetlands
- ☐ Turf Grass
- ☒ Open Space

▼ Overlays

Click [here](#) to see Phase 6 Local Land Use Methodology

Click [here](#) to see Regional Mapping Methodology

Click on the layer name to get information about the layer

- ☐ Federal Facilities
- ☐ Phase 6 Land-River Segments
- ☐ Municipal Separate Storm Server Systems
- ☐ CSOs
- ☐ Sewer Service Areas
- ☒ Chesapeake Bay Watershed Counties

▼ Base Map

- ☐ None
- ☐ The National Map
- ☐ The National Map Imagery
- ☐ USA Topo Maps
- ☐ ESRI Topo
- ☒ ESRI Imagery
- ☐ ESRI Street Map
- ☐ ESRI Light Gray Base Map

Accessibility FOIA Privacy Policies and Notices

[U.S. Department of the Interior](#) | [U.S. Geological Survey](#)

URL: <http://ec2-52-4-30-207.compute-1.amazonaws.com/chesbay>

Page Contact Information: dstrong@usgs.gov

Page Last Modified:

What are locals reviewing?

1. Locations of
 - Turf Grass
 - Cropland
 - Pasture
 - Open Space
 - Sewer service areas
 - MS4's
 - CSO's
2. Local data used to inform above classification.

If problem, what they can do?

1. Send us better data representing:
 - Land use
 - Impervious surfaces
 - Parcels
 - MS4s
 - CSOs
 - Sewer service areas
2. Help us interpret their data.
 - Land use classification
 - Parcel classification
 - Sewer service area classification