

# Objective 1 Land Cover Schedule Updates and Bare Developed

January 6, 2021: LUWG

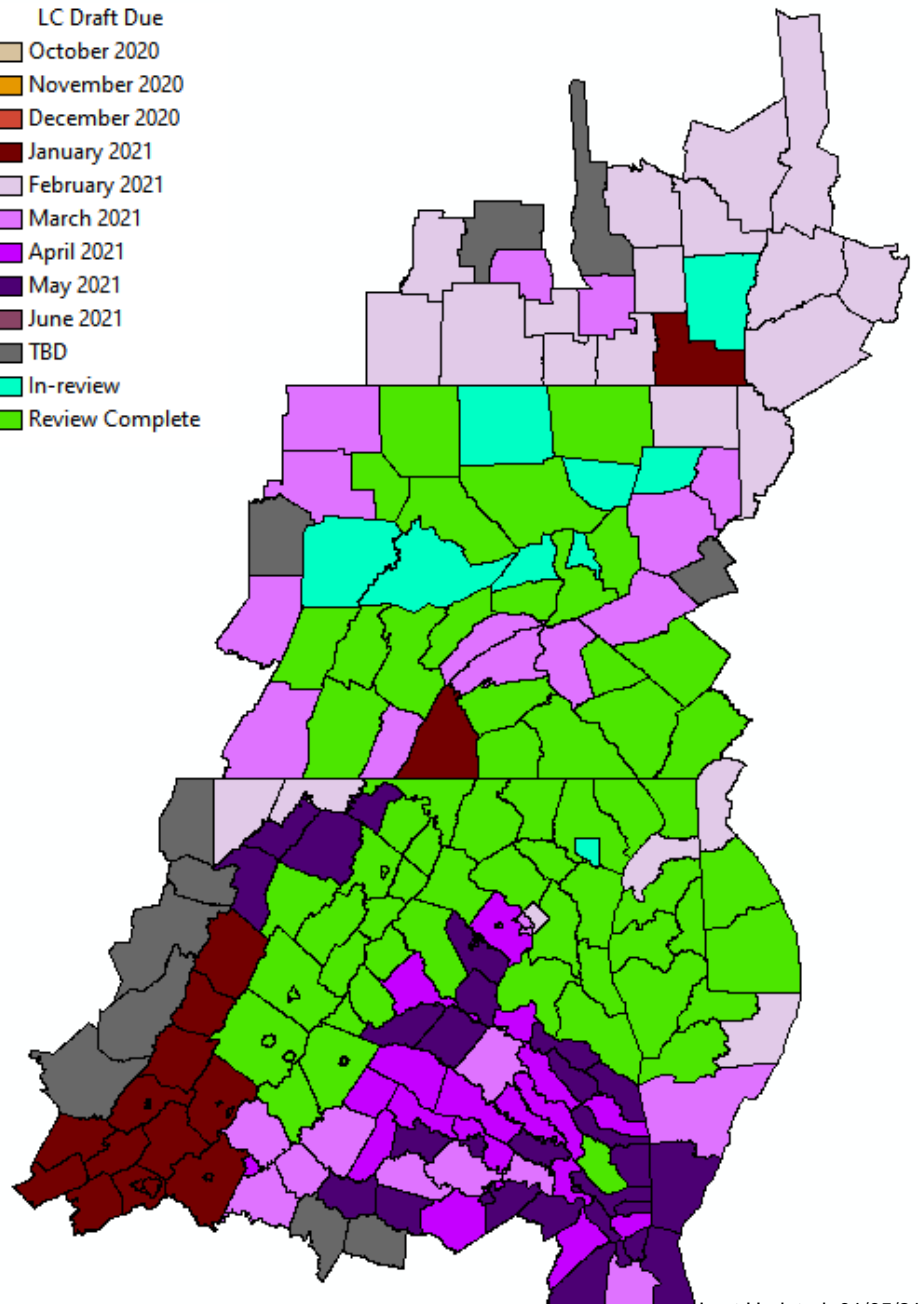
Rachel Soobitsky

[rsoobitsky@chesapeakeconservancy.org](mailto:rsoobitsky@chesapeakeconservancy.org)

# Land Cover Production Schedule

## LC Draft Due

- October 2020
- November 2020
- December 2020
- January 2021
- February 2021
- March 2021
- April 2021
- May 2021
- June 2021
- TBD
- In-review
- Review Complete



Last Updated: 01/05/21

## - Review extended due to COVID-19:

- Baltimore City, MD
- Clearfield, PA

## - Review-time passed

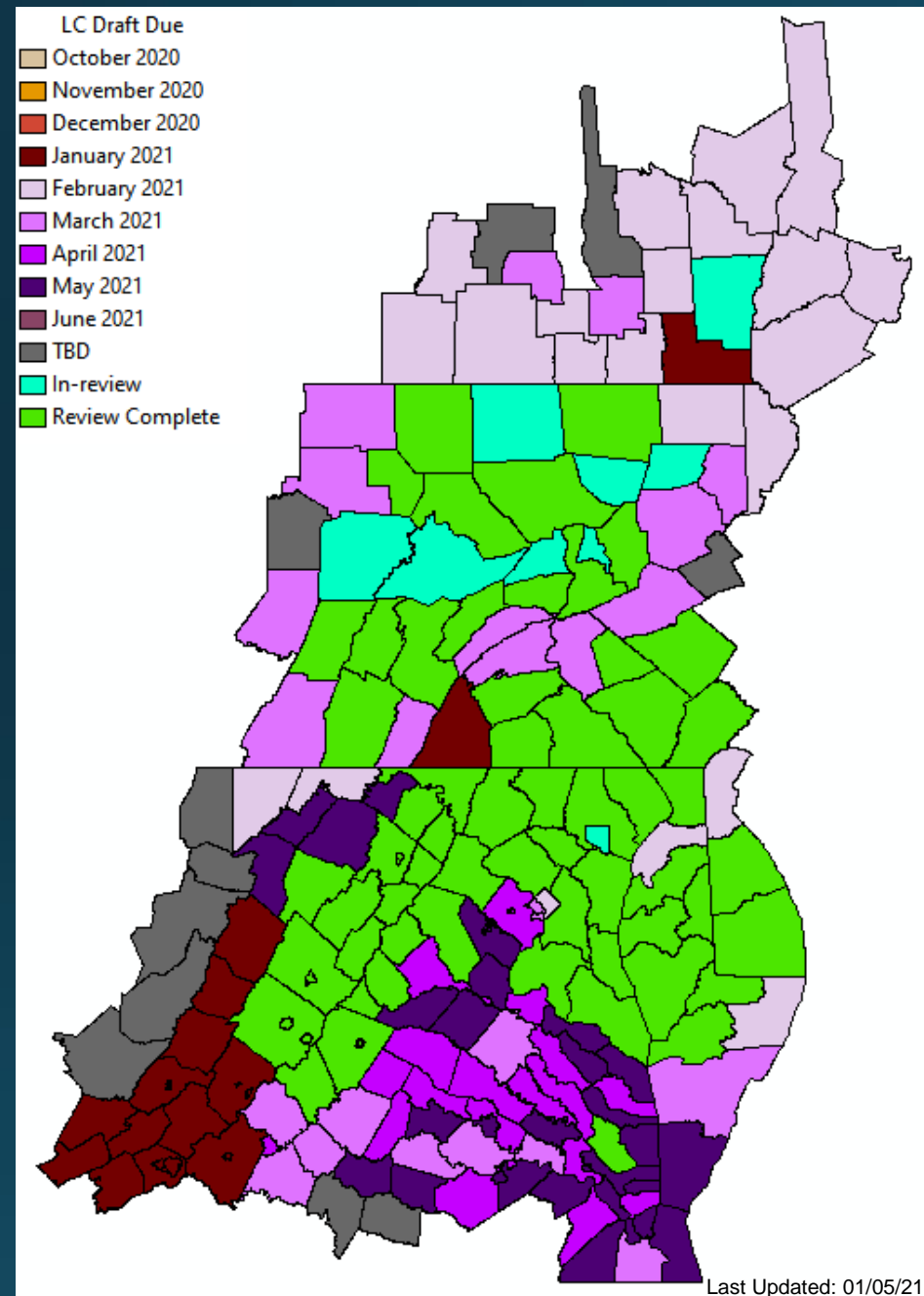
(feedback from county in green):

- Baltimore County, MD
- Cecil County, MD
- Queen Anne's, MD
- Talbot, MD
- Somerset, MD
- Wicomico, MD
- Dorchester, MD
- Harford, MD
- Caroline, MD
- Washington, MD
- Carroll County, MD
- Adams County, PA
- Chester County, PA
- Cumberland County, PA
- Lancaster, PA
- Kent, DE
- Sussex, DE
- Page, VA
- Waynesboro, VA
- Loudon, VA
- Fauquier, VA

- Anne Arundel, MD
- Charlottesville, VA
- Staunton, VA
- Greene, VA
- Frederick, VA
- Albemarle, VA
- Clarke, VA
- Nelson, VA
- Warren, VA
- Augusta, VA
- Winchester, VA
- Rappahannock, VA
- Madison, VA
- Jefferson, WV
- Rockingham, VA
- Harrisonburg, VA
- Shenandoah, VA
- Calvert, MD
- Charles, MD
- Frederick, MD
- Howard, MD
- St. Mary's, MD
- Montgomery, MD

- Prince George's, MD
- York, PA
- Bedford, PA
- Blair, PA
- Cambria, PA
- Clinton, PA
- Columbia, PA
- Mifflin, PA
- Montour, PA
- Berks, PA
- Lebanon, PA
- Cameron, PA
- Centre, PA
- Bradford, PA
- Huntingdon, PA
- Lycoming, PA
- Northumberland, PA
- Cambria, PA
- Snyder, PA
- Potter, PA
- Hardy, WV
- Berkeley, WV
- Gloucester, VA

# Land Cover Production Schedule



## Localities Currently In-Review:

- Chenango, NY
- Sullivan, PA
- Wyoming, PA
- Union, PA
- Tioga, PA

## Upcoming Localities to Review:

- Franklin, PA
- Alleghany, VA
- Covington City, VA
- Bath, VA
- Bedford County, VA
- Bedford City, VA
- Botetourt, VA
- Buena Vista, VA
- Craig, VA
- Giles, VA
- Highland, VA
- Lexington, VA
- Montgomery, VA
- Roanoke County, VA
- Roanoke City, VA
- Salem, VA
- Rockbridge, VA
- Monroe, WV
- Pendleton, WV
- Broome, NY

# Land Cover Comments

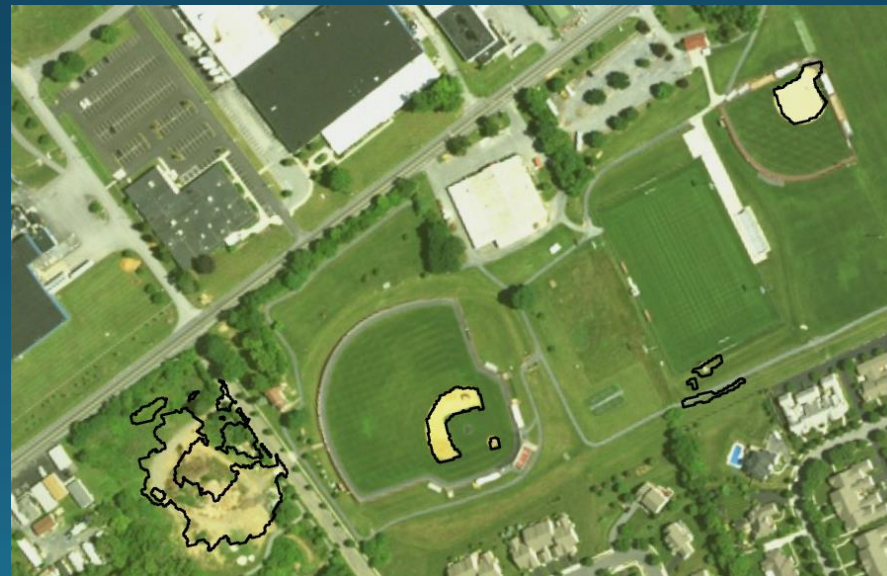
- Hardy and Berkeley County WV:
  - Structures are well represented, as is low vegetation vs. tree canopy in agricultural and residential areas. No big areas of barren or impervious surface misclassification.
  - Areas where tree canopy is classed as low vegetation or barren that are actually likely shrubland. Due to quality of available lidar, shrubland class is sparse.
  - Gravel/dirt roads are inconsistently classed as impervious roads or barren.
  - Water misclassification.
- Lycoming County, PA
  - Areas of packed dirt misclassified as impervious other.

# Bare Developed Methods

- Run all other land use class methods first. Capture all barren lands within: suspended succession, natural succession, agriculture, timber harvest, solar fields, extractive (active), wetlands, and bare shore
- Remaining barren lands are considered “bare developed”. This should include construction sites, compacted dirt at industrial sites, baseball diamonds, etc.



# Bare Developed Examples



# Action Requested

- The LUWG is asked to voice any concerns or issues with the proposed mapping procedures.

# Questions?

[rsoobitsky@chesapeakeconservancy.org](mailto:rsoobitsky@chesapeakeconservancy.org)