



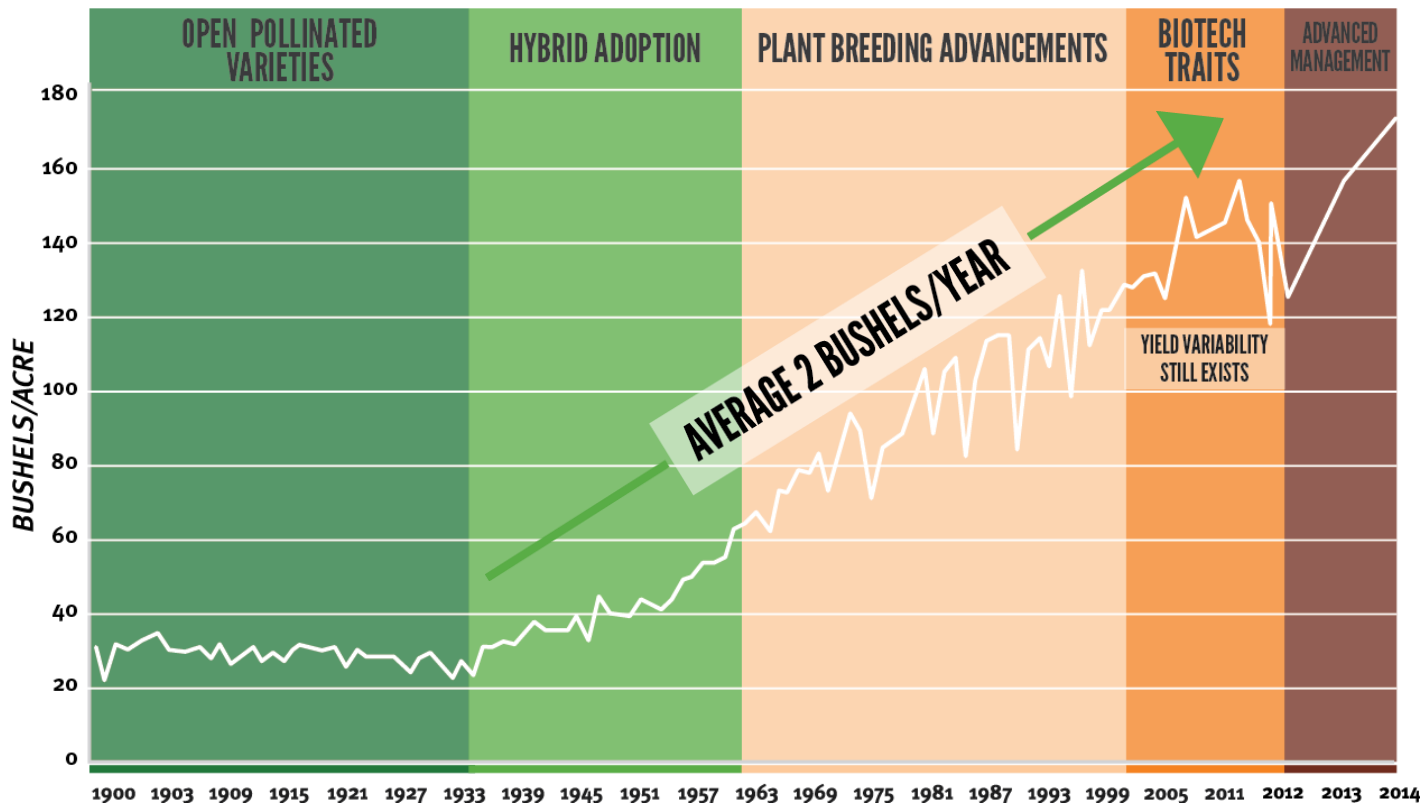
encircaSM

DUPONT

 PIONEER.

ENCIRCASM SERVICES

US CORN YIELD (1900-2014)



EXPLORE.

ENCIRCASM SERVICES

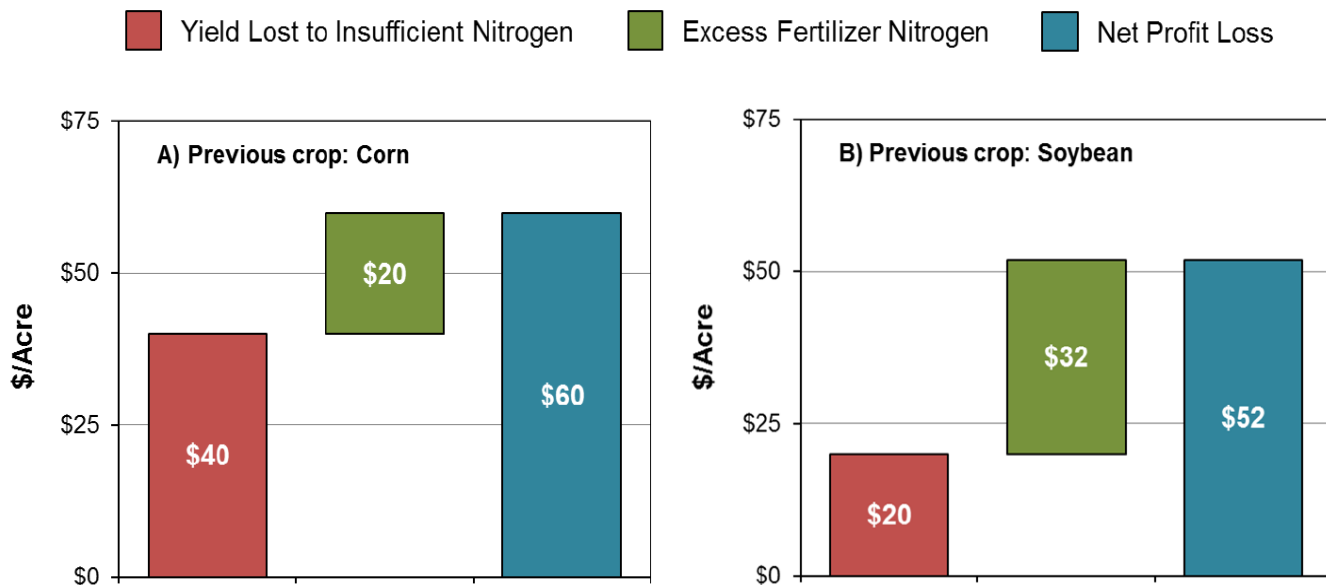
EXPLORE. EVOLVE. EXCEL.



Yield	170	175	180	185	190	195	200	205	210
Expense/Acre \$750	Cost/Bu \$4.41	\$4.29	\$4.17	\$4.05	\$3.95	\$3.85	\$3.75	\$3.66	\$3.57

Source: Profit Manager, 1999–2014 All Rights Reserved Ag View Solutions, LLC

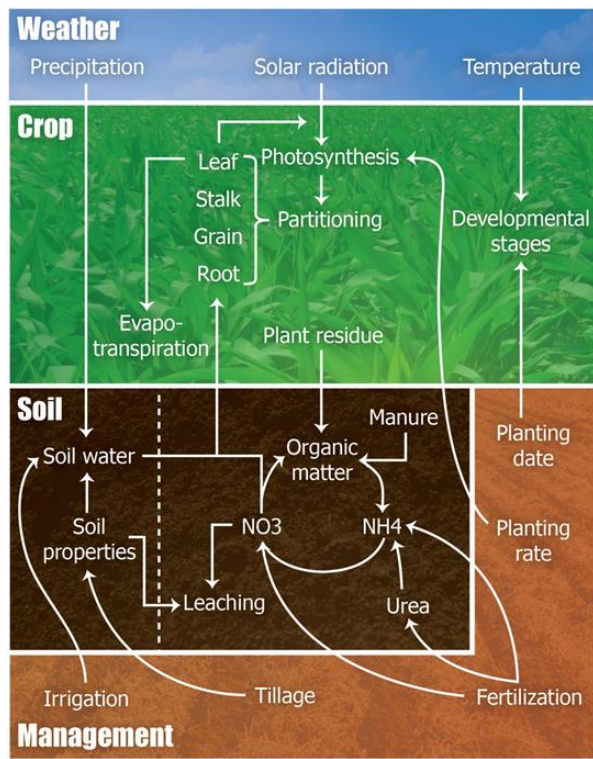
Estimated Profit Loss from Inefficient Nitrogen Management in the Corn Belt*



Profit lost from under and over applying nitrogen across years and soils

**Estimates are based on Monte Carlo simulations of economically optimum nitrogen rate response distributions from 1,168 University nitrogen response trials conducted in MN, IA, IL, IN and OH*

FOUR KEY INPUTS HELP ADVANTAGE THE ENCIRCA SERVICES NITROGEN MODEL



WEATHER



AGRONOMY



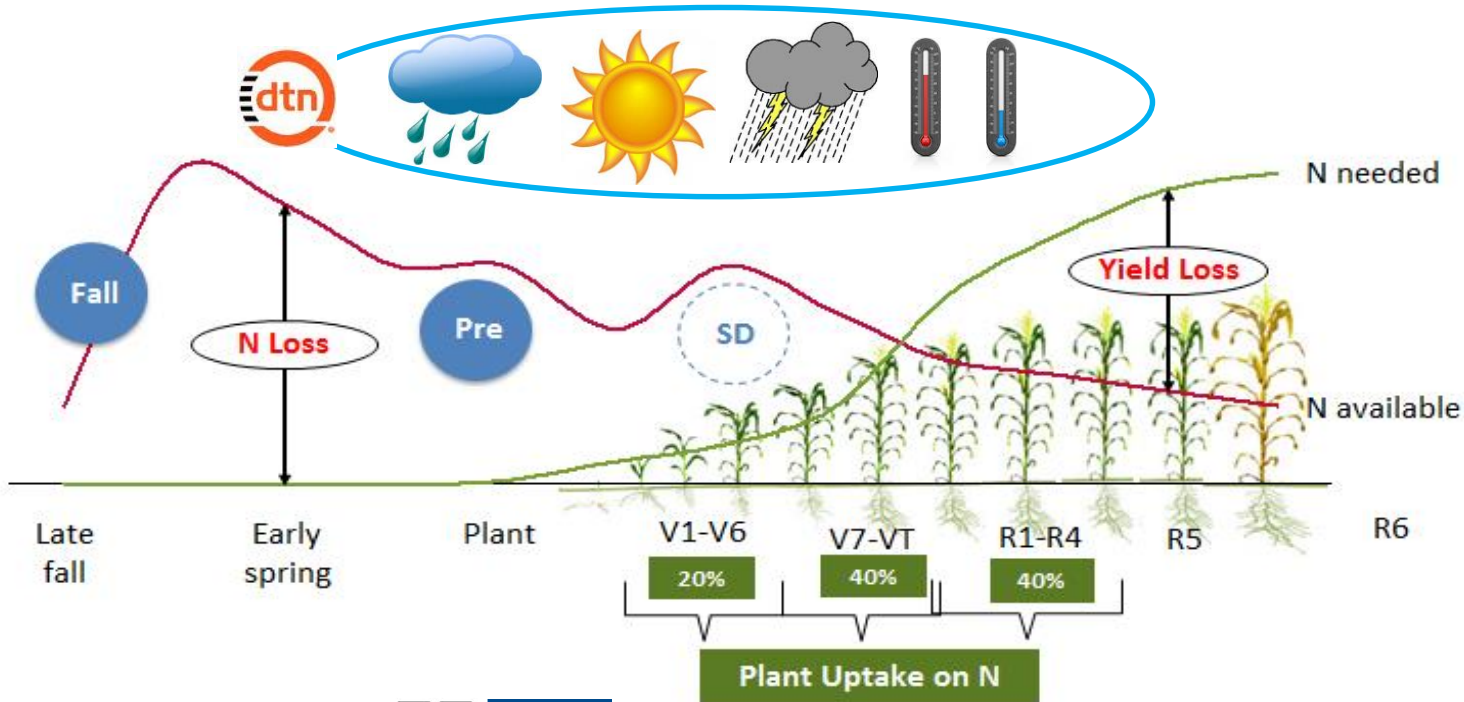
SOILS



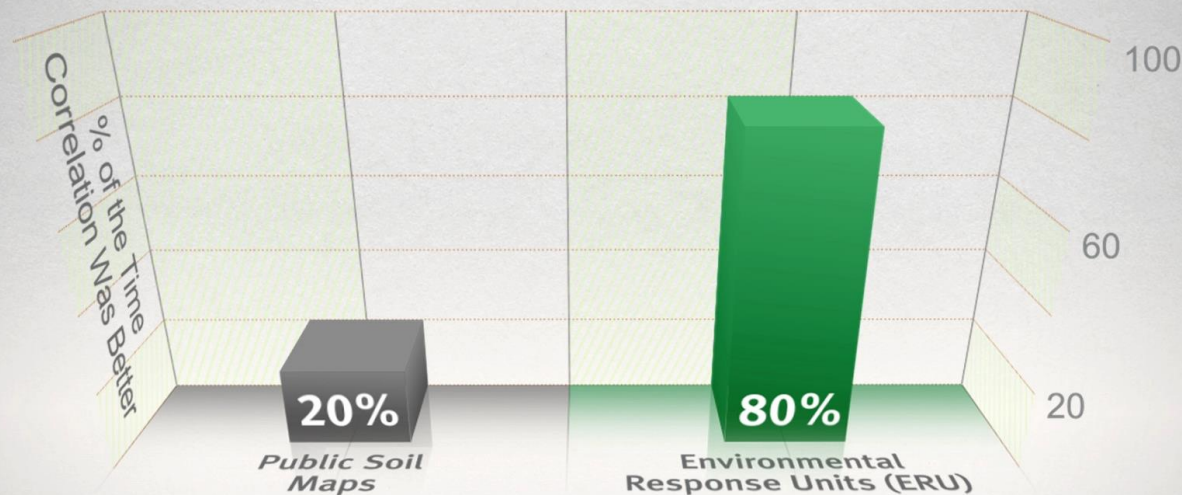
CUSTOMIZED

EVOLVE.

Nitrogen Management



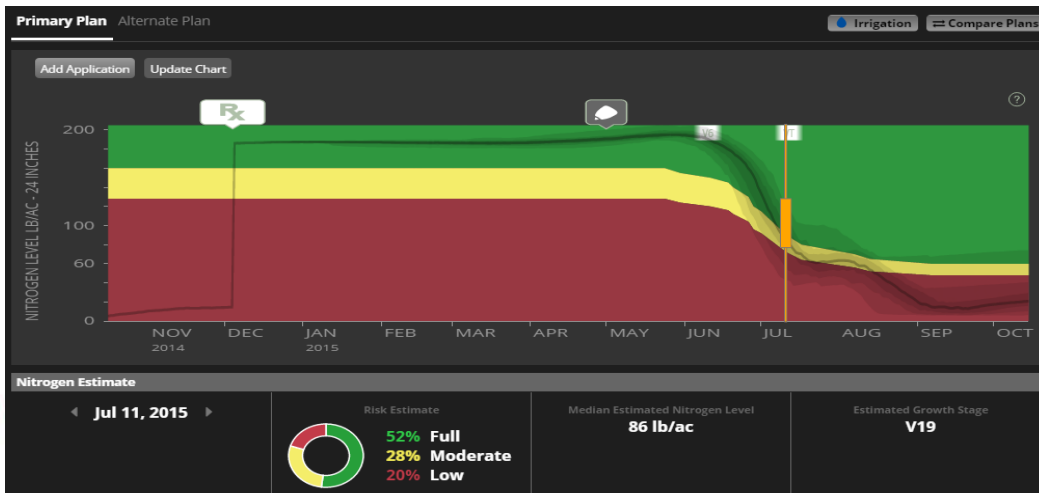
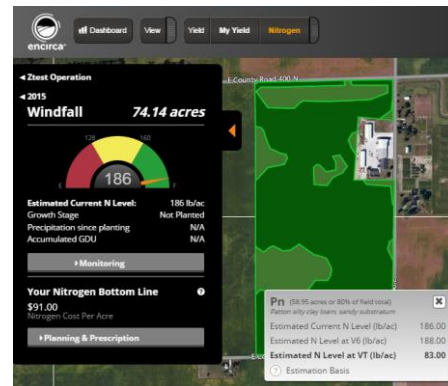
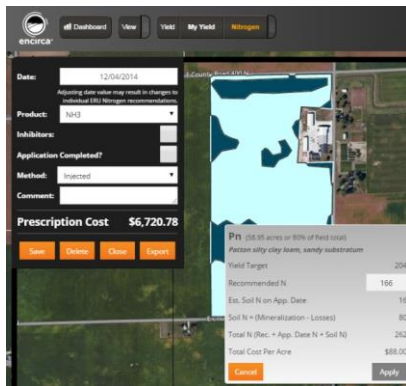
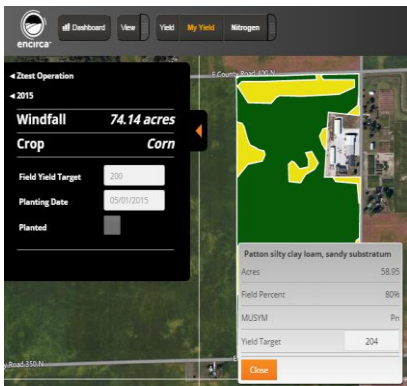
Better Representation of Corn Yields



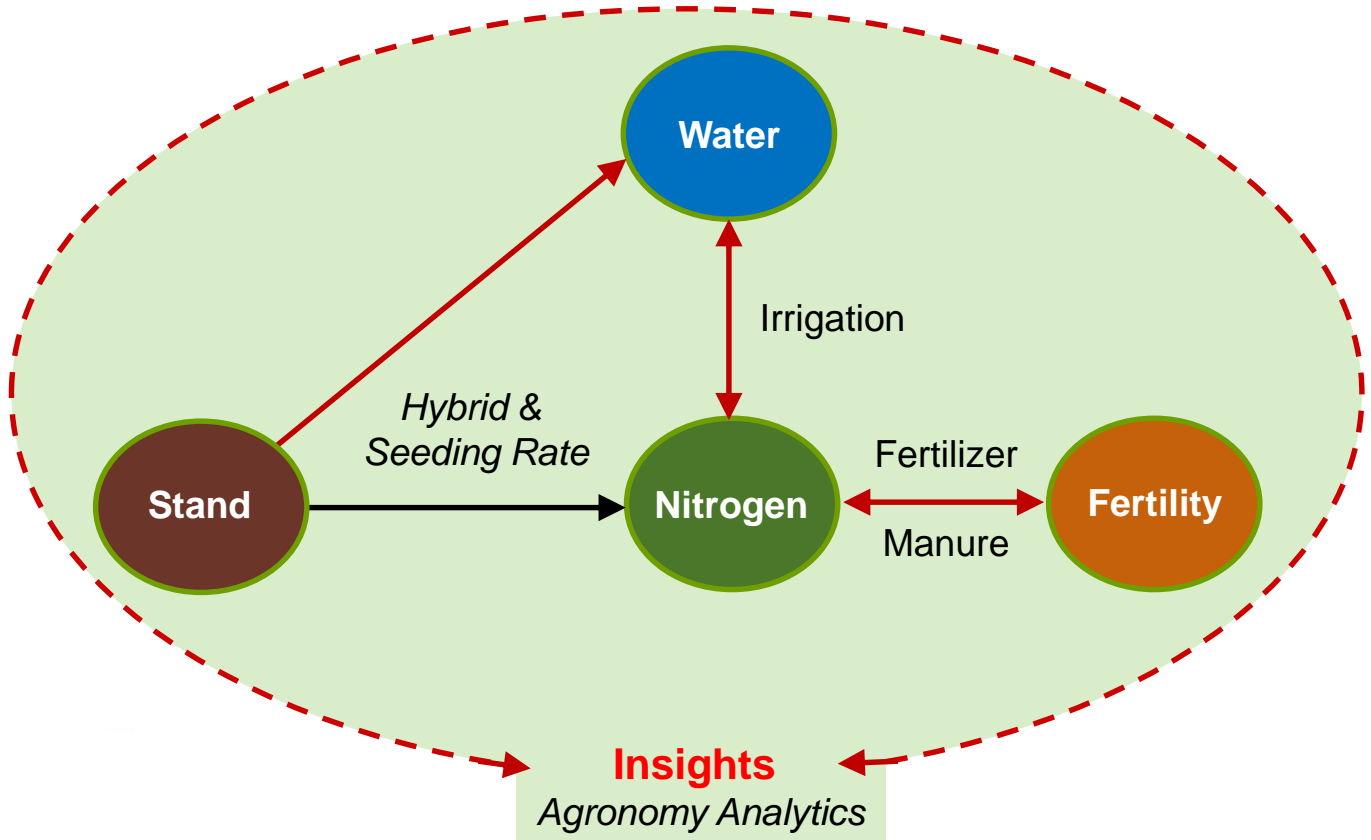
**Correlation to Actual Yield
Public Soil Maps vs. ERU**

Source: Natural Resources Conservation Service (NRCS) Soil Survey Geographic Database (SSURGO)

G x E x M (Management)



Integrated Services



Unprecedented Collaborations



Questions?



Thank you

EncircaSM services are provided subject to the terms and conditions of purchase which are part of the labeling and purchase documents. The DuPont Oval Logo is a registered trademark of DuPont.

[®], TM, SM Trademarks and service marks of Pioneer. © 2015 PHIL.