



TREEBALTIMORE

IMPROVING BALTIMORE CITY'S TREE CANOPY ONE
TREE AT A TIME...



BALTIMORE CITY
RECREATION & PARKS



WHO IS TREEBALTIMORE?



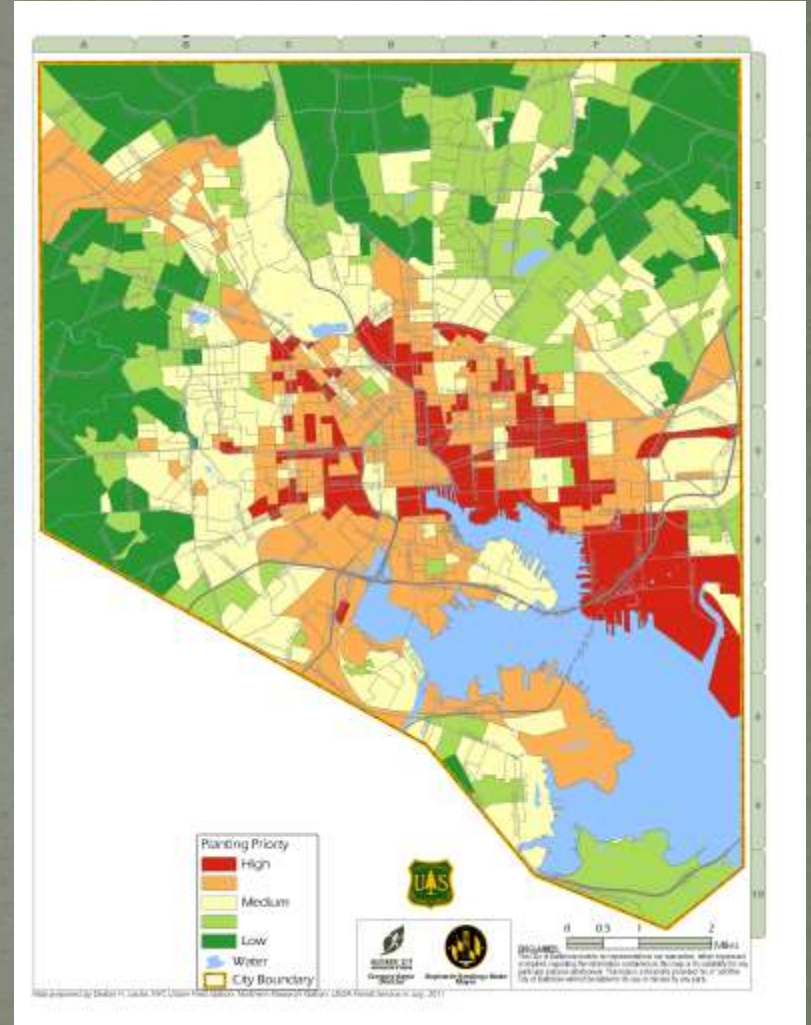
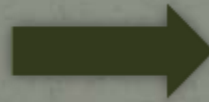
YOU!



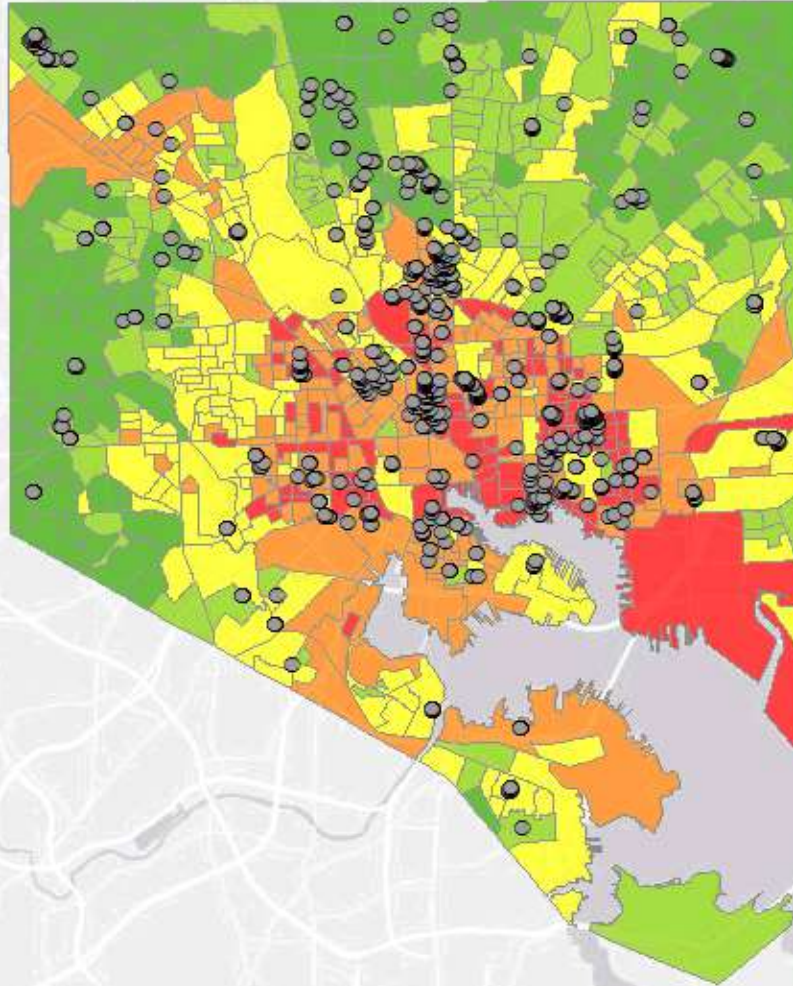
BALTIMORE CITY OVERVIEW

- 8-10,000 TREES PLANTED PER YEAR
 - MITIGATION PLANTINGS
 - PARTNER PLANTINGS
 - VOLUNTEER PLANTINGS
 - CONTRACTUAL PLANTINGS
 - PRIVATE PROPERTY GIVE AWAYS
- TREEBALTIMORE WORKING GROUP
 - PRIORITY PLANTING MAP
 - BI-ANNUAL MEETINGS
 - AVOIDING DUPLICATING EFFORTS
 - MAINTENANCE COMMITMENTS

UTC LEAD TO PRIORITY MAP

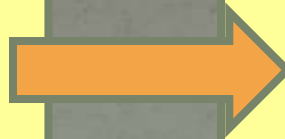


TARGETING PRIORITY NEIGHBORHOODS



GIS INVENTORYING TREE PLANTINGS

All Trees
Mapped
to Address



GPS Mapping
Individual Trees



PROGRAMS

- TREE PLANTINGS
- TREE GIVE AWAYS
- TREE UPS!
- TREEKEEPERS
- WEED WARRIORS



FUNDING

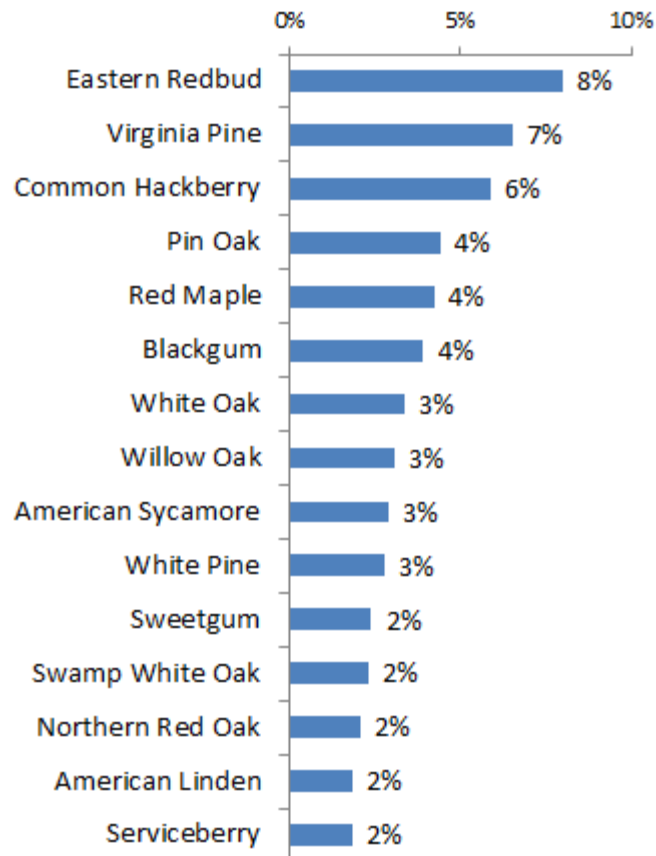
- SRUS – SCHOOL PLANTINGS
- C.R.E.A.T.E.S. (PSC)
- SOCIAL MARKETING (SALTER MITCHELL)
- ARBOR DAY FOUNDATION
- CONSTELLATION ENERGY
- CRITICAL AREA FUNDS
- CITY FUNDS



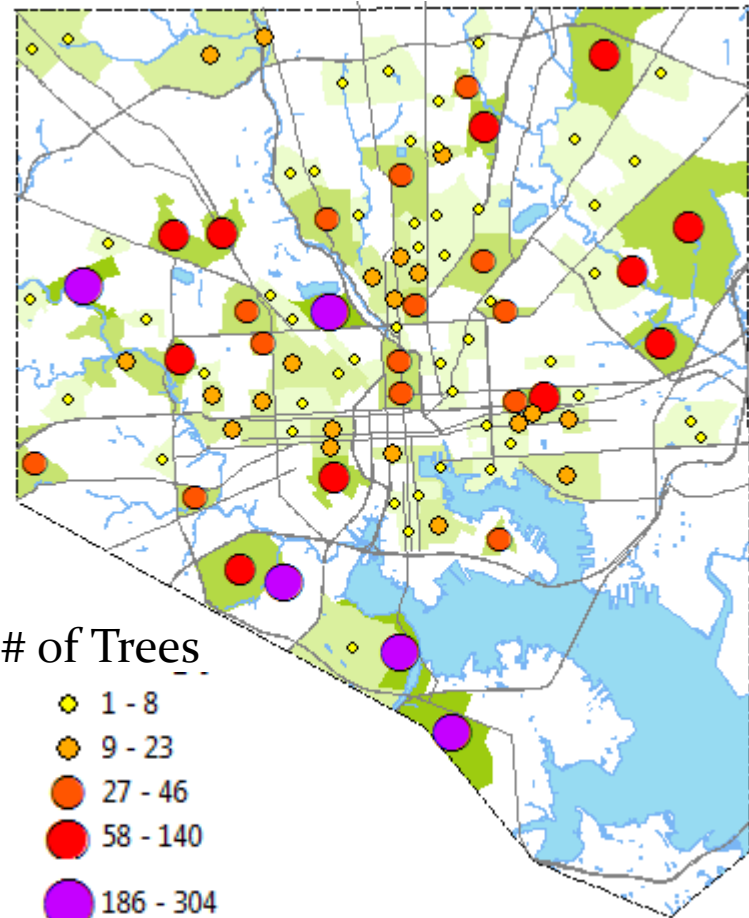
Spring 2014 – Reported Plantings

Total Trees Planted: 3,010

Top 15 Species Planted



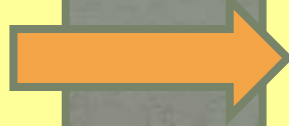
Trees Per Neighborhood



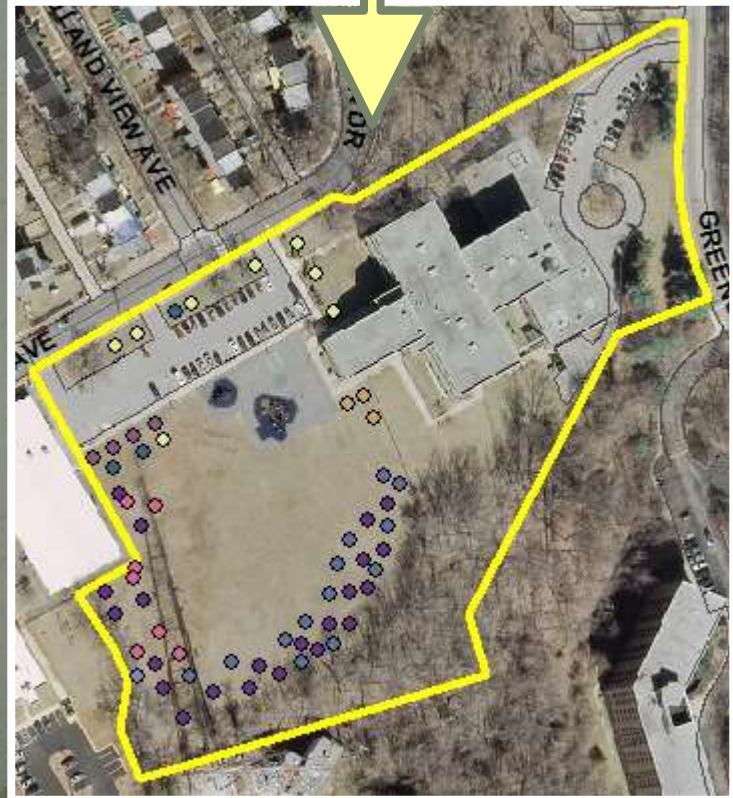
Based on addresses

Mapping Group Plantings

All Trees
Mapped
to Address



GPS Mapping
Individual Trees



EVENTS



AWARDS



OPEN FORUM

