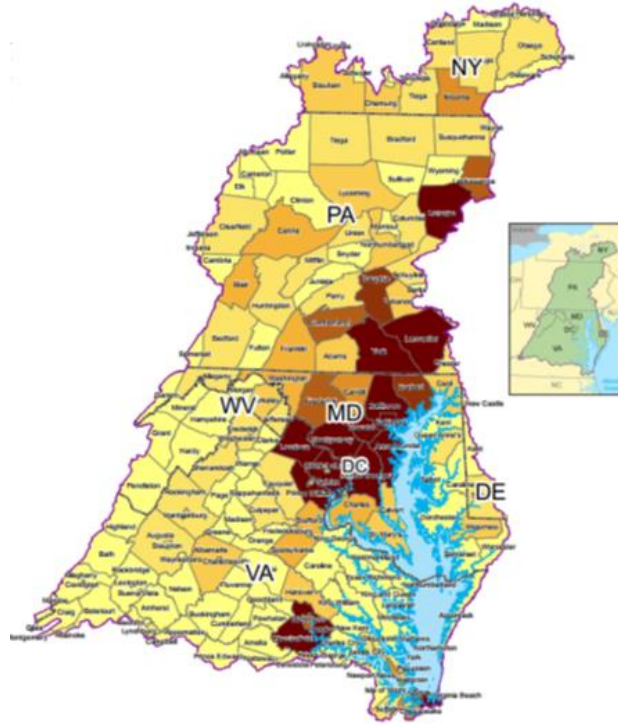


Chesapeake Urban Tree Canopy Summit

October 14 – 15, 2014

Maritime Institute of Technology & Graduate Studies
Linthicum Heights, MD



Today's Talk:

- TreeVitalize in Pennsylvania
- How are we working to meet CB UTC Goals?
- What are the challenges to UTC progress?
- What does success look like?



Community Tree Tenders[®]



Photo courtesy of Bel Arbor Tree Tenders

Community Tree Planting



Photo courtesy of PHS



Photo courtesy of Delaware andLehigh.org

Gateway Plantings



Photo courtesy of TreePittsburgh

Riparian Buffer Plantings



Impact of TreeVitalize

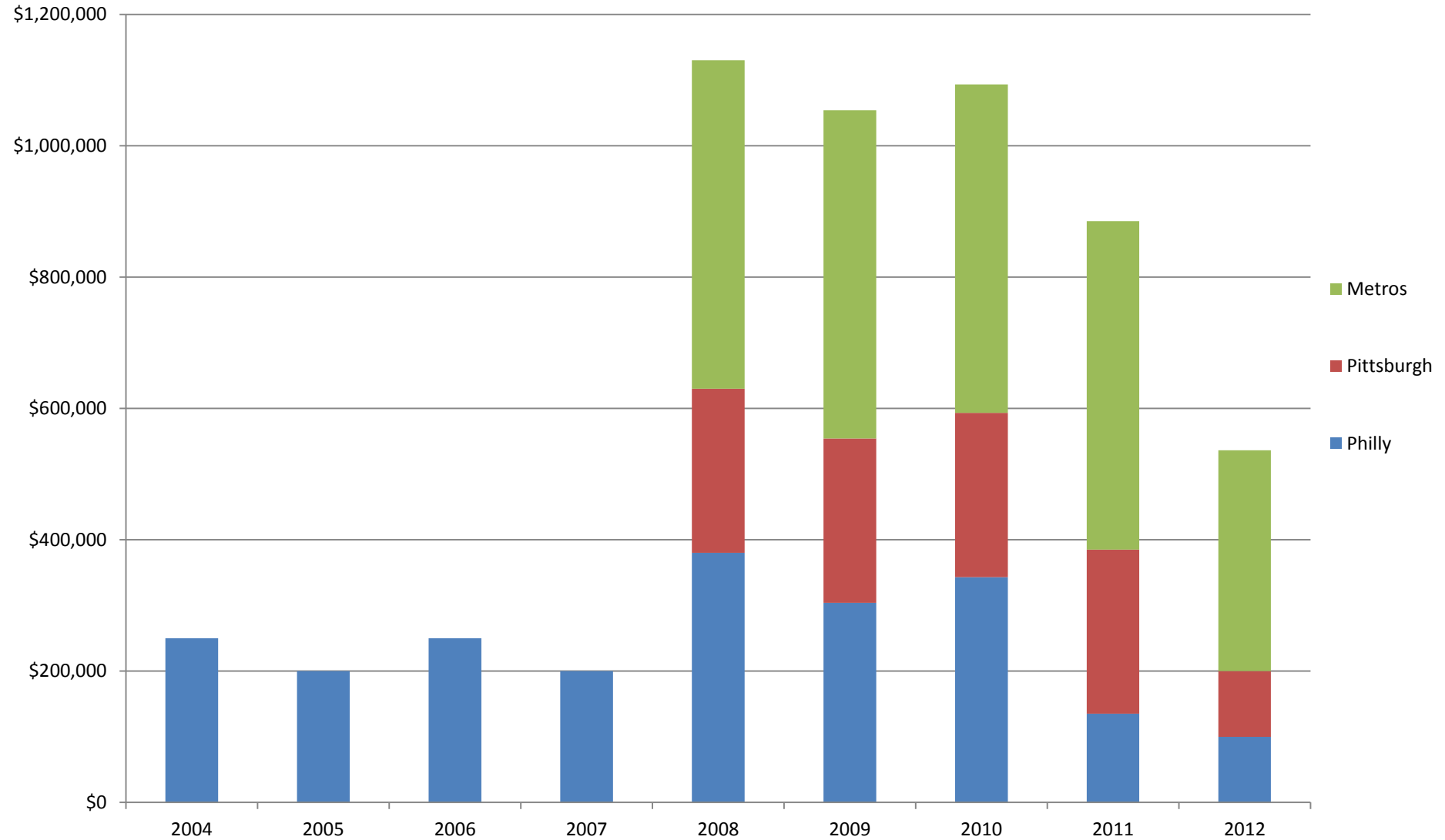
- Planted over 391,595 trees
- Trained over 6,000 Tree Tenders[®]
- Served over 504 communities



Photo courtesy of TreePittsburgh



State Funding-TreeVitalize



Staff

TreeVitalize is directed and administered through excellent, dedicated staff members at DCNR:



Ellen Roane, Urban
Forestry Coordinator



Christine Ticehurst,
Community Greening &
Grant Specialist



Christopher Peiffer, Tree
Canopy & Green
Infrastructure Specialist



Rachel Reyna, Section
Chief, Rural & Community
Forestry

The DCNR staff work closely with exceptional Urban Forestry staff at Penn State Cooperative Extension to successfully administer the program:



Vincent Cotrone, NE Region



Julianne Schieffer, SE Region



Scott Sjolander, NW Region

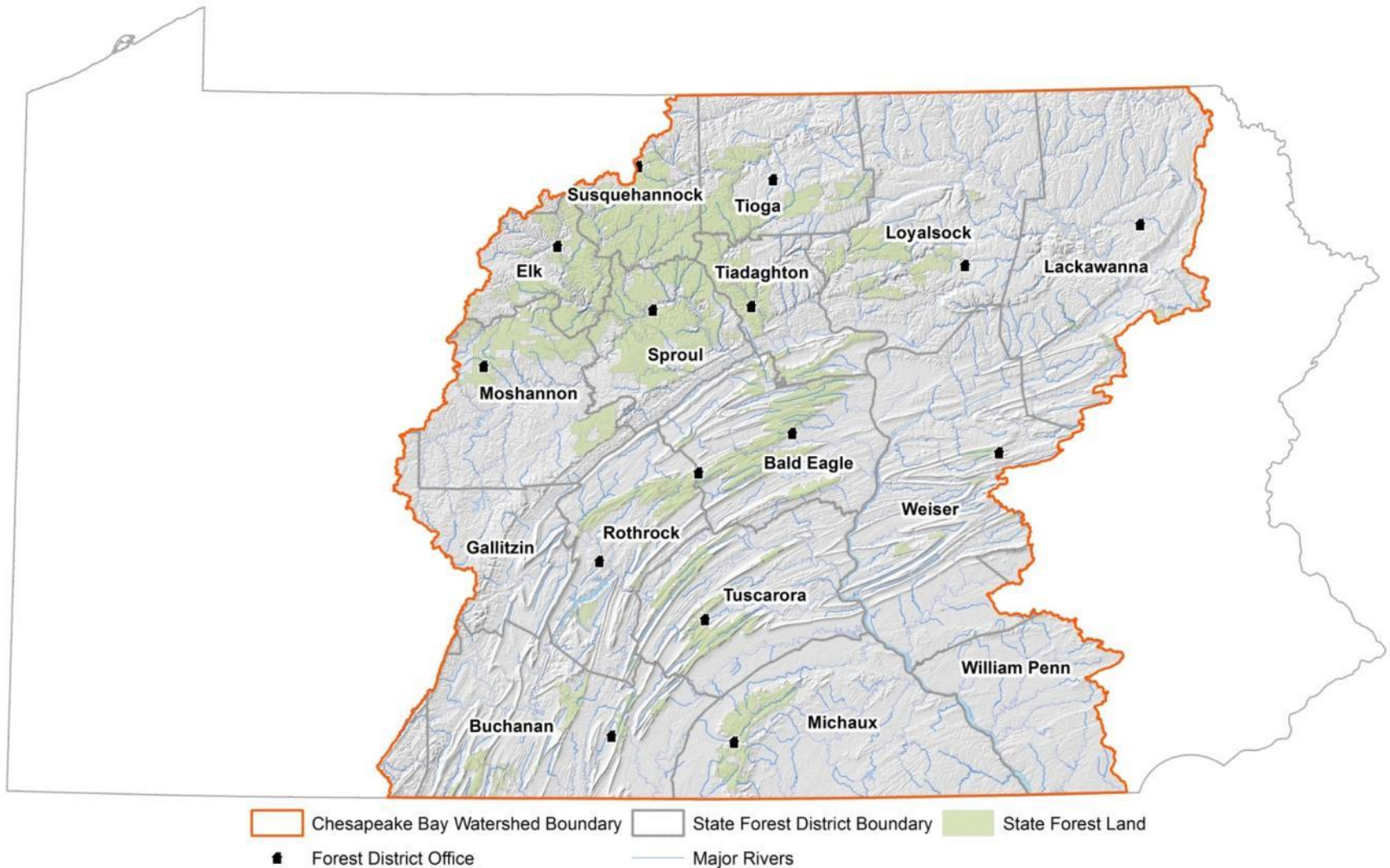


Brian Wolyniak, SW Region

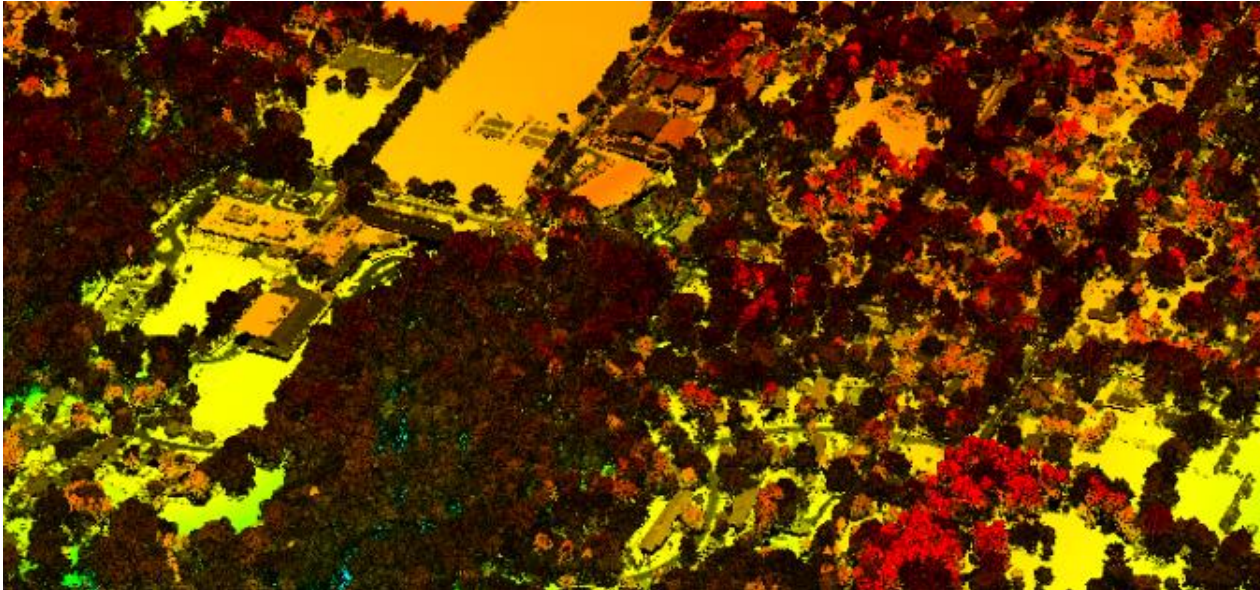


William Elmendorf, PdD
Associate Professor

50% of PA is located within the Bay Watershed



How are we working to meet CB UTC Goals?



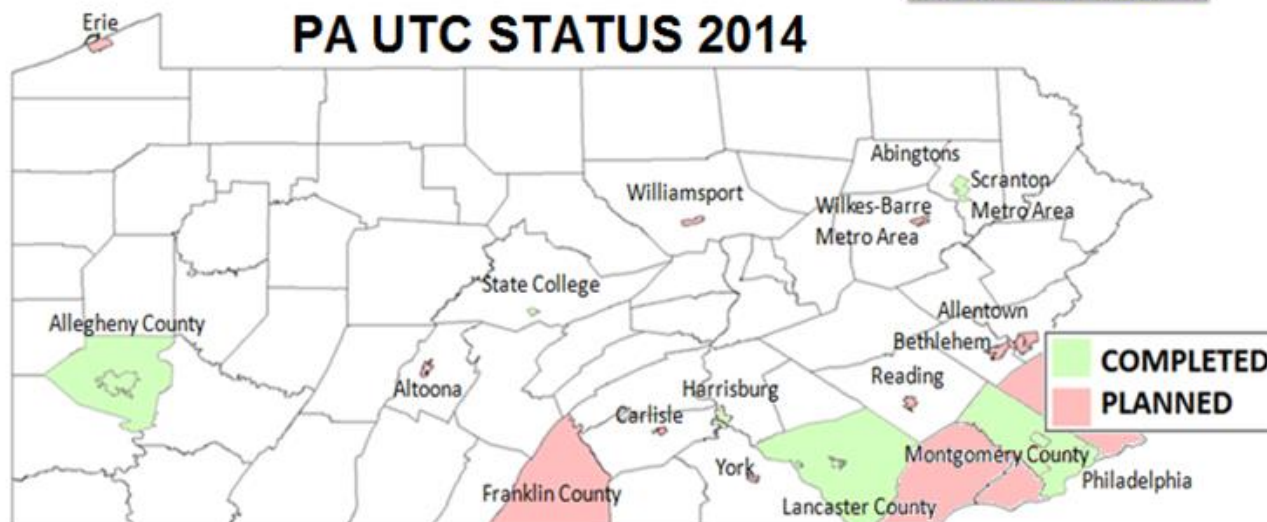
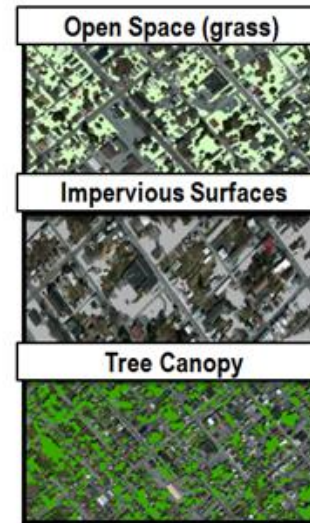
Urban Tree Canopy Assessments



Tree canopy assessments, formerly known as urban tree canopy assessments (UTC), use high resolution imagery to identify existing tree cover, prioritize potential planting sites, and monitor threats to canopy/ecosystems for a community or region.

With goals set and existing UTC known, practical and comprehensive planting and management plans can be established for communities. For more information visit <http://www.nrs.fs.fed.us/urban/utc/>.

The image below shows the completed and planned assessments for PA.



Pennsylvania UTC Status (Chesapeake Bay):

- 15 Completed Assessments
- 4 In Process / Planned

Assessed Area	City/County	Assessment Status
Altoona	city/town	In Process/ Planned
Clarks Green	city/town	Complete
Clarks Summit	city/town	Complete
Columbia Borough	city/town	Complete
East Hempfield Borough	city/town	Complete
Franklin County	county	In Process/ Planned
Harrisburg/Carlisle Metro Area	metro area	Complete
Lancaster City	city	Complete
Lancaster County	county	Complete
Manheim Borough	city/town	Complete
Penn Township	city/town	Complete
Rapho Township	city/town	Complete
Scranton Metro Area	metro area	Complete
South Abington	city/town	Complete
State College	city/town	Complete
Warwick Township	city/town	Complete
Waverly (Abington)	city/town	Complete
Wilkes-Barre Metro	metro area	In Process/ Planned
Williamsport	city/town	In Process/ Planned
York	city/town	In Process/ Planned

PennTreeMap



Community
FORESTS



pennsylvania
DEPARTMENT OF CONSERVATION
AND NATURAL RESOURCES
www.dcnr.state.pa.us



amec



RESOURCES FIRST FOUNDATION
Private Sector Solutions for the Environment

Whether you live in a community with tree canopy assessment or not, PennTreeMap, “An interactive tool for your community forest” can help you find, track, promote, plan, and talk trees.

Find how much tree and impervious cover is on your place of interest.

Track the trees you plant by adding them to the interactive map.

Promote your community forest by calculating the ecosystem services of trees you’ve planted.

Plan your urban forest by prioritizing tree planting/protection areas and setting canopy goals.

Talk to communities about goal setting and gain information for a sustainable community forest.

Stay tuned for the web link and upcoming webinars explaining how to use PennTreeMap to benefit your community forest!

Find.

Tree Canopy Assessment Data



pennsylvania

DEPARTMENT OF CONSERVATION
AND NATURAL RESOURCES

www.dcnr.state.pa.us

Register | Login

Home **Tree Map** Communities

Tree Map



Map Locations

More... Streets Aerial Topo

UTC

Opaque Transparent

0% 50% 100%

Zoom to

Transparency

Move up

Move down

Description

Parcels

Plantable Vegetative Percent

Plantable Vegetative Area

Print

Title

Subtitle

- Add attributes to trees planted or inventoried
- Searchable tree data by attribute

Search for species

(Example: Acer rubrum or Red maple)

Location

(Street Address)

near Tree ID

Show advanced filters ▼

Species

Diameter 0 – 50"

Height 0 – 200'

Plant Date 1950-2012

Plot Size 0 – 15+"

Characteristics

Flowering
 Fall color
 Edible
 Native

Powerlines
 Yes
 No

CSS or MS4

CSS
 MS4

Condition
 Excellent
 Good
 Fair
 Poor

Project Trees

Yes
 No

Plot Type
 Island
 Median
 Tree Pit
 Other

Missing Data

Species
 Trunk Diameter
 Condition
 Other

Age
 New
 Established

Tree Steward

Tree Entered By

Last Updated By

Sponsor or Grant?

(Style and attributes not exact)

Promote.

- Discover how individual trees or the entire community forest is benefiting you and your community!

Yearly Eco Impact

Summary or select a tree



Total Benefits

\$1,601 saved



Water Benefits

52,748 gallons conserved
\$210 saved



Energy Benefits

4,636 kWh conserved
\$909 saved



Air Quality Benefits

27 lbs pollutants reduced
\$234 saved

Most Common Trees

Red Maple >

3450

Norway Maple >

2712

American Sycamore >

2213

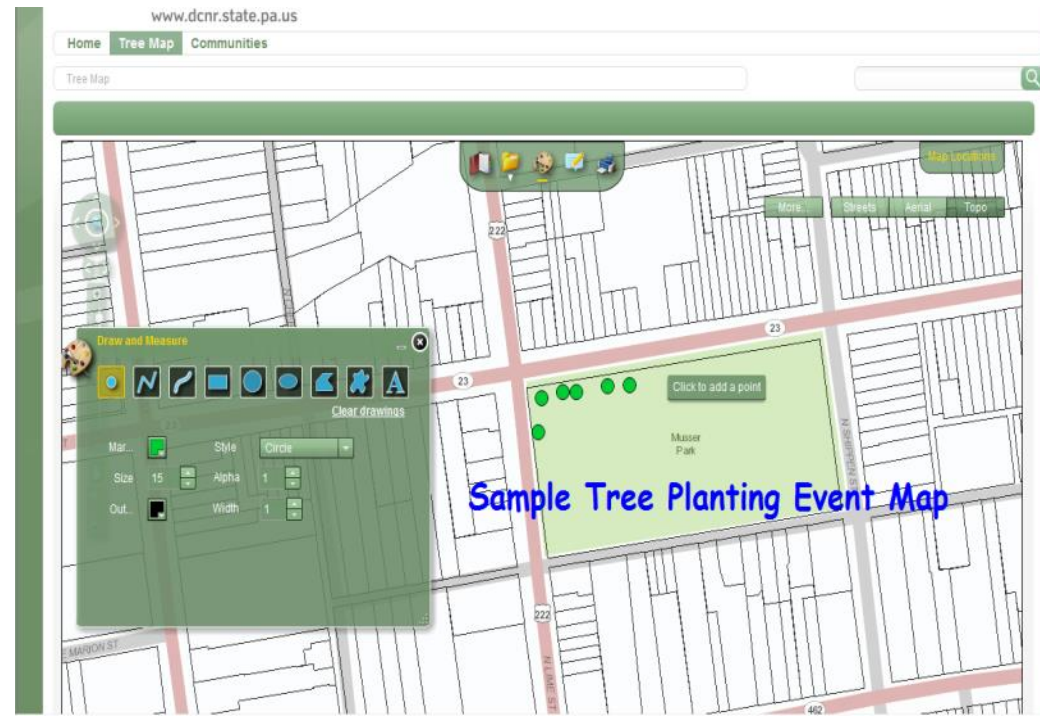
Northern Red Oak >

1893

(i-Tree Design values used)

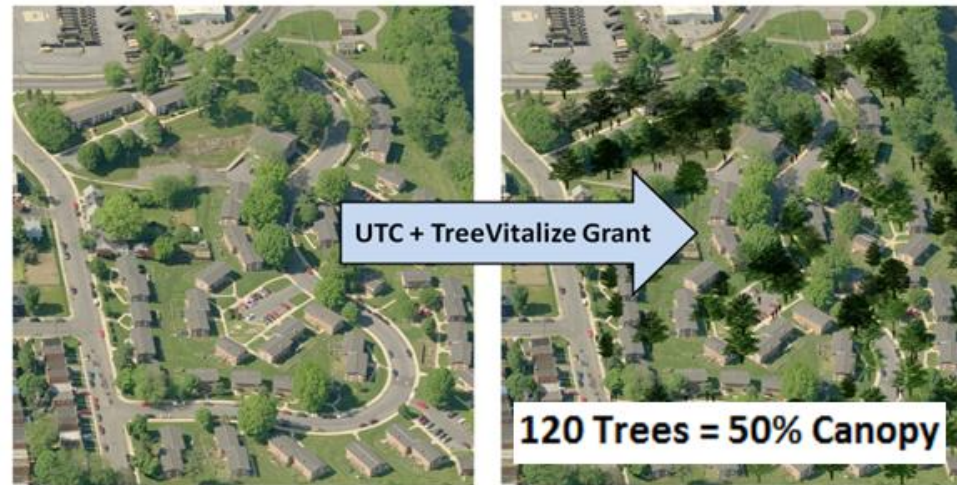
Plan.

- Develop a planting plan
- Determine how many trees are needed to reach a desired benefit or canopy cover
- Download the data and map



Canopy and Benefits Calculator Applied to Communities for Grants

Communities who have a tree canopy assessment can use the tools and data provided to prioritize planting locations and calculate the future benefits of the increased canopy. This information has become valuable to communities applying for tree planting and community development grants.



20,500 kWh Saved!



400,000 gal Reduced!



65,000 lbs CO₂ Absorbed!



\$17,500 in Benefits!

Challenges to UTC Progress

- Continued Funding
- Communicating Success
- Prioritizing
- Capacity
- Ongoing Updates
- Tree Removals = Decreased Tree Canopy
- Maintenance of Trees

What Success Looks Like



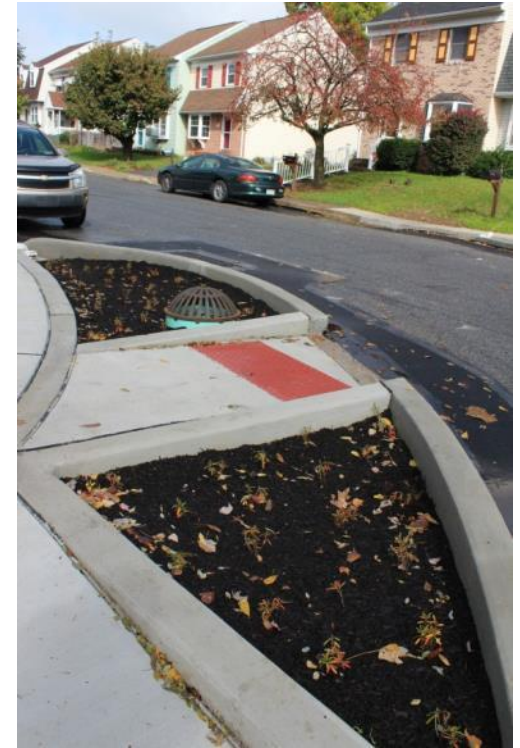
Marty Heisey

Trees form a canopy over State Street on Tuesday afternoon in Lancaster. (Marty Heisey / Staff)



- Lancaster, PA
 - Trees are valued by community leaders & citizens
 - Green Infrastructure Plan

Lancaster's GI Implementation



Thank You!



Christine Ticehurst
Pennsylvania Department of Conservation & Natural Resources
Bureau of Forestry
Community Greening & Grant Administration Specialist

717-346-9583
c-cticehur@pa.gov