

Technical Support Lancaster County & Beyond

CHESAPEAKE BAY AGRICULTURE WORKGROUP

6/20/18

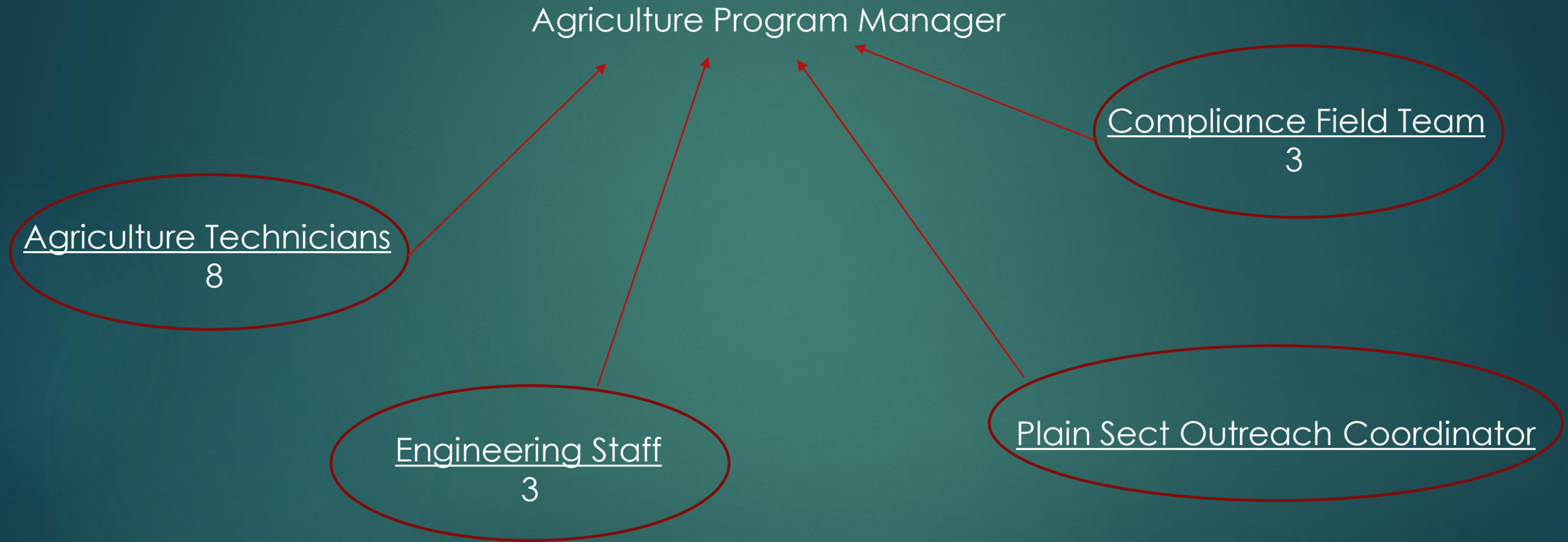


Quick District Background

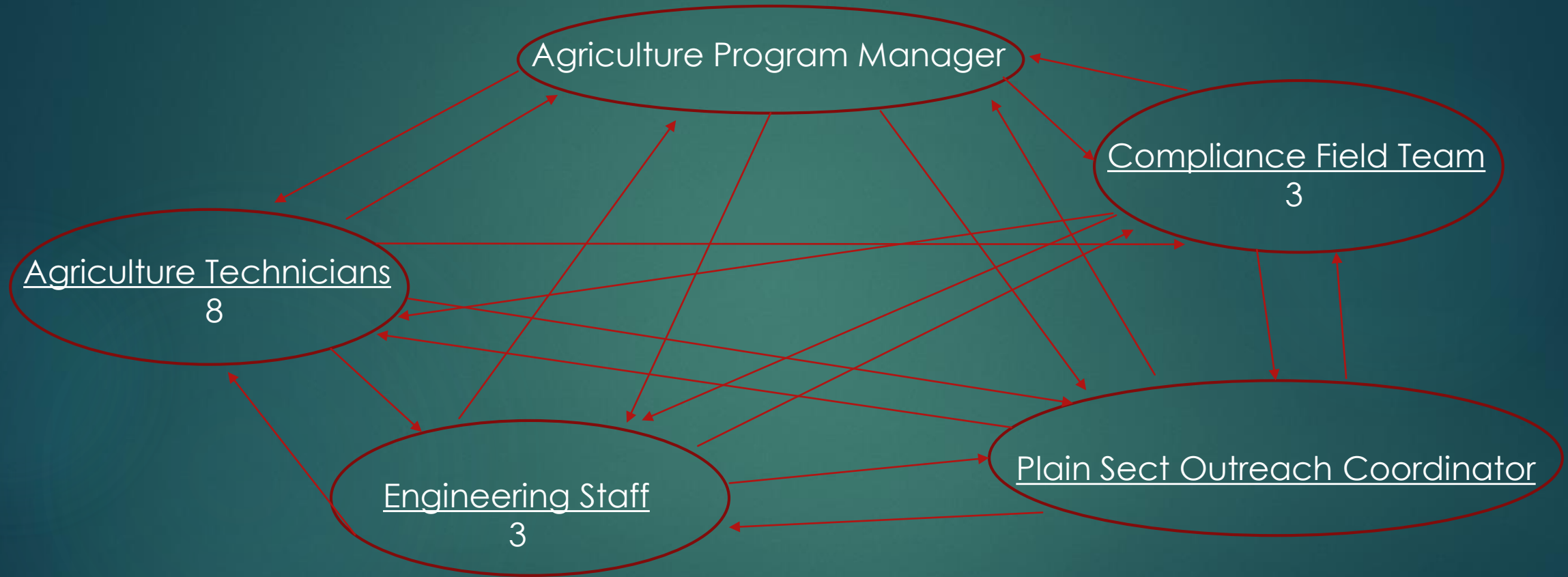
- ▶ Lancaster County Conservation District
 - ▶ Maintains a staff of between 30-32 employees
 - ▶ Largest in the state
 - ▶ Co-located with the NRCS
 - ▶ Funding Sources from
 - ▶ Federal, State, County, Grants
 - ▶ 3 Main Programs
 - ▶ Agriculture
 - ▶ Erosion & Sedimentation
 - ▶ Education & Outreach & Watersheds



Agriculture Program Break-Down



Agriculture Program Break-Down



Before We Start.....

- ▶ Quick Lancaster facts:
- ▶ The county has 5,657 total farm operations
 - ▶ PA has ~59,309 total (10%)
- ▶ 5,458 have animals present on the operation (96%)
- ▶ Average farm size 60-70 ac.



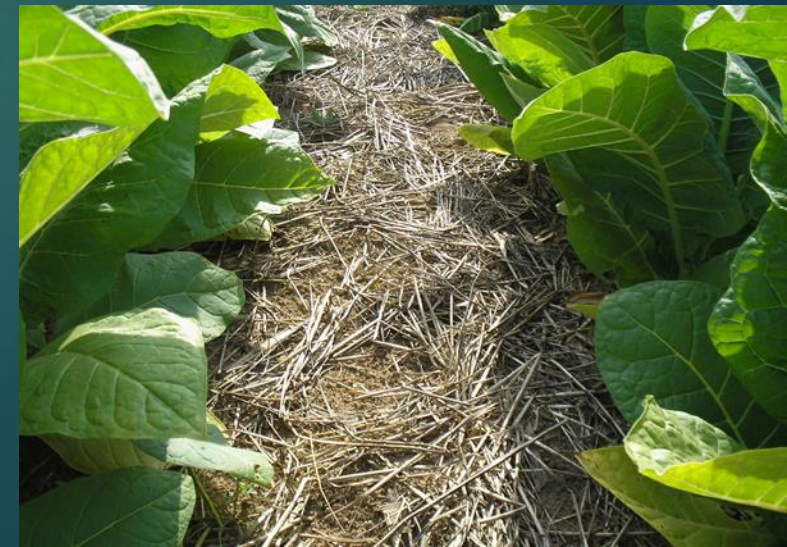
Agriculture Support

- ▶ What do we do?
 - ▶ Oversee the Act 38 Nutrient Management Program (CAO's)
 - ▶ Includes plan review and approvals (roughly 85/yr.)
 - ▶ Yearly status reviews
 - ▶ ~275/year
 - ▶ ~113 are CAFO/CAO's (the largest of the largest)
 - ▶ ~162 CAO (Act 38)
 - ▶ Comparison
 - ▶ Next largest county
 - ▶ Lebanon w/ ~ 87 CAO's



Local Agriculture Support

- ▶ Conservation(Ag E&S) Planning
 - ▶ 3 NRCS certified Conservation Planners
 - ▶ All 8 technicians are trained to develop plans
 - ▶ Since 2006 district has developed over 67,000 acres(can be updates)
 - ▶ Does not include NRCS, private consultant acreage



Local Agriculture Support

- ▶ BMP Design & Implementation
 - ▶ All 8 technicians are trained for BMP implementation
 - ▶ District does have an Engineer on staff
 - ▶ With 2 engineering specialists
 - ▶ Gives the ability to review/approve in-house design work, which speeds up the process



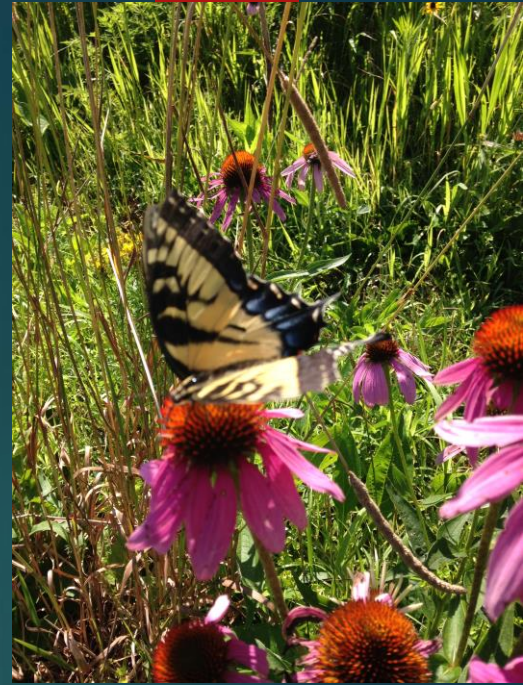
Local Agriculture Support

- ▶ BMP Design & Implementation
 - ▶ Since 2011 (updated recording system)
 - ▶ LCCD has been a part of:
 - ▶ > 1,000 designed BMP's
 - ▶ > 1,700 implemented BMP's
 - ▶ Ranges from agronomic to structural



Local Agriculture Support

- ▶ Fan favorite: Agriculture Compliance
 - ▶ Since September 2016
 - ▶ LCCD has completed 600 compliance checks
 - ▶ Achieved 95% compliance (5% referral to DEP)
 - ▶ District assists with Manure Mgmt. Plan
 - ▶ Private consultant develops Conservation Plan



Statewide Agriculture Support

- ▶ Many districts have the same roles and responsibilities

- ▶ Just not the same workload

- ▶ Just not the same staffing

- ▶ 1 field technician

- ▶ Maybe only ½ FTE

- ▶ Uses other funding to support



Statewide Agriculture Support

- ▶ Take home points
 - ▶ **NOT AS MANY ANIMALS!**
 - ▶ Not as much manure
 - ▶ Soil Test---→ Low Phosphorus
- ▶ A lot more naturally buffered streams
 - ▶ Legitimate pastures & pasture mgmt.
 - ▶ More grass



Statewide Agriculture Support

- ▶ Implementation of BMP's
 - ▶ Potentially using 2 or 3 different funding sources
 - ▶ More inventive ideas (farmer input)

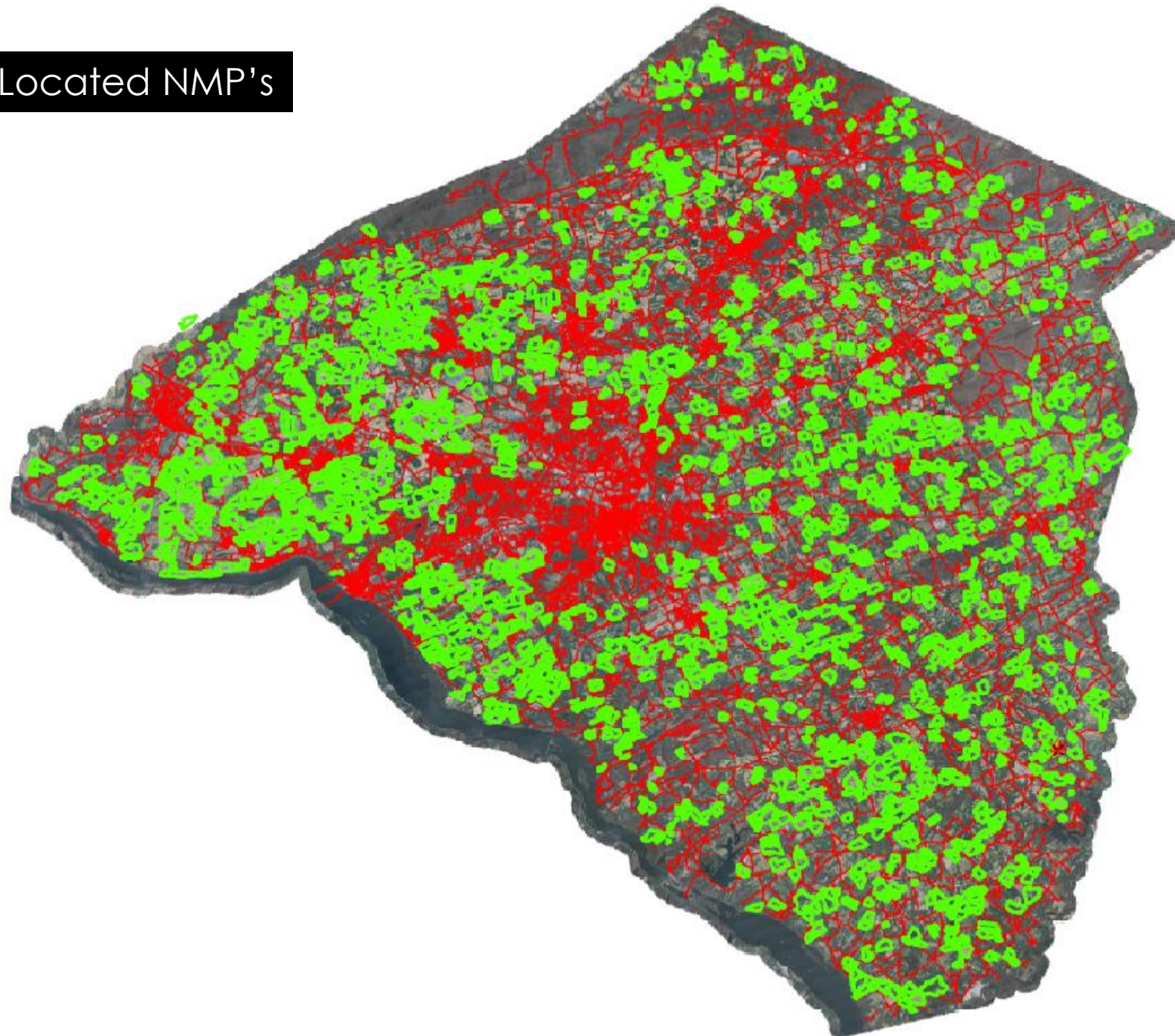


Statewide Agriculture Support

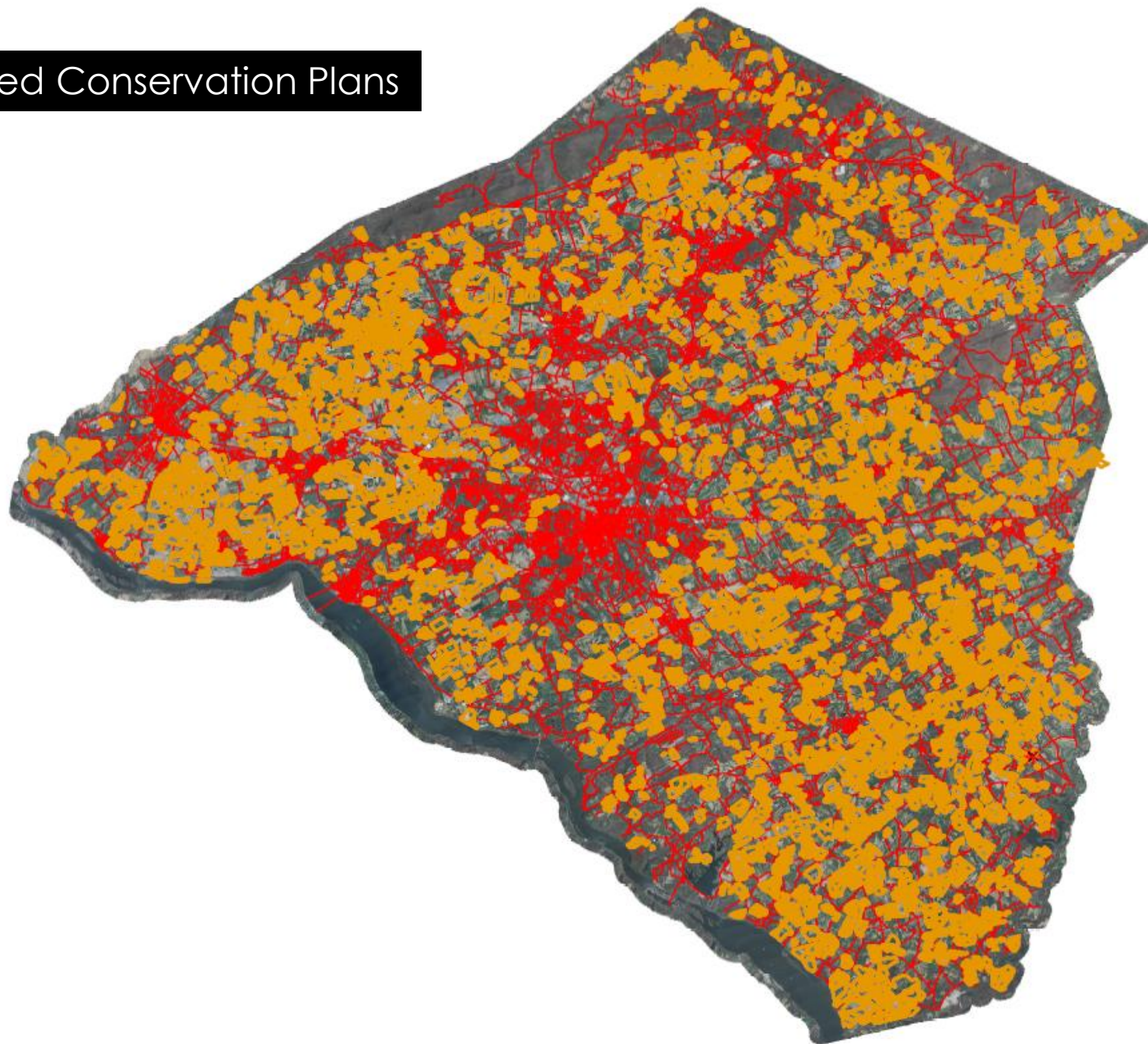
- ▶ Introduction of PracticeKeeper Software
 - ▶ Centralized database; eventually all districts
 - ▶ The ability to see exactly what's going
 - ▶ Reporting correctly
 - ▶ BMP's reported in exact watershed
 - ▶ Better information for grant writing
 - ▶ Eventually open to the private sector?

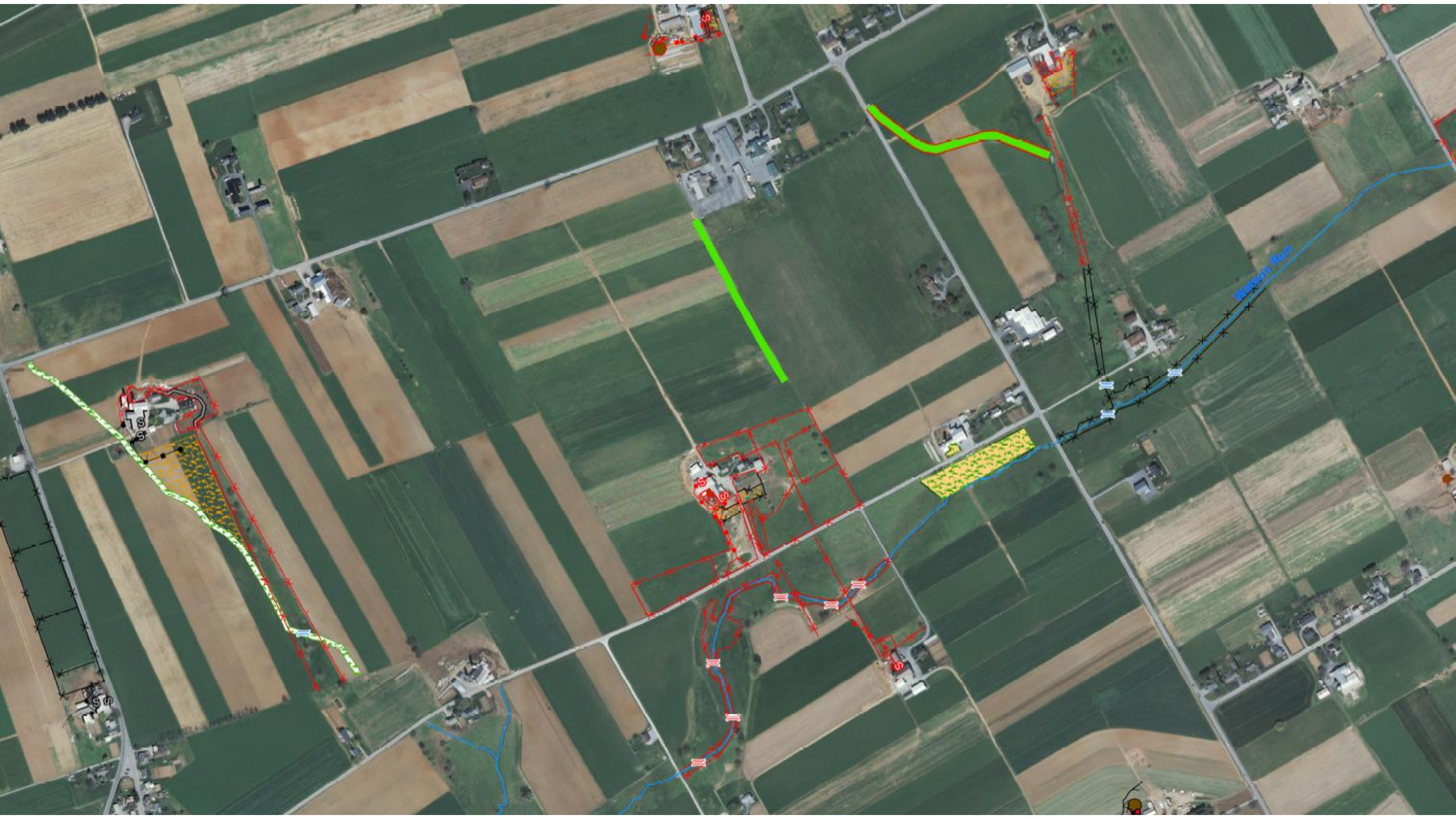


Parcel Located NMP's



Parcel Located Conservation Plans









The End

QUESTIONS?