

# Chesapeake and Atlantic Coastal Bays Trust Fund

July 14, 2014

WQGIT Presentation

*Presented by:*

**Gabe Cohee, EFC @ MDDNR**




*“**The Bay Trust Fund** represents a significant change in our approach to Bay restoration. It will require a large degree of coordination between state agencies, and between the state and local governments. This new and **innovative** approach will **leverage** our resources to the greatest extent possible, **focus** the funds to the most cost effective locations and practices, **engage** the community at large and hold everyone **accountable**. We will continually review and **adapt** our approach as we learn from our experiences.”*

*Governor Martin O'Malley*



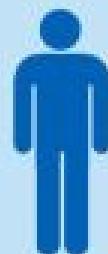
## Impact Report (FY09 – FY14)

 removed to-date:

2.2 million lbs Nitrogen

243,522 lbs Phosphorus

17,527 tons Total Suspended Solids



engaged:

32,190 students engaged in restoration



employed:

885 direct and indirect jobs supported



restored:

1180 acres of forest planted on State land

312 acres of wetlands restored

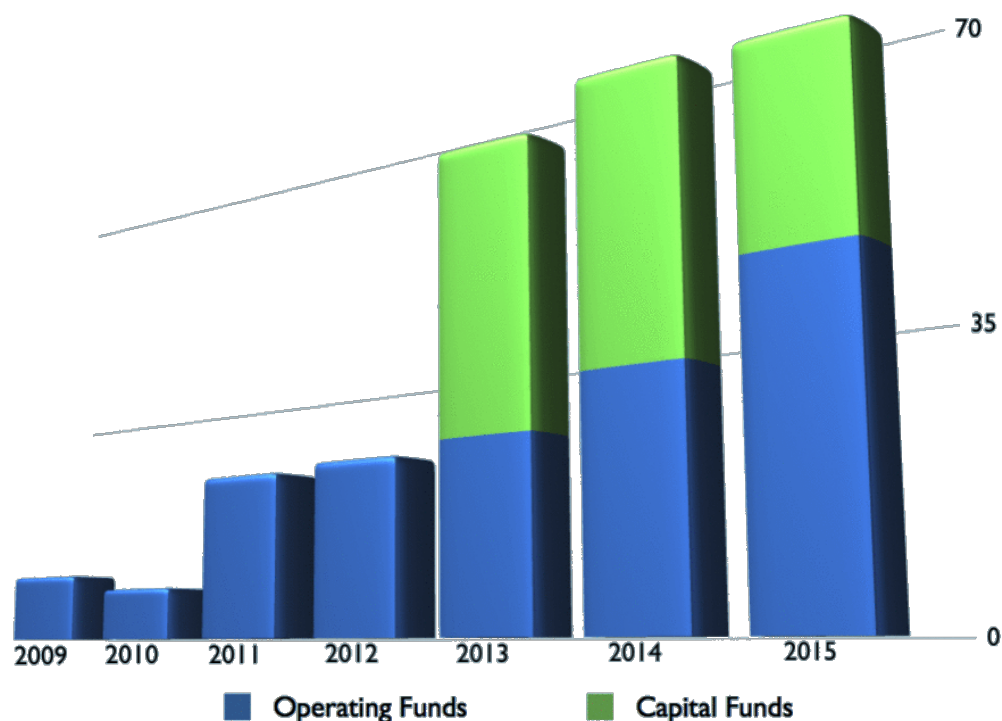


## Structure & Oversight

- Funds generated through motor fuel tax and rental car tax in Maryland
- Allocation, targeting, and implementation is a collaborative effort between three partners:
  - BayStat Agencies (DNR, MDA, MDE, MDP, UMD)
  - Scientific Advisory Panel (3<sup>rd</sup> party scientists)
  - The Legislature



## Funding at a Glance



- 640% Growth since FY09
- Governor directed Capital funds in FY13 – nearly \$100M additional in three years.
- When fully funded, anticipate \$50M annually

# Trust Fund BMP Targeting

Sarah Lane

UMCES/DNR

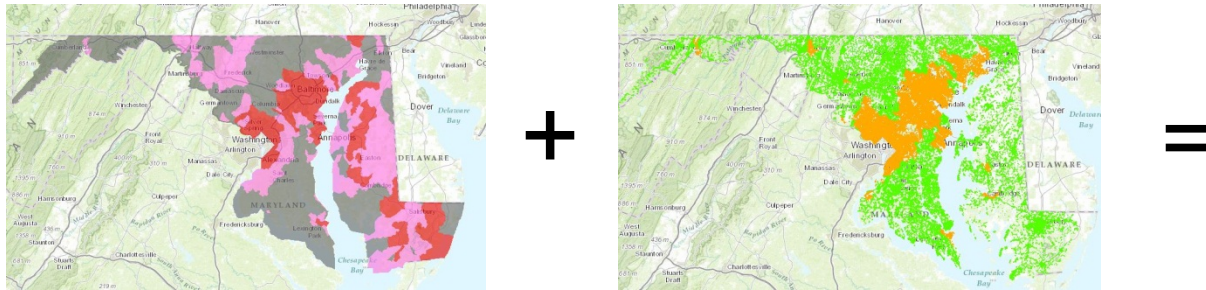
[slane@dnr.state.md.us](mailto:slane@dnr.state.md.us)

[http://www.dnr.maryland.gov/ccs/funding/trust\\_fund.asp](http://www.dnr.maryland.gov/ccs/funding/trust_fund.asp)

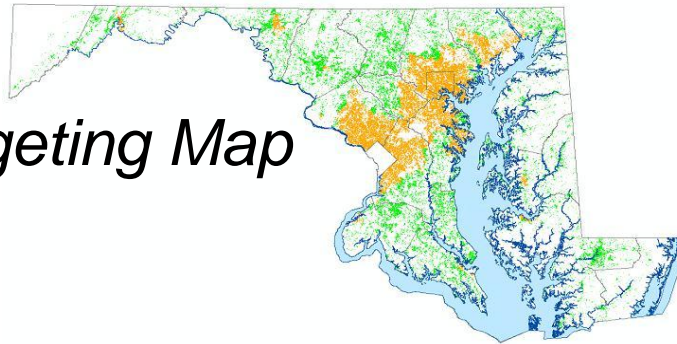




Targeting maps were created using an intersection of the SPARROW model delivered loads and the 2010 Maryland Department of Planning land use and land cover data.



*RFP Targeting Map*



# Future Targeting

- Scientific Advisory Panel to reconsider targeting using new data.
  - More refined landuse characterizations
  - BMP specific targeting instead of sector specific
  - Climate Change Impacts





# Maryland Innovative Technology Fund

Sarah Lane

UMCES/DNR

[sarah.lane@maryland.gov](mailto:sarah.lane@maryland.gov)

[www.dnr.maryland.gov/ccp/intechfund.asp](http://www.dnr.maryland.gov/ccp/intechfund.asp)



Administered under the Trust Fund, the  
**Innovative Technology Fund...**

\$1.3 Million invested

20 MD based companies

21 technologies

\$2.05 Million in Company Match



# Structure: Two Branches

## Fostering Collaboration and Leveraging Resources

- Research and Development with MIPS
  - Company cash match
  - Money to University researcher
- Seed Capital Fund with MTech
  - State becomes a benign shareholder



# Conclusion

By supporting innovation, the State demonstrates their commitment to investing in technology as a way to **improve efficiency and maximize return on investment...**

The Innovative Technology Fund is one of the tools Maryland will use to **meet the TMDL...**

**SO WE HAVE MORE  
CRABS TO EAT!**



# Watershed Assistance Collaborative

Phillip Stafford, MD DNR  
[phillip.stafford@maryland.gov](mailto:phillip.stafford@maryland.gov)

[www.dnr.state.md.us/ccs/healthy\\_waters/wac.asp](http://www.dnr.state.md.us/ccs/healthy_waters/wac.asp)



# Goals

- Improve Capacity
- Technical Training
- Connect to Funding Sources
- Establish Long Term Funding





## Partners

- Environmental Finance Center
- Chesapeake Bay Trust
- University of Maryland Extension SeaGrant
- DNR Coastal Training Program



# Sea Grant

University of Maryland Extension

- Community Outreach
- Capacity Building
- SMART Tool



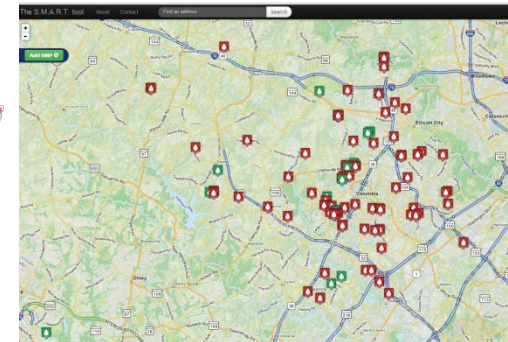
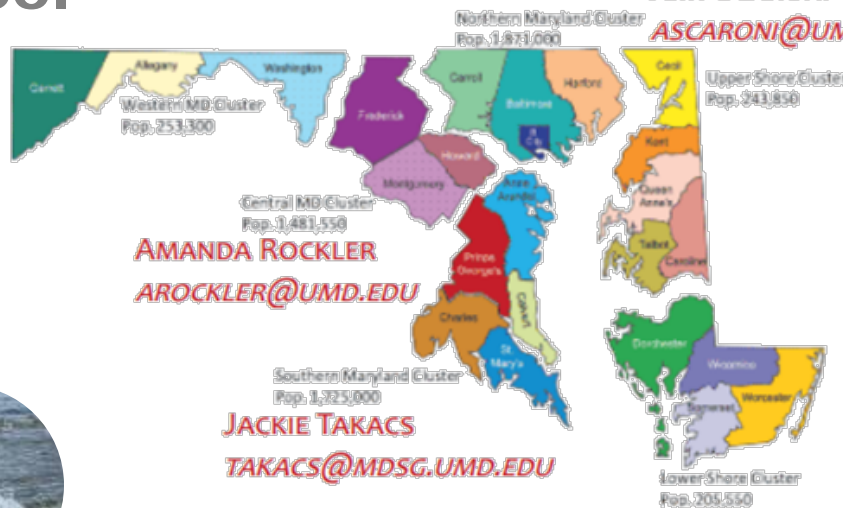
**KRISZTIAN VARSA**  
[KVARSA@UMD.EDU](mailto:KVARSA@UMD.EDU)

**AMY SCARONI**  
[ASCARONI@UMD.EDU](mailto:ASCARONI@UMD.EDU)

**AMANDA ROCKLER**  
[AROCKLER@UMD.EDU](mailto:AROCKLER@UMD.EDU)

**JACKIE TAKACS**  
[TAKACS@MDSG.UMD.EDU](mailto:TAKACS@MDSG.UMD.EDU)

**JEN DINDINGER**  
[JDINDING@UMD.EDU](mailto:JDINDING@UMD.EDU)



# DNR Coastal Training Program

- Training Courses
  - Professional Development and Skills Training
  - Managing the Effects of Development along the Shoreline
  - Watershed Management & Sustainability
  - Coastal Flooding, Sea Level Rise, & Climate Change



Coastal  
Training  
Program

Chesapeake Bay - MD

National Estuarine Research Reserve

## Chesapeake Bay Trust (CBT)

- Grants
  - Watershed Assistance Grant Program (WAGP)
  - Green Streets, Green Jobs Green Towns (G3)
  - Managing the Effects of Development along the Shoreline
  - Non-Tidal Wetlands



# Environmental Finance Center (EFC)

- Community Stormwater Programs
  - Anne Arundel County, Baltimore, Berlin, Bowie, Calvert County, Ocean City, Oxford, Salisbury
- Local Government Stormwater Financing Manual
- Sustainable Maryland Certified



# Impact Report (FY13)

**\$1.8M**

Dollars leveraged through the Watershed Assistance Collaborative dedicated to local assistance in partnership with CBT, UMD, NOAA, and EPA

**\$1M+**

Grant dollars awarded through the Watershed Assistance Grant Program

**41**

Communities assisted in the planning, design, and engineering of shovel-ready bay restoration projects

**100+**

Acres planned for forested buffer plantings on the Eastern Shore and in Southern Maryland as identified by the Watershed Restoration Specialists

**7**

New stormwater financing programs in development for Maryland communities

